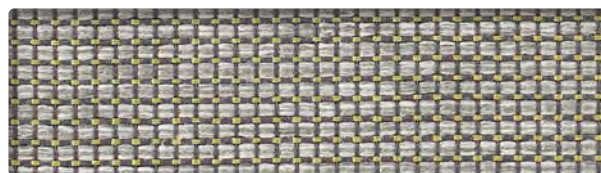


**PEEL**  
TA6658



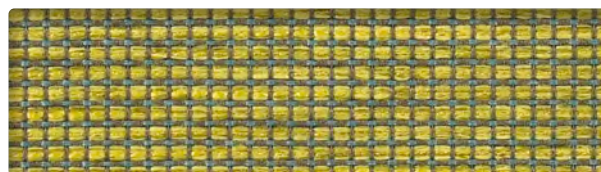
**BARLEY**  
TA6757



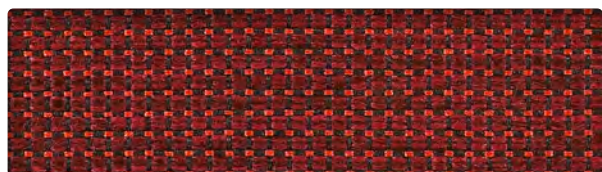
**QUARTZ**  
TA6680



**FLARE**  
TA6647



**LIMEADE**  
TA6724



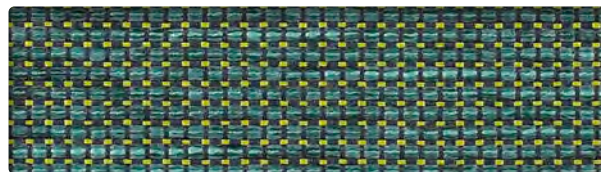
**RUBY**  
TA6636



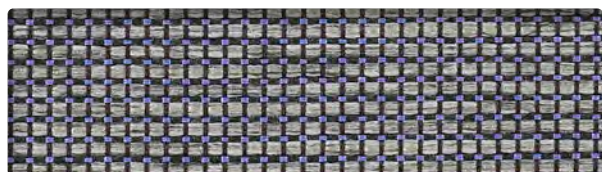
**BAMBINO**  
TA6603



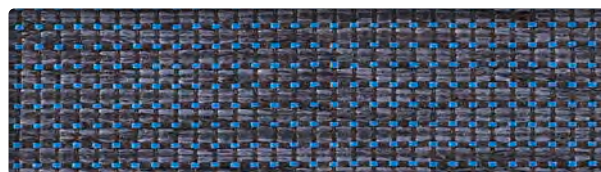
**POUR**  
TA6592



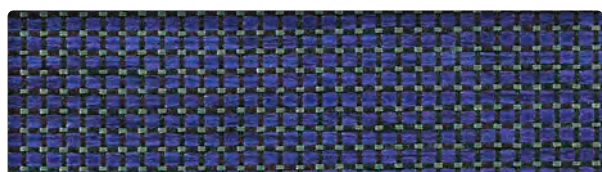
**CREST**  
TA6746



**FORTRESS**  
TA6713



**PACIFIC**  
TA6614




**ROYAL**  
TA6625



**CARBON**  
TA6702

## INFORMATION TECHNIQUE


Patron - Largeur	Composition	Finis	Abrasion (D.F.)	Résistance à la lumière	Code de nettoyage
<b>TACK- 55"</b> 	57 % polyester recyclé Repreve®, 43 % polyester Endos en acrylique	-	55 000	40 Heures Classe 5	WS

### CODE DE NETTOYAGE

- **WS:** Utiliser un agent nettoyant à base d'eau ou de mousse ou un solvant pur et sans eau.

Plusieurs facteurs tels que le type d'utilisation et l'entretien peuvent influencer la durabilité et l'apparence originale. Les résultats Wyzenbeek dépassant 100 000 doubles frottements n'ont pas démontré être un gage de longévité accrue du produit.

## TECHNICAL INFORMATION

Width - Pattern	Content	Finish	Abrasion (D.F.)	Lightfastness	Cleaning Code
<b>TACK- 55"</b> 	57 % Repreve® Recycled Polyester, 43 % polyester Acrylic Backing	-	55,000	40 Hours Class 5	WS

### CLEANING CODE

- **WS:** Use water-based or foam cleaning agent, or pure water-free solvent.

Multiple factors affect fabric durability and appearance retention, including end-user application and proper maintenance. Wyzenbeek results above 100,000 double rubs have not been shown to be an indicator of increased lifespan.



10871, avenue Salk  
Montréal-Nord  
(Québec) Canada  
H1G 6M7

[bouty.com](http://bouty.com)

Échantillons disponibles via  
Memo samples are available from

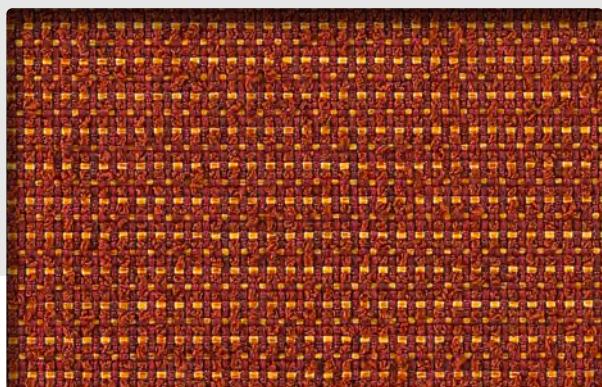
**MOMENTUM**  
T E X T I L E S

[memosamples.com](http://memosamples.com) | 800.366.6839



3450, 1re Rue  
Saint-Hubert  
(Québec) Canada  
J3Y 8Y5

[adi-artdesign.com](http://adi-artdesign.com)



**AMBER**  
PI6867



**ZEST**  
PI7054



**PEWTER**  
PI7032



**GRANADINE**  
PI6911



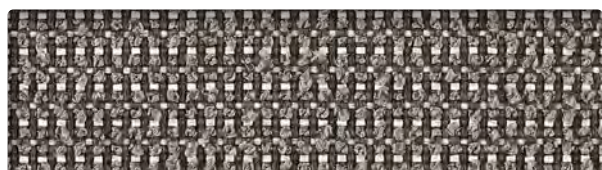
**MALACHITE**  
PI6988



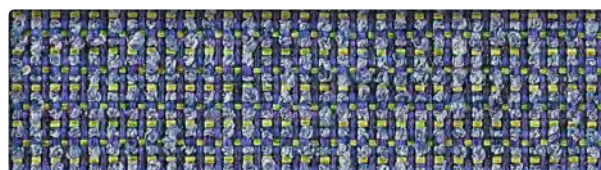
**CRIMSON**  
PI6878



**CALYPSO**  
PI6955



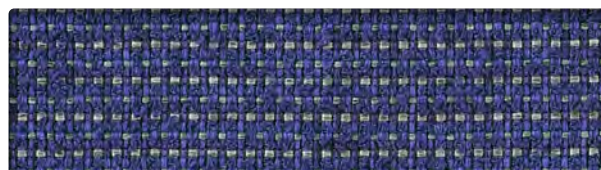
**RUNE**  
PI7010



**LAKE**  
PI6933



**DUSK**  
PI6966



**YACHT**  
PI6944




**TURRET**  
PI7021



**PEPPER**  
PI6999

## INFORMATION TECHNIQUE


Patron - Largeur	Composition	Finis	Abrasion (D.F.)	Résistance à la lumière	Code de nettoyage
PIP - 55" 	53 % polyester recyclé Repreve®, 47 % polyester Endos en acrylique	-	200 000	40 Heures Classe 4,5	WS

### CODE DE NETTOYAGE

- **WS:** Utiliser un agent nettoyant à base d'eau ou de mousse ou un solvant pur et sans eau.

Plusieurs facteurs tels que le type d'utilisation et l'entretien peuvent influencer la durabilité et l'apparence originale. Les résultats Wyzenbeek dépassant 100 000 doubles frottements n'ont pas démontré être un gage de longévité accrue du produit.

## TECHNICAL INFORMATION

Width - Pattern	Content	Finish	Abrasion (D.F.)	Lightfastness	Cleaning Code
PIP - 55" 	53 % Repreve® Recycled Polyester, 47 % polyester Acrylic Backing	-	200,000	40 Hours Class 4,5	WS

### CLEANING CODE

- **WS:** Use water-based or foam cleaning agent, or pure water-free solvent.

Multiple factors affect fabric durability and appearance retention, including end-user application and proper maintenance. Wyzenbeek results above 100,000 double rubs have not been shown to be an indicator of increased lifespan.



10871, avenue Salk  
Montréal-Nord  
(Québec) Canada  
H1G 6M7

[bouty.com](http://bouty.com)

Échantillons disponibles via  
Memo samples are available from

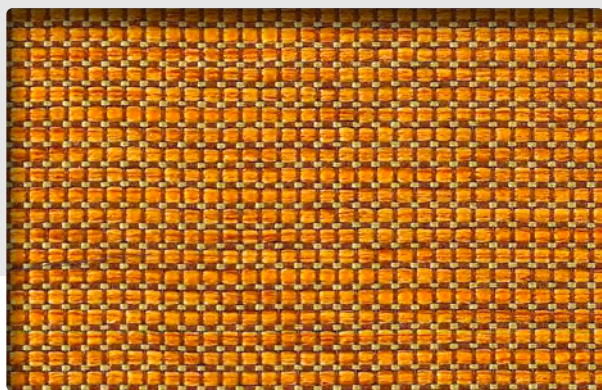
**MOMENTUM**  
T E X T I L E S

[memosamples.com](http://memosamples.com) | 800.366.6839



3450, 1re Rue  
Saint-Hubert  
(Québec) Canada  
J3Y 8Y5

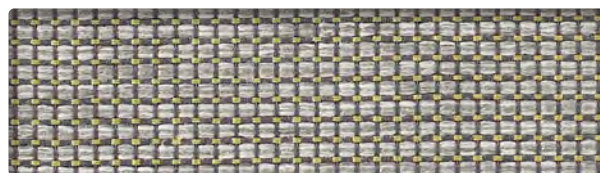
[adi-artdesign.com](http://adi-artdesign.com)



**PEEL**  
TA6658



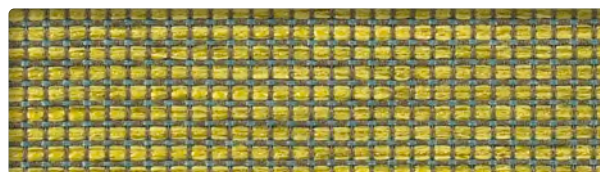
**BARLEY**  
TA6757



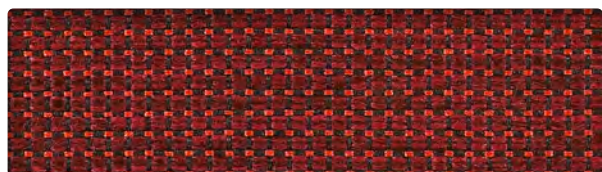
**QUARTZ**  
TA6680



**FLARE**  
TA6647



**LIMEADE**  
TA6724



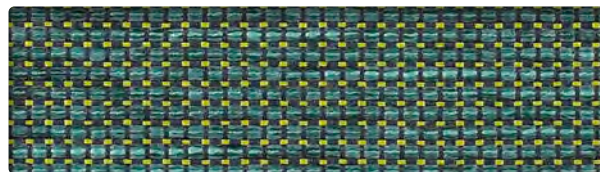
**RUBY**  
TA6636



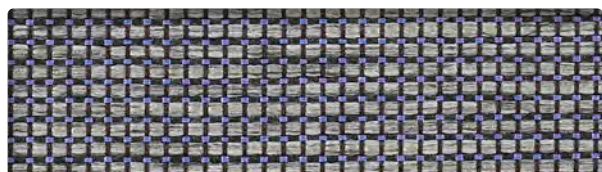
**BAMBINO**  
TA6603



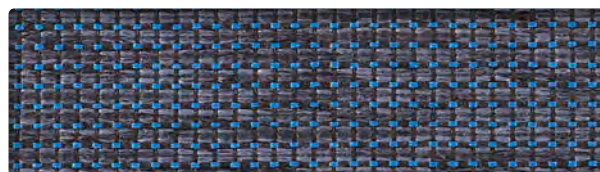
**POUR**  
TA6592



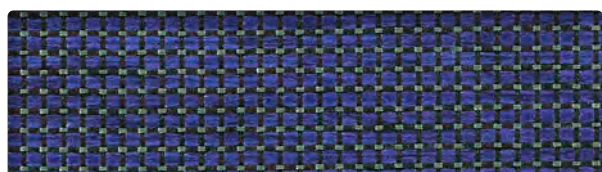
**CREST**  
TA6746



**FORTRESS**  
TA6713



**PACIFIC**  
TA6614




**ROYAL**  
TA6625



**CARBON**  
TA6702

## INFORMATION TECHNIQUE


Patron - Largeur	Composition	Finis	Abrasion (D.F.)	Résistance à la lumière	Code de nettoyage
<b>TACK- 55"</b> 	57 % polyester recyclé Repreve®, 43 % polyester Endos en acrylique	-	55 000	40 Heures Classe 5	WS

### CODE DE NETTOYAGE

- **WS:** Utiliser un agent nettoyant à base d'eau ou de mousse ou un solvant pur et sans eau.

Plusieurs facteurs tels que le type d'utilisation et l'entretien peuvent influencer la durabilité et l'apparence originale. Les résultats Wyzenbeek dépassant 100 000 doubles frottements n'ont pas démontré être un gage de longévité accrue du produit.

## TECHNICAL INFORMATION

Width - Pattern	Content	Finish	Abrasion (D.F.)	Lightfastness	Cleaning Code
<b>TACK- 55"</b> 	57 % Repreve® Recycled Polyester, 43 % polyester Acrylic Backing	-	55,000	40 Hours Class 5	WS

### CLEANING CODE

- **WS:** Use water-based or foam cleaning agent, or pure water-free solvent.

Multiple factors affect fabric durability and appearance retention, including end-user application and proper maintenance. Wyzenbeek results above 100,000 double rubs have not been shown to be an indicator of increased lifespan.



10871, avenue Salk  
Montréal-Nord  
(Québec) Canada  
H1G 6M7

[bouty.com](http://bouty.com)

Échantillons disponibles via  
Memo samples are available from

**MOMENTUM**  
T E X T I L E S

[memosamples.com](http://memosamples.com) | 800.366.6839



3450, 1re Rue  
Saint-Hubert  
(Québec) Canada  
J3Y 8Y5

[adi-artdesign.com](http://adi-artdesign.com)