

FUN PHILATELICALY

NEWSLETTER

ISSN 1171-6029

December 2008

Produced by the PHILATELIC YOUTH COUNCIL OF N.Z. (Inc.)
PO Box 2979, Auckland
www.nzpf.org.nz/youth/youth.html

With funding from



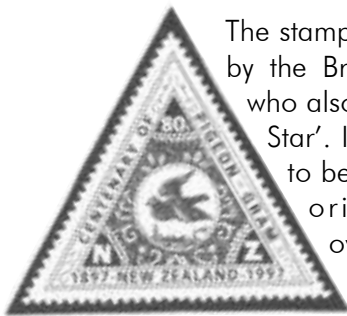
Great Barrier Island Pigeon Post

Part Two

Mr Fricker's Great Barrier Pigeongram Agency continued to operate at the same time as Mr Parkin's and time had done nothing to modify the bitter rivalry between the two pigeongram concerns. By 1899 it had greatly intensified. Mr Parkin had cut the rate for messages; Mr Fricker decided to do the same. Messages to the Great Barrier at 1/-, and those from Great Barrier at sixpence, half of Mr Parkin's service fee.

Mr Fricker had stamps prepared, 6d blue for the messages from the island and 1/- red for messages going the other way. The notable artist H Wrigg designed the stamps. He was a Land War veteran, and one of twenty three winners of the New Zealand Cross, which he won for gallantry while carrying dispatches.

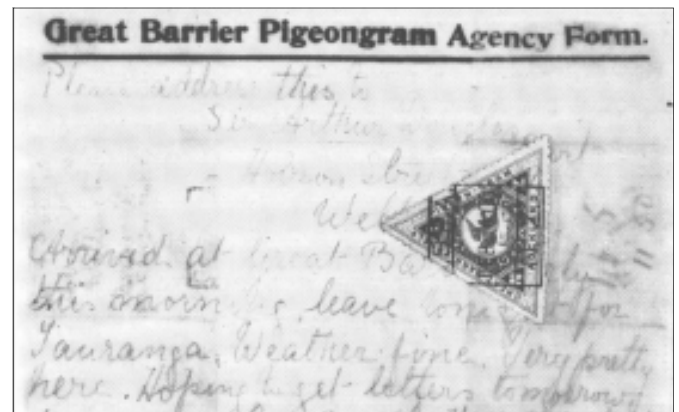
It has been said that the Rt.Hon. Richard Seddon had suggested the stamps' triangle format. (He was a prominent politician at the time).



The stamps were lithograph printed by the Brett Publishing Company, who also published the 'Auckland Star'. Instructions that they were to be two-thirds the size of the original design was overlooked, and as a consequence they were printed the same size.

The stamps were put on sale at Champtaloo and Cooper, booksellers in Queens Street, and at the Barrier on July 11th 1899.

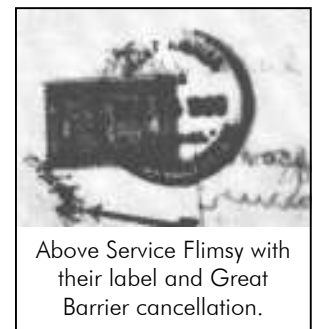
The early messages were written on plain Japanese tissue paper, which was not much larger than the message. This was particularly suited for open air contact, although extremely fragile.



Both the Agency operation and the Service operation continued their rivalry and had flimsies printed. (Flimsies are what the pigeongrams are now called). The Service had pictures of their two fastest and most famous birds, 'Te Uira' and 'Velocity'.



After 1904, the population of the Great Barrier Island dwindled considerable because of mines closing down. The Postmaster General's annual report for 1908 said that 'on 26th September 1908, a cable was successfully laid from Tryphena to the mainland. There was therefore, no longer any need for a pigeon post, and consequently this historic and unique undertaking ended'.



Above Service Flimsy with their label and Great Barrier cancellation.

Editor thanks Mr L Jury for assistance with this article.

The 150th Anniversary of the First Christmas In New Zealand

The 1964 Christmas Stamp celebrates the 150th anniversary of the first Christmas service held in New Zealand.

The Rev. Samuel Marsden was the 'founding father' of the Missionary Service in New Zealand. Through his enthusiasm the British Church Missionary Society settlements were established in Northland.

The first settlement was set up in the Bay of Islands in 1814 by the Rev. Samuel Marsden, who was a senior chaplain to the convicts of New South Wales. Marsden arrived from Australia on the 'Active' a few days before Christmas and made friends with the local Maori Chiefs. One of these, Ruatara, had prepared for a service in an enclosed area of about half an acre.

At 10 o'clock on Christmas morning Marsden left the 'Active' with the entire ship's company.

When the Europeans had occupied the enclosure, the three Maori chiefs marched in with their warriors behind them, and formed a circle behind the Europeans.

Marsden preached from the text 'Behold I bring you glad tidings of great joy'



Hidden Message

Can you decipher this coded message?
Use the grid to help you.

19 12 1 1 10 *
14 19 3 20 4 5 24 12 4 *
17 3 26 24 *
17 6 25 * 1 19 20 23 12 5 16 23 10

A	B	C	D	E	F	G	H	I	J	K	L	M
12	13	14	15	16	17	18	19	20	21	22	23	24
N	O	P	Q	R	S	T	U	V	W	X	Y	Z
25	26	1	2	3	4	5	6	7	8	9	10	11

Stamp Camp 2009 Advance Notice

Stamp camp next year will be held at Blue Skies in Kaiapoi.
Dates are from 8th to 12 July 2009.
More details in our March newsletter.

Right are City of Sails members with Jean Lee, one of the judges with trophies and awards won at the North Shore Annual Exhibition held in October.
Below pupils from Rapapiko School, with their 'design a stamp' entries behind them, visiting Tarapex 2008.



TRUE OR FALSE QUIZ

Test your knowledge of these True or False questions. The answers will be in the March 2009 issue.

- 1 New Zealand issued the world first Charity stamp in 1929
- 2 Australia's first stamps were issued in 1900
- 3 The Penny Black was issued on the same day as the 2d blue
- 4 New Zealand's first stamps issued in 1855 were 1d, 2d, 1/-
- 5 The 1996 teddy bear health stamp error was issued in both sheet and self adhesive roll format
- 6 New Zealand issued stamps in 1997 stamps to commemorate the first pigeon post from Great Barrier Island
- 7 Brazil was the third country in the world to issue postage stamps
- 8 New Zealand's first Christmas stamp was issued in 1960
- 9 Gumboots have never been shown on New Zealand stamps
- 10 The kiwi has featured on more New Zealand stamps than any other bird
- 11 Before stamps were issued, people who received a letter ALWAYS had to pay
- 12 Canada's first Christmas stamps depicted a map of the world
- 13 A watermark was put into stamps to make them more interesting to stamp collectors
- 14 The highest value New Zealand stamp on sale at present is \$10.00
- 15 The 1931 red and blue boy health stamps were originally planned to be issued in 1930

Quiz Winners

The three lucky people, who did the quiz at Tarapex 2008 exhibition and who had their names pulled out of our box have been posted their special gift donated by New Zealand Post.

EXHIBITION PROTECTORS

New shipment now arrived, same quality.

Made from high quality polypropylene (size 248 x 290mm)

Pack of 25 \$15 or Pack of 100 \$50

Order from – PYC of NZ, PO Box 2979, Auckland
Money with your order please. All prices include
GST and postage within New Zealand.

CONGRATULATIONS

There were a great number of entrants who entered Tarapex 2008.

Congratulations to all of you for your fabulous efforts.

Youth Development Class

Felicity Andrews	Emerald
Jenna Bellve	Emerald
Kacy Bellve	Emerald
Louisa Breslin	Emerald
Leaf Burrows	Sapphire
Keran Liddington	Emerald
Brydon Sundgren	Ruby
Charyne Sundgren	Sapphire
Melissa Were	Emerald

National Class

Isabella Beach	Silver/Bronze
Tait Beekmans	Vermeil
Michael Davis	Vermeil
Timothy Kemp	Large Silver
Jurgen Speyer	Large Vermeil



Above we have visitors to Tarapex 2008 taking part in the quiz. Below as usual plenty of activity at our suitcase full of stamps for young collectors to choose from.



NEW ZEALAND A-Z WORD PUZZLE



Can you find the New Zealand icon word which follows

Is for ?



I	R	N	E	A	X	U	P	H	A	M	D
W	E	Y	B	E	T	O	V	Y	A	R	N
I	D	A	A	E	R	W	E	P	D	K	F
K	N	P	O	R	E	T	U	R	B	S	A
T	A	I	D	T	M	H	E	L	E	L	N
H	L	T	A	O	E	O	I	N	G	O	T
G	S	Y	A	D	S	A	V	V	I	O	A
I	I	L	R	O	P	I	R	O	E	P	I
N	R	L	O	G	O	F	W	O	O	D	L
D	E	E	A	I	R	A	E	K	A	U	Q
O	T	J	I	N	T	S	D	N	O	M	E
O	N	A	K	A	S	M	V	R	D	O	D
G	I	Z	E	E	L	A	N	D	M	M	C
A	E	M	Q	P	S	D	N	O	M	D	E



Aotearoa
Beehive
Cook
Dog
Edmonds
Fantail
Goodnight Kiwi

Haka
Interislander
Jellytip
Kiaora
Mudpools
Pinetree
Quake

Log of Wood
Upham
Vote
Weta
Xtremesports
Yarn
Zealand

