

**Rabbit Anti-Spectrin [EP251]: RM0302, RM0302RTU7**

**Intended Use:** For Research Use Only

**Description:** Spectrin alpha chain, erythrocytic 1 (SPTA1) is a member of the family of alpha-spectrin proteins. It is primarily composed of 22 spectrin repeats which are involved in dimer formation. Spectrin antibodies react with erythroid cells at all stages of maturation in the bone marrow. Spectrin is a useful target in identification of erythroid leukemias. It may be a superior marker to glycophorin for the identification of erythroid precursors in paraffin embedded sections.

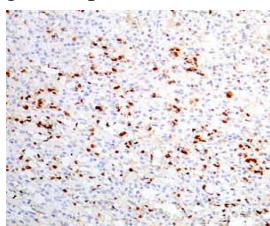
**Specifications**

|               |  |
|---------------|--|
| Clone:        | EP251  |
| Source:       | Rabbit   |
| Isotype:      | IgG  |
| Reactivity:   | Human  |
| Localization: | Cytoplasm, membrane  |
| Formulation:  | Antibody in PBS pH7.4, containing BSA and $\leq 0.09\%$ sodium azide (NaN <sub>3</sub> ) |
| Storage:      | Store at 2°- 8°C   |
| Applications: | IHC  |
| Package:      |  |

| Description           | Catalog No. | Size |
|-----------------------|-------------|------|
| Spectrin Concentrated | RM0302      | 1 ml |
| Spectrin Prediluted   | RM0302RTU7  | 7 ml |

**IHC Procedure**

|  |   |
|--|---|
| Positive Control Tissue:   | Erythroid cells, leukemia   |
| Concentrated Dilution:   | 50-200  |
| Pretreatment:  | EDTA pH8.0, 15 minutes using Pressure Cooker, or 30-60 minutes using water bath at 95°-99°C |
| Incubation Time and Temp:  | 30-60 minutes @ RT  |
| Detection:   | Refer to the detection system manual  |
| * Result should be confirmed by an established diagnostic procedure. |   |



FFPE human spleen stained with anti-Spectrin using DAB

**References:**

1.  $\beta$ -III-spectrin immunohistochemistry as a potential diagnostic tool with high sensitivity for malignant peripheral nerve sheath tumors. Hirbe AC et al. Neuro Oncol. 2018.
2. Novel variants in SPTAN1 without epilepsy: An expansion of the phenotype. Gartner V et al. Am J Med Genet A. 2018.
3. Reactive protoplasmic and fibrous astrocytes contain high levels of calpain-cleaved alpha 2 spectrin. Kim JH, et al. Exp Mol Pathol. 2016.