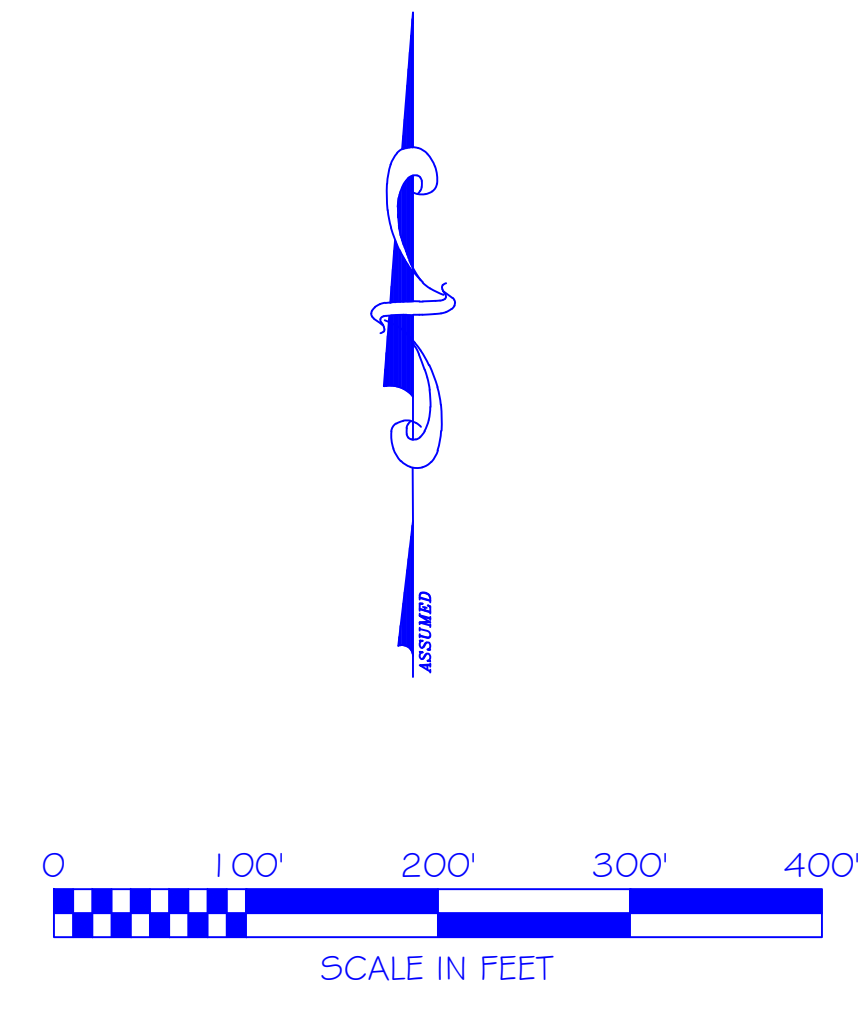
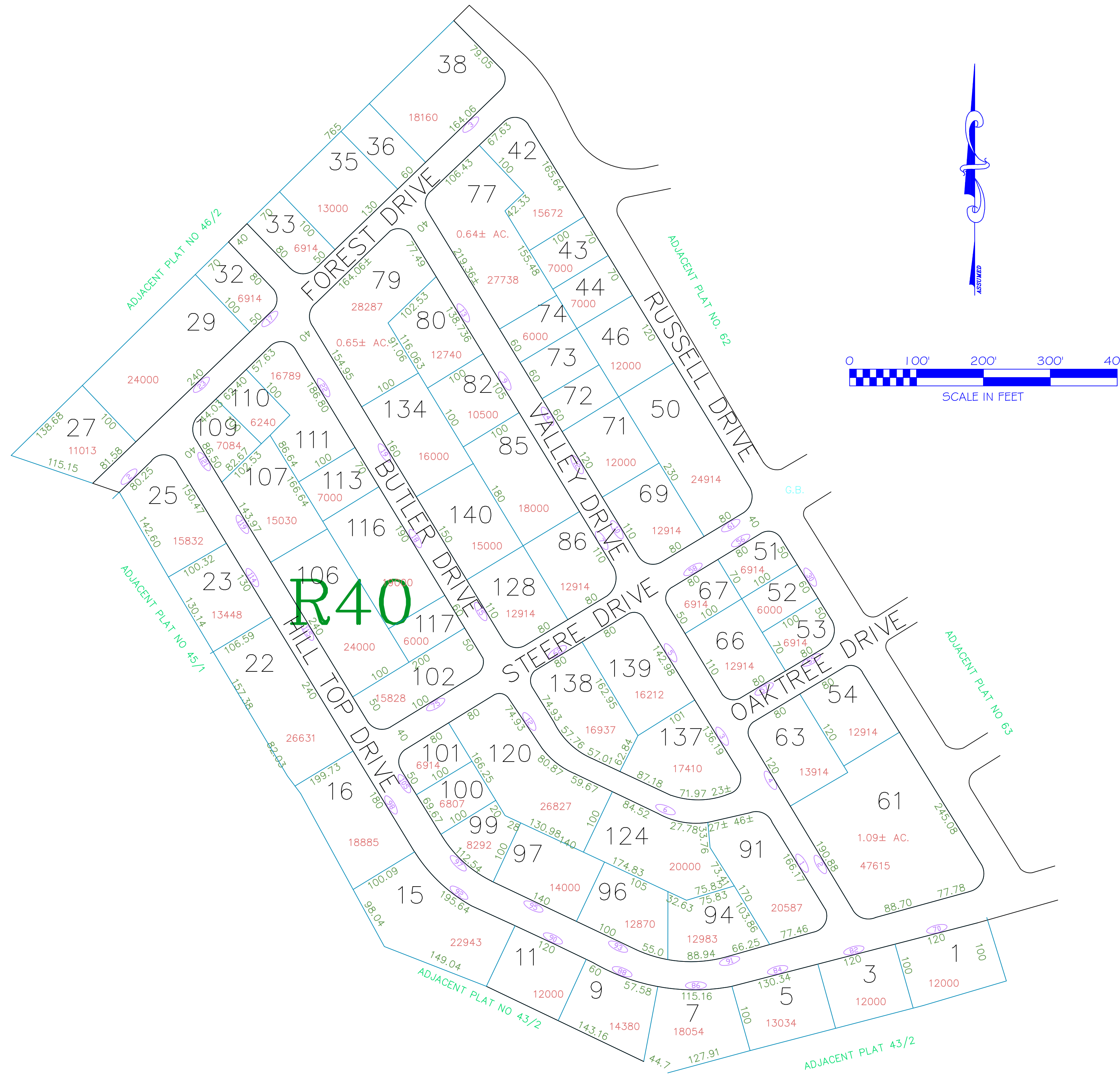


# ASSESSOR'S MAP

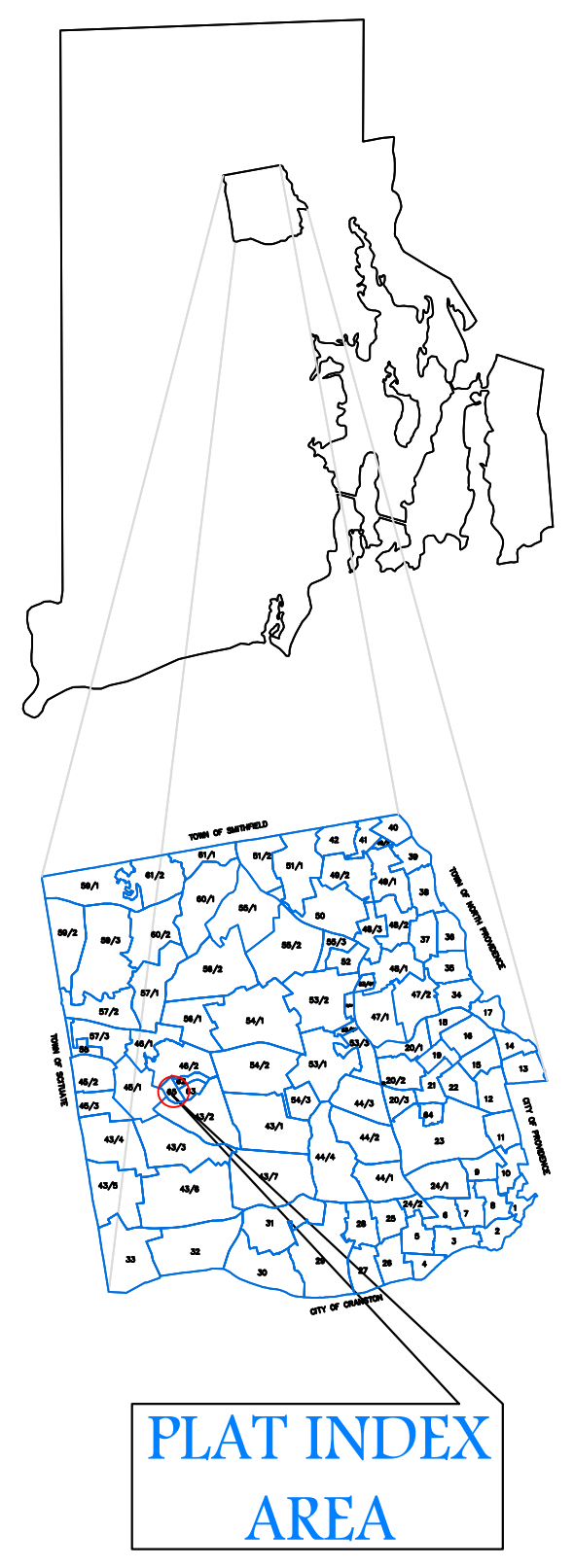
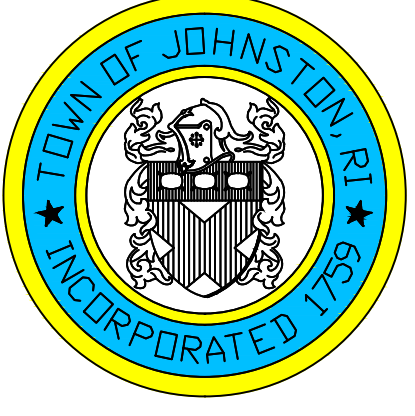
SHOWING ZONING DISTRICTS



Assessor's Plat Number

# 65

STATE OF RHODE ISLAND  
 TOWN OF JOHNSTON  
 PROVIDENCE COUNTY  
 INCORPORATED 1759  
 ASSESSOR'S OFFICE  
 1385 HARTFORD AVENUE  
 JOHNSTON, RHODE ISLAND  
 02919



Scale: 1:100  
 Revised By: Benjamin Ng  
 Last updated: January 05, 2015  
 Date printed: January 04, 2016

AMENDMENTS					
LOT(S)	FROM	TO	ORDIN. #	DATE	NOTE

For copies of plat maps, please go to the DPW at 100 Irons Avenue Johnston Rhode Island. Thank you.  
 NOTE: This map was prepared for the use of the Town of Johnston for assessment and illustrative purposes only. It does not represent a survey of the premises. No liability is assumed as to the sufficiency or accuracy of the data delineated hereon.