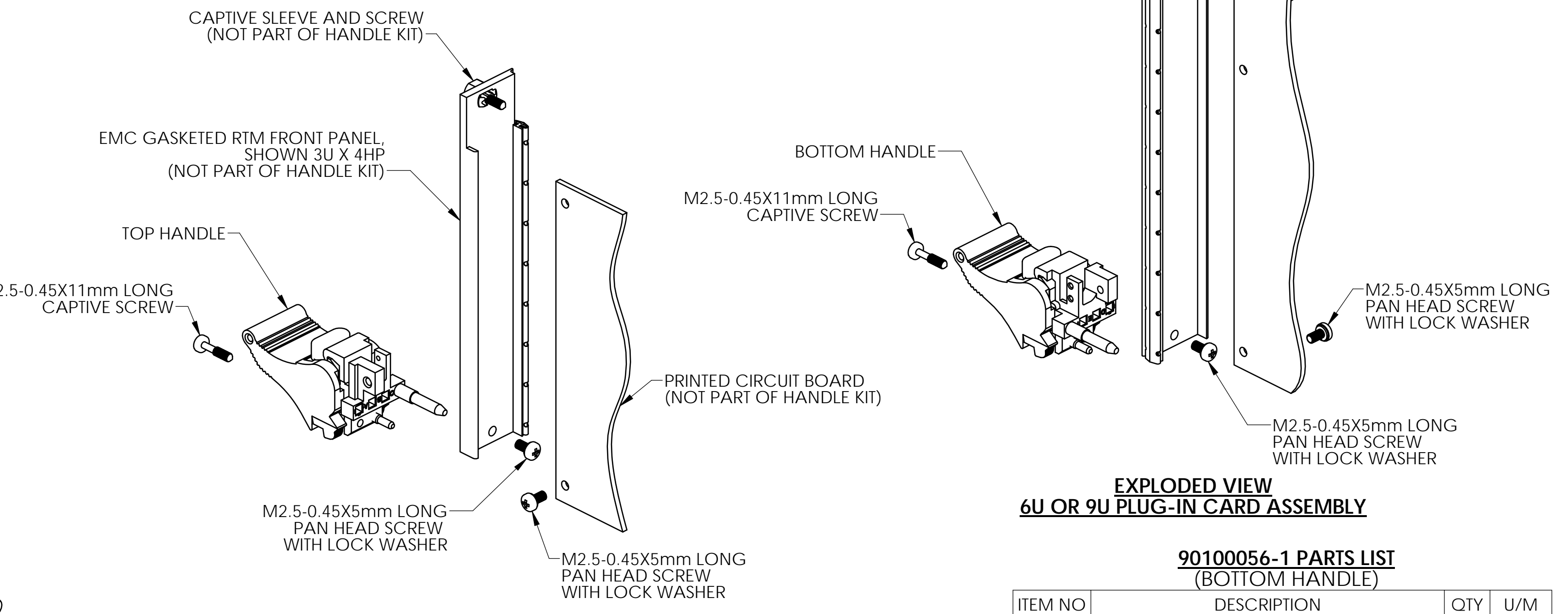
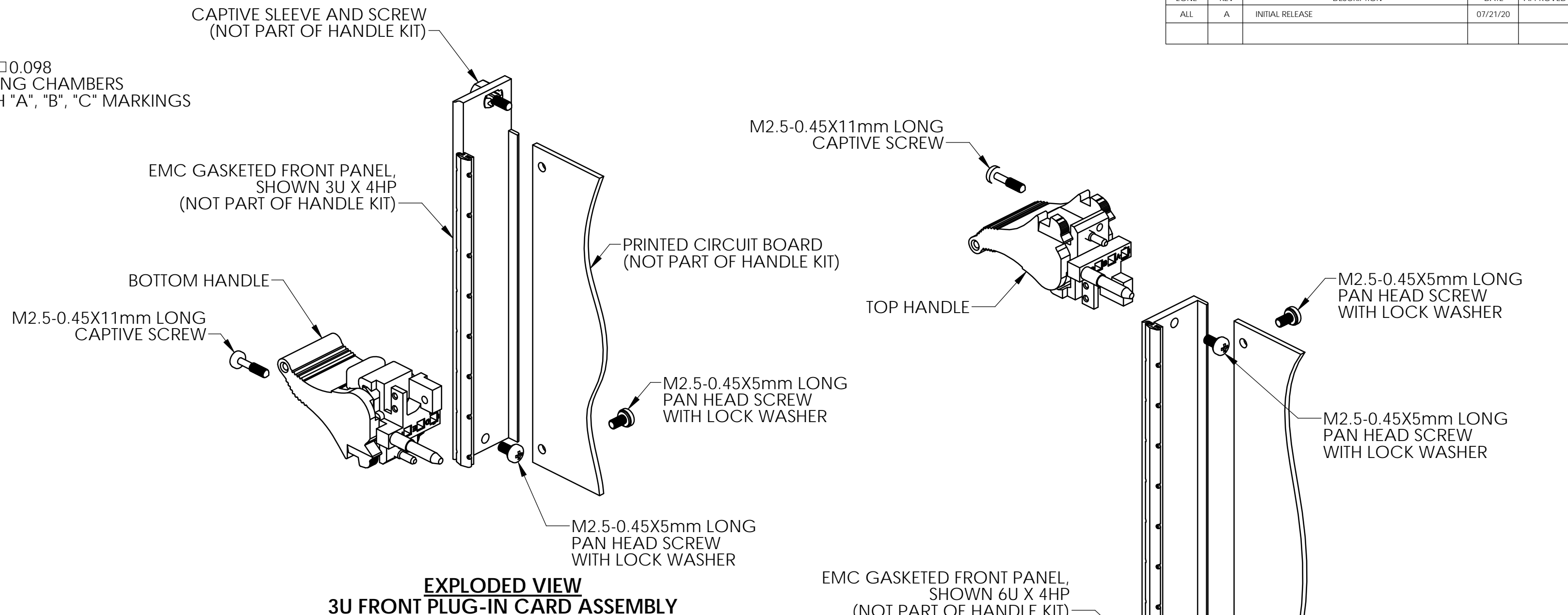
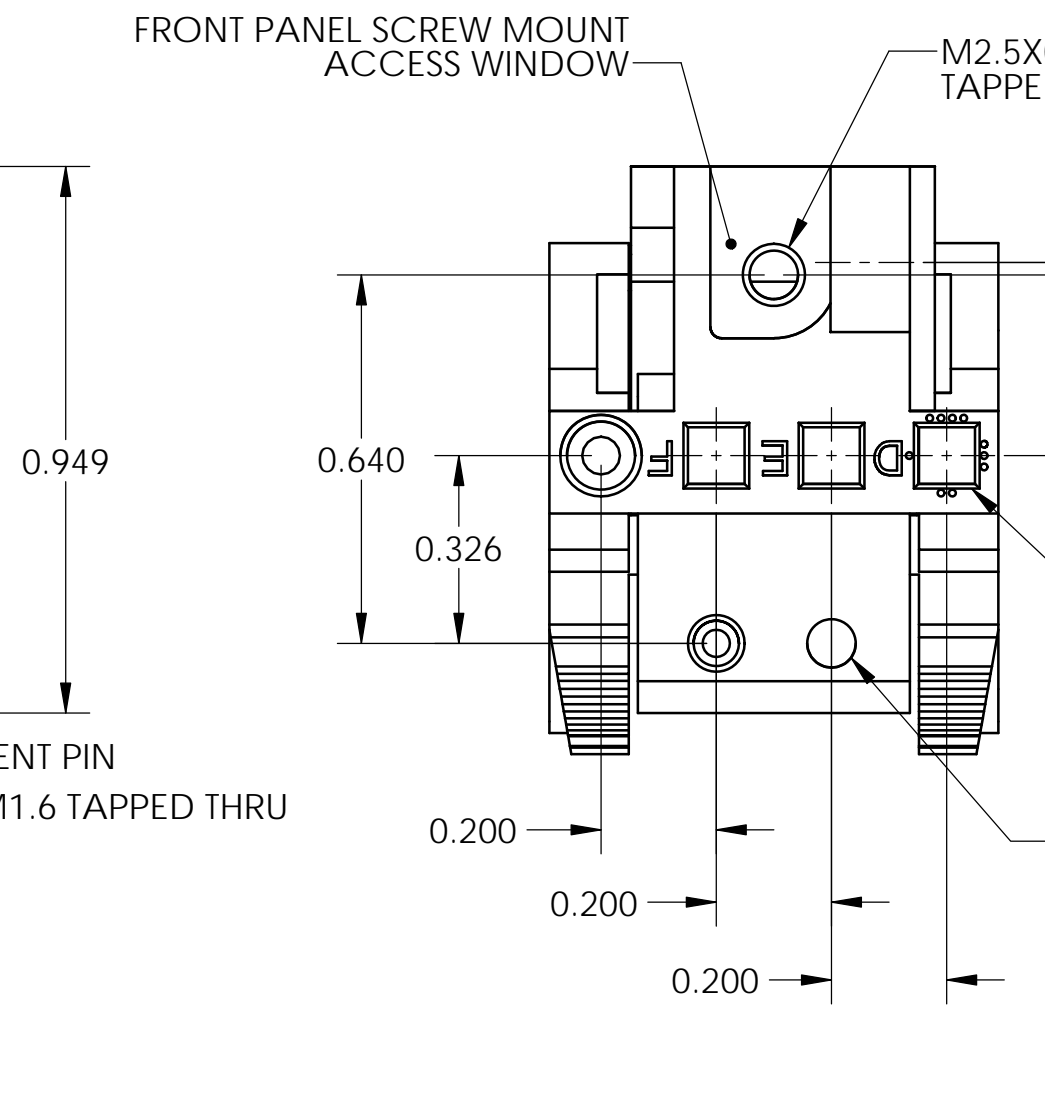
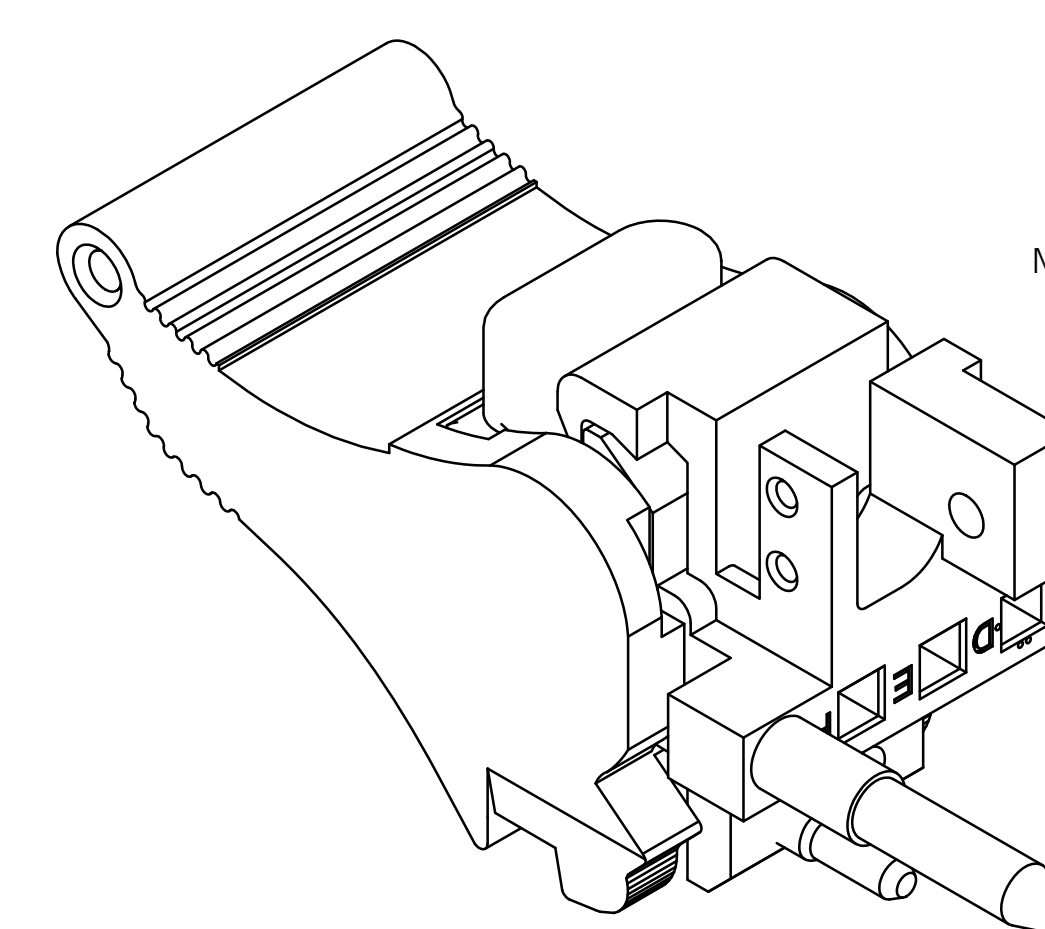
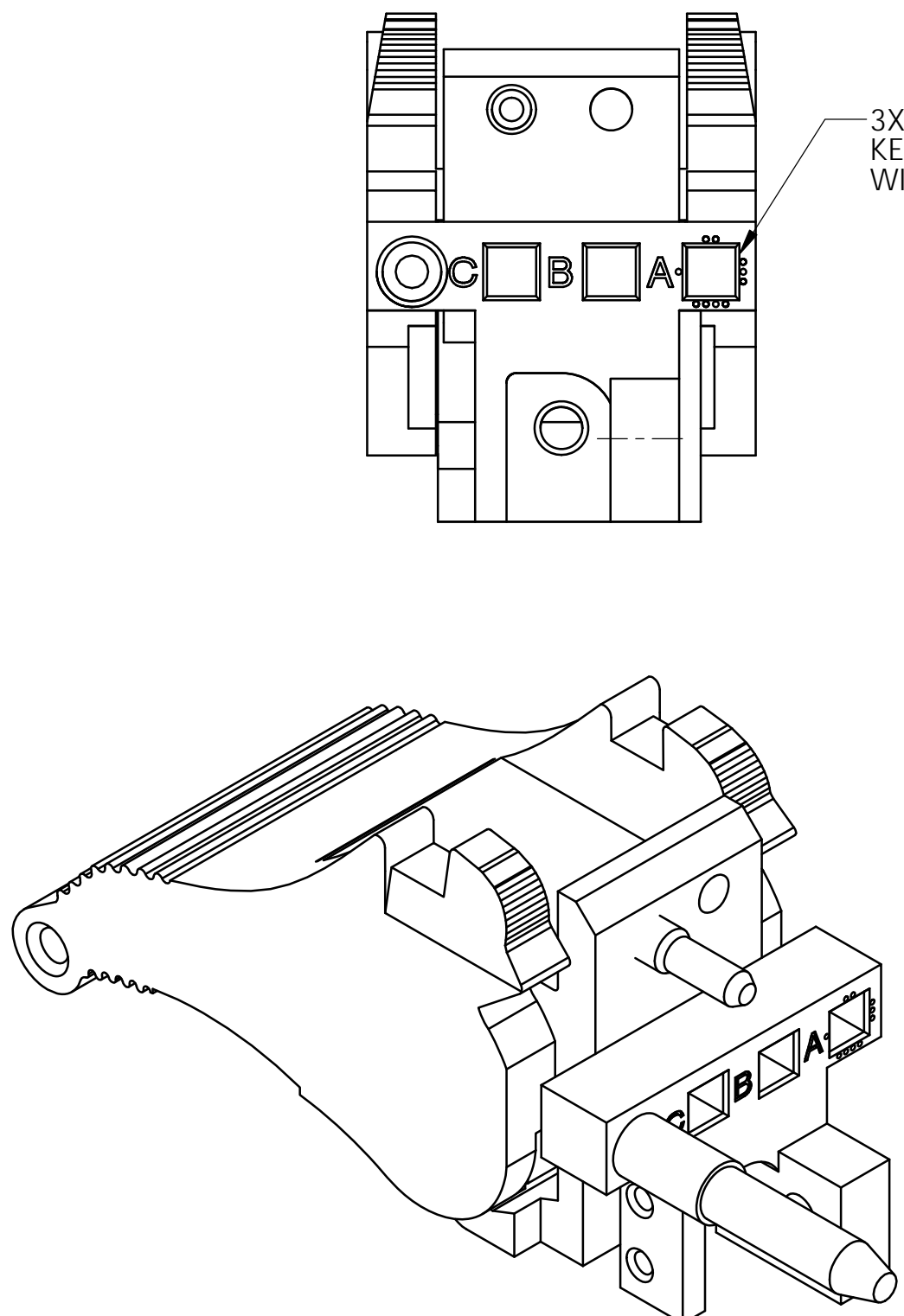
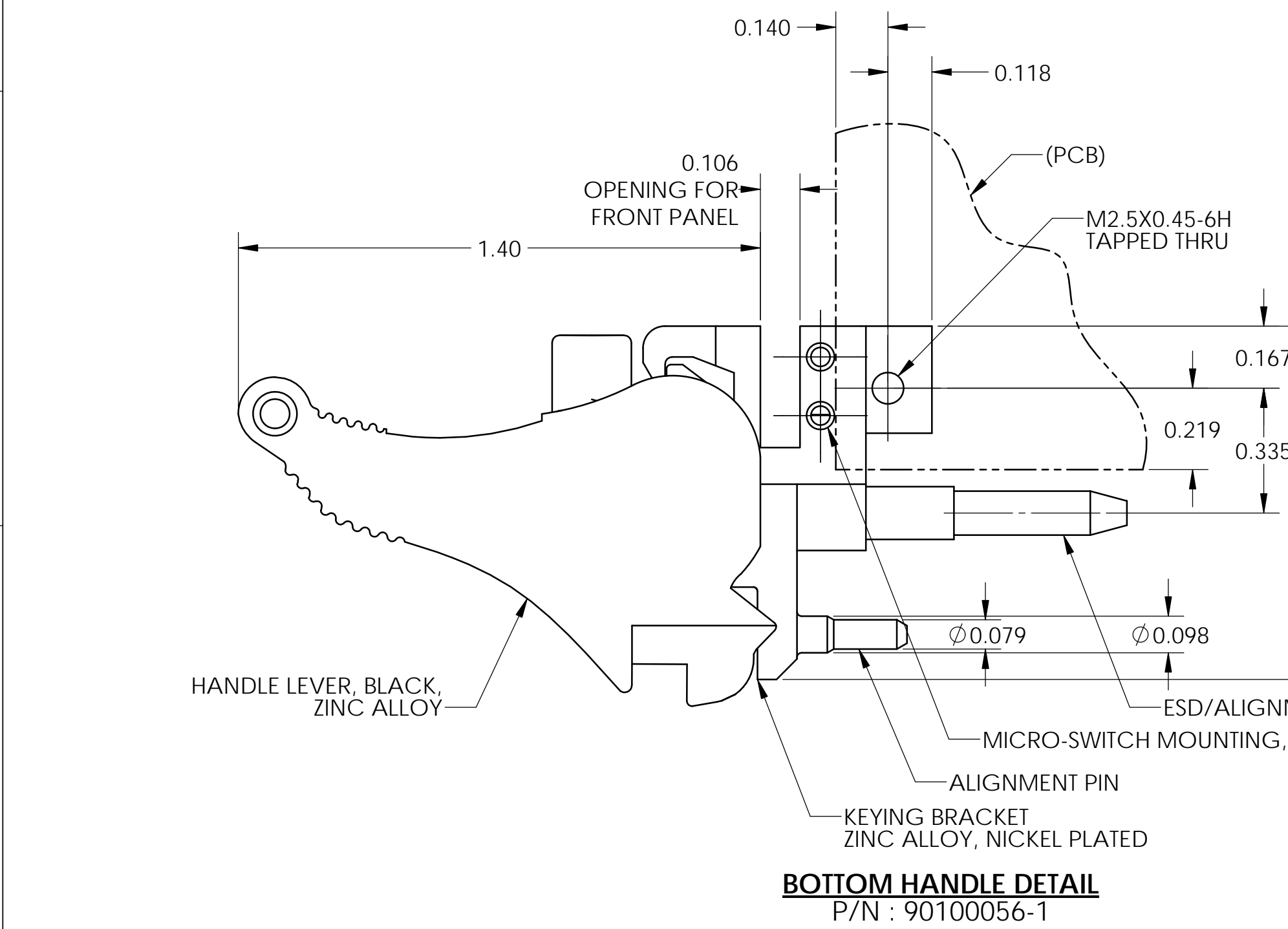
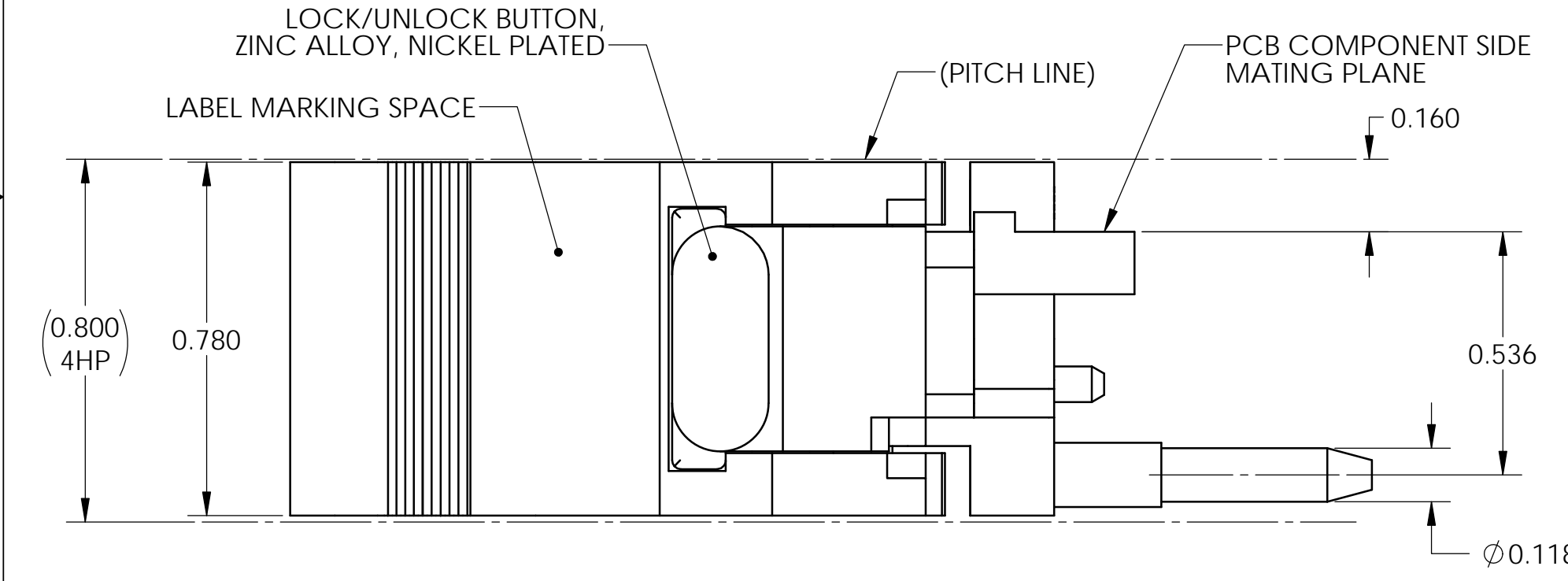
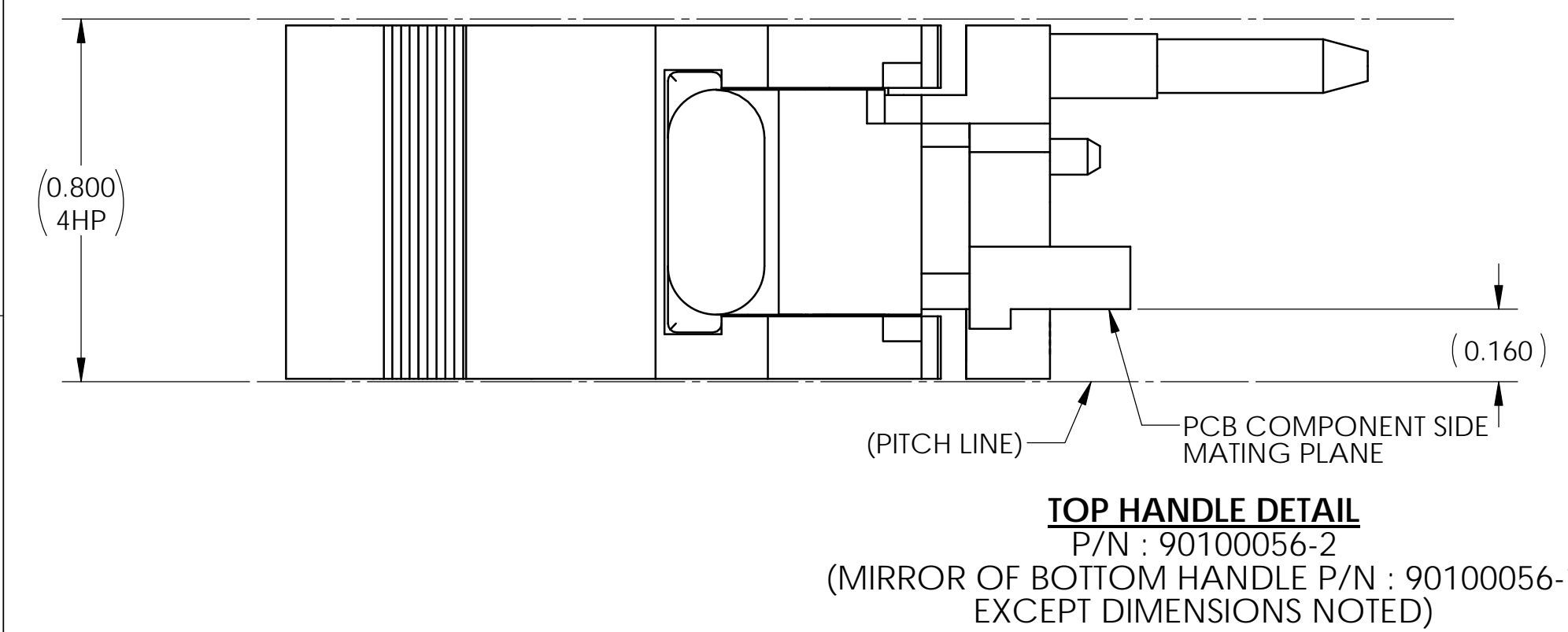
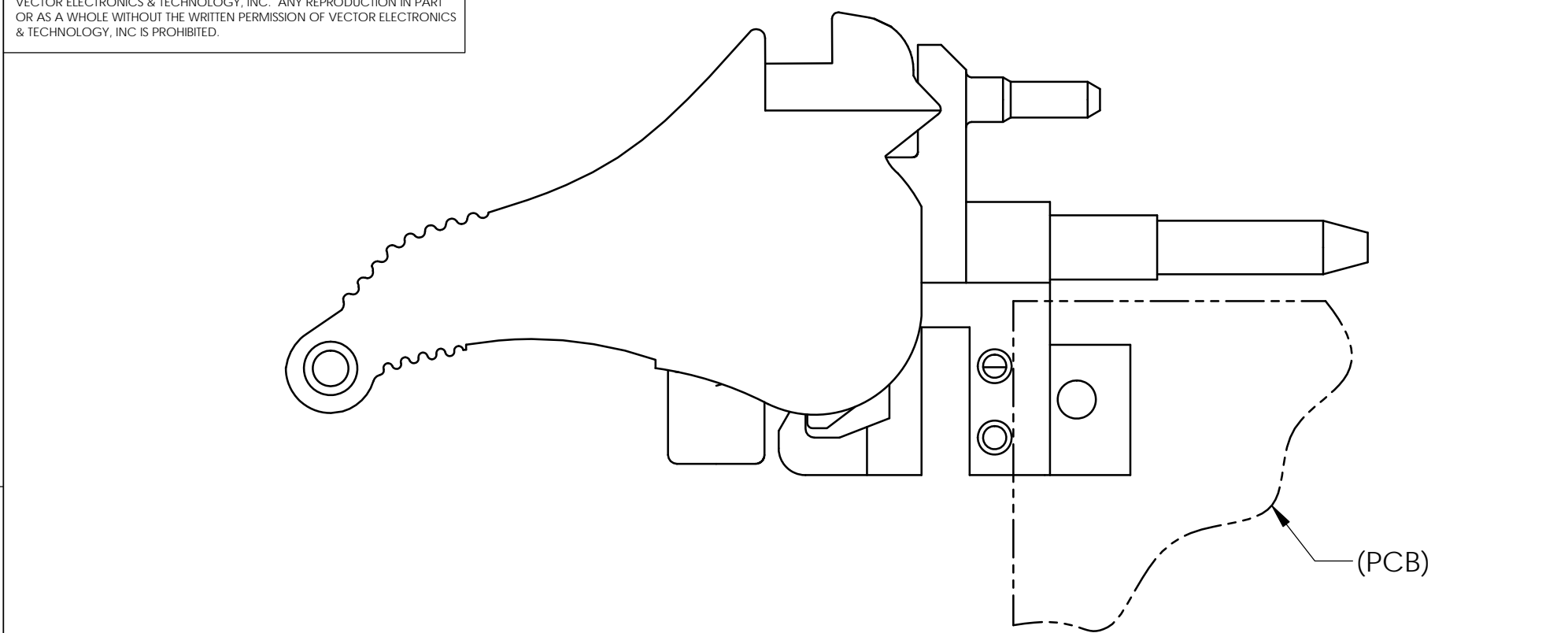


PROPRIETARY AND CONFIDENTIAL
 THE INFORMATION CONTAINED IN THIS DRAWING IS THE SOLE PROPERTY OF VECTOR ELECTRONICS & TECHNOLOGY, INC. ANY REPRODUCTION IN PART OR AS A WHOLE WITHOUT THE WRITTEN PERMISSION OF VECTOR ELECTRONICS & TECHNOLOGY, INC. IS PROHIBITED.

REVISIONS				
ZONE	REV	DESCRIPTION	DATE	APPROVED
ALL	A	INITIAL RELEASE	07/21/20	



90100056-1 PARTS LIST (BOTTOM HANDLE)

ITEM NO	DESCRIPTION	QTY	U/M
1	HANDLE, BOTTOM, TYPE VIII, W/BUTTON	1	EACH
2	SCREW, PAN HEAD, PHILLIPS, M2.5-0.45X5mm, WITH #2 WASHER INSTALLED, WITH THREAD LOCKER ON SCREW	2	EACH
3	SCREW, CAPTIVE, PHILLIPS/SLOT, M2.5-0.45X11mm WITH THREAD LOCKER	1	EACH
4	SCREWS, PAN HEAD, PHILLIPS, M1.6 X 4mm	2	EACH

90100056-2 PARTS LIST (TOP HANDLE)

ITEM NO	DESCRIPTION	QTY	U/M
1	HANDLE, TOP, TYPE VIII, W/BUTTON	1	EACH
2	SCREW, PAN HEAD, PHILLIPS, M2.5-0.45X5mm, WITH #2 WASHER INSTALLED, WITH THREAD LOCKER ON SCREW	2	EACH
3	SCREW, CAPTIVE, PHILLIPS/SLOT, M2.5-0.45X11mm WITH THREAD LOCKER	1	EACH
4	SCREWS, PAN HEAD, PHILLIPS, M1.6 X 4mm	2	EACH

90100056 PARTS LIST (TOP, BOTTOM HANDLE)

ITEM NO	DESCRIPTION	PART NO	QTY	U/M
1	HANDLE, BOTTOM, TYPE VIII, W/BUTTON	90100056-1	1	EACH
2	HANDLE, TOP, TYPE VIII, W/BUTTON	90100056-2	1	EACH

UNLESS OTHERWISE SPECIFIED:
 DIMENSIONS ARE IN INCHES
 TOLERANCES:
 DEC. X.X ±0.1
 DEC. X.XX ±0.03
 DEC. X.XXX ±0.010
 FRACTIONS ±0.050
 ANGLES ±1°
 THIRD ANGLE PROJECTION

NAME: TRISHAR
 DATE: 07/21/20

VECTOR
 ELECTRONICS & TECHNOLOGY, INC.
 11115 VANOWEN ST., NORTH HOLLYWOOD, CA 91605

INJECTOR/EJECTOR HANDLE, TYPE VIII WITH BUTTON, 1101.10

MATERIAL: COMMENTS:
 FINISH: COMMENTS:

SCALE: 3:1 CAGE CODE: 82893 SHEET 1 OF 1