

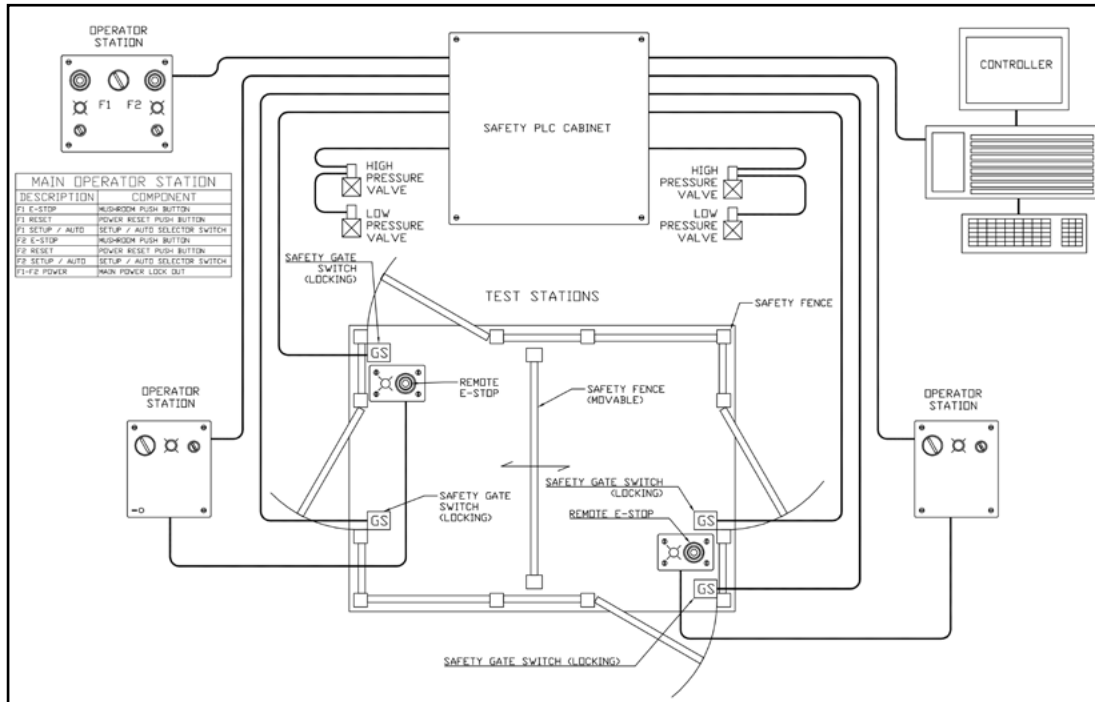


DESIGNER'S EDGE, Inc.

A

The Challenge:

Designer's Edge, Inc. (DEI) assisted an international manufacturer with durability testing labs to upgrade the safety of their operations. The test cells within the labs often perform 1 million actions before reaching product failure. The unique challenge with this installation was the need for engineers to take sample readings of the components while in the middle of a continued operational sequence.



Assessment

Stored energy within the parts could be hazardous to the technician or engineer, even when they had stopped the test to take measurements and readings on the test part. Along with installation of guarding, DEI included a safety-rated controller and the necessary operator interface to allow for safe setup and testing of the components in the cell.

B

Safety Systems Engineering

The completed installation included multiple test cells with one control system. The system features Lock-Out, Gate By-Pass, Reset and Run components.

C

Outcomes

DEI has installed and programmed more than twenty systems throughout the United States for this leading manufacturer.

Raising the machines safety level above state and federal OSHA standards thereby mitigating litigation, fines and settlement risk.

D

