

# POWERS' RATINGS

Volume 3 Issue 14

Week Fourteen Issue

© 2025 BP Sports, LLC

## VIP Plays Go 5-0 on Saturday/Sunday!

### 951-774-34 (55.1%) All-Time 2015-2025!!!

#### Week 13 News and Notes!

For those of you that are new, in this section we'll recap what happened last week specifically, the misleading finals, the key injuries, the bad beats and the line moves. We'll include most of these recaps here, therefore you don't have to waste time reading about them in my game-by-game write-ups for the upcoming week. Without further adieu, here's a run down of what happened last week in the world of CFB.

#### Week 12 Trends

##### Favorites-Dogs

Straight Up

ATS

##### Home-Away

Straight Up

ATS

##### Totals (O/U)

Over-Under

##### Season To-Date

##### Favorites-Dogs

Straight Up

ATS

##### Home-Away

Straight Up

ATS

##### Totals (O/U)

Over-Under

#### Largest Favorites to Cover:

Alabama (-50.5) vs Eastern Illinois, 56-0

Notre Dame (-36.5) vs Syracuse, 70-7

Ohio State (-29) vs Rutgers, 42-9

#### Biggest Money line Upsets:

Tulsa +289 won 26-25 at Army (+10)

Wisconsin +269 won 27-10 vs Illinois (+8.5)

NC State +206 won 21-11 vs Florida State (+6.5)

Nevada +185 won 13-7 at Wyoming (+6)

#### ATS Notables With Cover Margins Per Game:

##### 10-1 ATS teams with cover margin:

Texas Tech 8.6

##### 9-1-1 ATS teams with cover margin:

Ohio State 6.1

##### 9-2 ATS teams with cover margin:

North Texas 9.9

Vanderbilt 9.5

San Diego State 9.2

Utah State 6.3

Western Kentucky 3.6

##### 8-3 ATS teams with cover margin:

Utah 9.4

BYU 8.2

Western Michigan 7.5

Wake Forest 6.5

Pittsburgh 6.2

Toledo 5.5

Memphis 4.3

Central Michigan 3.5

Mississippi State 2.7

##### 1-10 ATS teams with non-cover margin:

Georgia State -8.6

##### 2-9 ATS teams with non-cover margin:

Baylor -6.0

##### 3-8 ATS teams with non-cover margin:

UL-Monroe -9.3

Oregon State -6.9

UCLA -6.6

Sam Houston State -6.4

Virginia Tech -6.1

Louisville -5.8

LSU -5.0

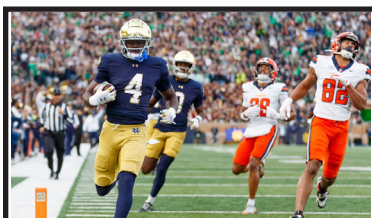
Liberty -4.4

Texas -3.8

Northern Illinois -3.0

Texas State -1.7

UTEP -0.5



No. 9 Notre Dame (-36.5) beat Syracuse 70-7 last Saturday. The Irish led 21-0 before their offense took their first snap. It was the most points in a game for ND since 1932. RB Jeremiah Love was 40/1 to win the Heisman last week. Now he is 4/1 and only behind Fernando Mendoza.

#### Misleading Finals

**Miami, OH (-2.5) beat Buffalo 37-20.** However, Buffalo had a 349-347 yard edge but were -3 in turnovers. The Bulls led 20-17 in the middle of the third quarter.

**NC State (+6.5) upset Florida State 21-11.** However, Florida State had a 383-284 yard edge. The Seminoles were -4 in turnovers and missed two field goals.

**Appalachian State (+3.5) upset Marshall 26-24.** However, Marshall had a 438-276 yard edge. The Thundering Herd were -3 in turnovers.

**BYU (-2.5) beat Cincinnati 26-14.** However, Cincinnati was stopped on downs at the BYU-3 and fumbled at the BYU-17 plus missed three field goals.

**Oklahoma (-4.5) beat Missouri 17-6.** However, Missouri had a 301-276 yard edge. Mizzou was -2 in turnovers, missed a FG and were stopped on downs at the OU-21.

**Arizona (-6.5) beat Baylor 41-17.** However, the Bears only had a 355-343 yard edge. The Wildcats outscored the Bears 20-0 in the fourth quarter.

**San Diego State (-10.5) beat San Jose State 25-3.** However, San Jose State had a 268-248 yard edge but missed two field goals were stopped on downs twice in San Diego State territory and played most of the game with the backup QB.

**Stanford (+4.5) upset California 31-10.** However, Cal had a 297-282 yard edge but were -3 in turnovers which included a long fumble return TD.

**Troy (-9.5) beat Georgia State 31-19.** However, Georgia State had 516-423 yard edge. The Panthers had five trips inside Troy territory come up empty.

#### Bad Beats

**The total in the Miami/Virginia Tech game was 49.** There were only 37 points scored with 3:30 left. VT scored a TD after converting a 4th & 11. Miami then went for style points and scored a 21-yard TD pass on 4th & 2 with :20 left.

#### Injuries/Personnel News

-Colorado State is expected to hire Connecticut head coach Jim Mora.

-Oklahoma State is expected to hire North Texas head coach Eric Morris.

-California has fired head coach Justin Wilcox. Nick Rolovich will serve as interim.

-Florida State will retain head coach Mike Norvell for 2026.

-Michigan RB Jordan Marshall is expected to play vs Ohio State this week.

-Colorado QB Julian Lewis is sitting out this week's game at Kansas State to preserve a redshirt. Kaidon Salter will get the start.

-Boise State QB Maddux Madsen is expected to miss another game.

-Louisville QB Miller Moss is questionable this week. He missed last week.

-Louisville WR Chris Bell will miss this week's game vs Kentucky.

-UCLA QB Nico Iamaleava (neck) is expected to play this week.

-West Virginia RB Diore Hubbard (Achilles) is out for the season.

-Ohio State WR Jeremiah Smith has been upgraded to available to play.

-Virginia LB Kam Robinson (knee) is out for the season.

-Notre Dame LB Kyngstonn Viliamu-Asa (knee) is out for the season.

-Fresno State head coach Matt Entz is non-committal on naming a starting QB for Saturday. Could be EJ Warner or Carson Conklin.

-San Jose State QB Walker Eget left last week's game due to injury and was seen on crutches. Freshman Tama Amisone replaced him.

#### Brad Powers' Radio/TV/Podcast Weekly Schedule This Fall

Per my new contracts with Covers and Hammer Betting Network (Hit the Books), I'm not doing as many shows this year.

Mon 12:00pm ET. Early best bets with Joe Osborne @Covers on Twitter/YouTube

Mon 5:00pm ET. Weekend recap with Joey Knish @HitTheBooks on YouTube

Thu 12:00pm ET. Big game bets with Joe Osborne @Covers on Twitter/YouTube.

Fri 9:00am ET. Weekend preview on Bill King show @NashSportsRadio

Fri 5:00pm ET. Weekend preview with Joey Knish @HitTheBooks on YouTube.

Sat:1:30pm ET. Halftime show of Big Noon Kickoff with with Joey Knish @HitTheBooks on YouTube.

@ indicates the Twitter handle.

#### Recapping Week 13 Best Bets

Our power ratings plays went 0-1 in week 13. Those are the plays that are 3 points or more off the Vegas lines. They have not done well the last three years and we're debating using them next year. VIP customers are 55-45-1 on top plays and 183-161-2 overall so far this season (see below).

#### VIP Records:

CFB Plays: 38-33-1 +0.22 units

CFB Leans: 68-58

NFL Plays: 17-12 +3.75 units

NFL Regular Season Leans: 56-58-1, NFL Preseason Leans: 4-0

# CFB and NFL Schedules with Vegas and Brad Powers Lines Week 14 Nov 27th-Dec 1st

<b>Thursday, Nov 27th</b>									
305 Green Bay	1:00	48.5	48	49	383 LSU	3:30	38.5	36.5	40
306 Detroit	FOX	-2.5	-2.5	-3	384 Oklahoma	ABC	-9	-10	-12
307 Kansas City	4:30	-3.5	-3.5	-4	385 Army	3:30	52.5	52	53
308 Dallas	CBS	51	52.5	52	386 UTSA	ESPN+	-7	-7.5	-7
309 Cincinnati	8:30	49.5	51.5	50	387 Alabama	7:30	-5	-6	-6
310 Baltimore	NBC	-10.5	-7	-8	388 Auburn	ABC	49.5	46.5	48
311 Navy	7:30	59.5	58	58	389 UAB	3:00	59.5	58.5	57
312 Memphis	ESPN	-7	-4.5	-4	390 Tulsa	ESPN+	-8	-8.5	-9
<b>Friday, Nov 28th</b>					391 Colorado	12:00	51.5	49.5	50
313 Chicago	3:00	44.5	44	46	392 Kansas State	FS1	-16	-17	-16
314 Philadelphia	Prime	-7	-7	-8	393 Cincinnati	3:30	60.5	57.5	55
315 Ohio	12:00	-6	-7	-6	394 TCU	FOX	-4	-3.5	-5
316 Buffalo	ESPN	50.5	44	42	397 Houston	12:00	61.5	60	58
317 Ole Miss	12:00	-8	-7	-7	398 Baylor	TNT	-2	-2.5	-2
318 Mississippi State	ABC	62.5	62.5	59	399 Troy	3:30	51.5	50.5	51
319 Iowa	12:00	-5	-6.5	-5	400 Southern Miss	ESPN+	-6.5	-6.5	-9
320 Nebraska	CBS	39.5	38.5	43	401 South Alabama	3:00	63.5	62.5	59
321 Kent State	12:00	46.5	45	44	402 Texas State	ESPN+	-7	-9	-9
322 Northern Illinois	CBSSN	-5	-5	-6	403 FIU	1:00	-10	-10	-9
323 Utah	12:00	-12	-11.5	-13	404 Sam Houston State	ESPN+	51.5	51	55
324 Kansas	ESPN	60.5	60	59	405 UL-Monroe	3:00	48.5	48.5	50
325 Arizona	9:00	49.5	-1.5	-2	406 UL-Lafayette	ESPN+	-13	-9.5	-12
326 Arizona State	FOX	PK	48.5	50	407 Missouri	3:30	-3	-2.5	-4
327 Air Force	3:00	-2	-2.5	-1	408 Arkansas	SECN	57.5	55	58
328 Colorado State	FS1	46.5	45.5	41	409 Charlotte	7:30	52.5	53	54
329 Georgia	3:30	-13	-14	-15	410 Tulane	ESPN	-28	-30	-28
330 Georgia Tech	ABC	59.5	59.5	57	411 Iowa State	12:00	-16	-14	-14
331 San Diego State	3:30	-1	-1	-2	412 Oklahoma State	ESPN	49.5	46	46
332 New Mexico	CBSSN	44.5	41.5	42	413 Northwestern	7:30	47.5	44.5	47
333 Boise State	4:00	-5	-3	-3	414 Illinois	FOX	-7	-7	-9
334 Utah State	CBS	55.5	55.5	53	415 Wisconsin	3:30	37.5	-1	39
335 Texas A&M	7:30	-2	-2.5	-2	416 Minnesota	FS1	-1	37.5	-1
336 Texas	ABC	51.5	51.5	54	417 Louisiana Tech	2:00	50.5	49.5	50
337 Indiana	7:30	-27	-28.5	-27	418 Missouri State	ESPN+	-3	-2.5	-4
338 Purdue	NBC	52.5	54.5	53	419 Western Kentucky	2:00	-3	-2.5	-3
395 Temple	3:30	66.5	65.5	62	420 Jacksonville State	ESPN+	55.5	55.5	53
396 North Texas	ESPN	-18	-19.5	-18	421 Central Florida	1:00	48.5	47.5	49
<b>Saturday, Nov 29th</b>					422 BYU	ESPN2	-18	-17.5	-17
339 Florida State	4:30	51.5	50.5	51	423 Middle Tennessee	3:00	54.5	52.5	52
340 Florida	ESPN2	-2	-1	-1	424 New Mexico State	ESPN+	-4	-4	-4
341 Texas Tech	12:00	-20	-23.5	-22	425 Fresno State	10:30	-2	-3.5	-3
342 West Virginia	ESPN	53.5	53.5	54	426 San Jose State	FS1	47.5	46	49
343 Georgia State	2:00	59.5	58.5	56	427 SMU	8:00	-10	-13.5	-11
344 Old Dominion	ESPN+	-24	-27.5	-24	428 California	ESPN2	53.5	53.5	51
345 East Carolina	12:00	-7	-7	-8	429 Notre Dame	10:30	-31	-32.5	-31
346 Florida Atlantic	ESPN+	68.5	67	66	430 Stanford	ESPN	52.5	49.5	53
347 Vanderbilt	3:30	64.5	65.5	66	431 UCLA	7:30	60.5	59	61
348 Tennessee	ESPN	-3.5	-2.5	-4	432 USC	NBC	-20	-21.5	-21
349 Georgia Southern	1:30	60.5	63.5	61	433 Oregon	3:30	-6	-6.5	-8
350 Marshall	ESPN+	-6	-8.5	-5	434 Washington	CBS	54.5	51	54
351 James Madison	3:45	-21	-21.5	-20	435 Kennesaw State	3:30	-2	-2	-3
352 Coastal Carolina	ESPN	53.5	53.5	54	436 Liberty	CBSSN	55.5	55	51
353 Kentucky	12:00	46.5	46.5	50	437 Oregon State	6:30	43.5	43	45
354 Louisville	ACCN	-4	-3	-2	438 Washington State	CW	-11	-13.5	-13
355 Rice	7:00	58.5	60	60	439 UNLV	9:00	-10	-7.5	-9
356 South Florida	ESPN+	-24	-28	-24	440 Nevada	CBSSN	53.5	53.5	51
357 Clemson	12:00	48.5	46.5	49	441 Wyoming	11:00	44.5	44.5	47
358 South Carolina	SECN	-1	-2.5	-3	442 Hawaii		-10	-8.5	-9
359 Arkansas State	2:30	56.5	54.5	53	<b>Sunday, Nov 30th</b>				
360 Appalachian State	ESPN+	-2	-2.5	-1	461 Houston	1:00	46.5	44.5	43
361 Wake Forest	3:30	55.5	55	54	462 Indianapolis	CBS	-3.5	-4.5	-5
362 Duke	ACCN	-4	-1	-2	463 Arizona	1:00	48.5	43.5	43
363 Ohio State	12:00	-11	-10	-10	464 Tampa Bay	FOX	-5.5	-2.5	-3
364 Michigan	FOX	45.4	44	44	465 Jacksonville	1:00	-7	-6.5	-5
365 Maryland	7:00	48.5	48.5	51	466 Tennessee	CBS	41.5	41.5	43
366 Michigan State	FS1	-4	-3.5	-3	467 L.A. Rams	1:00	-9.5	-10.5	-10
367 North Carolina	7:30	47.5	47.5	49	468 Carolina	FOX	45.5	45	44
368 NC State	ACCN	-8	-7.5	-7	469 New Orleans	1:00	42.5	42	49
369 Miami, FL	12:00	-6	-7	-7	470 Miami	FOX	-4.5	-6	-5
370 Pittsburgh	ABC	53.5	50.5	53	471 Atlanta	1:00	-1	-2.5	-2
371 Penn State	3:30	-10	-13.5	-11	472 N.Y. Jets	FOX	38.5	39.5	40
372 Rutgers	BTN	55.5	55.5	53	473 San Francisco	1:00	-6.5	-5	-5
373 Boston College	3:00	-3.5	-3	-1	474 Cleveland	CBS	39.5	36.5	35
374 Syracuse	CW	51.5	52.5	51	475 Minnesota	4:05	43.5	41	43
375 Virginia Tech	7:00	52.5	52.5	51	476 Seattle	FOX	-7	-13	-11
376 Virginia	ESPN	-11	-9.5	-11	477 Buffalo	4:25	-3.5	-3.5	-4
377 Toledo	12:00	-8	-10.5	-11	478 Pittsburgh	CBS	46.5	47	46
378 Central Michigan	ESPN+	45.5	44.5	45	479 Las Vegas	4:25	42.5	41	40
379 Ball State	12:00	42.5	41.5	45	480 L.A. Chargers	CBS	-8.5	-9.5	-10
380 Miami, OH	CBSSN	-17	-17.5	-15	481 Denver	8:20	-6.5	-6	-5
381 UTEP	1:00	51.5	55	55	482 Washington	NBC	43.5	43.5	43
382 Delaware	ESPN+	-7	-4	-5	<b>Monday, Dec 1st</b>				
					483 N.Y. Giants	8:15	46.5	46.5	46
					484 New England	ESPN	-7	-7.5	-6



## Games in Rotation Order

### Thursday, November 27th

**MEMPHIS 31 Navy 27.** Memphis has won 5 of the last 6 meetings but Navy upset them 56-44 last year as 9.5-point underdogs. With a win, Navy can share the AAC crown but they are unlikely to make it to the AAC Championship game unless Tulane or North Texas suffer a major upset loss. Navy is 3-7 ATS while Memphis is 8-3 ATS. However, the early week money has been on Navy here and we agree.

### Friday, November 28th

**Ohio 24 BUFFALO 18.** Ohio still has a shot at the MAC Championship while Buffalo needs a win to get to bowl eligibility. Buffalo does have the better ypp margin (+0.5 vs +0.3). Weather is the main factor here as temps will be just above freezing with 17 mph wind. That's why we've see the total drop 6 points.

**Ole Miss 33 MISSISSIPPI STATE 26.** Ole Miss has won 4 of the last 5 meetings. Plenty of drama here surrounding Ole Miss head coach Lane Kiffin. Will he stay or go? If Ole Miss wins, they're in the playoffs. If they lose, there's a good chance they are out. Mississippi State needs a win to get to bowl eligibility. They've already upset Arizona State and took both Tennessee and Texas to OT at home this year. We lean UNDER at current.

**Iowa 24 NEBRASKA 19.** Iowa has won 9 of the last 10 meetings including the last two by identical 13-10 scores. Each of the last 7 meetings has been decided by 7 points or less. Nebraska has the better ypp margin (+0.7 vs +0.6) but Iowa has played the tougher schedule (No. 17 vs No. 55). We lean OVER despite the chilly forecast.

**NORTHERN ILLINOIS 25 Kent State 19.** Both teams just playing for pride with no bowl aspirations. This will be the final MAC game for NIU which heads to the Mountain West next year (we're not fans of that move). We bet NIU -4.5. Better ypp margin (-0.6 vs -1.0) despite a tougher schedule (No. 103 vs No. 119), better defense (No. 52 vs No. 129) and better run game (No. 47 vs No. 132).

**Utah 36 KANSAS 23.** Utah scored two TD's in the final three minutes to escape Kansas State last week. The Utes allowed an incredible 472 rushing yards in the win. Kansas needs a win for bowl eligibility but the Jayhawks have lost 4 of 5. Lean Utah at current.

**Arizona 26 ARIZONA STATE 24.** ASU has won 6 of the last 8 meetings including 49-7 last year. Both teams are 8-3. Arizona has been better in the stats at +1.5 ypp margin (ASU +0.6). We lean OVER.

**Air Force 21 COLORADO STATE 20.** Air Force really misses starting QB Liam Szarka. The Falcons managed just 3 points and 161 yards last week vs New Mexico. It was by far their worst offensive performance of the season. Colorado State QB Darius Curry is suspended here. We bet UNDER and still lean that way.

† **Georgia 36 Georgia Tech 21.** @Mercedes-Benz Stadium in Atlanta, GA. Even though this is technically a GT home game, we expect just as many UGA fans in attendance, if not more. GT lost one of their biggest home games in recent history last week. We think they were exposed a bit as they easily could have 4 or 5 losses on the season. Georgia has won 7 straight since losing to Alabama going 5-2 ATS. Last year's 8OT thriller vs GT should have them focused.

**San Diego State 22 NEW MEXICO 20.** A win by San Diego State here and they are in the Mountain West Championship game. New Mexico is also likely in with a win. San Diego State is better in ypp margin (+1.4 vs +0.6). They have the better defense (No. 6 vs No. 49) and better run game (No. 34 vs No. 72).

**Boise State 28 UTAH STATE 25.** Boise State is likely in the Mountain West Championship game with a win. They got their first win with their backup QB last week as they ran over Colorado State. Bronco Mendenhall worked his magic again getting Utah State to bowl eligibility in his first year. A sharp group bet Utah State +3.5 on Wednesday. We prefer UNDER at current.

**Texas A&M 28 TEXAS 24.** Texas A&M is 11-0 for the first time since 1992. A win puts them in the SEC championship game and likely locks up a Top 4 seed regardless of that outcome. We like the OVER which got hit by a sharp group on Wednesday. Texas has gone OVER in 3 of their last 4 while A&M games are 8-3 to the OVER by 6.5 ppg.

**Indiana 40 PURDUE 13.** Does Indiana have motivation for margin with the Big Ten Championship game on deck? Purdue has played USC, Notre Dame, Michigan and Ohio State this year losing by an average of 17.8 ppg while covering 3 of them. We bet them +28.5.

**NORTH TEXAS 40 Temple 22.** North Texas head coach Eric Morris is heading to Oklahoma State. Will that cause some distractions here. The Mean Green are 9-2 ATS this year with an average cover of 9.9 ppg. Temple needs a win to get to bowl eligibility so we're expecting their best effort.

## HOME TEAM IN CAPS

### Saturday, November 29th

**FLORIDA 26 Florida State 25.** FSU needs a win to get to a bowl. Florida's season is basically over as evidenced of trailing Tennessee 31-0 at halftime last week. Florida has played the much tougher schedule (No. 1 vs No. 33) but FSU is statistically superior including a +1.9 ypp margin (vs -0.3) and No. 11 rush offense (UF No. 105). FSU has taken the early week money.

**Texas Tech 38 WEST VIRGINIA 16.** Texas Tech is in the Big 12 Championship with a win and also likely in the playoffs with a win. They are not only 10-1 straight up but also 10-1 ATS. Their closest win this season has come by 22 points. WVU has been pesky this year and has covered 4 straight. We liked Texas Tech at open. Not so much now.

**OLD DOMINION 40 Georgia State 16.** Georgia State is the worst ATS team in the country at 1-10 ATS failing to cover by 8.6 points per game. All 7 of their Sun Belt losses have come by 21 points or less so you're definitely paying a premium if you want to fade them. We can't get our numbers anywhere near this line.

**East Carolina 37 FLORIDA ATLANTIC 29.** ECU is off the blowout loss to UTSA which knocked them out of AAC contention. FAU lost a tough one to UConn that knocked them out of bowl contention. Expect a lot of tempo. ECU ranks No. 3 in plays per minute, FAU ranks No. 1.

**TENNESSEE 35 Vanderbilt 31.** Tennessee has won six straight in the series by an average of 26.7 points per game. Obviously, they are facing one of the best Vanderbilt teams in school history. With a win, Vandy would have a nice case to be in the CFB playoff but will need some upsets. We think Tennessee has an extra gear as evidenced by their 31-0 halftime score at Florida last week.

**MARSHALL 33 Georgia Southern 28.** Both teams are 5-6 needing a win to get to bowl eligibility. Marshall is better in ypp margin -0.2 vs -0.7 and had a misleading loss at Appalachian State last week (see page 1). With that being said, our ratings lean Georgia Southern here.

**James Madison 37 COASTAL CAROLINA 17.** James Madison has been going for style points but last week struggled with Washington State. They shouldn't have any problem here vs a banged up Coastal team off a 51-7 loss to South Carolina. They've already clinched bowl eligibility so not sure how much effort they'll put into this.

**LOUISVILLE 26 Kentucky 24.** Kentucky had won 5 straight in the series prior to last year's 41-14 loss. The Wildcats need one more win to get to bowl eligibility. We're not sure what frame of mind they are in after getting trounced by Vanderbilt last week. On the other side, how many key players will be out for Louisville? They basically punted last week's game vs SMU and got crushed.

**SOUTH FLORIDA 42 Rice 18.** How focused will USF be especially if their head coach is likely leaving? Rice got crushed last week vs North Texas but still has a shot at bowl eligibility. They actually have the better defense (No. 83 vs No. 98). We like them especially at +28.5.

**SOUTH CAROLINA 26 Clemson 23.** This is the first time since 2013 that SC is favored over Clemson. It shows just how bad Clemson's season has been relative to expectation considering that SC is 4-7. The Gamecocks have played the much tougher schedule (No. 4 vs No. 57) and they have got the offense going after firing OC Shula.

**APPALACHIAN STATE 27 Arkansas State 26.** Another matchup of a pair of 5-6 teams looking to get to bowl eligibility. App State is better in the stats at -0.4 ypp margin (vs -1.0). Despite both teams running a bunch of tempo, neither offense has been efficient ranking No. 96 and No. 106 in SP+ offensive ratings.

**DUKE 28 Wake Forest 26.** Duke has won three straight in the series. Wake has the better defense (No. 26 vs No. 108) and is better in ypp margin (+1.4 vs +0.2). We think Wake is the sharp side here but numbers matter. Duke opened -4 and now some places are trading Wake Forest -1.5. We're on the sidelines.

**Ohio State 27 MICHIGAN 17.** Ohio State was on a 15-1 straight up run in this series from 2004-2019. Then 2021 happened and the Wolverines have won four straight covering the games by an average of 19 points per game. Last year's 13-10 as 3-TD underdogs was one of the biggest shockers in recent history. Ohio State has gone 13-1-1 ATS since that game. They haven't really been tested this year though since the Texas game. How will they respond if Michigan has early success? The Wolverines are a quiet 9-2. Will OSU WR's Carnell Tate and Jeremiah Smith play? Together they can impact the spread a couple of points. We bet Michigan on the lookahead but are passing at current.

† **Michigan State 27 Maryland 24.** @Ford Field in Detroit, MI. Maryland enters on a 7-game losing streak. Michigan State enters on an 8-game losing streak. Maryland is better in ypp margin at -0.3 vs MSU's -0.6. We bet Maryland and OVER as you don't have to worry about weather here.

**NC STATE 28 North Carolina 21.** The Wolfpack have won four straight in the series. They're coming off another big home win on Friday as they upset Florida State as 6.5-point underdogs. NC is better in ypp margin thanks to a big defensive edge (No. 36 vs No. 127). NC State has played the tougher schedule (No. 18 vs No. 65). Pass.

**Miami, FL 30 PITTSBURGH 23.** Huge game in the ACC as both still have a shot at the ACC title although neither control their destiny. Miami is still hoping for a playoff berth. Pitt is off their biggest win of the season as they upset Georgia Tech last week. They are now 6-1 SU and 6-1 ATS with Mason Heintschel at QB. Miami went for style points last week scoring a TD on 4th down with :20 left vs VT. If give the opportunity, they'll do it again here. We prefer OVER.

**PENN STATE 32 Rutgers 21.** Penn State was 0-6 ATS under James Franklin and are now on a 4-1 ATS run under interim Terry Smith. Last week's 37-10 win over Nebraska was their best performance of the season. Both teams are 5-6 and need a win for bowl eligibility. We expect both to be motivate. Penn State is +0.6 in ypp margin, Rutgers ranks No. 135 at -1.9. Early money is on Penn State.

**Boston College 26 SYRACUSE 25.** Battle for last place in the ACC. BC is off a bye while Syracuse is off the worst loss in school history losing 70-7 to Notre Dame. It was 35-0 after the first quarter. The Orange trailed 21-0 before ND's offense took a single snap. With that being said, the Cuse do have the slightly better run game and defense.

**VIRGINIA 31 Virginia Tech 20.** Virginia is 1-19 vs Virginia Tech the last 20 years! ONE AND NINETEEN! If this line holds, it will be their largest favorite role in the series since 1991. A win puts them in the ACC Championship game. Lot of pressure vs a VT program already excited to start the James Franklin era. Early money is on VT.

**Toledo 28 CENTRAL MICHIGAN 17.** Both teams are in the mix for the MAC Championship game to face Western Michigan. Both teams are 8-3 ATS. The difference is Toledo ranks No. 5 in the country in ypp margin at +2.5 while CMU ranks No. 67 at +0.2.

**MIAMI, OH 30 Ball State 15.** If chalk holds in the other games, Miami is likely to be in the MAC Championship with a win here. Not sure we're wild about laying 3 possessions though with two teams that run some of the slowest tempo in CFB. Lean Ball State.

**DELAWARE 30 Utep 25.** Neither team has been impressive in recent form. UTEP is 1-7 ATS in their last 8. Delaware is 1-6 ATS in their last 7. UTEP is better in ypp margin (-0.1 vs -0.7).

**OKLAHOMA 26 Lsu 14.** A win here by Oklahoma not only locks up a playoff spot but they'd also likely have a home game. Amazing considering their season win total was only 6.5. LSU is 3-8 ATS this season and nearly lost as a huge favorite to WKU last week. We like the Sooners here despite their offensive struggles.

**UTSA 30 Army 23.** We think this is a "Buy Low, Sell High" spot. Army is off a loss as a double-digit favorite, UTSA off a game where they covered the spread by 5 TD's. Also lean OVER.

**Alabama 27 AUBURN 21.** Alabama is 1-5 ATS in their last 6 trips to Jordan-Hare. They are 3-3 straight up and each of their last two visits included fortunate wins vs bad Auburn teams. Auburn is already playing much better on offense with just one play caller after firing Hugh Freeze. They started true frosh Deuce Knight last week and he accounted for 6 TD's. It looks like they will go back to Daniels here as they preserved his redshirt. Alabama is -1 ppg and -4 ypg on the road this year. Expect another classic Iron Bowl.

**TULSA 33 Uab 24.** UAB is in complete turmoil with an interim coach and also dealing with a situation where a player stabbed two teammates right before last week's game. Tulsa is playing their best ball of the season. We bet Tulsa.

**KANSAS STATE 33 Colorado 17.** Kansas State absolutely blew last week's game at Utah. They led by 12 in the fourth quarter, rushed for nearly 500 yards and still lost the game. They need win to get to bowl eligibility. Colorado laid down in the fourth quarter getting outscored 21-0 by Arizona State. We lean Colorado who will start Salter at QB.

**TCU 30 Cincinnati 25.** Cincinnati is off back-to-back disappointing performances at home vs Arizona and BYU. They're catching a TCU team off a close win over Houston. Cincy is better in the run game and ypp. However, we lean TCU and the OVER.

**BAYLOR 30 Houston 28.** Baylor is in big turmoil right now. They fired their AD and because of it are keeping head coach Aranda for another year. The Bears are 2-9 ATS this year and need a win just to make a bowl. Some had them winning the Big 12 prior to the season. Houston is off a tough loss to TCU but we trust Willie Fritz to get his players back up. Lean UNDER.

**SOUTHERN MISS 30 Troy 21.** Winner goes to the SBC game. SM hasn't played optimally the last two games. They do here.

**TEXAS STATE 34 South Alabama 25.** Texas State is much better than their record and are off back-to-back wins trying to get to bowl eligibility. They get bet on in the market each week.

**Fiu 32 SAM HOUSTON STATE 23.** FIU got to bowl eligibility under first-year coach Willie Simmons. It was a good hire and it's already paying off. Sam Houston made a bad hire. Pass.

**UL-LAFAYETTE 31 UL-Monroe 19.** ULL is on a 14-3 run in the rivalry and need a win to get to a bowl game. Early money is on ULM. We disagree and like ULL at -9.5.

**Missouri 31 ARKANSAS 27.** Arkansas might go down as the best 2-win team in CFB history. They still are +3 total points on the season and are +42 ypg. However, we think Missouri bounces back on offense after last week. We bet Missouri -2.5 and it's still available.

**TULANE 41 Charlotte 13.** For some reason, the playoff committee loves Tulane. We have USF, North Texas, James Madison and ODU power-rated above them in the G5. They should have no trouble here vs a banged up Charlotte team just playing out the season.

**Iowa State 30 OKLAHOMA STATE 16.** Oklahoma State has been feisty in recent weeks with three straight covers. They've nearly upset Kansas State and UCF. Iowa State is not great in the favorite role.

**ILLINOIS 28 Northwestern 19.** "Buy Low, Sell High" spot. We got Illinois off an upset loss to Wisconsin taking on a Northwestern team that just clinched bowl eligibility in dramatic fashion. It's one of our biggest power ratings disparities.

**MINNESOTA 20 Wisconsin 19.** Wisconsin won Paul Bunyan's Axe 14 straight times from 2004-2017 but Minnesota has won 4 of the last 7. Wisconsin is playing their best ball of the season with four straight covers and two big upset wins. They have flipped to favorite here. We lean Minny at current as they play much better at home this year.

**MISSOURI STATE 27 Louisiana Tech 23.** LT clinched bowl eligibility last week in an OT win over Liberty. Missouri State can't go to a bowl this year but they are better in the stats.

**Western Kentucky 28 JACKSONVILLE STATE 25.** Winner goes to the CUSA Championship game. Both teams are +0.2 in ypp margin and have played similar schedules. Jacksonville State is the better run team but WKU is 9-2 ATS on the season.

**BYU 33 Ucf 16.** With a win, BYU goes to the Big 12 Championship game. The Cougars are 8-3 ATS and defied all preseason expectations. UCF needs a win to get to a bowl but are on a 0-4 ATS run.

**NEW MEXICO STATE 28 Middle Tennessee 24.** Both teams did get a rare win last week but we don't have much interest.

**Fresno State 26 SAN JOSE STATE 23.** San Jose State QB Walker Eget is likely out for this game and they will have to go to the freshman Tama Amisone. Who knows what Fresno is going to do at QB.

**Smu 31 CALIFORNIA 20.** SMU goes to the ACC championship with a win here. Remarkable to do it two years in a row in the first two years. Cal fired head coach Justin Wilcox after last week's loss to rival Stanford. Nick Rolovich is the interim. Can't get to this number.

**NOTRE DAME 42 Stanford 11.** ND looks like they are going for style points as they try to secure another playoff berth. Last week they led Syracuse 21-0 before their offense even took a snap (two Pick 6's and a block punt TD). Their 70 points was the most for them since 1932. They're taking on a Stanford team off a big win over Cal. The Cardinal have played better at home this year. We prefer OVER.

**USC 41 UCLA 20.** USC is off the loss to Oregon that knocked them out of the playoffs. UCLA has now failed to cover in 5 straight after the interim shine has worn off. Early week money is on USC. Lean OVER.

**OREGON 31 Washington 23.** The Ducks got their biggest win of the season so far as they took advantage of some USC special teams errors. They moved up one spot in the playoff rankings but can still ill afford a loss if they want to feel safe and host a playoff game. Washington is off back-to-back blowout win. Quietly the Huskies rank No. 13 in ypp margin (+1.9). If the weather is clear, we like OVER.

**Kennesaw State 27 LIBERTY 24.** Kennesaw can get to the CUSA Championship with a win here. The Owls were 50/1 in the preseason to win it. Meanwhile, Liberty was +140 and had a win total of 9.5. The Flames are the most disappointing team in the G5.

**WASHINGTON STATE 29 Oregon State 16.** Oregon State won the first matchup 10-7 on November 1st. Washington State is going for a bowl under a first-year coach. They get revenge.

**Unlv 30 NEVADA 21.** Nevada is playing their best ball of the season off back-to-back outright upset wins. UNLV has a shot at 10 wins and the Mountain West championship game. We lean UNDER.

**HAWAII 28 Wyoming 19.** Both were disappointments last week. Wyoming has the better ypp margin (-0.1 vs -0.3) and the better defense and run game. Early week money on them.



# 2025 College Football Power Ratings (Vegas Ratings Not AP Poll Style)

Rk	School	Start	Now	Diff	Rk	School	Start	Now	Diff	Rk	School	Start	Now	Diff
1.	Ohio State	90.15	93.15	+3.0	51.	Old Dominion	58.87	68.87	+10.0	101.	Oklahoma State	63.11	53.11	-10.0
2.	Notre Dame	87.28	92.28	+5.0	52.	Wake Forest	59.13	68.63	+9.5	102.	Troy	57.01	53.01	-4.0
3.	Indiana	79.40	90.40	+11.0	53.	Tulane	67.67	68.17	+0.5	103.	Arkansas State	52.96	52.96	0.0
4.	Oregon	85.50	88.50	+3.0	54.	Kansas	72.94	67.94	-5.0	104.	San Jose State	60.95	52.95	-8.0
5.	Texas Tech	76.47	88.47	+12.0	55.	Northwestern	63.23	67.73	+4.5	105.	Missouri State	46.24	52.74	+6.5
6.	Texas A&M	83.40	87.90	+4.5	56.	Wisconsin	74.06	66.56	-7.5	106.	Oregon State	61.68	52.68	-9.0
7.	Georgia	88.75	87.25	-1.5	57.	Memphis	65.38	66.38	+1.0	107.	Liberty	60.10	52.60	-7.5
8.	Alabama	89.10	86.10	-3.0	58.	Toledo	61.54	66.04	+4.5	108.	Central Michigan	48.48	52.48	+4.0
9.	Miami (FL)	81.09	83.59	+2.5	59.	NC State	69.25	65.75	-3.5	109.	Wyoming	54.83	52.33	-2.5
10.	Utah	75.86	83.36	+7.5	60.	Boise State	73.73	65.23	-8.5	110.	Georgia Southern	59.69	51.69	-8.0
11.	Ole Miss	80.86	82.86	+2.0	61.	Michigan State	68.68	65.18	-3.5	111.	Louisiana Tech	52.37	51.37	-1.0
12.	Oklahoma	81.64	82.64	+1.0	62.	Rutgers	70.65	65.15	-5.5	112.	Air Force	58.77	51.27	-7.5
13.	Tennessee	82.07	82.07	0.0	63.	East Carolina	56.93	64.43	+7.5	113.	Jacksonville State	51.60	51.10	-0.5
14.	Texas	89.56	82.06	-7.5	64.	Minnesota	72.72	64.22	-8.5	114.	FIU	48.21	50.71	+2.5
15.	USC	79.03	81.53	+2.5	65.	Navy	64.95	63.95	-1.0	115.	Appalachian State	55.47	50.47	-5.0
16.	Vanderbilt	72.89	81.39	+8.5	66.	San Diego State	52.82	63.82	+11.0	116.	Nevada	50.08	50.08	0.0
17.	Missouri	76.16	80.66	+4.5	67.	Maryland	63.68	63.68	0.0	117.	Buffalo	57.48	49.98	-7.5
18.	Michigan	83.48	79.98	-3.5	68.	UCF	66.14	63.64	-2.5	118.	Rice	51.09	49.59	-1.5
19.	Penn State	90.79	78.79	-12.0	69.	West Virginia	66.26	63.26	-3.0	119.	Delaware	47.92	48.92	+1.0
20.	Iowa	76.85	77.85	+1.0	70.	UTSA	64.54	63.04	-1.5	120.	Coastal Carolina	55.41	48.91	-6.5
21.	BYU	72.33	77.83	+5.5	71.	Virginia Tech	70.38	62.88	-7.5	121.	Eastern Michigan	48.38	48.38	0.0
22.	Washington	75.25	77.25	+2.0	72.	Washington State	55.81	62.31	+6.5	122.	Colorado State	56.21	48.21	-8.0
23.	Auburn	79.61	76.61	-3.0	73.	UCLA	70.20	62.20	-8.0	123.	UAB	48.97	47.47	-1.5
24.	SMU	78.50	76.50	-2.0	74.	California	63.37	61.87	-1.5	124.	Northern Illinois	52.66	46.66	-6.0
25.	Illinois	76.45	75.45	-1.0	75.	North Carolina	67.81	61.81	-6.0	125.	Akron	46.61	46.61	0.0
26.	South Carolina	79.03	75.03	-4.0	76.	Connecticut	59.75	61.75	+2.0	126.	UTEP	47.71	46.21	-1.5
27.	Arizona	65.78	74.78	+9.0	77.	UNLV	62.47	61.47	-1.0	127.	Bowling Green	51.81	45.81	-6.0
28.	Clemson	85.55	74.55	-11.0	78.	Purdue	55.56	61.06	+5.5	127.	Georgia State	52.31	45.81	-6.5
29.	Pittsburgh	70.73	74.23	+3.5	79.	New Mexico	48.43	60.43	+12.0	129.	New Mexico State	46.25	45.25	-1.0
30.	TCU	76.13	74.13	-2.0	80.	Stanford	59.56	60.06	+0.5	130.	Middle Tennessee	46.97	44.97	-2.0
31.	Florida State	71.62	74.12	+2.5	81.	Texas State	59.71	59.71	0.0	131.	UL-Monroe	52.22	44.72	-7.5
32.	Arkansas	74.94	73.94	-1.0	82.	Utah State	50.61	59.11	+8.5	132.	Kent State	36.96	42.46	+5.5
33.	LSU	84.15	73.65	-10.5	83.	Army	62.52	59.02	-3.5	133.	Charlotte	47.51	41.51	-6.0
34.	Florida	82.36	73.36	-9.0	84.	Colorado	69.37	58.87	-10.5	134.	Ball State	43.05	41.05	-2.0
35.	Mississippi State	67.31	72.81	+5.5	85.	Ohio	59.43	58.43	-1.0	135.	Sam Houston State	49.69	40.19	-9.5
36.	Cincinnati	70.10	72.60	+2.5	86.	Hawaii	56.38	58.38	+2.0	136.	Massachusetts	44.23	31.23	-13.0
37.	USF	63.53	72.53	+9.0	87.	Boston College	68.34	58.34	-10.0	<b>Biggest Gains From Start of Season</b>		<b>Biggest Losses From Start of Season</b>		
38.	Iowa State	75.52	72.52	-3.0	88.	Southern Miss	51.23	57.73	+6.5	North Texas	+12.5	Massachusetts	-13.0	
39.	Virginia	66.46	72.46	+6.0	89.	Western Michigan	49.34	57.34	+8.0	Texas Tech	+12.0	Penn State	-12.0	
40.	Kansas State	78.26	72.26	-6.0	90.	Fresno State	58.23	56.23	-2.0	New Mexico	+12.0	Syracuse	-11.5	
41.	Georgia Tech	74.41	71.91	-2.5	91.	Kennesaw State	44.36	55.86	+11.5	Kennesaw State	+11.5	Clemson	-11.0	
42.	Louisville	77.87	71.87	-6.0	92.	South Alabama	59.62	55.62	-4.0	Indiana	+11.0	Colorado	-10.5	
43.	James Madison	64.56	71.56	+7.0	93.	Western Kentucky	53.60	55.60	+2.0	San Diego St	+11.0	LSU	-10.5	
44.	North Texas	58.95	71.45	+12.5	94.	Temple	48.53	55.53	+7.0	Old Dominion	+10.0	Boston College	-10.0	
45.	Kentucky	69.63	71.13	+1.5	95.	Syracuse	66.62	55.12	-11.5	Wake Forest	+9.5	Oklahoma State	-10.0	
46.	Arizona State	79.83	70.83	-9.0	96.	Marshall	52.60	55.10	+2.5	Arizona	+9.0	Sam Houston St	-9.5	
47.	Baylor	77.59	70.59	-7.0	97.	UL-Lafayette	60.15	54.65	-5.5	USF	+9.0	Florida	-9.0	
48.	Houston	69.52	70.02	+0.5	98.	Miami (OH)	56.85	54.35	-2.5	Tulsa	+9.0	Arizona State	-9.0	
49.	Duke	70.50	70.00	-0.5	99.	Florida Atlantic	50.93	53.93	+3.0	Vanderbilt	+8.5			
50.	Nebraska	76.16	69.16	-7.0	100.	Tulsa	44.44	53.44	+9.0					

## 2025 Week 14 College Football Power Ratings by Conference

American			MAC			Sun Belt			Big 12			SEC						
Rk	Team	Rating	Rk	Team	Rating	Rk	Team	Rating	Rk	Team	Rating	Rk	Team	Rating				
37.	USF	72.53	58.	Toledo	66.04	43.	James Madison	71.56	74.	California	61.87	19.	Penn State	78.79				
44.	North Texas	71.45	85.	Ohio	58.43	51.	Old Dominion	68.87	75.	North Carolina	61.81	20.	Iowa	77.85				
53.	Tulane	68.17	89.	Western Michigan	57.34	81.	Texas State	59.71	80.	Stanford	60.06	22.	Washington	77.25				
57.	Memphis	66.38	98.	Miami (OH)	54.35	88.	Southern Miss	57.73	87.	Boston College	58.34	25.	Illinois	75.45				
63.	East Carolina	64.43	108.	Central Michigan	52.48	92.	South Alabama	55.62	95.	Syracuse	55.12	50.	Nebraska	69.16				
65.	Navy	63.95	117.	Buffalo	49.98	96.	Marshall	55.10	Big 12	Rk	Team	Rating	55.	Northwestern	67.73			
70.	UTSA	63.04	121.	Eastern Michigan	48.38	97.	UL-Lafayette	54.65					5.	Texas Tech	88.47	56.	Wisconsin	66.56
83.	Army	59.02	124.	Northern Illinois	46.66	102.	Troy	53.01					10.	Utah	83.36	61.	Michigan State	65.18
94.	Temple	55.53	125.	Akron	46.61	103.	Arkansas State	52.96					21.	BYU	77.83	62.	Rutgers	65.15
99.	Florida Atlantic	53.93	127.	Bowling Green	45.81	110.	Georgia Southern	51.69	27.	Arizona	74.78	64.	Minnesota	64.22				
100.	Tulsa	53.44	132.	Kent State	42.46	115.	Appalachian State	50.47	30.	TCU	74.13	67.	Maryland	63.68				
118.	Rice	49.59	134.	Ball State	41.05	120.	Coastal Carolina	48.91	36.	Cincinnati	72.60	73.	UCLA	62.20				
123.	UAB	47.47	136.	Massachusetts	31.23	127.	Georgia State	45.81	38.	Iowa State	72.52	78.	Purdue	61.06				
133.	Charlotte	41.51				131.	UL-Monroe	44.72	40.	Kansas State	72.26	SEC	Rk	Team	Rating			
CUSA			Mountain West			ACC			46.	Arizona State	70.83					6.	Texas A&M	87.90
									47.	Baylor	70.59					7.	Georgia	87.25
									48.	Houston	70.02					8.	Alabama	86.10
Rk	Team	Rating	Rk	Team	Rating	Rk	Team	Rating	54.	Kansas	67.94	11.	Ole Miss	82.86				
91.	Kennesaw State	55.86	60.	Boise State	65.23	9.	Miami (FL)	83.59	68.	UCF	63.64	12.	Oklahoma	82.64				
93.	Western Kentucky	55.60	66.	San Diego State	63.82	24.	SMU	76.50	74.55	69.	West Virginia	63.26	13.	Tennessee	82.07			
105.	Missouri State	52.74	77.	UNLV	61.47	28.	Clemson	74.23	74.12	84.	Colorado	58.87	14.	Texas	82.06			
107.	Liberty	52.60	79.	New Mexico	60.43	29.	Pittsburgh	74.23	74.12	101.	Oklahoma State	53.11	16.	Vanderbilt	81.39			
111.	Louisiana Tech	51.37	82.	Utah State	59.11	31.	Florida State	74.12	72.46	Big Ten	Rk	Team	Rating	17.	Missouri	80.66		
113.	Jacksonville State	51.10	86.	Hawaii	58.38	39.	Virginia	72.46	71.91					23.	Auburn	76.61		
114.	FIU	50.71	90.	Fresno State	56.23	41.	Georgia Tech	71.91	71.87					26.	South Carolina	75.03		
119.	Delaware	48.92	104.	San Jose State	52.95	42.	Louisville	71.87	70.00					32.	Arkansas	73.94		
126.	UTEP	46.21	109.	Wyoming	52.33	49.	Duke	70.00	68.63	3.	Indiana	90.40	33.	LSU	73.65			
129.	New Mexico State	45.25	112.	Air Force	51.27	52.	Wake Forest	68.63	65.75	4.	Oregon	88.50	34.	Florida	73.36			
130.	Middle Tennessee	44.97	116.	Nevada	50.08	59.	NC State	65.75	62.88	15.	USC	81.53	35.	Mississippi State	72.81			
135.	Sam Houston State	40.19	122.	Colorado State	48.21	71.	Virginia Tech	62.88		18.	Michigan	79.98	45.	Kentucky	71.13			

## Week 14 Computer Projected Lines for Every CFB Game

For the past eight seasons we have posted computer projected lines for every game on Wednesday. **Games where there was of difference of more than 3 points saw our computer lines actually beat the Vegas line at a 506-441-14 (53.4%) clip! Last week our computer went 2-1 and for the season now stands at 19-29-2.** That's pretty solid and actually better than our own handicapping in some seasons. Keep in mind, these computer lines don't take into consideration off-the-field factors like revenge or flat spots or if there are late-week injuries. They are basically a power-rating number difference between the two teams that also takes into consideration the home field advantage.

Of the 2 games where our computer is off more than 3 points compared to the Vegas line (highlighted), our favorite team this week to back would be **Illinois -7**.

The Comp column is the computer projected line and the Diff column is the difference between the Vegas line and the Computer line. "+" numbers in the difference column say back the underdog. "-" numbers in the difference

Thursday, Nov 27th	Line	Comp	Diff
311 Navy			
312 Memphis	-4.5	-5.2	-0.7
Friday, Nov 28th	Line	Comp	Diff
315 Ohio			
316 Buffalo	+7.0	+6.2	+0.8
317 Ole Miss			
318 Mississippi State	+7.0	+7.6	-0.6
319 Iowa			
320 Nebraska	+6.5	+6.2	+0.3
321 Kent State			
322 Northern Illinois	-5.0	-6.2	-1.2
323 Utah			
324 Kansas	+11.5	+13.2	-1.7
325 Arizona			
326 Arizona State	+1.5	+1.2	+0.3
327 Air Force			
328 Colorado State	+2.5	+0.8	+1.7
329 Georgia			
330 Georgia Tech	+14.0	+15.3	-1.3
331 San Diego State			
332 New Mexico	+1.0	+1.9	-0.9
333 Boise State			
334 Utah State	+3.0	+3.9	-0.9
335 Texas A&M			
336 Texas	+2.5	+2.8	-0.3
337 Indiana			
338 Purdue	+28.5	+27.3	+1.2
395 Temple			
396 North Texas	-19.5	-17.9	+1.6
Saturday, Nov 29th	Line	Comp	Diff
339 Florida State			
340 Florida	-1.0	-2.0	-1.0
341 Texas Tech			
342 West Virginia	+23.5	+22.5	+1.0
343 Georgia State			
344 Old Dominion	-27.5	-25.1	+2.4
345 East Carolina			
346 Florida Atlantic	+7.0	+8.5	-1.5
347 Vanderbilt			
348 Tennessee	-2.5	-3.9	-1.4
349 Georgia Southern			
350 Marshall	-8.5	-5.7	+2.8
351 James Madison			
352 Coastal Carolina	+21.5	+20.4	+1.1
353 Kentucky			
354 Louisville	-3.0	-3.5	-0.5
355 Rice			
356 South Florida	-28.0	-24.7	<b>+3.3</b>
357 Clemson			
358 South Carolina	-2.5	-3.2	-0.7
359 Arkansas State			
360 Appalachian St	-2.5	-0.3	+2.2
361 Wake Forest			
362 Duke	-1.0	-3.6	-2.6
363 Ohio State			
364 Michigan	+10.0	+9.7	+0.3
365 Maryland			
366 Michigan State	-3.5	-2.5	+1.0
367 North Carolina			
368 NC State	-7.5	-6.7	+0.8
369 Miami, FL			
370 Pittsburgh	+7.0	+7.1	-0.1
371 Penn State			
372 Rutgers	+13.5	+11.6	+1.9
373 Boston College			
374 Syracuse	+3.0	+0.5	+2.5

Saturday, Nov 29th	Line	Comp	Diff
375 Virginia Tech			
376 Virginia	-9.5	-11.8	-2.3
377 Toledo			
378 Central Michigan	+10.5	+11.6	-1.1
379 Ball State			
380 Miami, OH	-17.5	-15.6	+1.9
381 UTEP			
382 Delaware	-4.0	-4.7	-0.7
383 LSU			
384 Oklahoma	-10.0	-12.5	-2.5
385 Army			
386 UTSA	-7.5	-6.8	+0.7
387 Alabama			
388 Auburn	+6.0	+6.7	-0.7
389 UAB			
390 Tulsa	-8.5	-7.7	+0.8
391 Colorado			
392 Kansas State	-17.0	-16.4	+0.6
393 Cincinnati			
394 TCU	-3.5	-4.0	-0.5
397 Houston			
398 Baylor	-2.5	-3.1	-0.6
399 Troy			
400 Southern Miss	-6.5	-6.7	-0.2
401 South Alabama			
402 Texas State	-9.0	-6.1	+2.9
403 FIU			
404 Sam Houston St	+10.0	+9.3	+0.7
405 UL-Monroe			
406 UL-Lafayette	-9.5	+12.2	-2.7
407 Missouri			
408 Arkansas	+2.5	+4.2	-1.7
409 Charlotte			
410 Tulane	-30.0	-29.2	+0.8
411 Iowa State			
412 Oklahoma State	+14.0	+16.4	-2.4
413 Northwestern			
414 Illinois	-7.0	-10.0	<b>-3.0</b>
415 Wisconsin			
416 Minnesota	+1.0	-0.4	+1.4
417 Louisiana Tech			
418 Missouri State	-2.5	-3.1	-0.6
419 Western Kentucky			
420 Jacksonville State	+2.5	+2.3	+0.2
421 Central Florida			
422 BYU	-17.5	-17.2	+0.3
423 Middle Tennessee			
424 New Mexico St	-4.0	-2.0	+2.0
425 Fresno State			
426 San Jose State	+3.0	+1.3	+1.7
427 SMU			
428 California	+13.5	+12.4	+1.1
429 Notre Dame			
430 Stanford	+32.5	+30.2	+2.3
431 UCLA			
432 USC	-21.5	-22.3	-0.8
433 Oregon			
434 Washington	+6.5	+8.0	-1.5
435 Kennesaw State			
436 Liberty	+2.0	+0.8	+1.2
437 Oregon State			
438 Washington State	-13.5	-12.4	+1.1
439 UNLV			
440 Nevada	+7.5	+9.4	-1.9
441 Wyoming			
442 Hawaii	-8.5	-8.3	+0.2

## Betting CFB Openers

Every Sunday in Vegas at 11am PT, Circa Sports is one of the first books in the world to release CFB lines and we bet them every week. We think it's the best value bets we make all week. 2020 was the first season where we tracked every single bet we made and posted them in the weekly newsletters. We were very pleased with our 119-76-3 (61%) record on these Sunday bets with an average line value of 2.6 ppg! In 2021, we were 224-196-5 (53.3%) vs the Circa openers with an average line value of 1.8 ppg. In 2022, we were 314-262-14 (54.5%, CLV 417-122-51 +1.65 ppg). In 2023, we were 405-358-6 (53.4%, CLV 577-137-55 +2.09 ppg). So far this season we are 214-166-1 56.3% (CLV 275-67-39 +1.71 ppg) Below is some of what we bet already for Week 14 which includes bets we made in the summer for this week.

\$550 (301) Western Michigan -5.5 (Draft Kings)  
 \$550 (304) Massachusetts +16.5 (Draft Kings)  
 \$550 (315) Ohio -4.5 (Draft Kings)  
 \$510 (318) Mississippi State +9.5 (Fan Duel)  
 \$550 (318) Mississippi State UNDER 63.5 (Fan Duel)  
 \$530 (322) Northern Illinois -4.5 (Fan Duel)  
 \$600 (328) Colorado State +3.5 (ESPN Bet)  
 \$550 (328) Colorado State UNDER 51.5 (Fan Duel)  
 \$550 (330) Georgia Tech UNDER 60.5 (Fan Duel)  
 \$590 (336) Texas +3.5 (Fan Duel)  
 \$550 (338) Purdue +28.5 (Draft Kings)  
 \$600 (339) Florida State +4.5 (Fan Duel)  
 \$550 (341) Texas Tech -19.5 (Draft Kings)  
 \$610 (348) Tennessee -2.5 (Fan Duel)  
 \$575 (349) Georgia Southern +7.5 (ESPN Bet)  
 \$550 (353) Kentucky OVER 47.5 (ESPN Bet)  
 \$550 (353) Kentucky +4.5 (ESPN Bet)  
 \$550 (358) South Carolina +2.5 (Draft Kings)  
 \$550 (360) Appalachian St UNDER 55.5 (Fan Duel)  
 \$525 (364) Michigan +13.5 (Fan Duel)  
 \$550 (365) Maryland +4.5 (Fan Duel)  
 \$550 (365) Maryland OVER 46.5 (Fan Duel)  
 \$575 (369) Miami, FL -6.5 (Fan Duel)  
 \$550 (369) Miami, FL OVER 48.5 (Fan Duel)  
 \$575 (374) Syracuse +3.5 (Fan Duel)  
 \$550 (377) Toledo -9.5 (Fan Duel)  
 \$550 (379) Ball State +17.5 (Draft Kings)  
 \$550 (382) Delaware -3.5 (Draft Kings)  
 \$550 (384) Oklahoma -8.5 (Draft Kings)  
 \$550 (385) Army OVER 49.5 (Fan Duel)  
 \$575 (387) Alabama -5.5 (Fan Duel)  
 \$575 (390) Tulsa -7.5 (Fan Duel)  
 \$550 (390) Tulsa UNDER 62.5 (Fan Duel)  
 \$550 (391) Colorado +18.5 (Fan Duel)  
 \$550 (394) TCU -3 (Draft Kings)  
 \$550 (394) TCU UNDER 59.5 (Fan Duel)  
 \$550 (398) Baylor UNDER 61.5 (Fan Duel)  
 \$550 (400) Southern Miss -5.5 (Draft Kings)  
 \$550 (402) Texas State -6.5 (Fan Duel)  
 \$550 (402) Texas State UNDER 64.5 (Fan Duel)  
 \$525 (405) UL-Monroe OVER 47.5 (Fan Duel)  
 \$590 (407) Missouri -2.5 (Fan Duel)  
 \$550 (412) Oklahoma State +15.5 (Fan Duel)  
 \$610 (414) Illinois -6.5 (Fan Duel)  
 \$550 (418) Missouri State -3 (Draft Kings)  
 \$550 (425) Fresno State +1.5 (Fan Duel)  
 \$620 (433) Oregon -6.5 (Fan Duel)  
 \$470 (433) Oregon OVER 51.5 (Fan Duel)  
 \$550 (435) Kennesaw State -1.5 (Draft Kings)

### Game of Year Bets we made in the summer (posted in the CFB Preview Guide):

\$525 (318) Mississippi St +14.5 (Fan Duel)  
 \$550 (329) Georgia -11.5 (Draft Kings)  
 \$550 (364) Michigan +6 (Westgate)  
 \$550 (368) NC State -1 (Westgate)  
 \$550 (434) Washington +12.5 (Fan Duel)  
 \$550 (437) Oregon St +1.5 (Westgate)  
 \$550 (440) Nevada +14 (South Point)

### Versus Circa Sports Opening numbers:

If you got in front of every 3-point or more move in the FBS vs FBS markets (sides and totals)...congrats you are 236-170-2 (58.1%) this year.

If you faded every 3-point or more move right before kickoff...you are 210-188-10 (52.8%).

### Numbers matter!



## Games in Rotation Order

## HOME TEAM IN CAPS

### Thursday, November 27th

**DETROIT 26 Green Bay 23.** Per Evan Abrams of the Action Network, favorites on Thanksgiving are 51-9 straight up and 40-20 ATS since 2004. There's two thought processes. Number one, half less prep time means less about the "X's and O's" and more about the "Jimmy's and Joe's." Second, specifically on Thanksgiving with the world watching, there's seems to be more motivation to not lay an egg as a favorite. This is the first time the Packers have been an underdog this year and Detroit is coming off an OT game where their defense allowed 517 yards. Both teams are +1.0 in ypp margin but the Lions have played the much tougher schedule (No. 7 vs No. 27). Don't see a ton of value but we lean Lions at -2.5 to avenge an earlier loss to the Packers.

**Kansas City 28 DALLAS 24.** Road favorites are 25-1 straight up and 20-6 ATS on Thanksgiving since 2004. Remarkably, the Lions and Cowboys have not both won and covered on Thanksgiving since 1994 so keep an eye on the Lions result. The Chiefs got a much-needed win last week over the Colts although they didn't cover. It should not have went to OT as the Chiefs had a dominating 494-255 yard edge. Totals players note Chiefs games are on a 6-0 run to the UNDER. Meanwhile, Dallas rallied from 21 points down for the first time in 11 years and they upset Philadelphia. Dak became the all-time leading passer in Cowboys history. We'll be looking for a cheap KC money-line price on gameday.

**BALTIMORE 29 Cincinnati 21.** Joe Burrow is expected to return here after missing the last nine games with a turf toe. The Bengals have less than a 1% chance of making the playoffs so we're not sure it's the best idea to return. The Bengals defense is the worst ever through 11 games according to DVOA. That's a sight for sore eyes for a Ravens offense that has struggled vs the Browns and Jets the last two weeks. We expect there to be some rust for Burrow. We lean Baltimore and UNDER.

### Friday, November 28th

**PHILADELPHIA 27 Chicago 19.** Great matchup for a "Black Friday". If the playoffs started today, the Eagles would be the No. 2 seed, the Chicago Bears would shockingly be the No. 3 seed. Neither team has been impressive as the Bears are -0.4 in ypp margin while the Eagles are -0.2. The difference is the Eagles have played the 3rd toughest schedule (per Sagarin) while the Bears have played the 3rd easiest. What frame of mind will the Eagles be in after blowing a 21-point lead vs Dallas on Sunday? They haven't done that vs any team since 1999. Remember two years ago, this franchise self-destructed after a hot start. However, tough backing the Bears who haven't played an above average team since losing to the Ravens by 14 over a month ago. We lean Eagles.

### Sunday, November 30th

**INDIANAPOLIS 24 Houston 19.** If the playoffs started today, the Colts would be the No. 3 seed and the Texans would be the first team left out. The Colts are coming off an OT loss while the Texans have extra rest after upsetting the Bills on Thursday night. Houston sacked Josh Allen eight times and were +3 in turnovers. Indy is +1.1 in ypp margin while Houston is +0.5. Houston has played the tougher schedule (No. 6 vs No. 29). Early week money is on the Colts. We're passing for now.

**TAMPA BAY 23 Arizona 20.** Tampa has been a mess since coming off the bye. They've lost all three SU and ATS. Last week they trailed the Rams 31-7 at halftime. Arizona is also on a 0-3 SU/ATS run and lost in OT to the Jags last week despite a +4 turnover margin. Tampa is actually worse in the stats at -0.6 ypp vs Arizona's -0.4. Tampa has played the much tougher schedule though (No. 2 vs No. 21). The main factor is will Baker Mayfield play after having a shoulder sprain last week? Reading the market tea leaves say he's questionable at best.

**Jacksonville 24 TENNESSEE 19.** Obviously, the Titans are the worst team in the NFL. They are dead last in ypp margin and rank dead last in DVOA. However, they have covered three games in a row. This is a horrible spot for the Jags. They are playing their 4th road game in five weeks. The Jags have played OT games in three of the last four weeks. Meanwhile, Tennessee is playing their 4th straight home game with a bye also in there. Make it four straight covers for the Titans.

**L.A. Rams 27 CAROLINA 17.** The Rams now rank No. 1 in Sagarin's ratings and DVOA. They are 8-3 ATS. L.A. led Tampa Bay 31-7 at halftime last week. The Rams are playing a Carolina team that is playing for a 13th straight week. The Panthers are 6-6 but are -0.5 in ypp margin and rank just No. 27 in DVOA and Sagarin. Safe to say they're overrated but that's why they are a double-digit home underdog here. The UNDER is on a 5-1 run in Rams' games. That's where our lean is.

**MIAMI 23 New Orleans 18.** The Dolphins come in off a bye. They have won and covered in three of their last four and only have the Jets on deck. Both teams are -0.5 in ypp margin and have played similar strength of schedules. The Saints are just 3-8 ATS and lost outright as a favorite to the Falcons last week. Saints games have gone on a 7-0 run to the UNDER. That's where our lean is.

**Atlanta 21 N.Y. JETS 19.** The Falcons picked up a surprising win last week. Kirk Cousins had a decent outing including a pair of TD's. Despite a 4-7 record, Atlanta is +0.2 in ypp margin. Meanwhile, the Jets got another cover last week and are 3-0-1 ATS in their last four games. They are -0.4 in ypp margin. With a total in the "30's" we like the Jets as a teaser option here at "+8.5."

**San Francisco 20 CLEVELAND 15.** There is some major concern for weather here. Right now, a decent chance for rain with models showing sustained winds around 20mph and gusts pushing 35mph. The 49ers are traveling on a short week playing their 13th straight week. The Browns got a win in Shedeur Sanders' debut despite a 8.7 QBR. He can thank his defense that sacked the Raiders 10 times. Myles Garrett has 14 sacks in the last five games. No one has ever done that in a 5-game period before. Could be ugly.

**SEATTLE 27 Minnesota 16.** Seattle led Tennessee 30-10 in the middle of the third quarter last week and at that point, the Titans only TD came via a 90-yard punt return. However, Tennessee backdoored the Seahawks who are still No. 1 in ypp margin (+1.7) and No. 2 in DVOA. Meanwhile, the Vikings managed just four yards and three turnovers in the second half vs Green Bay. JJ McCarthy is out (we don't expect him to ever make it as an NFL starter) and rookie Max Brosmer is expected to start. We're anxious to see how high this line will go. We don't think Brosmer is that big of a downgrade, if at all considering how bad McCarthy has played.

**Buffalo 25 PITTSBURGH 21.** If the playoffs started today, the Bills would be the No. 7 seed and the Steelers would be out. Both are coming off a loss. Obviously, more of a trust factor with Josh Allen compared to the Steelers current QB state (Mason Rudolph or a less than 100% way over the hill Aaron Rodgers).

**L.A. CHARGERS 25 Las Vegas 15.** The Raiders are a complete mess. They lost to the Browns last week who were starting a rookie 3rd string QB. Las Vegas allowed 10 sacks and Pete Carroll fired Chip Kelly 11 games after making him the highest paid OC in the NFL. Meanwhile, the Chargers are off a bye. They're looking to bolster their playoff resume (current No. 5 seed). Seems too easy but L.A. is just 2-6-1 ATS in their last 9.

**Denver 24 WASHINGTON 19.** Both teams are off a bye. The Broncos entered the bye having won eight straight games (5-3 ATS). The Commanders entered their bye having lost six straight games (0-6 ATS). Jayden Daniels has returned to practice but is a long-shot to play here. A decent "Buy Low, Sell High" spot.

### Monday, December 1st

**NEW ENGLAND 26 N.Y. Giants 20.** Both teams are playing a 13th straight game. New England has won nine straight games. They covered the first five in that stretch but you're starting to pay a premium as they are 1-2-1 ATS in their last four. The Giants have had five losses this year when leading in the fourth quarter including last week's OT loss to the Lions. Per Sagarin, the Giants have played the toughest schedule in the NFL while the Pats have played the easiest. Jaxson Dart took first-team reps on Wednesday.

### Week 12 Trends

	Favorites-Dogs
Straight Up	10-4
ATS	5-9
	Home-Away
Straight Up	9-5
ATS	8-6
	Totals (O/U)
Over-Under	4-10

### Season To-Date

	Favorites-Dogs
Straight Up	121-53-1 3 pick-em's
ATS	88-83-4
	Home-Away
Straight Up	95-75-1
ATS	86-82-3
	Totals (O/U)
Over-Under	89-86-3

# 2025 NFL Schedules with Logs

## Arizona (SU: 3-8, ATS: 5-6, O/U: 7-4)

Date	Opponent	Line	Score	ATS/O/U
9/7	at New Orleans	-5*	20-13 W	u44
9/14	Carolina	-7	27-22 L	u45
9/21	at San Francisco	+1*	15-16 W	u44
9/25	Seattle	+1	20-23 L	u44
10/5	Tennessee	-7*	21-22 L	u41
10/12	at Indianapolis	+8*	27-31 W	u46
10/19	Green Bay	+7	23-27 W	u44
10/26				
11/3	at Dallas	+3	27-17 W	u53
11/9	at Seattle	+7	22-44 L	u44
11/16	San Francisco	+3*	22-41 L	u48
11/23	Jacksonville-ot	+2*	24-27 L	u46
11/30	at Tampa Bay			
12/7	L.A. Rams			
12/14	at Houston			
12/21	Atlanta			
12/28	at Cincinnati			
1/4	at L.A. Rams			

## Atlanta (SU: 4-7, ATS: 5-5-1, O/U: 4-6-1)

Date	Opponent	Line	Score	ATS/O/U
9/7	Tampa Bay	PK	23-6 W	u47
9/14	at Minnesota	+3	22-6 W	u44
9/21	at Carolina	-4*	0-30 L	u44
9/28	Washington	-2*	34-27 W	u43
10/5				
10/13	Buffalo	+3*	24-14 W	u49
10/19	at San Francisco	-1	10-20 L	u47
10/26	Miami	-7	10-34 L	p44
11/2	at New England	+5*	23-24 W	u45
11/9	† Indianapolis-ot	+6	25-31 P	u48
11/16	Carolina-ot	-4*	27-30 L	u41
11/23	at New Orleans	+1*	24-10 W	u41
11/30	at N.Y. Jets			
12/7	Seattle			
12/14	at Tampa Bay			
12/21	at Arizona			
12/28	L.A. Rams			
1/4	New Orleans			

## Baltimore (SU: 6-5, ATS: 4-7, O/U: 7-4)

Date	Opponent	Line	Score	ATS/O/U
9/7	at Buffalo	-1	40-41 L	o51
9/14	Cleveland	-12*	41-17 W	u46
9/22	Detroit	-4*	30-38 L	o54
9/28	at Kansas City	-2*	20-37 L	u48
10/5	Houston	+2*	10-44 L	u41
10/12	L.A. Rams	+7	3-17 L	u43
10/19				
10/26	Chicago	-2*	30-16 W	u45
10/30	at Miami	-7*	28-6 W	u51
11/9	at Minnesota	-4*	27-19 W	u49
11/16	at Cleveland	-7*	23-16 L	u38
11/23	N.Y. Jets	-14	23-10 L	u44
11/27	Cincinnati			
12/7	Pittsburgh			
12/14	at Cincinnati			
12/21	New England			
12/28	at Green Bay			
1/4	at Pittsburgh			

## Buffalo (SU: 7-4, ATS: 5-6, O/U: 5-6)

Date	Opponent	Line	Score	ATS/O/U
9/7	Baltimore	+1	41-40 W	o51
9/14	at N.Y. Jets	-5*	30-10 W	u47
9/18	Miami	-11	31-21 L	o50
9/28	New Orleans	-14*	31-19 L	u49
10/5	New England	-7*	20-23 L	u48
10/13	at Atlanta	-3*	14-24 L	u49
10/19				
10/26	at Carolina	-7*	40-21 W	u48
11/2	Kansas City	+2*	28-9 W	u53
11/9	at Miami	-8	13-30 L	u50
11/16	Tampa Bay	-6*	44-32 W	u45
11/20	at Houston	-4*	19-23 L	u44
11/30	at Pittsburgh			
12/7	Cincinnati			
12/14	at New England			
12/21	at Cleveland			
12/28	Philadelphia			
1/4	N.Y. Jets			

## Carolina (SU: 6-6, ATS: 7-5, O/U: 6-6)

Date	Opponent	Line	Score	ATS/O/U
9/7	at Jacksonville	+4*	10-26 L	u45
9/14	at Arizona	+7	22-27 W	u45
9/21	at Atlanta	+4*	30-40 W	u44
9/28	at New England	+5*	13-42 L	u42
10/5	Miami	+1	27-24 W	u44
10/12	Dallas	+3	30-27 W	u46
10/19	at N.Y. Jets	-1	13-6 W	u40
10/26	Buffalo	+7	9-40 L	u48
11/2	at Green Bay	+13	16-13 W	u43
11/9	New Orleans	-5*	7-17 L	u38
11/16	at Atlanta-ot	+4*	30-27 W	u41
11/24	at San Francisco	+7*	9-20 L	u49
11/30	L.A. Rams			
12/7				
12/14	at New Orleans			
12/21	Tampa Bay			
12/28	Seattle			
1/4	at Tampa Bay			

## Chicago (SU: 8-3, ATS: 7-4, O/U: 6-4-1)

Date	Opponent	Line	Score	ATS/O/U
9/8	Minnesota	PK	24-27 L	u43
9/14	at Detroit	+6*	21-52 L	u46
9/21	Dallas	+1	31-14 W	u50
9/28	at Las Vegas	+2	25-24 W	u47
10/5				
10/13	at Washington	+5*	25-24 W	p49
10/19	New Orleans	-3*	26-14 W	u43
10/26	at Baltimore	+2*	16-10 L	u45
11/2	at Cincinnati	-3	47-42 W	o51
11/9	N.Y. Giants	-4*	24-20 L	u44
11/16	at Minnesota	+2*	19-17 W	u48
11/23	Pittsburgh	-2*	31-28 W	u47
11/28	at Philadelphia			
12/7	at Green Bay			
12/14	Cleveland			
12/21	Green Bay			
12/28	at San Francisco			
1/4	Detroit			

## Cincinnati (SU: 3-8, ATS: 4-7, O/U: 7-4)

Date	Opponent	Line	Score	ATS/O/U
9/7	at Cleveland	-4*	17-16 L	u48
9/14	at Jacksonville	-3*	31-27 W	u49
9/21	at Minnesota	-3*	10-48 L	o42
9/28	at Denver	+7*	3-28 L	u44
10/5	Detroit	+9*	24-37 L	u44
10/12	at Green Bay	+14	18-27 W	u44
10/16	Pittsburgh	+5*	33-31 W	u45
10/26	N.Y. Jets	-5*	38-39 L	u44
11/3	Chicago	+3	42-47 L	o51
11/16				
11/23	Pittsburgh	+5*	12-34 L	u47
11/23	New England	+7*	20-26 W	u51
11/27	at Baltimore			
12/7	at Buffalo			
12/14	Baltimore			
12/21	at Miami			
12/28	Arizona			
1/4	Cleveland			

## Cleveland (SU: 3-8, ATS: 5-6, O/U: 6-5)

Date	Opponent	Line	Score	ATS/O/U
9/7	Cincinnati	+4*	16-17 W	u48
9/14	at Baltimore	+12*	17-41 L	u48
9/21	at Green Bay	+7*	13-10 W	u40
9/28	at Detroit	+10	10-34 L	u44
10/5	† Minnesota	+3*	17-21 L	u35
10/12	at Pittsburgh	+6*	9-23 L	u38
10/19	Miami	-2*	31-6 W	u34
10/26	at New England	+7	13-32 L	u40
11/2				
11/9	at N.Y. Jets	-2	20-27 L	o37
11/16	Baltimore	+7	16-23 W	u38
11/23	at Las Vegas	+3	24-10 W	u36
11/30	San Francisco			
12/7	Tennessee			
12/14	at Chicago			
12/21	Buffalo			
12/28	Pittsburgh			
1/4	Tennessee			

## Dallas (SU: 5-5-1, ATS: 6-5, O/U: 7-4)

Date	Opponent	Line	Score	ATS/O/U
9/4	at Philadelphia	+8	20-24 W	u47
9/14	N.Y. Giants-ot	-4*	40-37 L	u44
9/21	at Chicago	-1	14-31 L	u50
9/28	Green Bay-ot	+6*	40-40 L	u46
10/5	at N.Y. Jets	+1*	37-22 W	u44
10/12	at Carolina	-3	27-30 L	u46
10/19	Washington	-1*	44-22 W	o55
10/26	at Denver	+4	24-44 L	u52
11/3	Arizona	-3	17-27 L	u53
11/17	at Las Vegas	-3*	33-16 W	u48
11/23	Philadelphia	+3	24-21 W	u48
11/27	Kansas City			
12/4	at Detroit			
12/14	Minnesota			
12/21	L.A. Chargers			
12/25	at Washington			
1/4	at Kansas City			

## Denver (SU: 9-2, ATS: 5-5-1, O/U: 3-8)

Date	Opponent	Line	Score	ATS/O/U
9/7	Tennessee	-8*	20-12 L	u42
9/14	at Indianapolis	-1	28-29 L	u43
9/21	at L.A. Chargers	+3	20-23 P	u45
9/28	Cincinnati	-7*	28-3 W	u44
10/5	at Indianapolis	+4*	21-17 W	u44
10/12	N.Y. Jets	-7	13-11 L	u43
10/19	N.Y. Giants	-8*	33-32 L	u44
10/26	Dallas	-4	44-24 W	o52
11/2	at Houston	+2*	18-15 W	u41
11/6	Las Vegas	-8*	10-7 L	u42
11/16	Kansas City	+4*	22-19 W	u45
11/30	at Washington			
12/7	at Las Vegas			
12/14	Green Bay			
12/21	Kansas City			
12/25	at Kansas City			
1/4	at Kansas City			

## Detroit (SU: 7-4, ATS: 6-5, O/U: 6-5)

Date	Opponent	Line	Score	ATS/O/U
9/7	at Green Bay	+1	13-27 L	u46
9/14	Chicago	-6*	52-21 W	u48
9/22	at Baltimore	+4*	38-30 W	u54
9/28	Cleveland	-10	34-10 W	u44
10/5	at Cincinnati	-9*	37-24 W	u49
10/12	at Kansas City	+2*	17-30 L	u51
10/20	Tampa Bay	-6	24-9 W	u47
10/26				
11/2	Minnesota	-9*	24-27 L	u44
11/9	at Washington	-8	44-22 W	u48
11/16	at Philadelphia	+2*	9-16 L	u45
11/23	N.Y. Giants-ot	-14	34-27 L	o50
11/27	Green Bay			
12/4	Dallas			
12/14	at L.A. Rams			
12/21	Pittsburgh			
12/25	at Minnesota			
1/4	at Chicago			

## Green Bay (SU: 7-3-1, ATS: 4-7, O/U: 5-6)

Date	Opponent	Line	Score	ATS/O/U
9/7	Detroit	-1	27-13 W	u48
9/11	Washington	-3	27-18 W	u48
9/21	at Cleveland	-7*	10-13 L	u40
9/28	at Dallas-ot	-6*	40-40 L	u46
10/5				
10/12	Cincinnati	-14	27-18 L	u44
10/19	at Arizona	-7	27-23 L	u44
10/26	at Pittsburgh	-2*	35-25 W	u45
11/2	Carolina	-13	13-16 L	u43
11/10	Philadelphia	PK	7-10 L	u45
11/16	at N.Y. Giants	-7*	27-20 L	u41
11/23	Minnesota	-6*	23-6 W	u41
11/30				
12/7	Chicago			
12/14	at Denver			
12/20	at Chicago			
12/28	Baltimore			
1/4	at Minnesota			

## Houston (SU: 6-5, ATS: 5-6, O/U: 3-7-1)

Date	Opponent	Line	Score	ATS/O/U
9/7	at L.A. Rams	+3	9-14 L	u43
9/15	Tampa Bay	-2*	19-20 L	u42
9/21	at Jacksonville	+1*	10-17 L	u42
9/28	Tennessee	-7*	26-0 W	u39
10/5	at Baltimore	-2*	44-10 W	u41
10/12				
10/20	at Seattle	+3	19-27 L	u41
10/26	San Francisco	-3	26-15 W	p41
11/2	Denver	-2	15-18 L	p41
11/9	Jacksonville-ot	-1	36-29 W	u38
11/16	at Tennessee	-5*	16-13 L	u37
11/20	Buffalo	+4*	23-19 W	u44
11/30	at Indianapolis			
12/7	at Arizona			
12/14	Las Vegas			
12/21	at L.A. Chargers			
12/28	at Indianapolis			
1/4	Indianapolis			

## Indianapolis (SU: 8-3, ATS: 7-3-1, O/U: 6-5)

Date	Opponent	Line	Score	ATS/O/U
9/7	Miami	-1	33-8 W	u47
9/14	Denver	-1	29-28 W	u43
9/21	at Tennessee	-6*	41-20 W	u42
9/28	at L.A. Rams	+3*	20-27 L	u41
10/5	Las Vegas	-7*	40-6 W	u46
10/12	Arizona	-8*	31-27 L	u46
10/19	at L.A. Chargers	+2*	38-24 W	u49
10/26	Tennessee	-15	38-14 W	u52
11/2	at Pittsburgh	-3	20-27 L	u47
11/9	† Atlanta	-6	31-25 P	u48
11/16				
11/23	at Kansas City-ot	+4*	20-23 W	u50
11/30	Houston			
12/7	at Jacksonville			
12/14	at Seattle			
12/22	San Francisco			
12/28	Jacksonville			
1/4	at Houston			

## Jacksonville (SU: 7-4, ATS: 6-4-1, O/U: 6-5)

9/14	at Carolina	+4*	20-17 W
9/21	at Cincinnati	+3*	27-31 L
9/28	at Houston	-1*	17-10 W
9/28	at San Francisco	+3	26-21 W
10/6	Kansas City	+3*	31-28 W
10/12	Seattle	+1	12-20 L
10/19	† L.A. Rams	+3	7-35 L
10/26			
11/2	at Las Vegas-ot	-1	30-29 P
11/2	at Houston-ot	+1	29-36 L
11/9	at L.A. Chargers	+2	35-6 W
11/23	at Arizona	-2*	27-24 W
11/30	at Tennessee		
12/7	Indianapolis		
12/14	N.Y. Jets		
12/21	at Denver		
12/28	at Indianapolis		
1/4	Tennessee		

**Kansas City ATS: 6-5, ATS: 5-6, O/U: 3-8**

Date	Opponent	Line	Score	ATS
------	----------	------	-------	-----



# 2025 CFB Schedules with Logs

## Air Force (SU: 3-8, ATS: 4-7, O/U: 6-5)

Date	Opponent	Line	Score	ATS/O/U
8/30	Bucknell	-32	49-13 W	o54'
9/6				
9/13	at Utah State	-4	30-49 L	o51'
9/20	Boise State	+10	37-49 L	o52
9/27	Hawaii	-6	35-44 L	o52
10/4	at Navy	+13	31-34 W	o51
10/11	at UNLV	+6	48-51 W	o65'
10/18	Wyoming	-3	24-21 L	u57

10/25				
11/1	Army	+1	17-20 L	u48
11/8	at San Jose State	+6	26-16 W	u68
11/15	at Connecticut	+7	16-26 L	u64'
11/22	New Mexico	+3	3-20 L	u53

## Akron (SU: 5-7, ATS: 6-6, O/U: 7-5)

Date	Opponent	Line	Score	ATS/O/U
8/28	Wyoming	+5	0-10 L	u48
9/6	at Nebraska	+33	0-68 L	u48
9/13	at UAB	+12	28-31 W	o58'
9/20	Duquesne	-10	51-7 W	o51
9/27	at Toledo	+21	3-45 L	u49
10/4	Central Michigan	+7	28-22 W	o47
10/11	Miami (OH)	+11	7-20 L	u47
10/18	at Ball State	-2	28-42 L	u44
10/25	at Buffalo	+10	24-16 W	u49

11/1				
11/4	Massachusetts	-12	44-10 W	o51'
11/11	Kent State-ot	-7	35-42 L	o49
11/18	at Bowling Green	+2	19-16 W	u47

## Alabama (SU: 9-2, ATS: 7-3-1, O/U: 4-6-1)

Date	Opponent	Line	Score	ATS/O/U
8/30	at Florida State	-13	17-31 L	o47'
9/6	UL-Monroe	-34	73-0 W	o49
9/13	Wisconsin	-18	38-14 W	o45'
9/20				
9/27	at Georgia	+2	24-21 W	u53'
10/4	Vanderbilt	-12	30-14 W	u57'
10/11	at Missouri	-3	27-24 P	p51
10/18	Tennessee	-9	37-20 W	u61
10/25	at South Carolina	-12	29-22 L	o48

11/1				
11/8	LSU	-10	20-9 W	u49'
11/15	Oklahoma	-6	21-23 L	u46'
11/22	Eastern Illinois	-50	56-0 W	u57'

## Appalachian St (SU: 5-6, ATS: 5-6, O/U: 5-6)

Date	Opponent	Line	Score	ATS/O/U
8/29	† Charlotte	-3	34-11 W	u48'
9/6	Lindenwood	-31	20-13 L	u56'
9/13	at Southern Miss	-3	22-38 L	o55'
9/20				
9/27	at Boise State	+17	14-47 L	o59'
10/4	Oregon State	-2	27-23 W	u53'
10/11	at Georgia State	-3	41-20 W	o55'
10/18	Coastal Carolina	-10	37-45 L	o48'
10/25	at Old Dominion	+13	21-24 W	u62

11/1				
11/6	Georgia Southern	-5	23-25 L	u61'
11/15	at James Madison	+21	10-58 L	o53
11/22	Marshall	+3	26-29 W	u56'

## Arkansas State (SU: 8-3, ATS: 7-4, O/U: 4-7)

Date	Opponent	Line	Score	ATS/O/U
8/30	Hawaii	-15	40-6 W	u55
9/6	Weber State	-32	48-3 W	u56'
9/12	Kansas State	+1	23-17 W	u56'
9/20				
9/27	at Iowa State	+4	14-39 L	o48
10/4	Oklahoma State	-21	41-13 W	u57
10/11	BYU-2ot	+2	27-33 L	o46'
10/18	at Houston	-2	28-31 L	o47'

10/25				
11/1	at Colorado	-3	52-17 W	o52'
11/8	Kansas	-6	24-20 L	u56
11/15	at Cincinnati	+5	30-24 W	u56'
11/22	Baylor	-6	41-17 W	u61

## Arizona State (SU: 8-3, ATS: 6-5, O/U: 4-7)

Date	Opponent	Line	Score	ATS/O/U
8/30	Northern Arizona	-30	38-19 L	o52'
9/6	at Mississippi St	-6	20-24 L	u59
9/13	Texas State	-18	34-15 W	u61
9/20	at Baylor	+2	27-24 W	u60'
9/26	TCU	-2	27-24 W	u54'
10/4				
10/11	at Utah	+9	10-42 L	o42'
10/18	Texas Tech	+7	26-22 W	u52'
10/25	Houston	-7	16-24 L	u46'

11/1	at Iowa State	+7	24-19 W	u48'
11/8				
11/15	West Virginia	-10	25-23 L	o46'
11/22	at Colorado	-7	42-17 W	o47'

## Arkansas (SU: 2-9, ATS: 4-7, O/U: 8-3)

Date	Opponent	Line	Score	ATS/O/U
8/30	Alabama A&M	-48	52-7 L	u64'
9/6	Arkansas State	-23	56-14 W	o62
9/13	at Ole Miss	+3	35-41 L	o60'
9/20	at Memphis	-7	31-32 L	o59'
9/27	Notre Dame	+5	13-56 L	o63'
10/4				
10/11	at Tennessee	+10	31-34 W	u68'
10/18	Texas A&M	-7	42-45 W	o57'
10/25	Auburn	-2	24-33 L	o55'
11/1	Mississippi St	-5	35-38 L	o66'
11/8				
11/15	at LSU	+4	22-23 W	u58'
11/22	at Texas	+9	37-52 L	o58
11/29	Missouri			

## Arkansas State (SU: 5-6, ATS: 7-4, O/U: 3-8)

Date	Opponent	Line	Score	ATS/O/U
8/30	SE Missouri St	-14	42-24 W	o60
9/6	at Arkansas	+23	14-56 L	o62
9/13	Iowa State	+21	16-24 W	u56
9/20	at Kennesaw St	-4	21-28 L	u57
9/27	at UL-Monroe	+1	16-28 L	u55
10/4	Texas State	+14	31-30 W	u44
10/11				
10/14	at South Alabama	+9	15-14 W	u57
10/25	Georgia Southern	+1	34-24 W	u59'
11/1	at Troy	+7	23-10 W	u52'
11/8	Southern Miss	+6	21-27 W	u54'
11/15				
11/20	UL-Lafayette	-2	30-34 L	o54
11/29	at Appalachian State			

## Army (SU: 5-5, ATS: 4-6, O/U: 3-7)

Date	Opponent	Line	Score	ATS/O/U
8/29	Tarleton St-2ot	-14	27-30 L	o47
9/6	at Kansas State	+17	24-21 W	u48
9/13				
9/20	North Texas-ot	+2	38-45 L	o50
9/25	at East Carolina	+3	6-28 L	u53'
10/4	at UAB	-6	31-13 W	u56
10/11	Charlotte	-17	24-7 L	u45
10/18	at Tulane	+10	17-24 W	u44
10/25				
11/1	at Air Force	-1	20-17 W	u48
11/8	Temple	-7	14-13 L	u45'
11/15				
11/22	Tulsa	-10	25-26 L	o44
11/28	at UTSA			

## Auburn (SU: 5-6, ATS: 4-7, O/U: 4-7)

Date	Opponent	Line	Score	ATS/O/U
8/29	at Baylor	-1	38-24 W	o57
9/6	Ball State	-42	42-3 L	u52'
9/13	South Alabama	-26	31-15 L	u56'
9/20	at Oklahoma	+6	17-24 L	u47
9/27	at Texas A&M	+6	10-16 W	u51'
10/4				
10/11	Georgia	+4	10-20 L	u46'
10/18	Missouri-2ot	+1	17-23 L	u43'
10/25	at Arkansas	+2	33-24 W	o55'
11/1	Kentucky	-12	3-10 L	u44'
11/8	at Vanderbilt-ot	+6	38-45 L	o47
11/15				
11/22	Mercer	-26	62-17 W	o61'

## Ball State (SU: 4-7, ATS: 6-5, O/U: 4-7)

Date	Opponent	Line	Score	ATS/O/U
8/30	at Purdue	+16	0-31 L	u48'
9/6	at Auburn	+42	3-42 W	u52'
9/13	New Hampshire	-3	34-29 W	o46
9/20	at Connecticut	+21	25-31 W	o52'
9/27				
10/4	Ohio	+14	20-14 W	u52
10/11	at Western Mich	+9	0-42 L	u43
10/18	Akron	+2	42-28 W	o44
10/25	at No. Illinois	+6	7-21 L	u42
11/1				
11/5	Kent State	-3	17-13 W	u49
11/15	Eastern Michigan	+2	9-24 L	u48
11/22	at Toledo	+28	9-38 L	o45'
11/29	at Miami (OH)			

## Baylor (SU: 5-6, ATS: 2-9, O/U: 6-5)

Date	Opponent	Line	Score	ATS/O/U
8/29	Auburn	+1	24-38 L	o57
9/6	at SMU-2ot	+3	48-45 W	o65'
9/13	Samford	-51	42-7 L	u64'
9/20	Arizona State	-2	24-27 L	u58'
9/27	at Oklahoma St	-21	45-27 L	o58'
10/4	Kansas State	-4	35-34 L	o60'
10/11				
10/18	at TCU	+3	36-42 L	o66'
10/25	at Cincinnati	+3	20-41 L	u58
11/1	UCF	-3	30-3 W	u58'
11/8				
11/15	Utah	+9	28-55 L	o60'
11/22	at Arizona	+6	17-41 L	u61
11/29	Houston			

## Boise State (SU: 7-4, ATS: 7-3-1, O/U: 6-5)

Date	Opponent	Line	Score	ATS/O/U
8/28	at USF	-4	7-34 L	u61
9/5	East Washington	-33	51-14 W	o61
9/13				
9/20	at Air Force	-10	49-37 W	o52
9/27	Appalachian St	-17	47-14 W	o59'
10/4	at Notre Dame	+21	7-28 W	u62'
10/11	New Mexico	-14	41-25 W	o58'
10/18	UNLV	-13	56-31 W	o60
10/24	at Nevada	-21	24-3 P	u51
11/1	Fresno State	-17	7-30 L	u48
11/8				
11/15	at San Diego St	+2	7-17 L	u41'
11/22	Colorado State	-17	49-21 W	o45'
11/29	at Utah State			

## Boston College (SU: 1-10, ATS: 5-6, O/U: 8-3)

Date	Opponent	Line	Score	ATS/O/U
8/30	Fordham	-35	66-10 W	o53'
9/6	at Mich St-2ot	+3	40-42 L	o45'
9/13	at Stanford	-14	20-30 L	o45'
9/20				
9/27	California	-6	24-28 L	u54
10/4	at Pittsburgh	+7	7-48 L	u54'
10/11	Clemson	+14	10-41 L	u54'
10/18	Connecticut	+2	23-38 L	o58
10/25	at Louisville	+25	24-38 W	o54'
11/1	Notre Dame	+31	10-25 W	u55'
11/8	SMU	+10	13-45 L	o54'
11/15	Georgia Tech	+16	34-36 W	o61
11/22				
11/29	at Syracuse			

## Bowling Green (SU: 3-8, ATS: 4-7, O/U: 4-7)

Date	Opponent	Line	Score	ATS/O/U
8/28	Lafayette	-21	26-7 L	u43'
9/6	at Cincinnati	+22	20-34 W	u53'
9/13	Liberty	+6	23-13 W	u56
9/20	at Louisville	+26	17-40 W	o51
9/27	at Ohio	+7	20-35 L	o50
10/4				
10/11	Toledo	+11	28-23 W	o45'
10/18	Central Michigan	-3	6-27 L	u44
10/25	at Kent State	-7	21-24 L	u48
11/1	Buffalo	-2	3-28 L	u44
11/8	at Eastern Mich	+3	21-27 L	u49
11/15				
11/18	Akron	-2	16-19 L	u47'
11/25	at Massachusetts			

## Buffalo (SU: 5-5, ATS: 3-7-1, O/U: 6-5)

Date	Opponent	Line	Score	ATS/O/U
8/28	at Minnesota	+16	10-23 W	u42'
9/6	at Saint Francis	-38	45-6 W	o48'
9/13	at Kent State	-24	31-28 L	o46'
9/20	Troy	-5	17-21 L	u51
9/27	Connecticut	+3	17-20 P	u51
10/4	Eastern Mich-ot	-9	31-30 L	o53'
10/11				
10/18	at Massachusetts	-16	28-21 L	o47'
10/25	Akron	-10	16-24 L	u49
11/1	at Bowling Green	+2	28-3 W	u44
11/8				
11/12	at Central Mich	+2	19-38 L	o44'
11/19	Miami (OH)	+2	20-37 L	o39
11/28	Ohio			

## BYU (SU: 10-1, ATS: 8-3, O/U: 5-6)

### Georgia (SU: 10-1, ATS: 5-6, O/U: 4-6-1)

Date	Opponent	Line	Score	ATS/O/U
8/30	Marshall	-38'	45-7 L	o51'
9/6	Austin Peay	-46'	28-6 L	u56'
9/13	at Tennessee-ot	-3'	44-41 L	o50'
9/27	Alabama	-2'	21-24 L	u53'
10/4	Kentucky	-20'	35-14 W	p49
10/11	at Auburn	-40'	20-10 W	u46'
10/18	Ole Miss	-7'	43-35 W	o56'
10/25				
11/1	† Florida	-7	24-20 L	u50'
11/8	at Mississippi St	-9'	41-21 W	o56'
11/15	Texas	-4	35-10 W	u50'
11/22	Charlotte	-43	35-3 L	u53'
11/28	† Georgia Tech			

### Georgia Southern (SU: 5-6, ATS: 5-5-1, O/U: 7-4)

Date	Opponent	Line	Score	ATS/O/U
8/30	at Fresno State	+1	14-42 L	o49'
9/6	at USC	+29	20-59 L	o62
9/13	Jacksonville St	-3	41-34 W	o58'
9/20	Maine	-23	45-17 W	o57'
9/27	at James Madison	+15	10-35 L	u54'
10/4				
10/9	Southern Miss	+3	35-38 P	o60
10/18	Georgia State	-6'	41-24 W	o59
10/25	at Arkansas State-1		24-34 L	u59'
11/1				
11/6	at Appalachian St	+5	25-23 W	o51'
11/15	Coastal Carolina	-3	45-40 W	u59
11/22	Old Dominion	+10	10-45 L	u62
11/29	at Marshall			

### Georgia State (SU: 1-10, ATS: 1-10, O/U: 6-5)

Date	Opponent	Line	Score	ATS/O/U
8/30	at Ole Miss	+33'	7-63 L	o60'
9/6	Memphis	+14'	16-38 L	u57'
9/13	Murray State	-32	37-21 L	u63'
9/20	at Vanderbilt	+28	21-70 L	o53
9/27				
10/4	James Madison	+20	7-14 W	u52'
10/11	Appalachian St	+3	20-41 L	o55'
10/18	at Ga Southern	+6'	24-41 L	o59
10/25	South Alabama	+6	31-38 L	o54
11/1				
11/8	at Coa. Carolina	+7'	27-40 L	o56'
11/15	Marshall	+9'	18-30 L	u59
11/22	at Troy	+9	19-31 L	u51
11/29	at Old Dominion			

### Georgia Tech (SU: 9-2, ATS: 6-5, O/U: 7-4)

Date	Opponent	Line	Score	ATS/O/U
8/29	at Colorado	-3'	27-20 W	u50
9/6	Gardner-Webb	-37'	59-12 W	o60
9/13	Clemson	+3	24-21 W	u50'
9/20	Temple	-24'	45-24 L	o53
9/27	at Wake Forest-ot	-13	30-29 L	o53
10/4				
10/11	Virginia Tech	-14	35-20 W	u55'
10/18	at Duke	+3'	27-18 W	u61
10/25	Syracuse	-17	41-16 W	o52'
11/1	at NC State	-4'	36-48 L	o59
11/8				
11/15	at Boston College	-16'	36-34 L	o61
11/22	Pittsburgh	-2'	28-42 L	o60'
11/28	† Georgia			

### Hawaii (SU: 7-4, ATS: 7-4, O/U: 4-7)

Date	Opponent	Line	Score	ATS/O/U
8/23	Stanford	-2'	23-20 W	u50
8/30	at Arizona	+15'	6-40 L	u55
9/6	Sam Houston St	-7	37-20 W	o48'
9/13	Portland State	-36	23-3 L	u54'
9/20	Fresno State	+2'	21-23 W	u47'
9/27	at Air Force	+6'	44-35 W	o52
10/4				
10/11	Utah State	+1'	44-26 W	o56'
10/18	at Colorado State	+2'	31-19 W	u54
10/25				
11/1	at San Jose State	+2'	38-45 L	o55'
11/8	San Diego State	+6'	38-6 W	u47'
11/15				
11/21	at UNLV	+2'	10-38 L	u64'
11/29	Wyoming			

### Houston (SU: 8-3, ATS: 7-4, O/U: 7-4)

Date	Opponent	Line	Score	ATS/O/U
8/28	Steph. F. Austin	-24	27-0 W	u54'
9/6	at Rice	-13'	35-9 W	o38'
9/12	Colorado	-4	36-20 W	o45'
9/20				
9/27	at Oregon St-ot	-12	27-24 L	o48
10/4	Texas Tech	+13	11-35 L	u51'
10/11	at Oklahoma St	-14'	39-17 W	o47'
10/18	Arizona	+2	31-28 W	o47'
10/25	at Arizona State	+7'	24-16 W	u46'
11/1	West Virginia	-13'	35-45 L	o48'
11/7	at UCF	+1	30-27 W	u47'
11/15				
11/22	TCU	+1'	14-17 L	u55'
11/29	at Baylor			

### Illinois (SU: 7-4, ATS: 7-4, O/U: 5-6)

Date	Opponent	Line	Score	ATS/O/U
8/29	Western Illinois	-48'	52-3 W	u62'
9/6	at Duke	-2'	45-19 W	o49
9/13	Western Mich	-27'	38-0 W	u50'
9/20	at Indiana	+7	10-63 L	o51'
9/27	USC	+6'	34-32 W	o61'
10/4	at Purdue	-7	43-27 W	o54'
10/11	Ohio State	+14'	16-34 L	u51'
10/18				
10/25	at Washington	+3	25-42 L	o54'
11/1	Rutgers	-13	35-13 W	u62'
11/8				
11/15	Maryland	-17	24-6 W	u51'
11/22	at Wisconsin	-8'	10-27 L	u43
11/29	Northwestern			

### Indiana (SU: 11-0, ATS: 6-5, O/U: 6-4-1)

Date	Opponent	Line	Score	ATS/O/U
8/30	Old Dominion	-23'	27-14 L	u53'
9/6	Kennesaw State	-35'	56-9 W	o51'
9/12	Indiana State	-47	73-0 W	o60'
9/20	Illinois	-7	63-10 W	o51'
9/27	at Iowa	-9	20-15 L	u47'
10/4				
10/11	at Oregon	+7	30-20 W	u51
10/18	Michigan State	-26	38-13 L	u49
10/25	UCLA	-26'	56-6 W	o53
11/1	at Maryland	-21'	55-10 W	o50'
11/8	at Penn State	-13'	27-24 L	p51
11/15	Wisconsin	-28'	31-7 L	u44
11/22				
11/28	at Purdue			

### Iowa (SU: 7-4, ATS: 7-3-1, O/U: 4-7)

Date	Opponent	Line	Score	ATS/O/U
8/30	Albany	-39'	34-7 L	u48'
9/6	at Iowa State	+3	13-16 P	u43
9/13	Massachusetts	-35	47-7 W	o45
9/19	at Rutgers	-2	38-28 W	o46'
9/27	Indiana	+9	15-20 W	u47'
10/4				
10/11	at Wisconsin	-5'	37-0 W	u37'
10/18	Penn State	-3	25-24 L	o41'
10/25	Minnesota	-7	41-3 W	o39
11/1				
11/8	Oregon	+4'	16-18 W	u41'
11/15	at USC	+6'	21-26 W	u48'
11/22	Michigan State	-17	20-17 L	u42'
11/28	at Nebraska			

### Iowa State (SU: 7-4, ATS: 5-5-1, O/U: 4-7)

Date	Opponent	Line	Score	ATS/O/U
8/23	† Kansas State	+3	24-21 W	u51'
8/30	South Dakota	-16	55-7 W	o47'
9/6	Iowa	-3	16-13 P	u43
9/13	at Arkansas State	-21	24-16 L	u56
9/20				
9/27	Arizona	-4	39-14 W	o48
10/4	at Cincinnati	+1	30-38 L	o55'
10/11	at Colorado	-3	17-24 L	u52'
10/18				
10/25	BYU	-2'	27-41 L	o49
11/1	Arizona State	-7'	19-24 L	u48'
11/8	at TCU	+7'	20-17 W	u58
11/15				
11/22	Kansas	-3	38-14 W	u55'
11/29	at Oklahoma State			

### Jacksonville State (SU: 7-4, ATS: 5-6, O/U: 7-4)

Date	Opponent	Line	Score	ATS/O/U
8/28	at UCF	+20'	10-17 W	u53
9/6	Liberty	+6	34-24 W	o50'
9/13	at Ga Southern	+3	34-41 L	o58'
9/20	Murray State	-35'	45-10 L	u60'
9/27	at Southern Miss	+4	25-42 L	o55'
10/4				
10/9	at Sam Hou St	-7	29-27 L	o53'
10/15	Delaware	+3	38-25 W	o56'
10/25				
10/29	at Middle Tenn	-4	24-21 L	u54'
11/8	at UTEP	-1	30-27 W	o47
11/15	Kennesaw State	+3'	35-26 W	o56
11/22	at FIU	+2	21-27 L	u56'
11/29	Western Kentucky			

### James Madison (SU: 10-1, ATS: 7-4, O/U: 4-7)

Date	Opponent	Line	Score	ATS/O/U
8/30	Weber State	-26'	45-10 W	u55'
9/6	at Louisville	+15'	14-28 W	u56'
9/13				
9/20	at Liberty	-7'	31-13 W	u46'
9/27	Georgia Southern	-15	35-10 W	u54'
10/4	at Georgia State	-20	14-7 L	u52'
10/11	UL-Lafayette	-18'	24-14 L	u45
10/18	Old Dominion	-3	63-27 W	o47'
10/25				
10/28	at Texas State	-7	52-20 W	o55'
11/8	at Marshall	-13'	35-23 L	o53
11/15	Appalachian St	-21	58-10 W	o53
11/22	Washington State	-14'	24-20 L	u45
11/29	at Coastal Carolina			

### Kansas (SU: 5-6, ATS: 4-7, O/U: 5-6)

Date	Opponent	Line	Score	ATS/O/U
8/23	Fresno State	-14	31-7 W	u50
8/29	Wagner	-45'	46-7 L	u57
9/6	at Missouri	+5'	31-42 L	o51
9/13				
9/20	West Virginia	-12'	41-10 W	u54'
9/27	Cincinnati	-5'	34-37 L	u56'
10/4	at UCF	-4	27-20 W	u54
10/11	at Texas Tech	+13'	17-42 L	o58'
10/18				
10/25	Kansas State	-3'	17-42 L	o55'
11/1	Oklahoma State	-24'	38-21 L	o55
11/8	at Arizona	+6	20-24 W	u56
11/15				
11/22	at Iowa State	+3	14-38 L	u55'
11/28	Utah			

### Kansas State (SU: 5-6, ATS: 5-6, O/U: 7-4)

Date	Opponent	Line	Score	ATS/O/U
8/23	† Iowa State	-3	21-24 L	u51'
8/30	North Dakota	-27'	38-35 L	o55'
9/6	Army	-17	21-24 L	u48
9/12	at Arizona	-1'	17-23 L	u56'
9/20				
9/27	UCF	-6	34-20 W	o49
10/4	at Baylor	+4'	34-35 W	o60'
10/11	TCU	+3	41-28 W	o55
10/18				
10/25	at Kansas	+3'	42-17 W	o55'
11/1	Texas Tech	+7	20-43 L	o51'
11/8				
11/15	at Oklahoma St	-20	14-6 L	u50'
11/22	at Utah	+17'	47-51 W	o53
11/29	Colorado			

### Kennesaw State (SU: 8-3, ATS: 7-4, O/U: 5-6)

Date	Opponent	Line	Score	ATS/O/U
8/29	at Wake Forest	+18'	9-10 W	u51'
9/6	at Indiana	+35'	9-56 L	o51'
9/13	Merrimack	-17'	27-13 L	u44'
9/20	Arkansas State	+4'	28-21 W	u57
9/27	Middle Tennessee	-6'	24-16 W	u53'
10/4				
10/9	Louisiana Tech	+4'	35-7 W	u47
10/18				
10/21	at FIU	-3	45-26 W	o49
10/28	UTEP	-12	33-20 W	o52'
11/8	at New Mexico St	-11'	24-21 L	u52'
11/15	at Jacksonville St	-3'	26-35 L	o56
11/22	Missouri State	-6'	41-34 W	o54'
11/29	at Liberty			

### Kent State (SU: 4-7, ATS: 5-6, O/U: 5-6)

Date	Opponent	Line	Score	ATS/O/U
8/30	Merrimack	-5	21-17 L	u50'
9/6	at Texas Tech	+47'	14-62 L	o60
9/13	Buffalo	+24	28-31 W	o45
9/20	at Florida State	+45	10-66 L	o56
9/27				
10/4	at Oklahoma	+46'	0-44 L	u53'
10/11	Massachusetts	-1	42-6 W	u50'
10/18	at Toledo	+25'	10-45 L	o48
10/25	Bowling Green	+7'	24-21 W	u48
11/1				
11/5	at Ball State	+3	13-17 L	u49
11/11	at Akron-ot	+7	42-35 W	o49
11/19	Central Michigan	+7'	16-28 L	u50'
11/28	at Northern Illinois			

### Kentucky



### NC State (SU: 6-5, ATS: 5-6, O/U: 6-5)

Date	Opponent	Line	Score	ATS/O/U
8/28	East Carolina	-13'	24-17 L	u61'
9/6	Virginia	-3	35-31 W	o53'
9/11	at Wake Forest	-7	34-24 W	o52'
9/20	at Duke	+3	33-45 L	o56'
9/27	Virginia Tech	-10	21-23 L	u57'
10/4	Campbell	-42'	56-10 W	o61'
10/11	at Notre Dame	+24	7-36 L	u59'
10/18				
10/25	at Pittsburgh	+5	34-53 L	o53'
11/1	Georgia Tech	+4'	48-36 W	o59'
11/8				
11/15	at Miami (FL)	+16'	7-41 L	u54'
11/21	Florida State	+6'	21-11 W	u59'
11/29	North Carolina			

### Nebraska (SU: 7-4, ATS: 4-6-1, O/U: 8-3)

Date	Opponent	Line	Score	ATS/O/U
8/28	† Cincinnati	-6	20-17 L	u50'
9/6	Akron	-33'	68-0 W	o47'
9/11	Hou. Christian	-48'	59-7 W	o59'
9/20	Michigan	+1	27-30 L	o48'
9/27				
10/4	Michigan State	-12'	38-27 L	o48'
10/11	at Maryland	-7	34-31 L	o47'
10/17	at Minnesota	-6'	6-24 L	u47'
10/25	Northwestern	-7	28-21 P	o44'
11/1	USC	+4'	17-21 W	u59'
11/8	at UCLA	+1'	28-21 W	o46'
11/15				
11/22	at Penn State	+7	10-37 L	o45'
11/29	Iowa			

### Nevada (SU: 3-8, ATS: 5-5-1, O/U: 4-7)

Date	Opponent	Line	Score	ATS/O/U
8/30	at Penn State	+42'	11-46 W	u54'
9/6	Sacramento St	-7	20-17 L	u55'
9/11	Middle Tennessee	-9	13-14 L	u49'
9/20	at W. Kentucky	+7'	16-31 L	u54'
9/27				
10/4	at Fresno State	+11'	17-20 W	u45'
10/11	San Diego State	+6'	10-44 L	u42'
10/18	at New Mexico	+13'	22-24 W	u49'
10/24	Boise State	+21	3-24 P	u51'
11/1				
11/8	at Utah State	+10	14-51 L	o52'
11/15	San Jose State	+9'	55-10 W	o49'
11/22	at Wyoming	+6	13-7 W	u39'
11/29	UNLV			

### New Mexico (SU: 8-3, ATS: 6-5, O/U: 5-6)

Date	Opponent	Line	Score	ATS/O/U
8/30	at Michigan	+34'	17-34 W	o49'
9/6	Idaho State	-18'	32-22 L	u60'
9/12	at UCLA	+15'	35-10 W	u53'
9/20				
9/27	New Mexico St	-16'	38-20 W	o53'
10/3	at San Jose State	+1'	28-35 L	o58'
10/11	at Boise State	+14'	25-41 L	o58'
10/18	Nevada	-13'	24-22 L	u49'
10/25	Utah State	-3	33-14 W	u61'
11/1	at UNLV	+4	40-35 W	o61'
11/8				
11/15	Colorado State	-16	20-17 L	u54'
11/22	at Air Force	-3'	20-3 W	u53'
11/28	San Diego State			

### New Mexico State (SU: 4-7, ATS: 6-5, O/U: 4-7)

Date	Opponent	Line	Score	ATS/O/U
8/30	Bryant	-19'	19-3 L	u53'
9/6	Tulsa	+3	21-14 W	u52'
9/11	at Louisiana Tech	+10	14-49 L	o42'
9/20				
9/27	at New Mexico	+16'	20-38 L	o53'
10/2	Sam Houston St	+1'	37-10 W	u52'
10/11				
10/14	at Liberty	+11'	27-30 W	o48'
10/22	Missouri State-ot	+2'	17-24 L	u51'
11/1	at W. Kentucky	+7'	16-35 L	u53'
11/8	Kennesaw State	+11'	21-24 W	u52'
11/15	at Tennessee	+42'	9-42 W	u60'
11/22	at UTEP	+3'	34-31 W	o44'
11/29	Middle Tennessee			

### North Carolina (SU: 4-7, ATS: 5-6, O/U: 4-7)

Date	Opponent	Line	Score	ATS/O/U
9/1	TCU	+3'	14-48 L	o55'
9/6	at Charlotte	-14'	20-3 W	u49'
9/11	Richmond	-24'	41-6 W	u47'
9/20	at UCF	+7	9-34 L	u46'
9/27				
10/4	Clemson	+15'	10-38 L	o47'
10/11				
10/17	at California	+7'	18-21 W	u46'
10/25	Virginia-ot	+11'	16-17 W	u51'
10/31	at Syracuse	+1	27-10 W	u45'
11/8	Stanford	-7'	20-15 L	u41'
11/15	at Wake Forest	+3'	12-28 L	o37'
11/22	Duke	+6'	25-32 L	o50'
11/29	at NC State			

### North Texas (SU: 10-1, ATS: 9-2, O/U: 8-3)

Date	Opponent	Line	Score	ATS/O/U
8/30	Lamar	-27'	51-0 W	u63'
9/6	at West Mich-ot	-11'	33-30 L	o56'
9/11	Washington St	-7	59-10 W	o57'
9/20	at Army-ot	-2'	45-38 W	o50'
9/27	South Alabama	-13	36-22 W	u63'
10/4				
10/10	USF	-2'	36-63 L	o68'
10/18	UTSA	-4	55-17 W	o64'
10/24	at Charlotte	-25'	54-20 W	o60'
11/1	Navy	-6'	31-17 W	u68'
11/8				
11/15	at UAB	-17'	53-24 W	o69'
11/22	at Rice	-18	56-24 W	o57'
11/28	Temple			

### Northern Illinois (SU: 3-8, ATS: 3-8, O/U: 5-6)

Date	Opponent	Line	Score	ATS/O/U
8/30	Holy Cross	-13'	19-17 L	u49'
9/5	at Maryland	+16'	9-20 W	u45'
9/13				
9/20	at Mississippi St	+24	10-38 L	u48'
9/27	San Diego State	+2'	3-6 L	u41'
10/4	Miami (OH)	+4'	14-25 L	o38'
10/11	at Eastern Mich	-1'	10-16 L	u48'
10/18	at Ohio	+10'	21-48 L	u42'
10/25	Ball State	-6'	21-7 W	u40'
11/1				
11/5	at Toledo	+16	3-42 L	o42'
11/12	at Massachusetts	-9'	45-3 W	o43'
11/18	Western Michigan	+7	19-35 L	o39'
11/28	Kent State			

### Northwestern (SU: 6-5, ATS: 6-4-1, O/U: 6-5)

Date	Opponent	Line	Score	ATS/O/U
8/30	at Tulane	+6	3-23 L	u45'
9/5	Western Illinois	-31'	42-7 W	o48'
9/11	Oregon	+24'	14-34 W	u50'
9/20				
9/27	UCLA	-6	17-14 L	u46'
10/4	UL-Monroe	-13	42-7 W	o43'
10/11	at Penn State	+20'	22-21 W	u46'
10/18	Purdue	-3	19-0 W	u47'
10/25	at Nebraska	+7	21-28 P	o60'
11/1				
11/7	at USC	+14	17-38 L	o54'
11/15	Michigan	+10	22-24 W	o42'
11/22	Minnesota	-4	38-35 L	u41'
11/29	at Illinois			

### Notre Dame (SU: 9-2, ATS: 6-5, O/U: 6-5)

Date	Opponent	Line	Score	ATS/O/U
8/31	at Miami (FL)	-3	24-27 L	o50'
9/6				
9/13	Texas A&M	-6'	40-41 L	o49'
9/20	Purdue	-24'	56-30 W	o51'
9/27	at Arkansas	-5'	56-13 W	o63'
10/4	Boise State	-21'	28-7 L	u62'
10/11	NC State	-24	36-7 W	u59'
10/18	USC	-10'	34-24 L	u60'
10/25				
11/1	at Boston College	-31	25-10 L	u55'
11/8	Navy	-31	49-10 W	o54'
11/15	at Pittsburgh	-13	37-15 W	u51'
11/22	Syracuse	-36'	70-7 W	o55'
11/29	at Stanford			

### Ohio (SU: 7-4, ATS: 5-5-1, O/U: 5-6)

Date	Opponent	Line	Score	ATS/O/U
8/28	at Rutgers	+15'	31-34 W	o52'
9/6	West Virginia	+3'	17-10 W	u58'
9/13	at Ohio State	+28	9-37 P	u49'
9/20	Gardner-Webb	-30'	52-35 L	o56'
9/27	Bowling Green	-7'	35-20 W	o50'
10/4	at Ball State	-14	14-20 L	u52'
10/11				
10/18	Northern Illinois	-10'	48-21 W	o42'
10/25	at Eastern Mich	-12'	28-21 L	u60'
11/1				
11/11	Miami (OH)	-2'	24-20 W	u51'
11/14	at Western Mich	+1	13-17 L	u47'
11/18	Massachusetts	-34'	42-14 L	o53'
11/28	at Buffalo			

### Ohio State (SU: 11-0, ATS: 9-1-1, O/U: 4-7)

Date	Opponent	Line	Score	ATS/O/U
8/30	Texas	-1'	14-7 W	u46'
9/6	Grambling State	-54'	70-0 W	o62'
9/13	Ohio	-28	37-9 P	u49'
9/20				
9/27	at Washington	-9'	24-6 W	u53'
10/4	Minnesota	-23'	42-3 W	o42'
10/11	at Illinois	-14'	34-16 W	u51'
10/18	at Wisconsin	-25	34-0 W	u41'
10/25				
11/1	at Penn State	-17'	38-14 W	o45'
11/8	at Purdue	-29	34-10 L	u49'
11/15	UTCL	-33'	48-10 W	o46'
11/22	Rutgers	-29	42-9 W	u54'
11/29	at Michigan			

### Oklahoma (SU: 9-2, ATS: 7-4, O/U: 2-9)

Date	Opponent	Line	Score	ATS/O/U
8/30	Illinois State	-40'	35-3 L	u60'
9/6	Michigan	-4	24-13 W	u44'
9/13	at Temple	-24	42-3 W	u50'
9/20	Auburn	-6'	24-17 W	u47'
9/27				
10/4	Kent State	-46'	44-0 L	u53'
10/11	† Texas	+2'	6-23 L	u44'
10/18	at South Carolina-4	-26-7	W	u42'
10/25	Ole Miss	-4'	26-34 L	o52'
11/1	at Tennessee	+3	33-27 W	o55'
11/8				
11/15	at Alabama	+6'	23-21 W	u46'
11/22	Missouri	-4'	17-6 W	u42'
11/29	LSU			

### Oklahoma State (SU: 1-10, ATS: 4-7, O/U: 5-6)

Date	Opponent	Line	Score	ATS/O/U
8/28	UT-Martin	-26'	27-7 L	u56'
9/6	at Oregon	+28'	3-69 L	o55'
9/13				
9/20	Tulsa	-10	12-19 L	u54'
9/27	Baylor	+21	27-45 W	o58'
10/4	at Arizona	+21'	13-41 L	u57'
10/11	Houston	+14'	17-39 L	u47'
10/18	Cincinnati	+23'	17-49 L	o58'
10/25	at Texas Tech	+37'	0-42 L	u56'
11/1	at Kansas	+24'	21-38 W	o55'
11/8				
11/15	Kansas State	+20	6-14 W	u50'
11/22	at UCF	+13'	14-17 W	u47'
11/29	Iowa State			

### Old Dominion (SU: 8-3, ATS: 7-4, O/U: 5-6)

Date	Opponent	Line	Score	ATS/O/U
8/30	at Indiana	+23'	14-27 W	u53'
9/6	NC Central	-21'	54-6 W	o50'
9/13	at Virginia Tech	+5'	45-26 W	o51'
9/20				
9/27	Liberty	-14'	21-7 L	u53'
10/4	Coastal Carolina	-18'	47-7 W	o53'
10/11	at Marshall	-14'	24-48 L	o57'
10/18	at James Madison	+3	27-63 L	o47'
10/25	Appalachian St	-13'	24-21 L	u62'
11/1	at UL-Monroe	-17	31-6 W	u55'
11/8				
11/13	Troy	-9'	33-0 W	u53'
11/22	at Ga Southern	-10	45-10 W	u62'
11/29	Georgia State			

### Ole Miss (SU: 10-1, ATS: 6-4-1, O/U: 6-5)

Date	Opponent	Line	Score	ATS/O/U
8/30	Georgia State	-33'	63-7 W	o60'
9/6	at Kentucky	-8	30-23 L	o51'
9/13	Arkansas	-3'	41-35 W	o60'
9/20	Tulane	-11'	45-10 W	u61'
9/27	LSU	-2'	24-19 W	u58'
10/4				
10/11	Washington St	-33	24-21 L	u58'
10/18	at Georgia	+7	35-43 L	o56'
10/25	at Oklahoma	+4'	34-26 W	o52'
11/1	South Carolina	-12'	30-14 W	u55'
11/8	The Citadel	-51'	49-0 L	o63'
11/15	Florida	-10	34-24 P	o53'
11/22				
11/29	at Mississippi State			

### Oregon (SU: 10-1, ATS: 7-4, O/U: 6-5)

Date	Opponent	Line	Score	ATS/O/U
------	----------	------	-------	---------

**Texas (SU: 8-3, ATS: 3-8, O/U: 5-6)**

Date	Opponent	Line	Score	ATS/O/U
8/30	at Ohio State	+1'	7-14 L	u46'
9/6	San Jose State	-36'	38-7 L	u52'
9/13	UTEP	-39	27-10 L	u52
9/20	Sam Houston St	-39'	55-0 W	o51
9/27				
10/4	at Florida	-4'	21-29 L	u44'
10/11	at Oklahoma	-2'	23-6 W	u42'
10/18	at Kentucky-ot	-12	16-13 L	u45'
10/25	at Miss St-ot	-8	45-38 L	o49
11/1	Vanderbilt	-3'	34-31 L	o48
11/8				
11/15	at Georgia	+4	10-35 L	u50'
11/22	Arkansas	-9'	52-37 W	o58
11/29	Texas A&M			

**Texas A&M (SU: 11-0, ATS: 5-6, O/U: 8-3)**

Date	Opponent	Line	Score	ATS/O/U
8/30	UTSA	-23'	42-24 L	o58'
9/6	Utah State	-34'	44-22 L	o57'
9/13	at Notre Dame	+6'	41-40 W	u49'
9/20				
9/27	Auburn	-6'	16-10 L	u51'
10/4	Mississippi State	-17'	31-9 W	u57'
10/11	Florida	-7	34-17 W	o48
10/18	at Arkansas	-7'	45-42 L	o57'
10/25	at LSU	-1'	49-25 W	o50'
11/1				
11/8	at Missouri	-6'	38-17 W	o48
11/15	South Carolina	-17	31-30 L	o50
11/22	Samford	-54'	48-0 L	u59'
11/29	at Texas			

**Texas State (SU: 5-6, ATS: 3-8, O/U: 6-5)**

Date	Opponent	Line	Score	ATS/O/U
8/30	Eastern Michigan	-14	52-27 W	o56'
9/6	at UTSA	+4'	43-36 W	o64'
9/13	at Arizona State	+18'	15-34 L	u61
9/20	Nicholls State	-32'	35-3 L	u57
9/27				
10/4	at Arkansas State	-14	30-31 L	u64
10/11	Troy-ot	-7'	41-48 L	o53'
10/18	at Marshall-2ot	-2'	37-40 L	o65'
10/25				
10/28	James Madison	+7	20-52 L	o55'
11/8	at UL-Lafayette	-3'	39-42 L	o63'
11/15	at Southern Miss	+3	41-14 W	u65'
11/22	UL-Monroe	-20'	31-14 L	u60
11/29	South Alabama			

**Texas Tech (SU: 10-1, ATS: 10-1, O/U: 5-6)**

Date	Opponent	Line	Score	ATS/O/U
8/30	Ark Pine-Bluff	-54'	67-7 W	o62'
9/6	Kent State	-47'	62-14 W	o60
9/13	Oregon State	-24	45-14 W	u61
9/20	at Utah	+3	34-10 W	u58'
9/27				
10/4	at Houston	-13	35-11 W	u51'
10/11	Kansas	-13'	42-17 W	o58'
10/18	at Arizona State	-7'	22-26 L	u52'
10/25	Oklahoma State	-37'	42-0 W	u56'
11/1	at Arkansas State	-7	43-20 W	o51'
11/8	BYU	-13'	29-7 W	u50
11/15	UCF	-24'	48-9 W	o48
11/22				
11/29	at West Virginia			

**Toledo (SU: 7-4, ATS: 8-3, O/U: 6-5)**

Date	Opponent	Line	Score	ATS/O/U
8/30	at Kentucky	+10	16-24 W	u49
9/6	W. Kentucky	-8	45-21 W	o57
9/13	Morgan State	-33'	60-0 W	o54
9/20	at Western Mich	-13'	13-14 L	u48'
9/27	Akron	-21'	45-3 W	u49'
10/4				
10/11	at Bowling Green	-11	23-28 L	o45'
10/18	Kent State	-25'	45-10 W	o48'
10/25	at Washington St	-2	7-28 L	u45
11/1				
11/5	Northern Illinois	-16	42-3 W	o42
11/12	at Miami (OH)	-5'	24-3 W	u44'
11/22	Ball State	-28'	38-9 W	o45
11/29	at Central Michigan			

**Troy (SU: 7-4, ATS: 7-4, O/U: 5-6)**

Date	Opponent	Line	Score	ATS/O/U
8/30	Nicholls State	-20	38-21 L	o48'
9/6	at Clemson	+31	16-27 W	u51'
9/13	Memphis	+4	7-28 L	u50'
9/20	at Buffalo	+5'	21-17 W	u43'
9/27				
10/4	South Alabama-ot	+2	31-24 W	o47
10/11	at Texas State-ot	+7'	48-41 W	o53'
10/18	at UL-Monroe	-4'	37-14 W	o46'
10/25	UL-Lafayette	-7	35-23 W	o47'
11/1	Arkansas State	-7'	10-23 L	u52'
11/8				
11/13	at Old Dominion	+9'	0-33 L	u53
11/22	Georgia State	-9	31-19 W	u51
11/29	at Southern Miss			

**Tulane (SU: 9-2, ATS: 5-5, O/U: 4-7)**

Date	Opponent	Line	Score	ATS/O/U
8/30	Northwestern	-6	23-3 W	u45'
9/6	at South Alabama	-13'	33-31 L	o51
9/13	Duke	-1'	34-27 W	o52'
9/20	at Ole Miss	+11'	10-45 L	u61
9/27	at Tulsa	-14'	31-14 W	u52
10/4				
10/9	East Carolina	-7	26-19 P	u54
10/18	Army	-10	24-17 L	u44
10/25				
10/30	at UTSA	-6	26-48 L	o53'
11/7	at Memphis	+3	38-32 W	o53'
11/15	Florida Atlantic	-17	35-24 L	u61'
11/22	at Temple	-7'	37-13 W	u54
11/29	Charlotte			

**Tulsa (SU: 4-7, ATS: 6-5, O/U: 4-6-1)**

Date	Opponent	Line	Score	ATS/O/U
8/30	Abilene Christian	-5'	35-7 W	u59'
9/6	at New Mexico St	-3	14-21 L	u52'
9/13	Navy	+14	23-42 L	o52'
9/20	at Oklahoma St	+10	19-12 W	u54'
9/27	Tulane	+14'	14-31 L	u52
10/4	at Memphis	+20'	7-45 L	u55
10/11				
10/16	at East Carolina	+16'	27-41 W	o55'
10/25	Temple-ot	+5	37-38 W	o52
11/1				
11/8	at Florida Atlantic	+4	21-40 L	p61
11/15	Oregon State	PK	31-14 W	u50'
11/22	at Army	+10	26-25 W	o44
11/29	UAB			

**UAB (SU: 3-8, ATS: 3-8, O/U: 6-5)**

Date	Opponent	Line	Score	ATS/O/U
8/28	Alabama State	-21'	52-42 L	o53'
9/6	at Navy	+20'	24-38 W	o59
9/13	Akron	-12	31-28 L	o58
9/20	at Tennessee	+39	24-56 W	o69
9/27				
10/4	Army	+6'	13-31 L	u56
10/11	at Florida Atlantic	+5	33-55 L	u56'
10/18	Memphis	+23'	31-24 W	o69'
10/25				
11/1	at Connecticut	+10'	19-38 L	u61'
11/8	at Rice	+1	17-24 L	u51'
11/15	North Texas	+17'	24-53 L	o69
11/22	USF	+21'	18-48 L	u68'
11/29	at Tulsa			

**UCF (SU: 5-6, ATS: 4-7, O/U: 5-6)**

Date	Opponent	Line	Score	ATS/O/U
8/28	Jacksonville St	-20'	17-10 L	u53'
9/6	NCA&T	-37'	68-7 W	o51
9/13				
9/20	North Carolina	-7	34-9 W	u46'
9/27	at Kansas State	+6	20-34 L	u54
10/4	Kansas	+4	20-27 L	u49
10/11	at Cincinnati	+10	11-20 W	u56
10/18	West Virginia	-6'	45-13 W	o47
10/25				
11/1	at Baylor	+3	3-30 L	u58
11/7	Houston	-1	27-30 L	u47
11/15	at Texas Tech	+24'	9-48 L	u48
11/22	Oklahoma State	-13'	17-14 L	u47
11/29	at BYU			

**UCLA (SU: 3-8, ATS: 3-8, O/U: 6-5)**

Date	Opponent	Line	Score	ATS/O/U
8/30	Utah	+6'	10-43 L	o48'
9/6	at UNLV	-2'	23-30 L	u54
9/13	New Mexico	-15'	10-35 L	u53
9/20				
9/27	at Northwestern	+6	14-17 W	u46
10/4	Penn State	+24'	42-37 W	o48'
10/11	at Michigan St	+7	38-13 W	u51'
10/18	Maryland	-3'	20-17 L	u52'
10/25	at Indiana	+26'	6-56 L	o53
11/1				
11/8	Nebraska	-1'	21-28 L	o46
11/15	at Ohio State	+33'	10-48 L	o46'
11/22	Washington	+10'	14-48 L	o51
11/29	at USC			

**UL-Lafayette (SU: 5-6, ATS: 6-5, O/U: 7-4)**

Date	Opponent	Line	Score	ATS/O/U
8/30	Rice	-10	12-14 L	u48
9/6	McNeese State	-19	34-10 W	u50
9/13	at Missouri	+27	10-52 L	o47
9/20	at Eastern Mich	-2'	31-34 L	o51
9/27	Marshall-2ot	+2'	54-51 W	o48
10/4				
10/11	at James Madison	+18'	14-24 W	u45
10/18	Southern Miss	+5	10-22 L	u54'
10/25	at Troy	+7	23-35 L	u47
11/1	at South Alabama	+4	31-22 W	o52'
11/8	Texas State	+3'	42-39 W	o63
11/15				
11/20	at Arkansas State	+2'	34-30 W	o54
11/29	UL-Monroe			

**UL-Monroe (SU: 3-8, ATS: 3-8, O/U: 5-6)**

Date	Opponent	Line	Score	ATS/O/U
8/28	St. Francis (PA)	-30'	29-0 L	u47'
9/6	at Alabama	+34'	0-73 L	o49
9/13				
9/20	at UTEP	+6	31-25 W	u47
9/27	Arkansas State	-1'	28-16 W	o55'
10/4	at Northwestern	+13	7-42 L	o43
10/11	at Coa. Carolina	-2'	8-23 L	u46'
10/18	Troy	+4'	14-37 L	u46'
10/25	at Southern Miss	+14	21-49 L	o49'
11/1	Old Dominion	+17	6-31 L	u55'
11/8				
11/15	South Alabama	+4	14-26 L	u49'
11/22	at Texas State	+20'	14-31 W	u60
11/29	at UL-Lafayette			

**UNLV (SU: 9-2, ATS: 6-5, O/U: 5-6)**

Date	Opponent	Line	Score	ATS/O/U
8/23	Idaho State	-30'	38-31 L	o68
8/29	at Sam Hou. St	-9	38-21 W	o60
9/6	UCLA	+2'	30-23 W	u54
9/13				
9/20	at Miami (OH)	-1'	41-38 W	o49'
9/27				
10/4	at Wyoming	-4'	31-17 W	u51
10/11	Air Force	-6'	51-48 L	o65'
10/18	at Boise State	+13	31-56 L	o60
10/25				
11/1	New Mexico	-4	35-40 L	o61
11/8	at Colorado State	-4'	42-10 W	u61
11/15	Utah State-2ot	-4'	29-26 L	u68
11/21	Hawaii	-2'	38-10 W	u64'
11/29	at Nevada			

**USC (SU: 8-3, ATS: 5-6, O/U: 6-5)**

Date	Opponent	Line	Score	ATS/O/U
8/30	Missouri State	-36'	73-13 W	o60
9/6	Georgia Southern	-29	59-20 W	o62
9/13	at Purdue	-20'	33-17 L	u55'
9/20	Michigan State	-18'	45-31 L	o59'
9/27	at Illinois	-6'	32-34 L	o61
10/4				
10/11	Michigan	-3	31-13 W	u58'
10/18	at Notre Dame	+10'	24-34 W	u60'
10/25				
11/1	at Nebraska	-4'	21-17 L	u59'
11/7	Northwestern	-14	38-17 W	u54'
11/15	Iowa	-6'	26-21 L	u48'
11/22	at Oregon	+10'	27-42 L	o59'
11/29	UCLA			

**USF (SU: 8-3, ATS: 7-3-1, O/U: 7-4)**

Date	Opponent	Line	Score	ATS/O/U
8/28	Boise State	+4'	34-7 W	u61
9/6	at Florida	+18	18-16 W	u57'
9/13	at Miami (FL)	+17	12-49 L	o56'
9/20	South Carolina St	-35'	63-14 W	o58'
9/27				
10/3	Charlotte	-28	54-26 P	o54'
10/10	at North Texas	+2'	63-36 W	o68
10/18	Florida Atlantic	-20'	48-13 W	u72
10/25	at Memphis	-3'	31-34 L	o59
11/1				
11/6	UTSA	-14	55-23 W	o66'
11/15	at Navy	-8'	38-41 W	o62'
11/22	at UAB	-21'	48-18 W	u68'
11/29	Rice			



# BP SPORTS 2025 FOOTBALL PACKAGES

Item:	Regular:	Sale:
2025 CFB Preview (Win Totals, Futures)	\$50	\$10
2025 Newsletter (Includes Writeups)	\$100	\$20
2025 VIP Service (CFB/NFL Best Bets)	\$749	\$199

**Should I sign up for the Newsletter or VIP?**

	NL	VIP
Bet less than 10 games each week	✓	
\$100 or less per bet	✓	
Can only bet on Gamedays	✓	
One Update Sent Each Week	✓	
Bet more than 10 games each week		✓
\$250 or more per bet		✓
Can bet early in the week		✓
Daily updates via Email/Text		✓

## WEEKLY NEWSLETTER

- Emailed every Wednesday during the season
- Write-ups on every CFB/NFL game each week
- ATS Trends • Bad Beats • Misleading Finals
- Major Injuries • CFB Power Ratings on all teams
- ATS Schedule Logs for every CFB/NFL team
- Computer Projected Lines for Every CFB Game
- Will Include Score Projections but will NOT include Best Bets (VIP Only)

## 2025 CFB PREVIEW

- Emailed in Mid-July
- Team-By-Team 2025 Projections
- Brad Powers' Vegas Power Ratings
- Projected Lines on Every Game
- Season Win Total Projections & Best Bets
- Pointsread Value for Starting QB's
- Heisman, Conference & Title Future Bets
- Game of Year & Week 1 Best Bets

order online at [bradpowerssports.com](https://bradpowerssports.com)