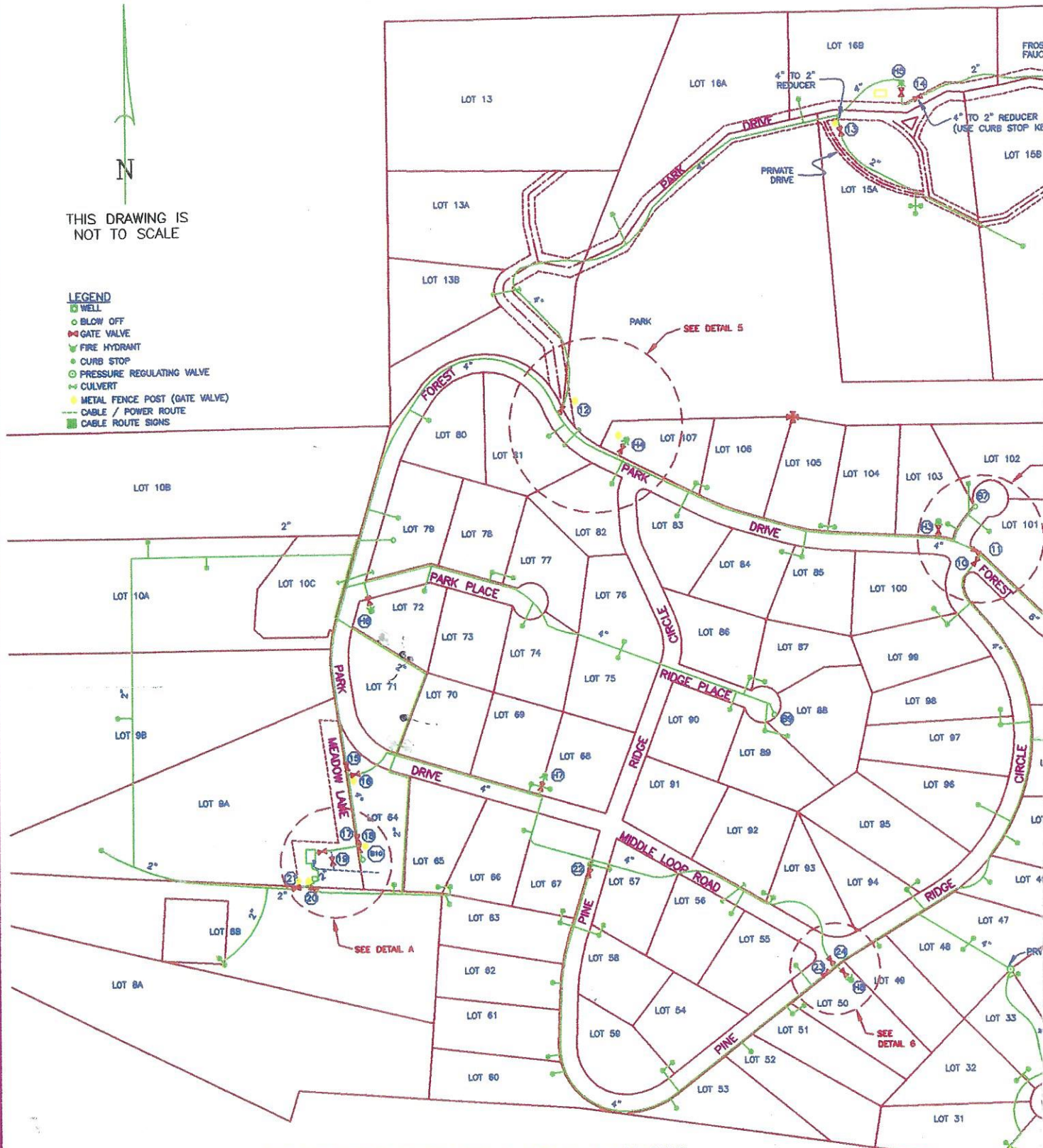


THIS DRAWING IS
NOT TO SCALE

LEGEND

- WELL
- BLOW OFF
- GATE VALVE
- FIRE HYDRANT
- CURB STOP
- PRESSURE REGULATING VALVE
- CULVERT
- METAL FENCE POST (GATE VALVE)
- CABLE / POWER ROUTE
- CABLE ROUTE SIGNS



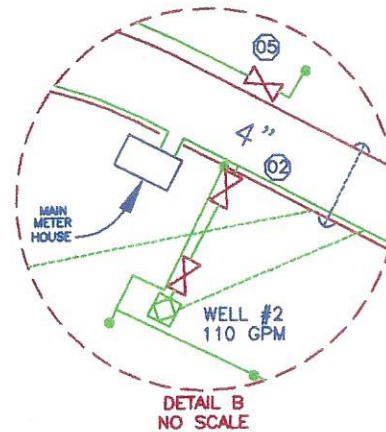
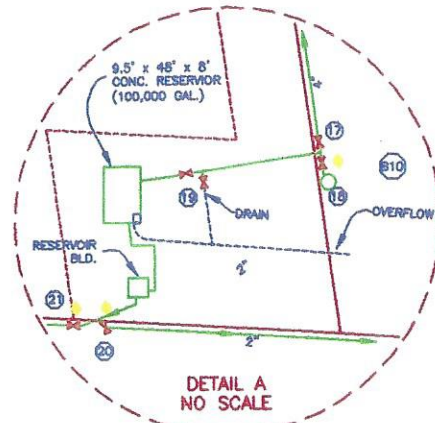
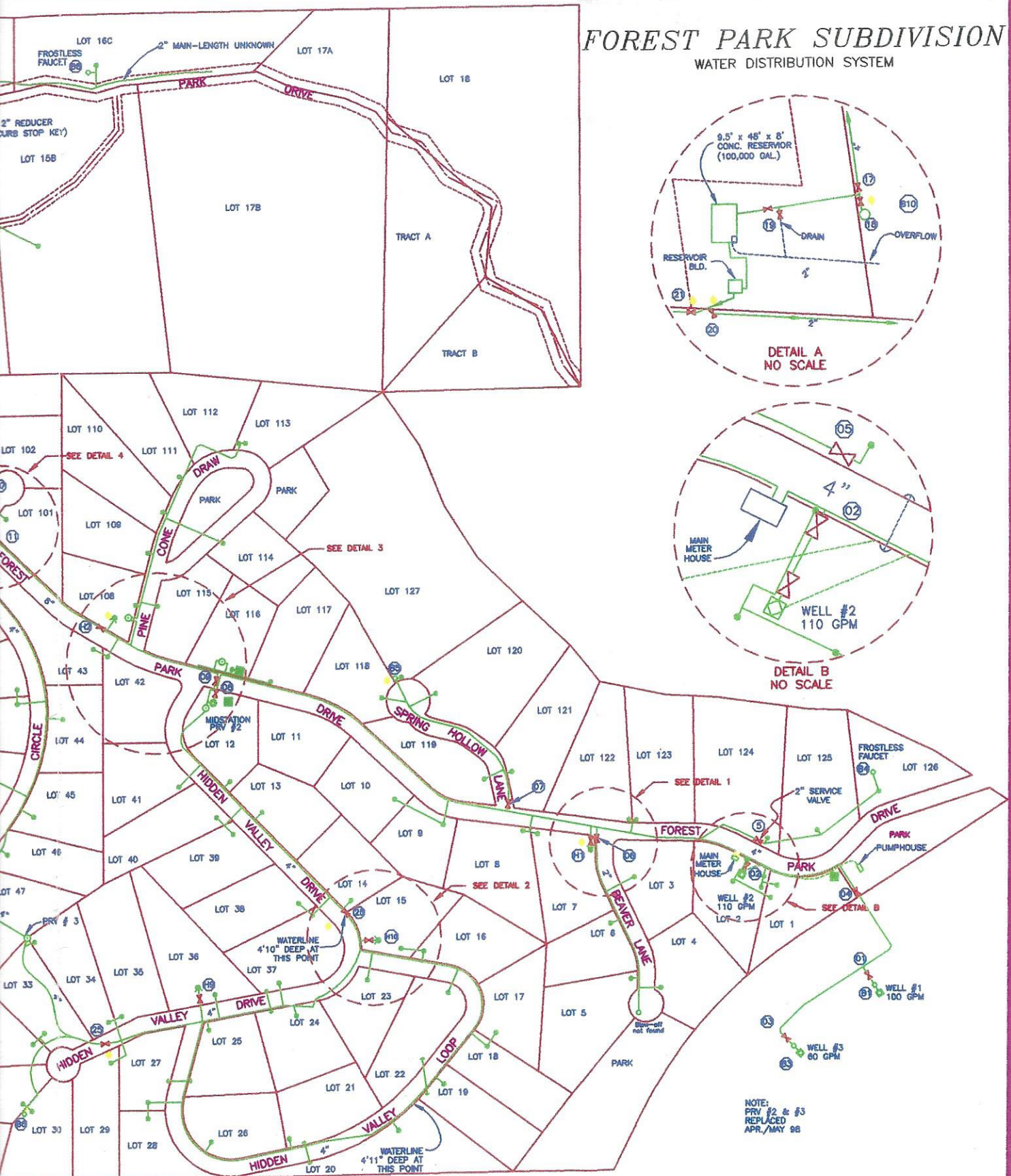
FIRE HYDRANT, BLOWOFF VALVE & GATE VALVE LOCATIONS

BLOW - OFF VALVE No.	LOCATION	FIRE HYDRANT No.	*LOCATION FROM FENCE POST	GATE VALVE No.	*LOCATION FROM FENCE POST	GATE VALVE No.	*LOCATION FROM FENCE POST	GATE VALVE No.	*LOCATION FROM FENCE POST
(1)	WELL #1	(1)	1.0'	(1)	WELL #1 - 1.0'	(1)	SEE DETAIL 4	(1)	SEE DETAIL A - 1.0'
(2)	WELL #2	(2)	30.0' (IN ROAD)	(2)	WELL #2 - 1.0'	(2)	SEE DETAIL 5	(2)	SEE DETAIL A - 10.4'
(3)	WELL #3	(3)	1.0'	(3)	WELL #3 - 1.0'	(3)	18.9'	(3)	SEE DETAIL 6
(4)	LOT 126	(4)	1.0'	(4)	2.0'	(4)	9.7'	(4)	SEE DETAIL 6
(5)	LOT 116	(5)	NOT FOUND	(5)	1.0'	(5)	1.5'	(5)	20.1'
(6)	LOT 30/31	(6)	1.0'	(6)	SEE DETAIL 1	(6)	1.0'	(6)	SEE DETAIL 2-30.0'
(7)	LOT 103	(7)	.5'	(7)	NOT FOUND	(7)	SEE DETAIL A - 1.0'		
(8)	LOT 16C	(8)	1.0'	(8)	SEE DETAIL 3	(8)	SEE DETAIL A - 1.5'		
(9)	LOT 88	(9)	1.5'	(9)	SEE DETAIL 3	(9)	SEE DETAIL A - 1.0'		
(10)	LOT 84	(10)	1.0'	(10)	SEE DETAIL 4	(10)	SEE DETAIL A - 1.0'		
									Note: Blow-off not found Lot 6

*NOTE: FENCE PERPE

FOREST PARK SUBDIVISION

WATER DISTRIBUTION SYSTEM



NOTE:
PRY #2 & #3
REPLACED
APR/MAY 98

FENCE POSTS WERE POSITIONED
PERPENDICULAR TO THE GATE VALVES.

PAGE 1 OF 4

MT. ASSOCIATES, INC. LARRY MARSHALL, LS 4000 HWY 18 WEST HYLENA, MT 59601 406-448-3918	
DATE OF SURVEY:	
DATE:	
JOB No. JOB	DWG No. DRAWING

1/4	SEC.	T	R
	28	27	
	33	34	9N
			3W

P.M.M.; JEFFERSON COUNTY