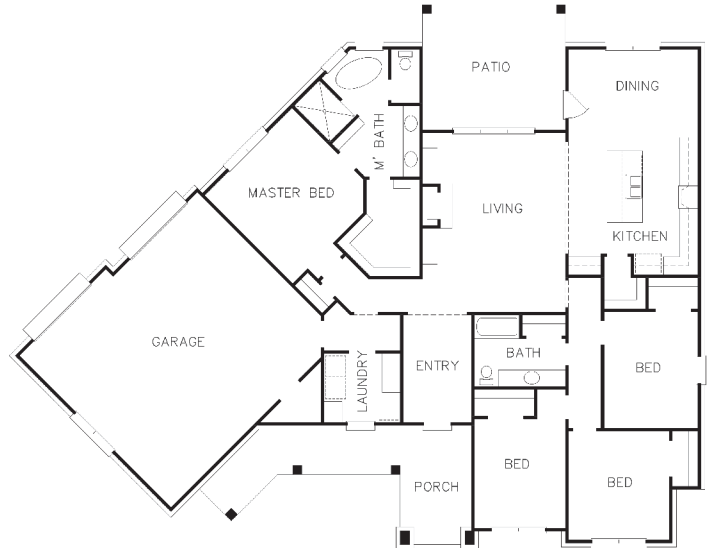




ABOUT THE HOME

- Nestled on a corner lot in a great, family friendly neighborhood in Hallsville ISD.
- Custom, open floor plan that includes four bedrooms and two bathrooms and an oversized two-car garage.
- Kitchen features beautiful custom shaker cabinets with Samsung appliances and a large spacious pantry.
- Living room features floor-to-ceiling woodwork surrounding gas fireplace.
- Guest bathroom has a large, oversized vanity as well as a linen closet that offers an abundance of storage.
- Master bath has his and her vanities and a free-standing tub and shower.
- Exterior façade has a board and batten/brick combination.
- Privacy fence and sprinkler system.



SUPPORTED BY

- Ace Glass
- AEP/SWEPCO
- BreMarie Designs
- Cadence Bank
- Cassity Jones Building Materials
- Centerpoint Energy
- Chief Exterminating
- Clint Tuel Roofing

- East Texas Brick
- JLBJ Septic Services
- Johnny Moughon Construction
- Johnnys Carpet One Flooring & Home
- Kelly-Moore Paints
- National Wholesale Supply
- R & L Insulating
- Unlimited Cabinets and Doors

BED	BATH	GARAGE	SQ. FT.	SCHOOLS
4	2	2	2,157	Hallsville ISD

MEET THE BUILDER

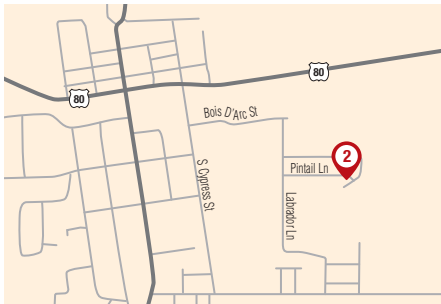


**ROBINSON CUSTOM HOMES**  
Henry & Lindsay Robinson

P: 903-235-3635  
C: 903-235-3635

henry@robinsoncustomhomesllc.com  
www.robinsoncustomhomesllc.com

DIRECTIONS



From East Loop 281 and Highway 80: Head East on Highway 80 for 6 miles. Turn right onto South Cypress Street for 0.1 miles. Turn left onto Bois D'Arc Street, continue for 0.3 miles. Turn right onto Labrador Lane for 0.2 miles. Turn left onto Pintail Lane. The home will be on the right.

TEALWOOD EDITION • 126 PINTAIL LANE, HALLSVILLE, TX