



Weekly Commodities Charts Newsletter

December 18, 2017

The Weekly Commodities Charts Newsletter provides Cornelius Luca's trade ideas, model signals, and absolute charts

**Wishing you
a profitable 2018!**

© 2017 Luca Global Markets, LLC. All rights reserved. This content is provided as general information only and does not constitute investment advice or a representation that any investment, security or other product is suitable for any person. This content reflects the opinions only of the author and cannot be interpreted as advice.

This content is the intellectual property of Cornelius Luca. Any copying, distribution or redistribution of this content is expressly prohibited without the prior written consent of Cornelius Luca.

Cornelius Luca shall not be liable for any errors in the content, or for any actions taken in reliance thereon.

Trade Ideas

- Energy: Long crude oil *while above* the 21-day exponential moving average
- Metals: Long gold *ONLY IF above* the 21-day exponential moving average
- Softs: Long corn *while above* the 5-day exponential moving average

Commodities Models – Daily & Weekly

	<i>Commodity</i>	<i>Daily Model</i>	since	Daily Bias (> or < 21-day EMA)	Daily Risk	<i>Weekly Model</i>	since	Weekly Bias (> or < 21-week EMA)	Weekly Risk
Energy	Crude Oil	L	14-Dec	slightly bullish	slightly bullish	L	18-Dec	bullish	slightly bullish
	Brent Crude	L	14-Dec	slightly bullish	slightly bullish	L	18-Dec	bullish	slightly bullish
	Natural Gas	L	18-Dec	slightly bearish	slightly bullish	L	18-Dec	slightly bearish	slightly bullish
Metals	Gold	L	13-Dec	slightly bearish	slightly bullish	L	18-Dec	slightly bearish	slightly bullish
	Silver	L	15-Dec	slightly bearish	slightly bullish	L	18-Dec	slightly bearish	slightly bullish
	Copper	L	8-Dec	slightly bullish	slightly bullish	L	14-Dec	slightly bullish	slightly bullish
Softs	Coffee	S	18-Dec	bearish	slightly bearish	S	4-Dec	slightly bearish	slightly bearish
	Soy Meal	S	14-Dec	slightly bearish	slightly bearish	S	11-Dec	slightly bullish	slightly bearish
	Wheat	L	13-Dec	slightly bullish	slightly bullish	L	14-Dec	slightly bearish	slightly bullish
	Corn	L	14-Dec	slightly bullish	slightly bullish	L	14-Dec	sideways	neutral

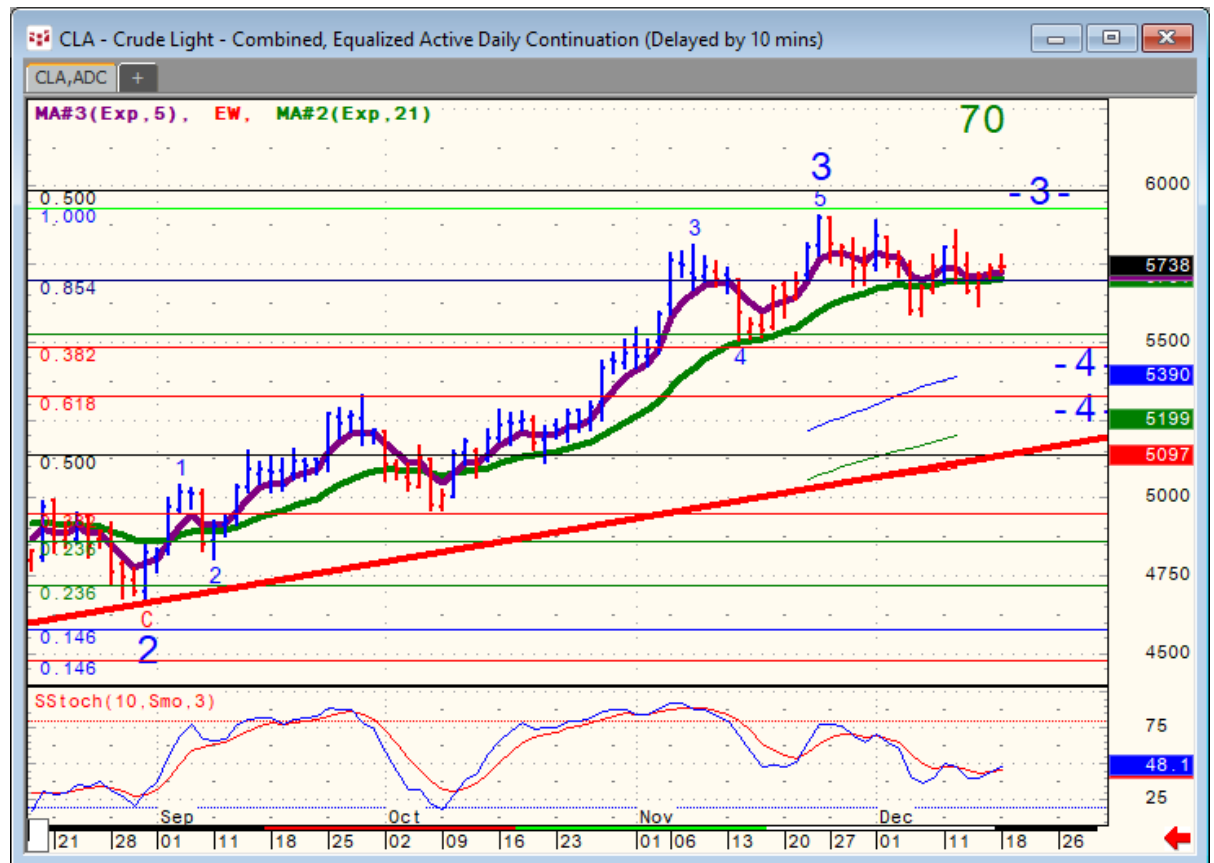
Source: Proprietary Luca Global Markets, LLC Model

Commodities Energy Trade Idea

Comment:

Long crude oil *while above the 21-day EMA*

- Crude oil is struggling in a short-term symmetrical triangle and around its 21-day EMA
- It's holding below the peak of 11/24
- New information is needed
- Initial resistance: 59.08
- Further resistance: 60.07
- Initial support: 56.10
- Further support: 55.25, 54.84 & 53.17
- Fast stochastics: neutral



CQG Inc. © 2017 All rights reserved worldwide. <http://www.cqg.com>

Mon Dec 18 2017 10:49:12, CQG 17.12.860

Commodities Metals Trade Idea

Comment:

Long gold ONLY IF above the 21-day EMA

- Gold recovered from a near 5-month low
- It remains below its 21-day EMA & the medium-term trendline rising since 12/2016
- A break above 21-day EMA is needed to trigger a more sustained short squeeze
- Initial resistance: 1,265
- Further resistance: 1,283, 1,299, 1,339 & 1,358
- Immediate support: 1,251
- Further support: 1,236 & 1,210
- Fast stochastics: bullish



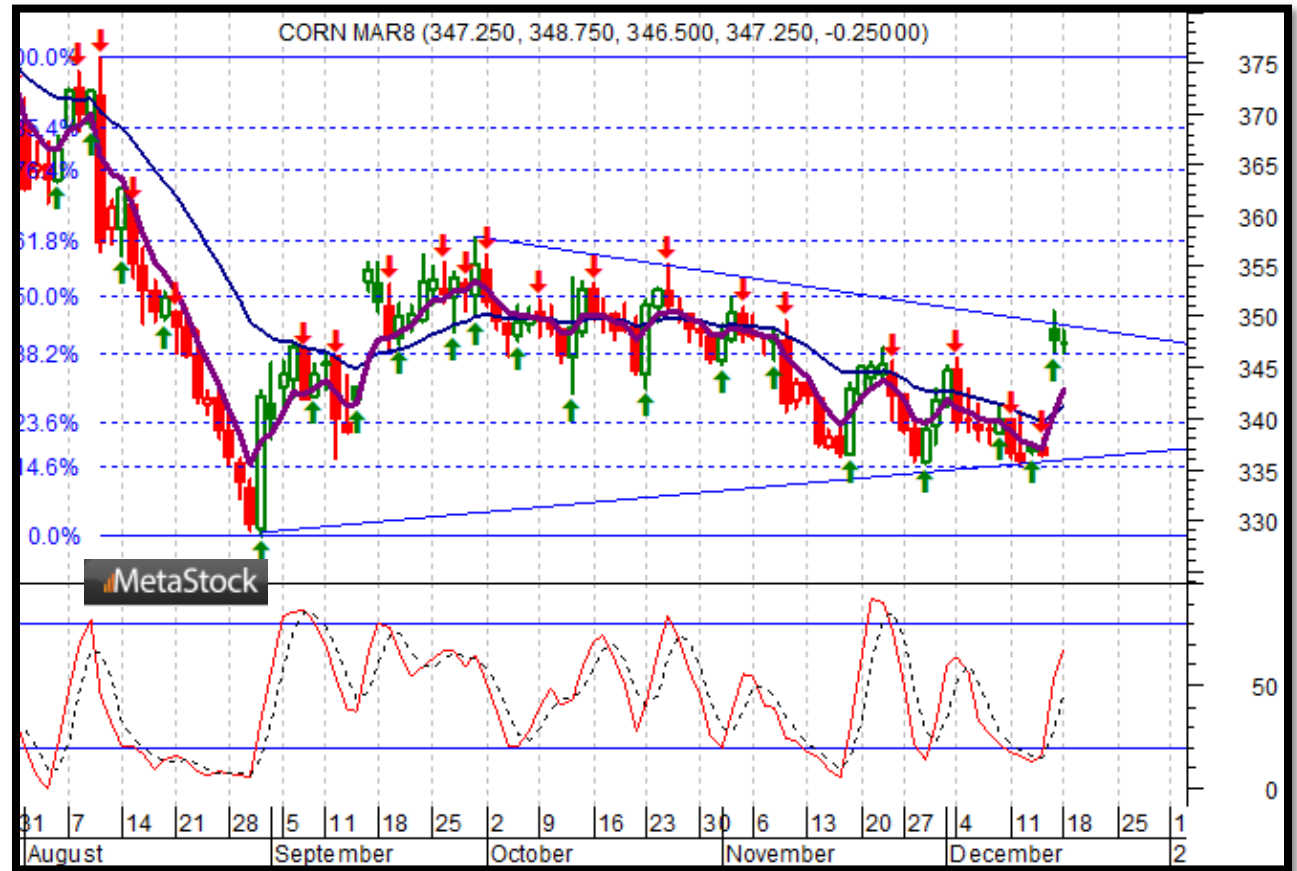
Soft Commodities Trade Idea

Comment:

Long corn while above the 5-day EMA

- Corn reversed higher and is testing the top of a symmetrical triangle
- It trades above both its 5-day & 21-day EMAs
- Initial resistance: 350.75
- Further resistance: 355.25 & 358
- Immediate support: 342.80
- Further support: 335.25

- Fast stochastics: bullish



How to Use the Heat Map

Bias: If the Candle > 21-period EMA = bullish
 If the Candle < 21-period EMA = bearish
 If the Candle around 21-period EMA = sideways

Long or Short	Commodities	Since when		Risk: Bullish or Bearish Candle as of Monday am EST					
		Daily Model	since	Daily Bias (> or < 21-day EMA)	Daily Risk	Weekly Model	since	Weekly Bias (> or < 21-week EMA)	Weekly Risk
Energy	Crude (CLc1)	S	27-Apr	bullish	slightly bullish	L	23-Mar	slightly bearish	slightly bullish
	Brent (LCOc1)	L	21-Apr	slightly bullish	slightly bullish	L	6-Apr	slightly bearish	slightly bullish
	Natural gas (NGc1)	S	23-Apr	bearish	bearish	S	20-Apr	bearish	slightly bearish
	Palm oil (FCPOc1)	L	24-Apr	sideways	neutral	S	20-Apr	slightly bearish	slightly bearish
Metals	Gold (GCc1)	S	24-Apr	bearish	bearish	S	20-Mar	slightly bearish	slightly bearish
	Silver (SIc1)	S	22-Apr	bearish	bearish	S	24-Apr	bearish	bearish
	Platinum (PLc1)	S	20-Apr	bearish	bearish	S	20-Mar	bearish	slightly bullish
	Copper (HGc1)	L	24-Apr	slightly bearish	slightly bullish	S	24-Apr	slightly bearish	slightly bearish
Softs	Coffee (KCN5)	L	24-Apr	sideways	neutral	L	24-Apr	slightly bullish	slightly bullish
	Cocoa (LCCN5)	L	23-Apr	bullish	bullish	L	13-Apr	bullish	bullish
	Soy meal (SMN5)	S	24-Apr	bearish	slightly bearish	S	24-Apr	bearish	slightly bearish
	Wheat (WN5)	S	24-Apr	bearish	slightly bearish	S	24-Apr	bearish	bearish
	Corn (CN5)	S	20-Apr	bearish	bearish	S	6-Apr	bearish	bearish

Source: Proprietary Luca Global Markets, LLC Model

L = long
 S = short