

Weekly Commodities Charts Newsletter

December 4, 2017

The Weekly Commodities Charts Newsletter provides Cornelius Luca's trade ideas, model signals, and absolute charts

© 2017 Luca Global Markets, LLC. All rights reserved. This content is provided as general information only and does not constitute investment advice or a representation that any investment, security or other product is suitable for any person. This content reflects the opinions only of the author and cannot be interpreted as advice.

This content is the intellectual property of Cornelius Luca. Any copying, distribution or redistribution of this content is expressly prohibited without the prior written consent of Cornelius Luca.

Cornelius Luca shall not be liable for any errors in the content, or for any actions taken in reliance thereon.

Trade Ideas

- Energy: Short crude oil *if below* the 21-day exponential moving average
- Metals: Short gold *while below* the 21-day exponential moving average
- Softs: Long soy meal *while above* the 5-day exponential moving average

Commodities Models – Daily & Weekly

	<i>Commodity</i>	<i>Daily Model</i>	since	Daily Bias (> or < 21-day EMA)	Daily Risk	<i>Weekly Model</i>	since	Weekly Bias (> or < 21-week EMA)	Weekly Risk
Energy	Crude Oil	S	4-Dec	bullish	slightly bearish	S	4-Dec	bullish	slightly bearish
	Brent Crude	S	4-Dec	bullish	slightly bearish	S	4-Dec	bullish	slightly bearish
	Natural Gas	S	4-Dec	slightly bearish	slightly bearish	S	4-Dec	sideways	neutral
Metals	Gold	S	4-Dec	slightly bearish	slightly bearish	S	29-Nov	slightly bearish	slightly bearish
	Silver	S	27-Nov	bearish	slightly bearish	S	23-Nov	slightly bearish	slightly bearish
	Copper	L	1-Dec	sideways	neutral	S	1-Dec	slightly bullish	slightly bearish
Softs	Coffee	S	4-Dec	sideways	neutral	S	4-Dec	slightly bearish	slightly bullish
	Soy Meal	L	1-Dec	bullish	bullish	L	10-Nov	slightly bullish	slightly bullish
	Wheat	S	4-Dec	slightly bearish	slightly bearish	S	13-Nov	slightly bearish	slightly bearish
	Corn	S	4-Dec	slightly bearish	slightly bearish	S	4-Dec	slightly bearish	slightly bearish

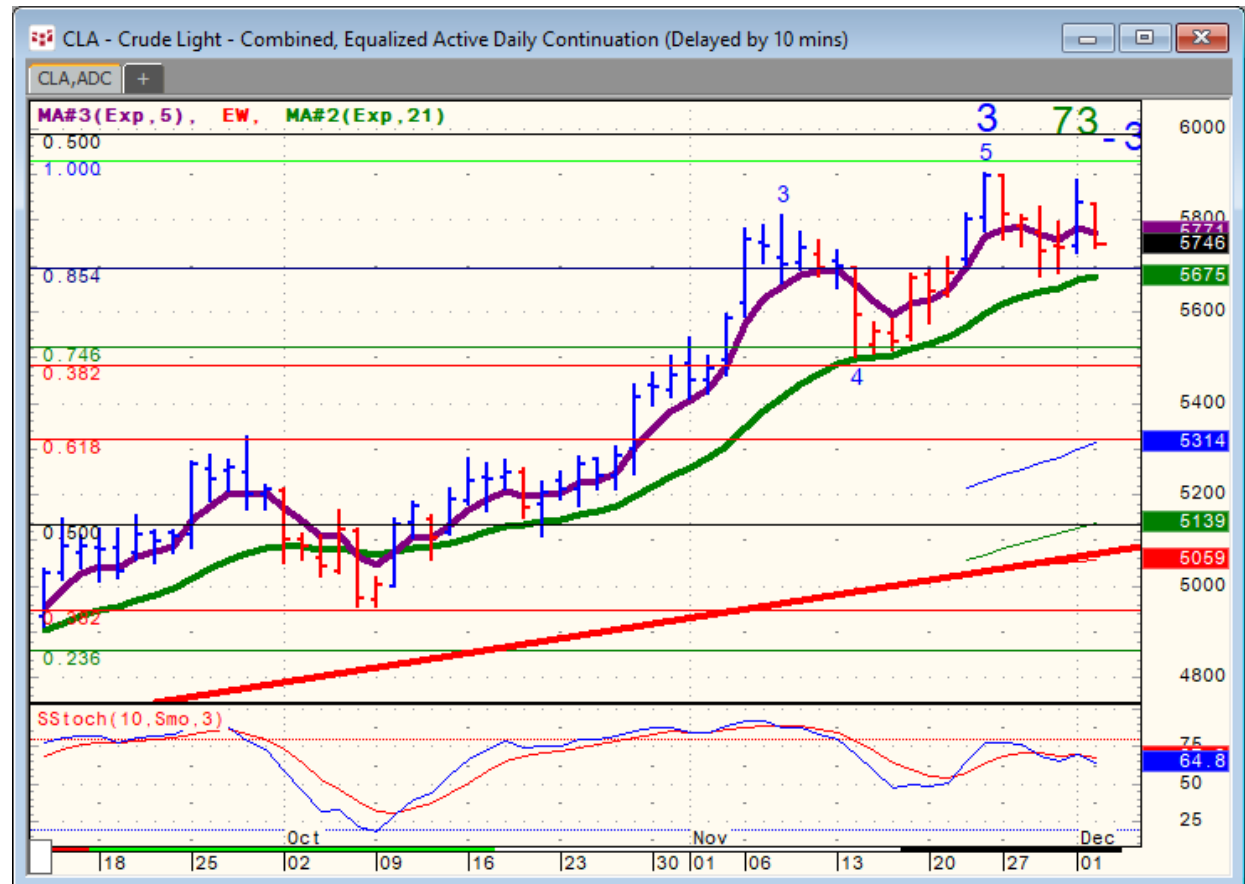
Source: Proprietary Luca Global Markets, LLC Model

Commodities Energy Trade Idea

Comment:

Short crude oil if below the 21-day EMA

- Crude oil is still trying to correct lower after failing to match the peak of 11/24
- It has been consolidating around the 5-day EMA but still holding above its 21-day EMA
- Only a break below this average should trigger long liquidation
- Initial resistance: 59.05
- Further resistance: 60.07
- Initial support: 56.75
- Further support: 55.25, 54.84 & 53.17
- Fast stochastics: slightly bearish



CQG Inc. © 2017 All rights reserved worldwide. <http://www.cqg.com>

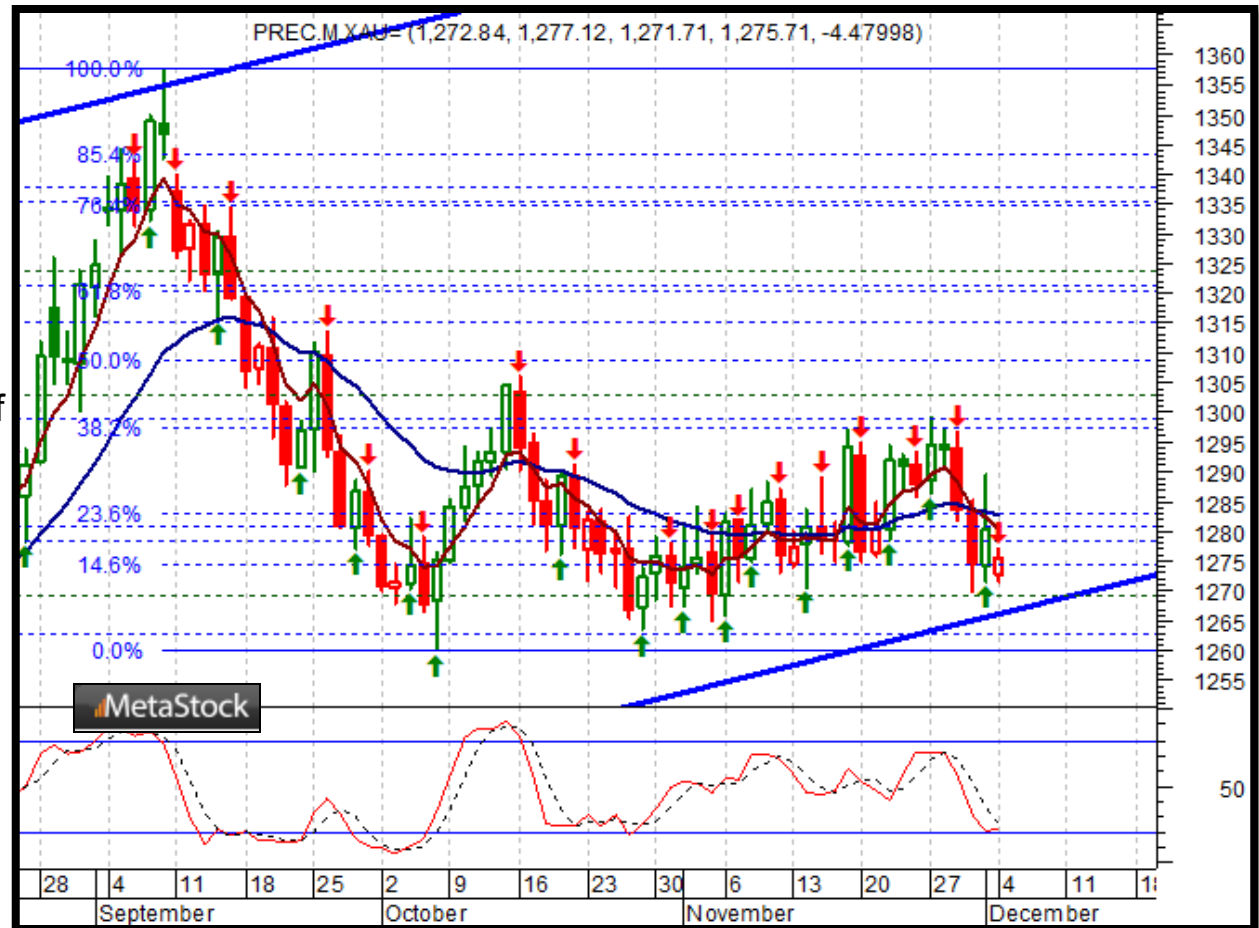
Mon Dec 04 2017 14:30:34, CQG 17.12.860

Commodities Metals Trade Idea

Comment:

Short gold *while* below the 21-day EMA

- Gold ended its slow and jittery upmove and sank below its 21-day EMA on 11/30
- It's now testing the bottom of a medium-term rising channel
- Immediate support: 1,270
- Further support: 1,215
- Initial resistance: 1,283
- Further resistance: 1,299, 1,339 & 1,358
- Fast stochastics: bearish



Soft Commodities Trade Idea

Comment:

Long soy meal while above the 5-day EMA

- Soy meal trades accelerated its gains above the top of a symmetrical triangle to a 5-month high
- It trades above its 5-day EMA & is overbought
- Initial resistance: 338.80
- Further resistance: 350.30 & 353.70
- Immediate support: 328.60
- Further support: 321.20, 317.30 & 309.60
- Fast stochastics: bullish



How to Use the Heat Map

Bias: If the Candle > 21-period EMA = bullish
 If the Candle < 21-period EMA = bearish
 If the Candle around 21-period EMA = sideways

Long or Short	Commodities	Since when		Risk: Bullish or Bearish Candle as of Monday am EST					
		Daily Model	since	Daily Bias (> or < 21-day EMA)	Daily Risk	Weekly Model	since	Weekly Bias (> or < 21-week EMA)	Weekly Risk
Energy	Crude (CLc1)	S	27-Apr	bullish	slightly bullish	L	23-Mar	slightly bearish	slightly bullish
	Brent (LCOc1)	L	21-Apr	slightly bullish	slightly bullish	L	6-Apr	slightly bearish	slightly bullish
	Natural gas (NGc1)	S	23-Apr	bearish	bearish	S	20-Apr	bearish	slightly bearish
	Palm oil (FCPOc1)	L	24-Apr	sideways	neutral	S	20-Apr	slightly bearish	slightly bearish
Metals	Gold (GCc1)	S	24-Apr	bearish	bearish	S	20-Mar	slightly bearish	slightly bearish
	Silver (SIc1)	S	22-Apr	bearish	bearish	S	24-Apr	bearish	bearish
	Platinum (PLc1)	S	20-Apr	bearish	bearish	S	20-Mar	bearish	slightly bullish
	Copper (HGc1)	L	24-Apr	slightly bearish	slightly bullish	S	24-Apr	slightly bearish	slightly bearish
Softs	Coffee (KCN5)	L	24-Apr	sideways	neutral	L	24-Apr	slightly bullish	slightly bullish
	Cocoa (LCCN5)	L	23-Apr	bullish	bullish	L	13-Apr	bullish	bullish
	Soy meal (SMN5)	S	24-Apr	bearish	slightly bearish	S	24-Apr	bearish	slightly bearish
	Wheat (WN5)	S	24-Apr	bearish	slightly bearish	S	24-Apr	bearish	bearish
	Corn (CN5)	S	20-Apr	bearish	bearish	S	6-Apr	bearish	bearish

Source: Proprietary Luca Global Markets, LLC Model

L = long
 S = short