

TOWN OF
MARBLE

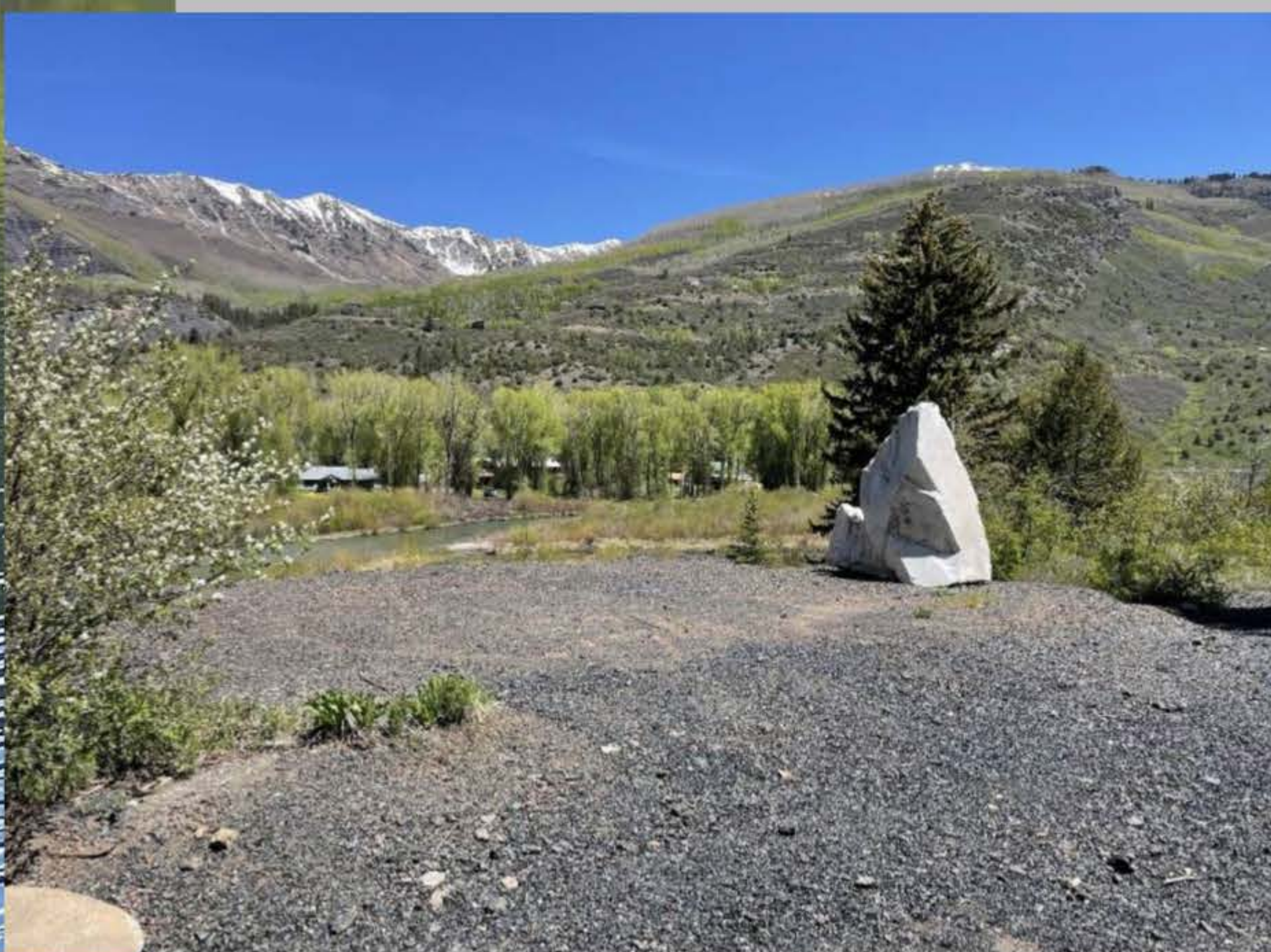
Marble Wetlands Clean Up

An incredible effort to clean up a slag pile left by the Hoffman Smelter Company is in the preliminary stages. If you haven't heard of this company, it's no wonder, the refinery shut in 1901.

Among a few old mining structures, a large mound of stony matter containing unhealthy amounts of arsenic and lead is what remains of the operation. The site is a part of a 54-acre landholding now known as the Marble Wetland Preserve, once named the Hepola Wetlands, donated to the Aspen Valley Land Trust by Pamela Hepola to be restored, protected, and preserved in perpetuity. The wetland spans both sides of the Crystal River from Carbonate Creek to Yule Creek. The slag pile sits on the west end with access from county road 3. The Crystal River flows less than 100 feet from the toe of the slag a pile with a difference of 20 vertical feet in elevation to its peak.



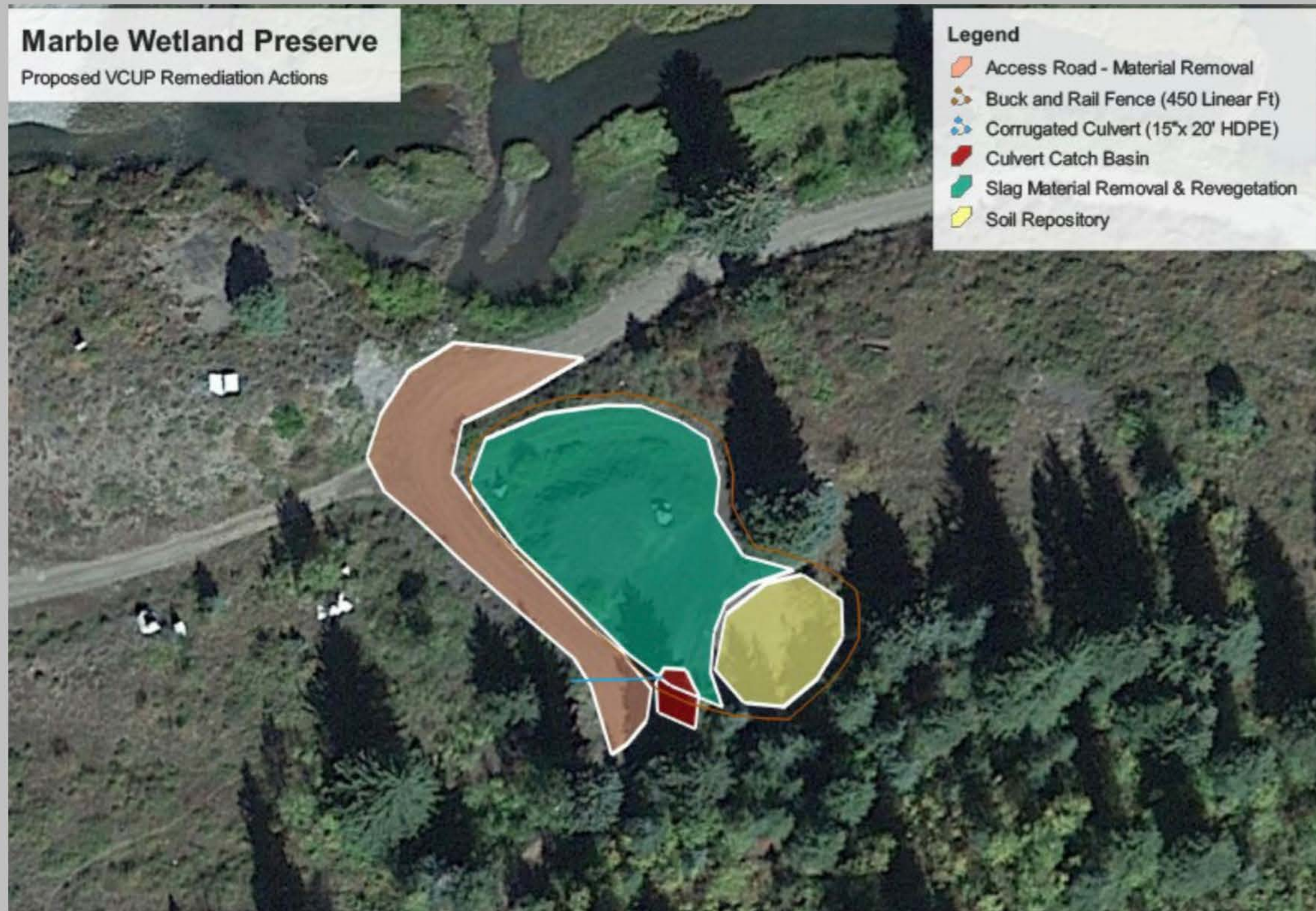
Satellite boundaries map of wetlands. Smelter site in yellow



Above is a photo from the pile looking to the Crystal River

The pile is harmless to the environment, people or wildlife unless disturbed. To expedite the clean up, AVLTL donated the site to the Trust for Land Restoration, with intent to manage on-site remediation efforts and thereafter, donate the site to a municipality, state agency, or local conservation organization to allow recreational access and maintain preservation. Trout Unlimited, an organization dedicated to conservation of cold water resources, has prepared the Voluntary Cleanup Program Application on behalf of TLR and are managing the project. In this application, TU has presented site history, environmental assessments, proposed remediation for future land use, remediation design, and the restrictions and long term maintenance and monitoring of the soil repository where the slag will be stored.

Scope of the clean up



The scope of the project consists of creating a repository uphill from the pile, away from the service road, runoff routes, and potential recreation areas. The approximate dimensions are 75' x 36' x 2' deep or 85 cubic yards. The materials will be spread in this cavity then covered with a foot of locally sourced soils, slash, native seed, and wood straw to encourage vegetative growth. A culvert will be placed on the downstream up hill point of the repository to manage stormwater and snowmelt and direct it under the road to the west into a densely vegetated area. There is potential to cap the pile site, once debris is removed, with native vegetation as well as add road base to the road around the pile. The installation of boulders and buck and rail fencing will safeguard the reclaimed areas to prevent vehicular damage. Ultimately, interpretive signage will inform users of historical significance, education, and to keep off remediation efforts.

This large endeavor is being fully funded by the State of Colorado. With the approval from the Town of Marble, Trout Unlimited is sending out bids to contractors this month in hopes to have this project complete before winter.

Kids of the Crystal

A peek at some of the fun adventures from the summer program at the Marble Charter School!



Including visits to the Aspen Historical Society, Aspen Art Museum, and the Roaring Fork Conservancy.



As well as lots of hiking, trips to the pool, and the Glenwood Recreation Center!!

School is just around the corner. Break for the bus!



Come attend the Town Meeting the first Thursday of each month at Fellowship Hall of the Marble Community Church. 7pm



COMMUNITY
MARBLE
PROJECT
EXTRAVAGANZA!

Sat, Aug 20, 2022 8:30 AM Sun, Aug 21, 2022 4:30 PM

Come for the scenery, stay for the barbecue! Enjoy a weekend campout in Marble full of stewardship projects, learning opportunities, and plenty of time to just hangout.

Marble Fest

August 6 & 7 2022

SATURDAY	SUNDAY
12:00-1:00 WHISKEY STOMP	12:00-12:30 AMELIA & PENELOPE
1:30-2:30 HOP PICKERS	1:00-2:00 DAVID WALKER GOOD BAND
3:00-4:00 WOODEN ROCK	2:30-3:30 CUTTIN' GRASS
4:30-5:30 SHADY OAKS	4:00-5:00 STORM PASS
6:00-7:00 ROOTBEER	5:30-6:30 ROOTBEER
RICHIE & THE REVILLE	RICHIE & THE REVILLE
7:30-10:00 DRAGONDEER	7:00-8:00 THE VELVETEERS

FOOD VILLAGE

, Mama Perogies, Ganjin Ramen, Dustino's Pizza, Redstone Ice Cream, Aspen Mini Donuts, Rolling Fork

KIDS CARNIVAL, LOCAL ARTISTS & CRAFT VENDORS!

www.marblefestco.com



Due to the increase of OHV use on the Lead King Loop, the Town of Marble has limited the truck with trailer parking to the Quarry Bridge roundabout.



During the summer season, there are only 10 truck with trailer spaces available through September. This is the ONLY truck with trailer designated parking allowed in the Town of Marble. Thank you and stay safe!