



STATEMENT MAKERS

{INCLUDING HELPFUL GUIDES ON HOW TO WEAR YOUR ACCESSORIES FOR MAXIMUM EFFECT}

COLOR

J791 AQUA STONE NECKLACE

|Collar| Eight oval shaped bold alternating aqua stones suspended on a 22"L silver chain necklace with 2"L extender and lobster clasp closure. **\$19.50**



J791



J245

J245 CRYSTAL CROSS STRETCH

BRACELET |Brazalete| Antique turquoise bracelet inlaid with a crystal cross on three sides. 2-½" diameter. One size fits most. **\$24.50**

J246 AZTEC CROSS NECKLACE |Collar| Gold filigree cross pendant accented by two turquoise beads hang from a 18"L gold chain. Includes 2"L extender and lobster clasp closure. **\$19.50**

J247 LITTLE CHARM NECKLACE

|Collar| A turquoise tassel, bead and a gold charm form a danty display. 15-½"L with a 2-½"L extender & lobster clasp closure. **\$19.50**

J244 THREE BEADED STRETCH

BRACELETS |Brazalete| Brown, natural, silver and turquoise beads make up this fabulous set of three stretch bracelets. 7" Diameter. One size fits most. **\$19.50**

J254 TURQUOISE EARRINGS

|Pendientes| Turquoise beads encased in gold hang softly on hook drop earrings. 1-½"L drop. **\$19.50**

J248 DRAWSTRING TASSEL BRACELET

|Brazalete| Gold & turquoise beads on a grey drawstring bracelet with tasseled ends. 5-7" Diameter. One size fits most. **\$19.50**



J246

J247



J244



J254



J248

**J942 GOLDEN CIRCLE
PENDENT NECKLACE**

| Collar | Sparkling circle
pendent is 1-³/₇" diameter
and hangs from three
18-¹/₂"L delicate gold tone
chains with a lobster
clasp & 3"L extender.

\$19.50

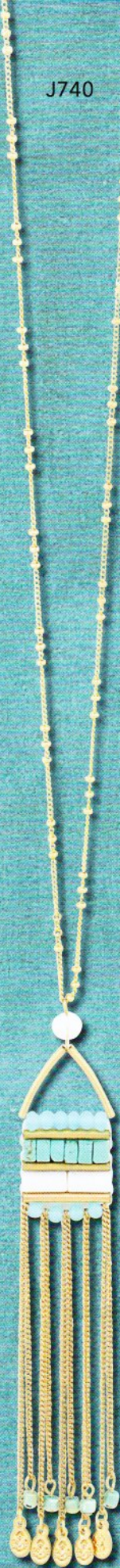


J740

J251

J252

J253



J250

J250 TURQUOISE STONE TASSEL

EARRINGS | Pendientes | Turquoise
stone and ivory handcrafted drop
earrings with chain tassels. 3"L. drop.

\$19.50

J740 TURQUOISE STONE TASSEL

NECKLACE | Collar | Turquoise stone
& ivory pendant handcrafted together
featuring chain tassels and hangs from
a elegant long gold beaded chain. 27"L
with 3"L extender and lobster clasp
closure. **\$29.50**

J251 BLUE-JADE TASSEL NECKLACE

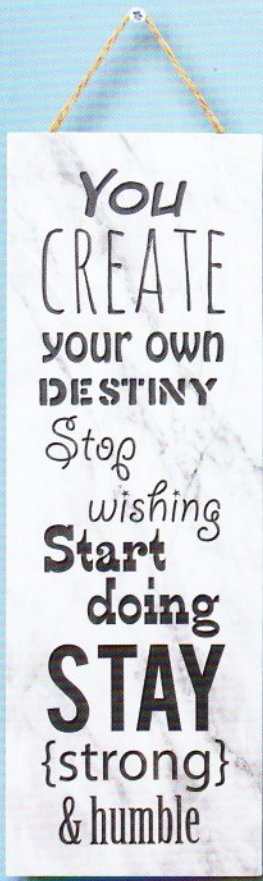
| Collar | Three gold and blue-jade chains
form this necklace & tassel pendant connected
by pave beads and gold accents. 28"L with
3"L tassels and lobster clasp closure. **\$24.50**

J252 HI-LO GOLD NECKLACE | Collar |

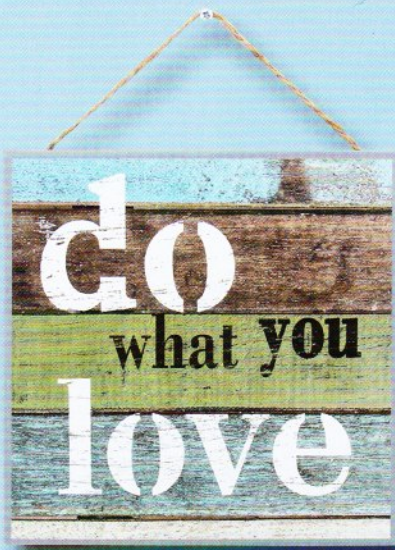
A circle and bar pendant rest on two different
levels of a delicate gold chain. 19"L & 23"L with
a 3"L extender & lobster clasp closure **\$19.50**

J253 TIERS OF TURQUOISE NECKLACE

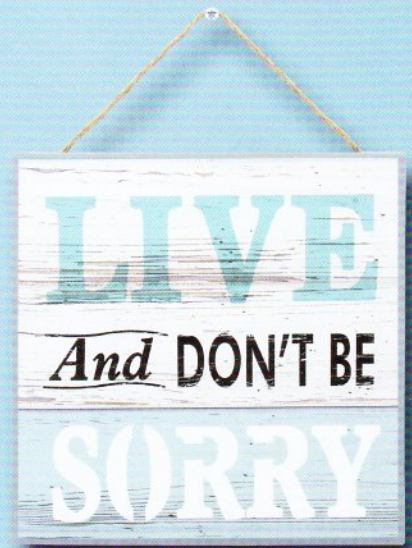
| Collar | Teirs of elegant gold chain start with
a gold circle, and two etched turquoise stones.
24"L, 26"L, 30"L with 4"L extender and a lobster
clasp closure. **\$19.50**



H711



H712



H713



H711 'CREATE YOUR DESTINY' WALL HANGING |arte de la lona| Inspiring printed wall décor with wood frame and twisted rope hanger. - 4" W x 14" H x 3/4" D • \$16.00

H712 'DO WHAT YOU LOVE' WALL HANGING |arte de la lona| Inspiring printed wall décor with wood frame and twisted rope hanger. - 7-7/8" W x 10-7/8" H x 3/4" D • \$19.50

H713 'LIVE' WALL HANGING |arte de la lona| Inspiring printed wall décor with wood frame and twisted rope hanger. - 7-7/8" W x 10-7/8" H x 3/4" D • \$19.50

H714 'GOOD FRIENDS' WALL HANGING |arte de la lona| Inspiring printed wall décor with wood frame and twisted rope hanger. - 4" W x 13-1/2" H x 3/4" D • \$16.00

H715 'FAMILY' DECO WALL HANGER WITH CLOTHES PINS |arte de la lona| Modern and stylish 'FAMILY' printed wall décor with wood frame and jute rope wrapped featuring three mini clothes pins to show off your family and friends. - 14-1/4" W x 8" H x 3/4" D • \$19.50

H716 'WIFI FREE ZONE' WOOD WALL HANGING |Colgante de pared de madera| Printed distressed solid wood plaque. - 15" W x 10-3/8" H x 1/8" D • \$19.50

H717 'IN OUR HOME' WALL HANGING |en nuestro casa del colgante de pared| Distressed solid wood wall plaque that will inspire your family and others. - 7-7/8" W x 10-3/4" H x 3/4" D • \$29.50

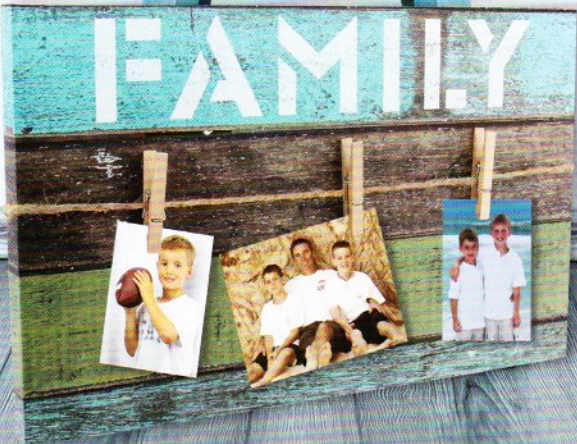
H714

GOOD
FRIENDS
ARE
HARD
TO FIND
HARDER
TO LEAVE
AND
IMPOSSIBLE
TO FORGET

H716



H715



in our
HOME
we do our best.
WE DO I'M SORRYS.
we do funny!
WE DO HUGS & KISSES.
we do loud, really well.
WE DO ENCOURAGEMENT.
we do thank you
WE DO REAL.
we do mistakes.
WE DO SECOND CHANCES.
we do love.
WE DO FAMILY!

H717



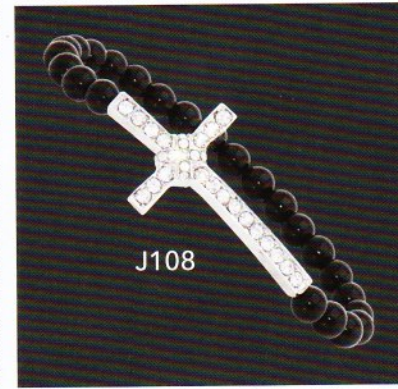
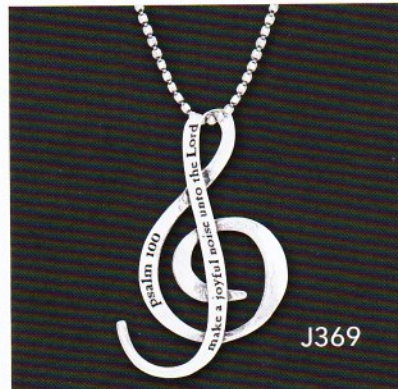
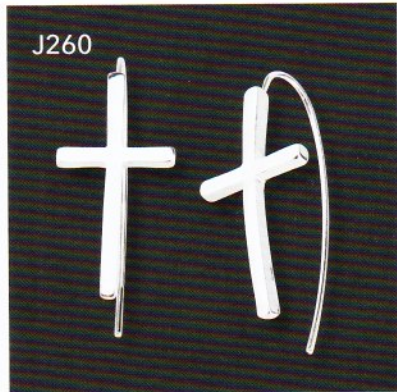
J351 PSALM 46:1 NECKLACE | Collar | Delicate silver pendant spirals Psalm 46:1 scripture accented with charm, pearl and crystal accents. Silver chain 17"L with 3"L extender and a lobster clasp closure. **\$19.50**

J260 CROSS EARRINGS | Pendientes | Elegant curved silver cross earrings with long curved hook backs. 1-½"L. **\$16.00**

J222 SILVER DECO EARRINGS | Pendientes | Modern artistic designs on a 1-½"L silver drop earrings on French wires. 1-¼"W x 1-½"L. **\$19.50**

J369 MAKE A JOYFUL NOISE NECKLACE | Collar | Music lovers passion. Graceful treble clef is engraved with Psalm 100:8. Pendant, 2-¾"L, 18"L chain, and 3-¼"L extender with lobster clasp closure. **\$19.50**

J224 SUNFLOWER DROP EARRINGS | Pendientes | Two-toned gold and silver sunflower design dangle post earrings. 1-¾"L. **\$19.50**



J574 PAW PRINT NECKLACE | Collar | A hit with lovers of every breed. Austrian crystal stones pendant necklace. 15"L with 2"L extender & lobster clasp closure. Also a great way to show team or school spirit. **\$19.50**

J83 PAW PRINT EARRINGS | Pendientes | Calling all animal lovers. Austrian crystal stones inset these silver post earrings. ½" Diameter. Also a great way to show team or school spirit. **\$16.00**

J108 BEJWELED CROSS STRETCH BRACELET | Brazaletes | Element of faith. Featuring black beads with a white crystal studded cross, a must-have bracelet. Approx. 8" stretch, one size fits most. **\$15.00**

J225 LEATHER TASSEL NECKLACE | Collar | Sturdy silver chain and unique pendant design is accented by bold, brown leather tassels. 16"L chain with 2"L pendant and 4"L tassel. **\$19.50**



H216

HOW TO WEAR A SCARF

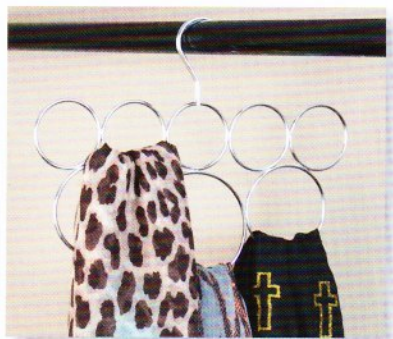
STYLE 1



One of the easiest ways to tie a scarf, for this look, find yourself a long scarf like this one. Wrap around your neck twice, leaving one scarf end on each side.



H216 CRISS-CROSS COCOA SCARF | Bufunda | Cocoa colored scarf with thin delicate criss-cross beige lines design. 100% premium viscose. 68"L x 25"W. **\$19.50**



H753 IN CIRCLE SCARF HANGER | Percha para bufanda | Organize and hold multiple scarves. 10"W x 13"H. **\$15.00**



H753

H703

Faith

H311

ALWAYS REMEMBER
You're BRAVER
THAN YOU BELIEVE
STRONGER
THAN YOU SEEM
Smarter
THAN YOU THINK
& TWICE AS
BEAUTIFUL
As You'd Ever
IMAGINED

WORDS OF
INSPIRATION
HANG THESE SIMPLE
REMINERS

Words are powerful tools to keep thoughts on the right track through-out the day.

Hang inspirational wall art in small spaces or group together pieces to form the message you and your family will see and remember.



H705

Our Family Rules
Cherish each other hug
Share
PLEASE AND THANK YOU
SAY
Try your best
BE HONEST
Dream LAUGH OUT LOUD
Smile
RESPECT OTHERS
Believe in yourself

H704



H311 ALWAYS REMEMBER WALL HANGING | *de Madera decoración* | Inspiring affirmation. Wall décor with twisted jute rope hanger. - 4" W x 12" H x ¼" D • \$16.00

H703 'FAITH' DECORATIVE WALL DÉCOR | *Texto de metal fe ilustraciones* | Show some FAITH. Solid metal décor in a script style font. - 15" W x 6" H • \$19.50

PRAY

H707

work

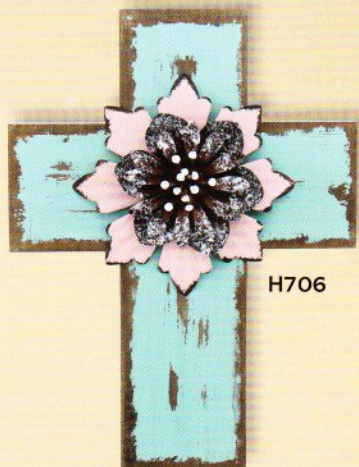
laugh

IMAGINE

dream

BLESS
THIS
HOUSE
WITH
LOVE
AND
LAUGHTER

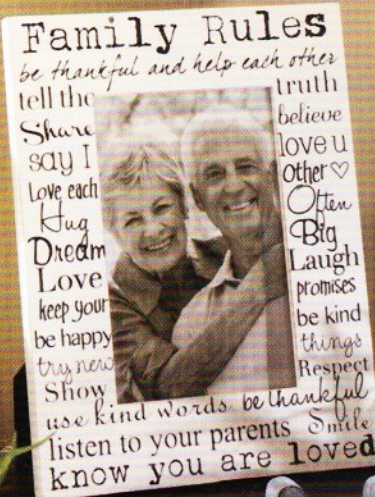
H708



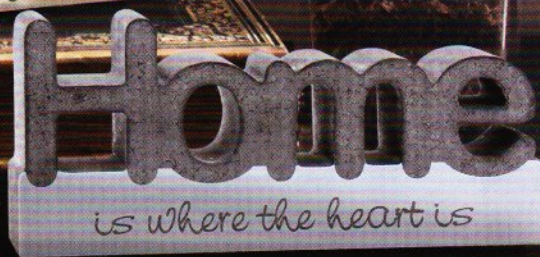
H706

H706 DISTRESSED WOOD TEAL COLORED CROSS |Cruz de color verde azulado de madera| Delicate metalwork. Painted distressed wood cross features rustic metal floral rose design.
– 6-1/2" W x 8-3/8" H x 3/8" D
• \$19.50

H709



H710



H705 'PRAYER' WOOD CROSS |'Oración' Cruz de madera| In the hands of God. Distressed painted wood cross, metal decorative accent featuring a Mother Theresa quote.
– 9" W x 15" H x 1/2" D • \$29.50

H707 'PRAY, WORK, LAUGH' WOOD WALL DÉCOR |Arte de pared de madera de inspiración| Stacked inspiration. Rustic, distressed painted boards feature printed distressed text.
– 12-1/8" W x 15" H x 3/8" W • \$24.50

H708 'BLESS THIS HOUSE' WALL HANGING |Inicio "bendición" para colgar en la pared| Sounds of home. Printed wall décor with wood frame and twisted rope hanger.
– 4" W x 11-7/8" H x 3/8" D • \$16.00

H704 'OUR FAMILY RULES' WOOD WALL SIGN |"Reglas Familiares" signo de madera| Peaceful family living. Solid wood with distressed look paint and text lettering.
– 7-7/8" W x 18-7/8" H x 3/8" D • \$24.50

H709 'FAMILY RULES' PHOTO FRAME |"Reglas" de la familia photo frame| Words of wisdom. Painted wood frame with easel-back and hanger, holds 4" x 6" photo.
– 6-1/2" W x 8-1/2" H x 1/2" D • \$19.50

H710 'HOME' TABLETOP DÉCOR |Casa mesa decoración| "Home is where the heart is" stone-look finish with sculpted modern text. – 8-1/4" L x 3-1/4" H x 1" D
• \$19.50



H217

HOW TO WEAR A SCARF

STYLE 2

This look could not be any easier to wear. Simply drape this triangular shaped scarf over your shoulders, letting the fringe add it's own statement of individuality. As stunning and beautiful viewed from the back as it is from the front!

H217 BOLD FRINGED WRAP |Bufunda| You will love this high quality, silky-soft scarf with ivory and taupe stripes and bold white fringe. 67"W x 35"L. **\$29.50**





J208

J208 CHAIN OF EVENTS NECKLACE | Collar | Gold 3-D textured circles connected by a bold gold chain and stunning drop tassels. 18"L plus 4"L drop includes 3"L extender and lobster clasp closure. **\$19.50**

J209 MIDNIGHT LEOPARD NECKLACE | Collar | Black and leopard acrylic beads form a fancy yet beautiful drop necklace. 18"L plus 2"L drop with 3"L extender and lobster clasp closure. **\$19.50**



J209



J212

J212 AZTEC RAIN FRINGE EARRINGS | Pendientes | Natural stone and gold bead design with a subtle gold fringe. 2-1/2"L drop. **\$19.50**



J213

J213 FAN OF GOLD NECKLACE | Collar | Bright and antiqued gold petals come together to form a brilliant fan display piece. 18"L, 2-7/8"L drop and 3"L extender with lobster clasp closure. **\$29.50**

J214 MIXED MEDIA STRETCH BRACELET | Brazelete | Thick natural colored beads form a bold patterned stretch bracelet. 4" diameter. One size fits most. **\$19.50**



J214

STATEMENTS

WITH THAT WONDERFULLY CURRENT BOHEMIAN FLAIR

#H611

REMEMBER

AS FAR AS ANYONE KNOWS

WE'RE A NICE NORMAL FAMILY

H611 'REMEMBER AS FAR AS ANYONE KNOWS' WALL HANGER

[La suspensión de la pared dice por lo que cualquiera sabe] Nice and normal. Three tier solid wood boards hung with twisted jute rope. - 11" W x 21-1/2" H x 3/8" D • \$24.50

H700 'GOOD' CHARCOAL SLATE COASTERS

[Baldosas de pizarra Charcoal posavasos] Good sentiments. Set of Four, rough hewn edge tiles with non-slip rubber feet. - 3-7/8" Sq. • \$19.50

H610 - DAYS OF THE WEEK CHALKBOARDS

[Días de pizarra de la semana] Don't forget! Chalkboard tiles for each day of the week strung together with jute rope on a jute hanger. (Chalk not included) - 6" W x 31" H x 1/8" D • \$19.50

H701 'DINNER IS IN THE FRIDGE' METAL WALL HANGING

[Ilustraciones de metal para colgar en la pared] Good to know! Distressed look painted metal sign with coated wire hanger. 7-3/8" W x 9-3/8" H • \$19.50

H702 FRAMED UP CHALKBOARD

[Pizarra enmarcadas] Chalk messaging! Deco hearts mini clothes pin note holders above a chalk board writing surface. (Chalk not included) - 16-7/8" W x 9-3/8" H x 1-3/8" D • \$19.50



H700

FOUR COASTERS IN THE SET

Sunday

Service At 8:30

Monday

Tuesday

Dentist Appt. at 7 a.m.

Wednesday

Thursday

Friday

Saturday

soccer practice

H610

H700

DINNER
IS IN THE
FRIDGE
(YOU JUST NEED
TO COOK IT)

H701



H702

Good
Life

Good
Food

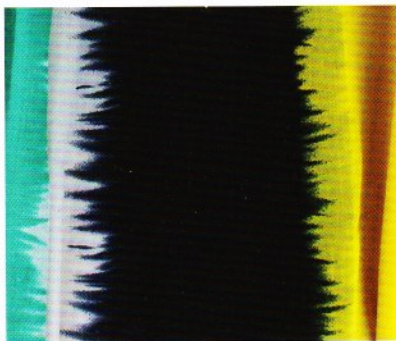
6 MORE SCARF EXPRESSIONS THAT

STYLE 3



Drape scarf over shoulder, with one end slightly longer than the other end.

Loop the longer end around your neck once. Using the non-looped end, tug a little bit of the fabric through the loop forming a semi-circle. Fit the looped end through the semi-circle.



H779 MULTI TREND-SETTER STRIPED SCARF | Bufanda | Painters practice. Multi-colored jagged painted strips of dark navy, teal and golden mustard cover this ultra wide scarf. 100% premium viscose. - 37"W x 72"L. • **\$19.50**

STYLE 4



Take the scarf and find the middle. Put it on the front of your neck and let the ends of the scarf rest against your back.

Bring the ends of the scarf around to the front again.

Take the ends of your scarf and tuck them into the loop around your neck.



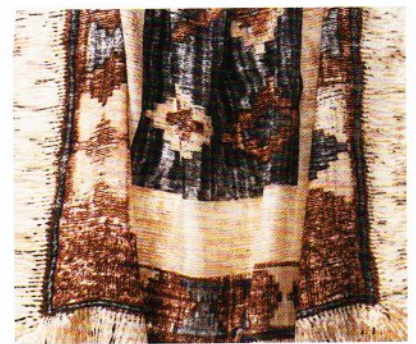
H219 NEON SAILOR STRIPED SCARF | Bufanda | Traditional sailor striped ultra wide scarf kicked up a notch in neon pink and orange. 100% premium viscose. - 38"W x 72"L. • **\$19.50**

STYLE 5



To get this feel, roll your scarf to create a long, cylindrical piece.

Then wrap it around your neck and tuck in the one end into the loop right at the front of your neck.



H220 DESERT ACCENTS SCARF | Bufanda | Luxuriously soft & cozy feel. This beige with rustic black and brown accented desert style scarf is a must have. You will love the feel, look & price. 100% premium viscose. - 36"W x 72"L. • **\$19.50**

MAKE THEIR VERY OWN STATEMENT

STYLE 6



The infinity scarf is a complete circle where all that is required is to cross the scarf in front of you to create a figure 8.

Put the 2 sides together and around your neck.

It can also be tied into a knot in front, for a completely different look.



H761 ZEBRA INFINITY SCARF

|Bufanda| One of our best sellers. Two-toned infinity loop scarf in zebra stripes and a bright turquoise solid. 100% premium viscose. - 30"W x 34"L • **\$19.50**

STYLE 7



Drape scarf over shoulders, with one end longer than the other end.

Loop the longer end around your neck twice.

Fit the end when you loop through the loop the second time so it dangles down.



H748 COOL CAT SCARF

|Bufanda| Unique multi tri-panel scarf of solids and animal jaguar print, long eyelash fringe on ends. 100% premium viscose. - 28"W x 72"L, three 14"L panels. • **\$19.50**

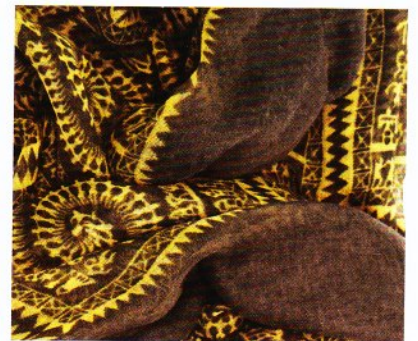
STYLE 8



Most popular and so simple.

Fold the scarf in half. Put it behind your neck and bring both ends to the front.

Now pull the loose ends through the loop.



H780 EGYPTIAN PATTERN

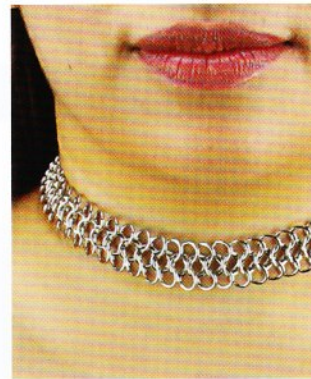
MATCH SCARF |Bufanda| Ultra wide scarf features a hieroglyphic repeat print with solid trim edges. Can be worn as a scarf or shawl. 100% premium viscose. - 42"W x 72"L. • **\$19.50**

J255

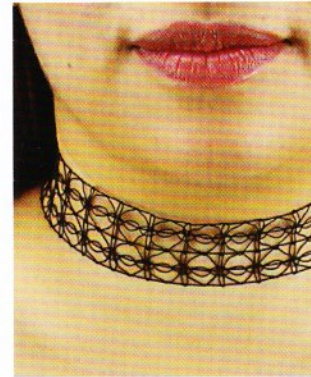
CHOKERS

J255 LARIAT CHOKER
 |Collar| Two velvet tassels loop through a gold ring to form this lengthy and elegant choker. Approx. 30"L. **\$19.50**

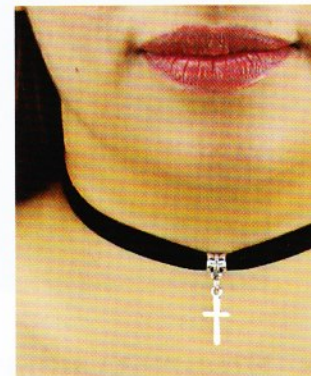
J256 SHELL ROPE CHOKER
 |Collar| Iridescent shell pendant with an etched flower design on a petite braided black swade choker. 11-½"L with a 3"L extender and lobster clasp closure. **\$19.50**



J257 SILVER EVENTS CHOKER |Collar| Unique silver design form this stunning connected choker. 11"L with a 3"L extension & lobster closure. **\$19.50**



J258 LACEMAKER CHOKER |Collar| Delicate double row lace pattern choker. 11-½"L with a 4-½"L extender and lobster clasp closure. **\$19.50**



J259 FAITH CHOKER |Collar| Single silver cross accents this soft black velvet choker. 12"L with a 2"L extender and lobster clasp closure. **\$19.50**

CHOKERS ARE BACK IN A VERY, VERY BIG WAY.

THESE SELECTIONS WE ARE OFFERING WILL

GIVE YOU THAT SOMETHING-SPECIAL LOOK.