

**Mouse Anti-DNMT1 [DNMT1/2061]: MC0491, MC0491RTU7**

**Intended Use:** For Research Use Only

**Description:** DNMT1 is one of three families of enzymes (DNMT1, DNMT2 and DNMT3) that play a role in the establishment and regulation of tissue-specific patterns of methylated cytosine residues. Abnormal methylation patterns are associated with certain human tumors and developmental abnormalities. DNMT1 is responsible for maintenance of the DNA methylation pattern after DNA replication. DNMT1 is the major methyltransferase responsible for methylating DNA. It is widely expressed in normal tissue and increased expression has been observed in many types of cancers. Overexpression of DNMT1 has been associated with early cancer development and cancer progression.

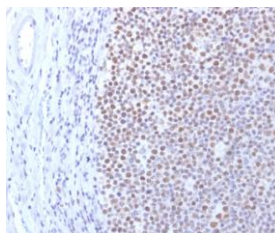
**Specifications:**

Clone: DNMT1/2061  
Source: Mouse  
Isotype: IgG2b/k  
Reactivity: Human  
Localization: Nucleus  
Formulation: Antibody in PBS pH7.4, containing BSA and  $\leq 0.09\%$  sodium azide (NaN<sub>3</sub>)  
Storage: Store at 2°- 8°C  
Applications: IHC  
Package:

Description	Catalog No.	Size
DNMT1 Concentrated	MC0491	1 ml
DNMT1 Prediluted	MC0491RTU7	7 ml

**IHC Procedure\*:**

Positive Control Tissue: HCC, tonsil  
Concentrated Dilution: 50-200  
Pretreatment: Tris EDTA pH9.0, 15 minutes using Pressure Cooker, or 30-60 minutes using water bath at 95°-99°C  
Incubation Time and Temp: 30-60 minutes @ RT  
Detection: Refer to the detection system manual  
\* Result should be confirmed by an established diagnostic procedure.



FFPE human tonsil stained with anti-DNMT1 using DAB

**References:**

1. TonEBP/NFAT5 promotes obesity and insulin resistance by epigenetic suppression of white adipose tissue beiging. Lee HH, et al. Nat Commun 10:3536, 2019.
2. LMP2A induces DNA methylation and expression repression of AQP3 in EBV-associated gastric carcinoma. Wang J, et al. Virology 534:87-95, 2019.
3. Aberrant DNA methylation of Tgfb1 in diabetic kidney mesangial cells. Oba S, et al. Sci Rep 8:16338, 2018.

Doc. 100-MC0491  
Rev. A