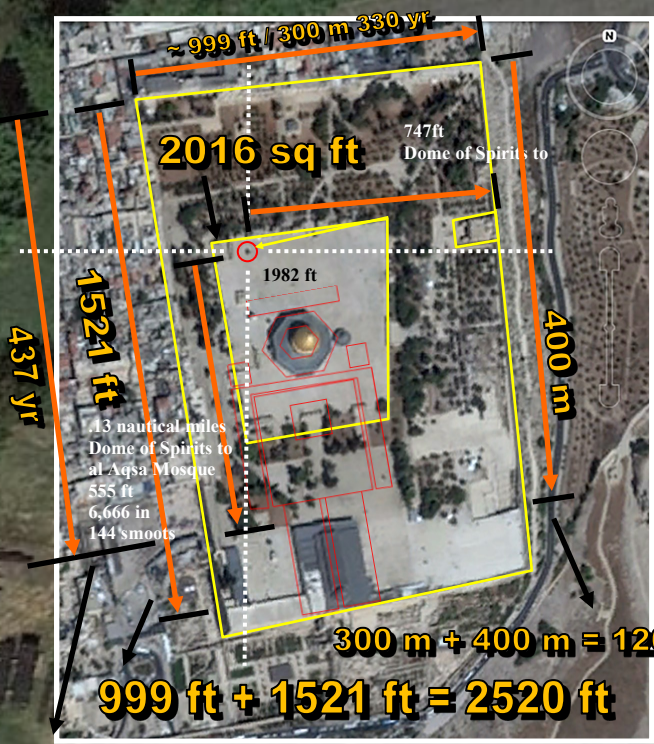


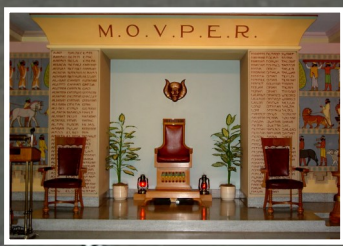
WASHINGTON MASONIC NATION

THE SECRET LEY LINES OF THE LUCIFERIAN BROTHERHOOD OF DARKNESS

TEMPLE MOUNT



The 'throne' to Lucifer in his Temples of so called Light. Jesus exposed these places of gatherings as Synagogues of Satan. The 'Great Work' of the Builders is enthrone their Christ Cherub want-to-be god in the Holy of Holies. The Bible also predicts that this will occur at a future time, perhaps in the 3rd Temple and once the Ark of the Covenant is revealed to maybe coincide with the 'confirming of the Covenant'.

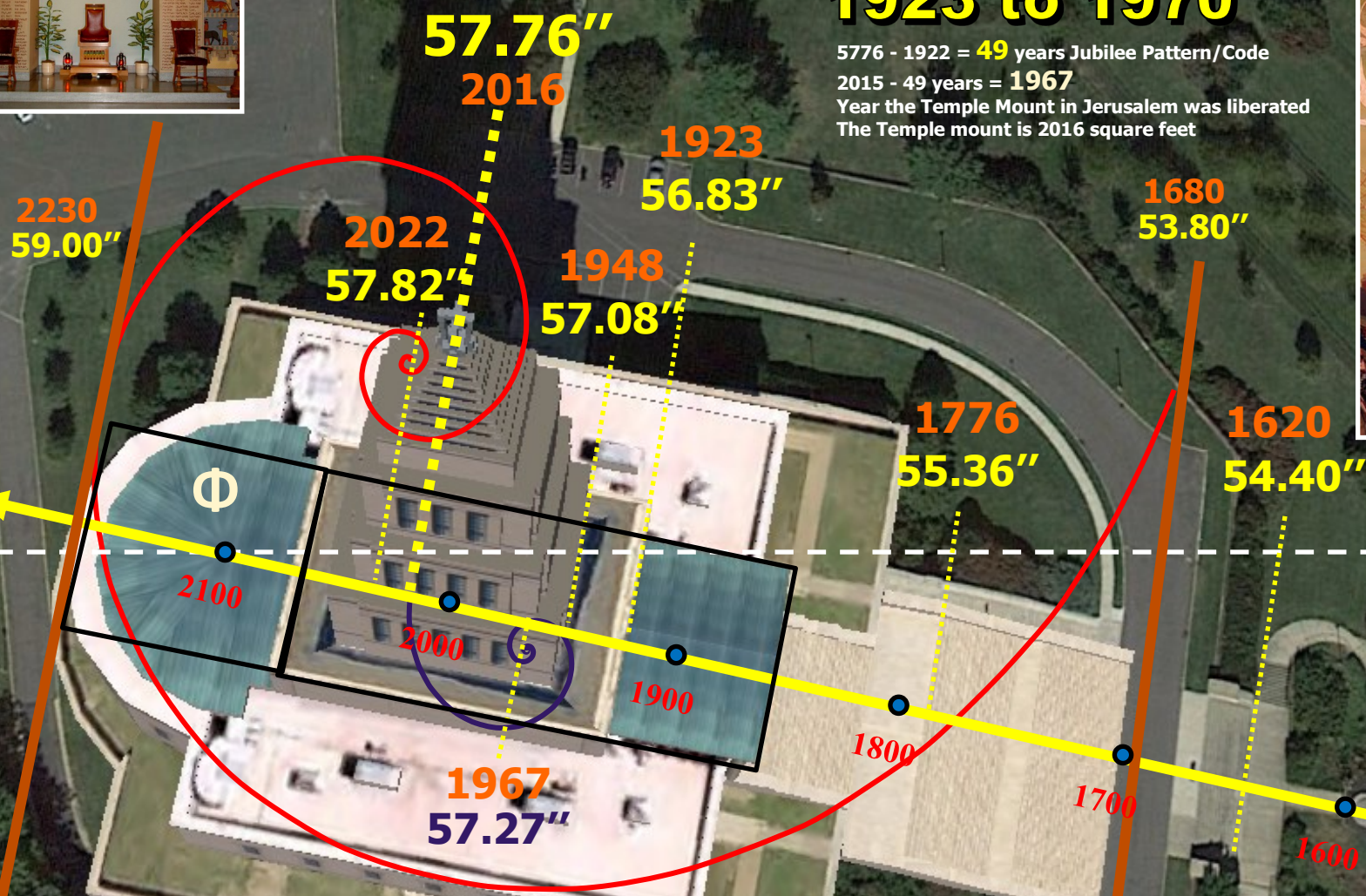


Will the year 5776 that is encrypted in Masonic buildings see the 'light of day' when the 3rd Temple in Jerusalem will be constructed to eventually cause Lucifer to sit on the Throne of YHVH, that is the Mercy Seat of the Ark of the Covenant? As in the prior Temples of YHVH, when the Glory departed, the darkness filled the vacuum. Perhaps when the Rapture takes place is when the darkness of the AntiChrist will fill the Earth.



Lucifer, the Blazing Star wants your children. Some more Adam's and Eve's to seduce, lie to, use and ultimately destroy because it was 1 Child, Jesus that destroyed Lucifer's Great Work.

PYRAMIDION



The Rapture Event?

1923 to 1970

5776 - 1922 = 49 years Jubilee Pattern/Code
 2015 - 49 years = 1967
 Year the Temple Mount in Jerusalem was liberated
 The Temple mount is 2016 square feet



120th Anniversary Washington's Innauguration

Apr 30, 1909

The same trowel that George Washington used to dedicated the Corner Stone was used to commemorate the Corner Stone of the Washington Masonic Memorial.

Temple of Solomon Blueprint

- HOLY OF HOLIES**
 Ark of the Covenant
- HOLY PLACE**
 The Menorah of Light
- PORTICO**
 Boaz and Japheth
- LAVER**
- ALTAR**