

**FEBRUARY 2016**

# 26<sup>th</sup> Annual BNC Phoenix Book and Author

## **AUTHORS and SHOPPING and FOOD, Oh My!**

Come for the books, come for the authors, stay for the shopping, the food and the fun! Doors open at 9:00 am, so come early to shop our new and returning boutiques and be ready for author signings at 9:30 am. Don't forget - the boutiques will remain open after the program ends.

**Monday, March 14, 2016 at the JW Marriott Desert Ridge Resort  
5350 E. Marriott Drive, Phoenix, AZ**

**Accel's Gifted Hands Boutique**  
Calle Rose Boutique  
Ceramics by Judith  
The Classy Bag Lady  
glassdesign  
Gotta Have It!  
Jacqueline B Clothing



**Kiki Bean and Bedhead**  
Roberto Mantellassi  
Silver Concepts Plus  
Studio Nicole  
Treasured Accessory  
Woven Angel

<b>Book Sales Boutiques 9:00</b>	<b>Author Signings 9:30</b>	<b>Dining Room Opens 10:45</b>	<b>Program Begins 11:00 Sharp</b>	<b>Lunch Served 12:30</b>	<b>Boutiques Book Sales Remain Open</b>
--	-------------------------------------	--	---	-----------------------------------	---

**Cost: \$125 with a \$5 coupon for a book purchase**

**For reservations or further information,  
Contact: Paula Eckstein, [paula.eckstein@gmail.com](mailto:paula.eckstein@gmail.com) or Julie Bronstein, 480-797-5691**

**For additional information on Book and Author Events see pages 3, 4, 5.**



## President's Message

Dear BNC Phoenix Colleagues,

The arrival of the month of February always lifts my spirits! Perhaps it's because of Valentine's Day, with its cheerful hearts and flowers (and chocolate!) and sense of 'love is in the air'. Or maybe it's just my Chicago roots - February always meant that we were 'over the hump' of winter, with spring in our sights, even though snow could still fall in April!

Here in Arizona, with our beautiful sunny days all winter (even though we complain about the 'chill'), February is an exciting and uplifting month for our Brandeis Phoenix Chapter. We had the opportunity to be Brandeis students for a day just a few weeks ago, engaging with our fabulous January University on Wheels Professor Tom Doherty. Another learning opportunity awaits, as our annual Open Meeting has been held in February for several years now. This year, we will gather on February 17<sup>th</sup> at McDowell Mountain Ranch Center. This meeting has three highlights: first, we will vote to elect our Chapter's leadership for the coming year! Next, we will recognize and honor our members, including long-time members, past and present leaders, and dedicated volunteers. Last, but not least, we will laugh together as we learn from our inspiring speaker, certified Laughter Yoga and Wellness instructor Theresa Weeding. More details can be found on **page six**.

February also marks the final countdown to our 26<sup>th</sup> Annual Book and Author events. There is a flurry of activity as committee members attend to every detail to ensure a wonderful, exciting two days of events on March 13<sup>th</sup> and 14<sup>th</sup>. Reservations are flowing in daily and tables are filling up rapidly, so be sure to make your reservations now! Book and Author events are our Chapter's biggest fundraiser, making us the BNC's leader in philanthropic support for Brandeis University. As in the past few years, your contributions will be directed towards Brandeis' Sustaining the Mind Fund, supporting scholarships and research in neurodegenerative diseases. Become a Bookmark and join us at the cocktail reception with the authors on Sunday, March 13<sup>th</sup>. Plan a larger contribution to Sustaining the Mind and have precious one-on-one time with your favorite authors at the Sunday evening dinner! Buy the authors' featured books and have them autographed on Sunday evening or Monday. Shop the fabulous boutiques on Monday - come early, stay late - buy birthday, hostess and holiday gifts for the year plus a few 'treats' for yourself - all to the benefit of Brandeis University. I look forward to seeing you soon.

All the best,  
Carol Abrams,  
President, BNC Phoenix Chapter

Table of Contents is interactive. **CLICK** on any page title. **CLICK** on any page number to return here.

### TABLE OF CONTENTS

<b>Cover</b> .....	<b>1</b>	<b>Calendar 3</b> .....	<b>12</b>
<b>President's Message</b> .....	<b>2</b>	<b>Membership</b> .....	<b>13</b>
<b>Author Bios</b> .....	<b>3</b>	<b>Nominations and Rosters</b> .....	<b>14</b>
<b>Author Bios and Bookmark Information</b> .....	<b>4</b>	<b>Social Justice</b> .....	<b>15</b>
<b>Bookmark</b> .....	<b>5</b>	<b>Book Fund</b> .....	<b>16</b>
<b>Celebration of Members</b> .....	<b>6</b>	<b>STM, BNC Scholarship, Board</b> .....	<b>17</b>
<b>Study Group News</b> .....	<b>7</b>	<b>BNC Scholarship Campaign</b> .....	<b>18</b>
<b>Concerts and Conversations</b> .....	<b>8</b>	<b>Brandeis Bits</b> .....	<b>19</b>
<b>UOW Photos</b> .....	<b>9</b>	<b>Save the Date, Mission Statement</b> .....	<b>20</b>
<b>Calendar 1</b> .....	<b>10</b>	<b>Board Contacts</b> .....	<b>21</b>
<b>Calendar 2</b> .....	<b>11</b>		



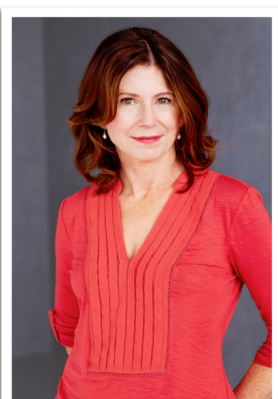
## 26<sup>th</sup> Annual BNC Phoenix Book and Author



March 14, 2016 ~ Come One, Come All

Paula McLain - Historical Fiction  
Steve Martini - Mystery/Suspense  
Linda Hirshman - Non-Fiction  
B. A. Shapiro - Art Mystery  
Ed Tarkington - Fiction

Can't wait until March to find out more about these authors?  
Here's a sneak peek at three of our featured speakers



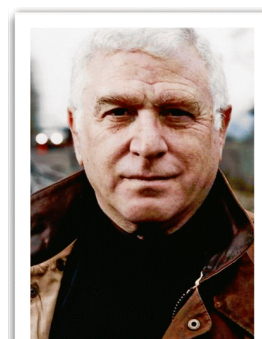
### Paula McLain

Paula McLain's latest book, *Circling the Sun*, is the fictionalized story of Beryl Markham, a record-setting aviator caught up in a love triangle with safari hunter Denys Finch Hatton and Karen Blixen. Blixen, writing as Isak Dinesen, wrote her famous memoir *Out of Africa*

about life in Kenya, Africa.

Paula was born in Fresno, California in 1965. After being abandoned by both parents, she and her two sisters became wards of the California Court System, moving in and out of various foster homes for the next fourteen years. When Paula aged out of the system, she supported herself by working as a nurse's aide in a convalescent hospital, a pizza delivery girl, an auto-plant worker, and a cocktail waitress - before discovering she could (and very much wanted to) write. She received her MFA in Poetry from the University of Michigan in 1996. Her previous book, *The Paris Wife*, a New York Times and international bestseller, has been published in thirty-four languages. Paula has been the recipient of fellowships from Yaddo, The MacDowell Colony, the Cleveland Arts Prize, the Ohio Arts Council and the National Endowment for the Arts. She is also the author of two collections of poetry; *Like Family: Growing up in Other People's Houses A Memoir*; and a first novel, *A Ticket to Ride*. She lives with her family in Cleveland.

### Steve Martini



Steve Martini was born in San Francisco and grew up in the Bay Area and Southern California. An honors graduate of the University of California at Santa Cruz, Martini's first career was in journalism. He worked as a newspaper reporter in Los Angeles and as a correspondent at the California State Capitol in Sacramento, specializing in legal issues, before gaining his law degree from the University of the Pacific's McGeorge School of Law. In 1974 he entered private law practice in California where he appeared in both state and federal courts. During his law career he worked as a legislative representative for the State Bar of California, served as special counsel to the California Victims of Violent Crimes Program and was an administrative law judge and supervising hearing officer.

In 1984, Martini turned his talents to fiction. *Compelling Evidence*, the novel that introduced attorney Paul Madriani, was published in 1992. A national bestseller, that novel earned Martini a critical and popular following.

The author of seventeen books, Martini's current mystery, *The Enemy Inside*, continues the Paul Madriani series and focuses on a morass of double dealing and murder that leads to the very highest levels of American political power.



**Book and Author Bios continued. . .****Linda Hirshman**

Linda Hirshman is a lawyer, a cultural historian and the author of *Victory: The Triumphant Gay Revolution* as well as many other books. She received her JD from the University of Chicago Law School and her PhD in philosophy from the University of Illinois at Chicago. She has taught philosophy and women's studies at Brandeis University. Her writing has appeared in the *New York Times*, the *Washington Post*, *Slate*, *Newsweek*, the *Daily Beast*, and *POLITICO*. She currently divides her time between New York City, NY and Phoenix, AZ.

Her latest book is *Sisters In Law: How Sandra Day O'Connor and Ruth Bader Ginsburg Went to the Supreme Court and Changed the World*. As an attorney who argued before the Supreme Court, an historian of social movements and

a feminist who came of age personally and professionally admiring the accomplishments of these two justices, this is the book Hirshman was born to write.



# Bookmark



## Your Bookmark Gift Can Really Help Make a Difference!

Each of us hopes to leave the world a better place than we found it. Your contribution to the Brandeis National Committee's Sustaining the Mind Fund will help to do just that. This fund, which supports important research in neurodegenerative diseases such as Autism, ALS, Parkinson's and Alzheimer's, provides scholarship support for students in the sciences, as well as resources for top research scientists to continue their groundbreaking work.

The Phoenix Chapter appreciates all donations, from members and non-members alike. When you send in your reservation for Book and Author, you can become a Bookmark donor by making a donation as described below.

Bookmark donors will be invited to attend the Bookmark Cocktail Reception at a beautiful private residence the evening before the luncheon. You'll have a fabulous time socializing, enjoying fine wine, elegant hors d'oeuvres and meeting the notable authors who will speak the next day.

Donors at the Special Editions Level (\$3,500+), the Limited Editions Level (\$1,500+), and the Rare Finds Level (\$1,000+) are invited to a dinner with the authors following the Cocktail Reception.

Please join us Sunday evening, March 13, 2016, for a memorable evening of cocktails and conversation, while supporting a cause that affects us all.





## 26<sup>th</sup> Annual Phoenix BNC Book and Author Bookmark Donors

Carol and Chuck Abrams  
Stephanie Altman  
Lori Carmel  
Priscilla Cohen  
Jane Coleman  
Harriet and Elliott Gartner  
Joyce and Neil Goldstein  
Sue and Bob Karp  
Carol and Allan Kern  
Ellen and Bob Kirschenbaum

Sara and Jay Leopold  
Judy and Warren Levine  
Ruth Anne Myers  
Lori and Steve Roth  
Fran Sachs  
Nancy Sacks and Stu Goldberg  
Marcy Strauss and Wayne Stutzer  
Dorry and Harry Sunenshine  
Iris Wigal

## Bookmark Donor Levels of Giving benefitting

*Sustaining the Mind: Research and Scholarship in Neurodegenerative Diseases*

**NEW RELEASES** (\$200-\$299) - Cocktail Reception only - Invitation for two  
(Does not include the luncheon at \$125 per person)

**BEST SELLERS** (\$300-\$499) One Luncheon, Cocktail Reception for two

**CLASSICS** (\$500-\$749) Two Luncheons, Cocktail Reception for three

**FIRST EDITIONS** (\$750-\$999) Two Luncheons, Cocktail Reception for three, book of choice from a featured author

**RARE FINDS** (\$1,000-\$1499) Two Luncheons, Cocktail Reception for three, Dinner with the authors for one, book of choice from a featured author

**LIMITED EDITIONS** (\$1,500-\$3,499) Two Luncheons with preferred seating, Cocktail Reception for four, Dinner with the authors for two, two books of choice from the featured authors, Membership in the Justice Brandeis Society

**SPECIAL EDITIONS** (\$3,500 and above) Two Luncheons with preferred seating with an author, Cocktail Reception for four, Dinner with the authors for two, all the books from the featured authors, Membership in the Justice Brandeis Society

Donors making a gift of \$1,000 or more in addition to the fair market value of any of the levels described will be members of the Justice Brandeis Society. Donors making a gift of \$5,000 or more in addition to the fair market value of any of the levels described will be listed on the BNC's Major Donor Tribute Wall in the Library foyer at Brandeis University.

# Annual Celebration in Honor of our Members



**Wednesday, February 17, 2016 at 9:30 a.m.  
McDowell Center at McDowell Mountain Ranch  
16116 E McDowell Mountain Ranch Rd, Scottsdale, AZ**

Our Program features great refreshments, recognition of our Members, and a dynamic Speaker who will share with us the benefits of laughter and yoga

*Theresa Weeding*

*Certified Laughter Yoga Leader*

*"We don't laugh because we are happy, we are happy because we laugh."*

*William James: philosopher, psychologist, and physician.*



Theresa Weeding is a certified Laughter Yoga Leader. Laughter Yoga combines playful laughter exercises with deep breathing...no contortions required! Since 2012, Theresa has taught over 140 laughter classes to Arizona groups, organizations, communities, and conferences. Theresa has worked in community health and wellness outreach for eight years and delights in working with older adults. She has taught numerous chronic disease classes and is a certified age sensitivity trainer. Theresa is a former Peace Corps Volunteer, an author, a mother of four girls, and a devoted coffee drinker.

Theresa believes that laughter is a key factor in living a joyful, healthy life and that ten minutes of laughter a day does indeed help keep the doctor away!

**RSVP to Sue Karp by February 10<sup>th</sup> (480) 451-9511 [suekarp1@me.com](mailto:suekarp1@me.com)**

Questions? Please contact:

Stephanie Altman, [steffaltman@gmail.com](mailto:steffaltman@gmail.com)

P.S. You will not be expected to twist yourself into a pretzel at this event!

# Study Group News

## ARIZONA AUTHORS

**Monday, February 22<sup>nd</sup> – 12:30-2:30pm**

**JCC, 12701 N Scottsdale Rd**

Dr. Matthew Whitaker earned a BA in Sociology and a BA in History at Arizona State University, where he also completed an MA in United States History. Whitaker earned a PhD in History, with honors, at Michigan State University. He is an award-winning educator, author, motivational speaker, and diversity and inclusion consultant. He has also worked as a professor of history at Arizona State University.

Dr. Whitaker is the editor of three books, including *Hurricane Katrina: America's Unnatural Disaster* and he is the author of *Race Work: The Rise of Civil Rights in the Urban West*. *Race Work* takes place in the segregated city of Phoenix in the post WWII era, so this should be of special interest to us. RSVP - Merrill Kalman [mskbflo@aol.com](mailto:mskbflo@aol.com) Guests welcome - \$5.00



## NEW BOOK GROUP!

### B-PUZZLED: MYSTERY & SUSPENSE

**4<sup>th</sup> Mondays - 1:00 pm**

**(except Feb - meet on the 29th)**

**18<sup>o</sup> Restaurant at the Ice Den,**

**9375 E. Bell Road**

**Minimum: 10, Maximum: 15**



Due to popular request, a new book group is starting soon and the focus will be on Mystery & Suspense. The first book to be discussed on Feb. 29<sup>th</sup> is *The Art Thief* by Noah Charney.

For more information, please contact the facilitators. To register, [click HERE](#) for the registration form and write in the name of the group.

Andi Freed, [dr-craberry@gmail.com](mailto:dr-craberry@gmail.com)

Alyce Helfman, [ahelfman2002@yahoo.com](mailto:ahelfman2002@yahoo.com)



## MEN OF BRANDEIS (MOB)

February 10 - We will have a guest speaker, Blessing McAnlis-Vasquez, Marketing Project Manager from the Salt River Community. She will discuss future plans for the SRC and how it affects the 101 corridor in Scottsdale. For more information, please contact the facilitators:

Leith Baletin

[lbaletin@att.net](mailto:lbaletin@att.net) 480-874-9434

Sam Summer

[samsummeraz@yahoo.com](mailto:samsummeraz@yahoo.com) 480-488-1540

## SPECIAL NOTE ABOUT FULL GROUPS:

Even a full group may have openings from time to time - if you are interested in a particular group, contact the facilitator(s) to see if space is available. Very often there is! Look for the monthly calendars in this bulletin for group details, which include contact information for the facilitators. A \$5 guest cost will apply.

For details and to sign up for study groups, see the Guide and Registration Form on our website: [www.brandeisphoenix.com/StudyGroups.html](http://www.brandeisphoenix.com/StudyGroups.html)

Study Group Vice-Presidents: Merrill Kalman,  
Sara Leopold and Ronee Siegel [phxstudygroups@gmail.com](mailto:phxstudygroups@gmail.com)



# Concerts and Conversations



The fourth and final program of the 2015-16 series will feature Arizona Opera Artists Rhea Miller, soprano and Andrew Peck, tenor. They will be accompanied by pianist Thomas Nixon and will present a selection of famous arias and duets from their operatic repertoire.

Doors will open at 12:45 pm. The program will take place from 1:00 - 2:30 pm on Monday, February 8, 2016, at Palo Cristi Church, located at 3535 E. Lincoln Drive, Paradise Valley 85253 and will be followed by refreshments.

CONTACT: Joan Sitver, [joansitver@aol.com](mailto:joansitver@aol.com) (602) 971-0012 for more details. Guest Cost: \$5.00



## Rhea Miller

Rhea Miller, soprano, made her opera debut as Papagena in Arizona Opera's production of *Die Zauberflöte* in 2015. Ms. Miller was also the Soprano Teaching Artist for Arizona Opera's 2013 and 2014 *OperaTunity* Outreach Program and she had the opportunity to Cover/Study many of the roles in Arizona Opera's productions. Ms. Miller received her Master of Music degree in Vocal Performance from The Florida State University and is currently pursuing her Doctor of Musical Arts degree in Vocal Performance at Arizona State University. Her performance and concert credits include the title roles in opera companies and concert choral groups around the country.

## Andrew Peck

Tenor Andrew Peck and his family are new to Arizona. After teaching at the University level for five years, he is resuming Doctoral studies at Arizona State University. Andrew holds a Bachelor's degree from BYU-Idaho, and a Master's degree from the University of Houston. While teaching in Idaho, Andrew sang for Opera Idaho as their Artist-in-Residence for two seasons. Andrew has just returned from Arkansas where he sang the title role in *The Tales of Hoffmann* at Opera in the Ozarks. Among many others roles, he has covered the roles of Don José (*Carmen*), Alfredo Germont (*La Traviata*), and was a Cover/Study through ASU and Arizona Opera, covering The Duke in Arizona Opera's 2014 production of *Rigoletto*. Andrew also performed with the Idaho Falls Opera Theatre, Idaho Falls Symphony, and the Houston Grand Opera chorus.



## Thomas Nixon

American Pianist Thomas Nixon received his DMA in Collaborative Piano from Arizona State University in 2014. He is a prizewinner of numerous competitions including the Jacob Flier International Piano Competition, ASU Concert of Soloists Concerto Competition, and the Nashville Symphony Curb Records Competition. Thomas Nixon has performed with the Knoxville Opera Company, Knoxville Symphony Orchestra, Arizona State University Orchestra, Lyric Opera Theatre, Ballet Arizona, Arizona Opera, Phoenix Boys Choir, and the Phoenix Symphony. An avid collaborator, Mr. Nixon has worked with many important artists, including Maestro Charles Bruffy, conductor of the Grammy Award winning Phoenix Chorale,

and many stars of Broadway and television, including Megan Hilty and Alfie Boe. Dr. Nixon currently serves as an adjunct faculty member at Glendale Community College in Glendale, AZ and is also frequently featured on KBAQ Phoenix Classic Radio.



# University on Wheels



**Carol**



**Speaker Tom Doherty**



**Marcia**



**Sheila and Shelley**



**Georgia and Sue**



**Judy and Ellen**



**Nancy, Nan Ellen**



**Sue and Judy**



**Sue, Brina and Sue**



**Marcia, Arlene, Steffy and Nan**



**Photos by: Chuck Abrams**



**Sheila and Jo Ellen**



**EVEN FULL GROUPS SOMETIMES HAVE ROOM FOR GUESTS! A \$5 GUEST COST APPLIES.  
PLEASE CONTACT FACILITATORS FOR AVAILABILITY.**

FEB	GROUP	TIME	STUDY GROUP NOTES	FACILITATORS
TBA	GIRLS' NIGHT OUT	TBA	Activities vary each time. Details will be emailed to participants. For more information, contact a facilitator.	Wendy Cohen <a href="mailto:wencohen@cox.net">wencohen@cox.net</a> 602-316-2993 Halette Fealey <a href="mailto:caseysadie@aol.com">caseysadie@aol.com</a> 480-529-1247
TBA	PHOENICIANS OF BNC	TBA	This group meets for a potpourri of activities, primarily in central Phoenix locations. The day of the week, time and place varies. Details will be emailed to participants. For more information, contact a facilitator.	Joellyn Pollock <a href="mailto:Joellyn_pollock@yahoo.com">Joellyn_pollock@yahoo.com</a> 602-257-4327 Marilyn Pomerantz <a href="mailto:pomerantzcentral@cox.net">pomerantzcentral@cox.net</a> 602-758-8651 Iris Wigal <a href="mailto:wiggley@cox.net">wiggley@cox.net</a> 602-274-8771
1	PROMOTING HEALTHY RELATIONSHIPS *NEW*	1:00	Once a month, retired psychotherapist James P. Krehbiel, M.S., Ed.S. will discuss ways to promote healthy relationships. Location will be emailed to group members.	Andi Freed-Krehbiel <a href="mailto:drcraberry@gmail.com">drcraberry@gmail.com</a> 480 951-6572
2 9 16 23	YOGA	TBA	An all-levels class good for first-timers as well as experienced practitioners. Class led by Dr. Nancy Siefer, a registered and certified yoga instructor. Bring a mat, water, and any prop you like to use. Location and time will be emailed to participants.	Nancy Siefer <a href="mailto:n.siefer@gmail.com">n.siefer@gmail.com</a> 480-577-1439
2	CONTEMPORARY ISSUES DISCUSSION GROUP #2 (New day)  <b>FULL</b>	9:30	Join lively conversation as we explore current events that shape the future of the world in which we live. Participants will be notified of the location by email.	Janis Lipman <a href="mailto:janislipman@gmail.com">janislipman@gmail.com</a> 203-216 0177 Joyce Goldstein <a href="mailto:joyce@goldstein.us">joyce@goldstein.us</a> 480-307-9300
2	CURRENT EVENTS * NEW *	10:30	Join the lively conversation as the group explores current events that shape the future. Participants will be notified of the location by email.	Nancy Sacks-Goldberg <a href="mailto:nhshobo@aol.com">nhshobo@aol.com</a> 480-661-3852 Gladys Simon <a href="mailto:gladsi26@hotmail.com">gladsi26@hotmail.com</a> 480-282-2047
4 18	INTERMEDIATE HIKING CLUB (New name)	7:30	Hikes in the Phoenix area at a brisk pace. Plan on 4-6 miles, around three hours, plus destination time. Members will be notified prior to each hike of place and time. Join us after the hike for a different brunch spot each time.	Nancy Siefer <a href="mailto:n.siefer@gmail.com">n.siefer@gmail.com</a> 480-577-1439 Caryll Webner <a href="mailto:caryllwebner@yahoo.com">caryllwebner@yahoo.com</a> 602-989-1348
4 18	LEISURELY HIKING	8:00 or 8:30	Hike at a comfortable pace on trails in Phoenix, Scottsdale and beyond. Plan on 2.5 - 4 miles round trip, 2 - 2.5 hours, plus destination time. After the hike, join us for brunch at a nearby restaurant. Members will be notified of the place and time.	Ellen Kirschenbaum <a href="mailto:ellenk102@cox.net">ellenk102@cox.net</a> 602-214-5212 Bob Kirschenbaum <a href="mailto:bobkirschenbaum@gmail.com">bobkirschenbaum@gmail.com</a> 602-614-5212
4	JEWISH BOOK GROUP	10:00	Meet at Congregation Beth Israel in the library (56th and Shea). If you would like the complete list of books, please call Ellen. RSVP to Ellen for each meeting.	Ellen Tuckman 602-953-9307
4 11 18 25	INTERMEDIATE MAH-JONGG	11:45	This weekly group is intended for experienced players. A thorough knowledge of the rules and a fast pace of play are expected. Meet at the JCC for lunch first. Play starts at 12:15	Sandy Blum <a href="mailto:sanblum@cox.net">sanblum@cox.net</a> 480-905-3225
4	SUN LAKES POTPOURRI	1:30	This group includes book and movie reviews, discussions on contemporary issues and visits to local places of interest. Contact the facilitators for the location.	Irene Kestenbaum <a href="mailto:irenek0426@gmail.com">irenek0426@gmail.com</a> 480-883-7639 Barbara Gold <a href="mailto:bzgold9333@gmail.com">bzgold9333@gmail.com</a> 480-802-7945
4 18	NEXT LEVEL BRIDGE	2:00	This group is intended for advanced beginner bridge players who would like to further enhance their conventional bidding and playing skills. The group is open to both men and women. Members will be notified by email of the location.	Bob Kirschenbaum <a href="mailto:bobkirschenbaum@gmail.com">bobkirschenbaum@gmail.com</a> 602-614-5212



FEB	GROUP	TIME	STUDY GROUP NOTES	FACILITATORS
5	BOOMERS	10:00	<i>Museum of the West</i> For more information, contact the facilitators at <a href="mailto:brandeisboomers@gmail.com">brandeisboomers@gmail.com</a>	Ronee Siegel <a href="mailto:brandeisboomers@gmail.com">brandeisboomers@gmail.com</a> 917-273-0393 Ellen Kirschenbaum <a href="mailto:ellenk102@cox.net">ellenk102@cox.net</a> 602-214-5212 Susan Rollins <a href="mailto:serollins52@gmail.com">serollins52@gmail.com</a> 480-563-0411
5	FRIDAY MATINEE MOVIE & LUNCH.	10:00	View interesting movies (including indies, foreign language films, and documentaries) at the Harkins Shea 14, the Harkins 101, or the Camelview. Lunch will follow. Members will be notified by email of the location.	Roni Nassberg <a href="mailto:ronika1@aol.com">ronika1@aol.com</a> 480-488-4476 Abby Tucker <a href="mailto:skyranch52@gmail.com">skyranch52@gmail.com</a> 480-575-3162
8	CONCERTS AND CONVERSATIONS	12:45	Musical performances and discussions Location: Palo Cristi Church at 36th Street and Lincoln. For more info, <a href="#">click HERE</a>	Joan Sitver <a href="mailto:joansitver@aol.com">joansitver@aol.com</a> 602-971-0012
9	SECOND TUESDAY LUNCH BUNCH		Discover new culinary experiences. Everyone is responsible for their own meal. Reply to the facilitator to secure a place at the table. Wait list.	Andrea Morrison <a href="mailto:andsue1@cox.net">andsue1@cox.net</a> 602-840-8195
10 24	KNIT A MITZVAH	1:00	Join us to knit scarves to be donated to a charitable organization. For more information, contact a facilitator.	Ellen Kirschenbaum <a href="mailto:ellenk102@cox.net">ellenk102@cox.net</a> 602-214-5212 Ronee Siegel <a href="mailto:ronees@aol.com">ronees@aol.com</a> 917-273-0393
10	MEN OF BRANDEIS (M.O.B.)	1:00	Guest speaker Blessing McAnlis-Vasquez from the Salt River Community discussing future plans for the SRC. JCC, 12701 N. Scottsdale Rd, Scottsdale 85254.	Leith Baletin <a href="mailto:lbaletin@att.net">lbaletin@att.net</a> 480-874-9434 Sam Summer <a href="mailto:samsummeraz@yahoo.com">samsummeraz@yahoo.com</a> 480-488-1540
11	BOWLING FOR FUN	10:00	This non-competitive bowling group meets at Brunswick Via Linda Lanes followed by lunch. The lanes are located at 9027 E. Via Linda, Scottsdale 85258. For more information, contact a facilitator.	Sheila Landau <a href="mailto:buildor2@cox.net">buildor2@cox.net</a> 480-998-8999 Sue Lawler <a href="mailto:suelawler9@gmail.com">suelawler9@gmail.com</a> 480-502-9036
11	CASUAL EATS * NEW *	12:00	Meet for lunch at "off the beaten path joints" throughout the Valley. Be prepared to divide up equally. Cash may also be required. For more information, contact a facilitator.	Sherry Widman <a href="mailto:widmansherry@gmail.com">widmansherry@gmail.com</a> 847-212-5679 until Dec. 15 Richard Mendelson <a href="mailto:lablv3@comcast.net">lablv3@comcast.net</a> 480-264-6440 after Dec. 15
11	CHEAPEATz <b>FULL</b>	12:00	Lunch at various places around the Valley. Members will be notified by email of the location.	Jay Leopold <a href="mailto:jay@skypower.solar">jay@skypower.solar</a> 480-290-2040
11	STUDY WITH THE BEST – FILM ON FILM	1:30	Explore classic Hollywood films - then join a group discussion. Information regarding how to retrieve the films will be provided. Contact the facilitators for the location.	Carol Kern <a href="mailto:cak571@aol.com">cak571@aol.com</a> 480-948-9236
16	CAMELVIEW REVIEW AND LUNCH	TBA	Enjoy a thought-provoking movie followed by a discussion at a nearby restaurant. For more information, contact a facilitator.	Sheila Landau <a href="mailto:buildor2@cox.net">buildor2@cox.net</a> 480-998-8999 Henriette Hasley <a href="mailto:henriette.hasley@cox.net">henriette.hasley@cox.net</a> 602-494-1924
16	BRIDGING IT!	Noon	Experienced bridge players meet for a fun afternoon of lunch, bridge and camaraderie. For more information, contact a facilitator.	Nan Waldman <a href="mailto:nanlarry@cox.net">nanlarry@cox.net</a> 602-996-5639 Marcy Strauss <a href="mailto:mss29@comcast.net">mss29@comcast.net</a> 612-710-6291
16	AMERICAN JEWISH EXPERIENCE * NEW *	1:00	Explore some historical aspects of American Jewish history that contributed to the cultural identity we have today. 7181 East Camelback Rd, Scottsdale, 85251. For more information, contact a facilitator.	Mark Sendrow <a href="mailto:wmsendrow@gmail.com">wmsendrow@gmail.com</a> 602-307-5420
16	LEARN PICKLEBALL! * NEW * <b>FULL</b>	1:00	Meet for lunch at the Lariat Restaurant located at the Carefree Resort, 37220 N Mule Train Rd, Carefree. After lunch, play for two hours on the resort's Pickleball courts. Paddles and balls provided. \$5 per session. For more information, contact a facilitator.	Abby Tucker and John Poremba <a href="mailto:skyranch52@gmail.com">skyranch52@gmail.com</a> 480-575-3162

FEB	GROUP	TIME	STUDY GROUP NOTES	FACILITATORS
18	BOOKS FOR THE ARMCHAIR TRAVELER <b>FULL</b>	10:00	This group reads books that take place in foreign locales. Details will be emailed to participants.	Nancy Sacks-Goldberg <a href="mailto:nhshobo@aol.com">nhshobo@aol.com</a> 480-661-3852 Barbara Stern <a href="mailto:sternbts@gmail.com">sternbts@gmail.com</a> 540-664-3106
19	CULTURAL SITES IN AZ <b>FULL</b>	TBA	A discussion by John Reyes—"How to be a savvy art collector," and viewing of the show <i>MIRROR MIRROR: Rare Photographs of Frida Kahlo</i> . Bentley Gallery, Warehouse District, Phoenix. For information, contact a facilitator.	Joyce Goldstein <a href="mailto:joyce@goldstein.us">joyce@goldstein.us</a> 480-307-9300 Gladys Simon <a href="mailto:gladsi26@hotmail.com">gladsi26@hotmail.com</a> 480-773-7958
19	STUDIO ART AND BISTRO LUNCH <b>FULL</b>	10:00	Expand your artistic and culinary horizons. Travel with us as we discover artists in their studios and then discuss their works over lunch. Location will be emailed to group members.	Susan Sacks <a href="mailto:susan.sacks@gmail.com">susan.sacks@gmail.com</a> 201-887-0319 Nancy Sacks-Goldberg <a href="mailto:nhshobo@aol.com">nhshobo@aol.com</a> 480-661-3852 Iris Wigal <a href="mailto:wiggley@cox.net">wiggley@cox.net</a> 602-274-8771
19	FRIDAY AFTERNOON BOOK DISCUSSION GROUP	1:00	The group meets in central Phoenix. RSVP to the facilitator for the location.	Ruth Cohen 602-274-6126
22	DISCOVER YOUR CRAFTING TALENTS AT THE CREATING SPOT	10:15	Workshop classes offered by <i>The Creating Spot</i> , a new studio in downtown Scottsdale, at 7127 E. 6th Avenue. No experience needed. Contact the facilitator for more information.	Cheryl Senkfor <a href="mailto:Info@TheCreatingSpot.com">Info@TheCreatingSpot.com</a> 216-272-1697 Bobby Harr 480-272-6004
22	ARIZONA AUTHORS SPEAKER SERIES	12:30	<b>Note: 4<sup>th</sup> Monday this month.</b> Dr. Matthew Whitaker. RSVP to Merrill to assure a seat. JCC, 12701 N. Scottsdale Rd, Scottsdale 85254. For more info, <a href="#">click HERE</a> .	Merrill Kalman <a href="mailto:mskbflo@aol.com">mskbflo@aol.com</a> 480-296-3355
22	BOOMERS	5:00	<i>Jewish Film Festival</i> movie For more information, contact the facilitators at <a href="mailto:brandeisboomers@gmail.com">brandeisboomers@gmail.com</a>	Ronee Siegel <a href="mailto:brandeisboomers@gmail.com">brandeisboomers@gmail.com</a> 917-273-0393 Ellen Kirschenbaum <a href="mailto:ellenk102@cox.net">ellenk102@cox.net</a> 602-214-5212 Susan Rollins <a href="mailto:serollins52@gmail.com">serollins52@gmail.com</a> 480-563-0411
23	GALLERY GIRLS	12:30	Details will be emailed to the participants. For information, contact the facilitator.	Suzie Black <a href="mailto:siblack1@centurylink.net">siblack1@centurylink.net</a> 602-799-3861
23	NEIGHBORHOOD WALKS *NEW*	2:00	A moderately paced walk around one of Phoenix or Scottsdale's many unique neighborhoods. Participants will be notified of the location by email.	Marcy Strauss <a href="mailto:mss29@comcast.net">mss29@comcast.net</a> 612-710-629
24	PHOENIX ART MUSEUM TOURS * NEW * <b>FULL</b>	11:00	Join docent and Brandeis member Mark Sendrow . Museum admission is extra. Details will be emailed to the participants.	Mark Sendrow <a href="mailto:wmsendrow@gmail.com">wmsendrow@gmail.com</a> 602-307-5420
24	FOURTH WEDNESDAY LUNCH BUNCH	11:30	RSVP to a facilitator in order to secure a place at a table. Members will be notified by email of the location.	Annette Kurland <a href="mailto:annettekurland@me.com">annettekurland@me.com</a> 516-236-6271 Lynda Weckstein <a href="mailto:lylweck@gmail.com">lylweck@gmail.com</a> 602-840-8555
24	PLAY GOLF	1:00	All levels are welcome. Each player is responsible for greens fees and lunch costs. RSVPs must be finalized on the Monday prior to the golf date. No refunds of greens fees will be allowed once an RSVP has been given.	Lori Roth <a href="mailto:lori.rothaz@gmail.com">lori.rothaz@gmail.com</a> 480-310-1605 Sue Adatto <a href="mailto:sueadatto@cox.net">sueadatto@cox.net</a> 480-563-0006
25	CONTEMPORARY ISSUES DISCUSSION GROUP #1	9:30	Contact the facilitator for directions to the location. Maximum 25.	Ruth Anne Myers <a href="mailto:ramyers@aol.com">ramyers@aol.com</a> 480-947-8216
25	NEIGHBORHOOD HAUNTS <b>FULL</b>	TBA	Join this group for lunch as they sample four best-kept secret locales. This is a wonderful chance to meet new people in a fun setting! CASH ONLY. Maximum 20 with a waiting list.	Iris Wigal <a href="mailto:wiggley@cox.net">wiggley@cox.net</a> 602-274-8771 Gail Tenn <a href="mailto:gdtenn@hotmail.com">gdtenn@hotmail.com</a> 480-513-8462 Sara Leopold <a href="mailto:sara1225@gmail.com">sara1225@gmail.com</a> 480-359-5599
29	B: PUZZLED NEW MYSTERY & SUSPENSE BOOK GROUP	1:00	<i>The Art Thief</i> by Noah Charney. 18 <sup>0</sup> Restaurant at the Ice Den, 9375 E. Bell Road, Scottsdale 85260. For more information, please contact the facilitators.	Andi Freed <a href="mailto:drcrabberry@gmail.com">drcrabberry@gmail.com</a> Alyce Helfman <a href="mailto:ahelfman2002@yahoo.com">ahelfman2002@yahoo.com</a>



### MEMBERSHIP CONTACTS

To report life-cycle events please contact

Susan Sacks at 480-860-5256 or [susan.sacks@gmail.com](mailto:susan.sacks@gmail.com)

To learn about becoming a member, please contact

Nan Waldman at 602-996-5639 or [nanlarry@cox.net](mailto:nanlarry@cox.net)

## Member News

We send our sincere condolences to Vicki Cabot and her family on the passing of her mother, Estelle Cabot.

Our sincere condolences to the family of life member, Ruth Horenstein.



## Welcome New Members

Jack Belen  
Renee Kaminitz  
Myral Robbins  
Jerry Robbins

## Member to Member

Most of our members find out about the BNC because they are invited to an event by a friend. With so many exciting programs and events coming up in our chapter, why not invite a friend to join you? Share Brandeis, invite your friend to:

- ◆ Attend a Study Group
- ◆ Meet and listen to a Brandeis professor at UOW
- ◆ Experience a cultural event
- ◆ Participate in a community service event



**So bring a friend, neighbor, or family member to your next BNC chapter event, and share Brandeis! [Click HERE](#) to display and print a Membership Form.**

### Membership Co-Vice Presidents

Kathleen Witkin,	<a href="mailto:witkinbnc@gmail.com">witkinbnc@gmail.com</a>	480-473-4825
Leith Baletin,	<a href="mailto:lbaletin@att.net">lbaletin@att.net</a>	480-874-9434



# The BNC Phoenix Chapter 2016 Board Nominations

The BNC Phoenix Chapter Nominations Committee is proud to announce the slate of officers and board members for the coming terms.

Co-Presidents	Nancy Sacks, Iris Wigal
Vice Presidents Study Groups	Susie Sacks, Ronee Siegel
Vice Presidents Membership	Leith Baletin, Nan Waldman
Vice President Programming	Sandy Itkowitz
Vice President Leadership Training	Joellyn Pollock
Vice President Long Range Planning	Sara Leopold
Vice President Fundraising	Lori Roth
Treasurers	Marcia Langer, Harriet Schwartz
Corresponding Secretaries	Dorry Sunenshine, Gail Tenn
Recording Secretaries	Stephanie Altman, Henriette Hasley

## MEMBERS AT LARGE:

Truda Chick, Wendy Cohen, Michelle Fischler, Bruce Galin, Stephane Klopper, Annette Kurland, Sheila Landau, Sue Lawler, Beth Messer, Brina Pepper, Barbara Stern, Jo Ellen Susman, Terry Taubman, Abby Tucker, Kathleen Witkin

Respectfully submitted by the Nominating Committee:

Lori Roth and Marcy Strauss, Co-Chairs

Andie Morrison, Susie Sacks, Gladys Simon, Jo Ellen Susman, Nan Waldman, Iris Wigal



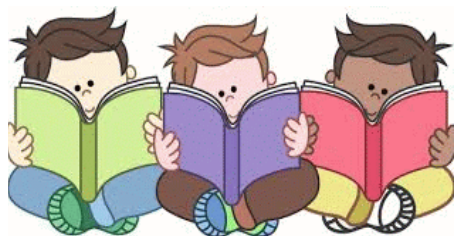
## Chapter Roster

If you have recently moved, or changed your phone number or email address, please let Bruce Galin, our Chapter's Data Manager, know of those changes. [bruce.phxbnc@gmail.com](mailto:bruce.phxbnc@gmail.com). This will ensure you don't miss out on any Chapter mailings and information.

## Chapter Membership Roster Available

The chapter membership roster is now available online by request. You must have an email address for us to provide secure access. Please send your request to Bruce Galin at [bruce.phxbnc@gmail.com](mailto:bruce.phxbnc@gmail.com). You will be notified when your access is available.

# Social Justice



## Carol B' s Children' s Book Collection

In December, Carol B's Children's Book Collection delivered 1000 books, twice as many as the previous year! They were divided between two elementary schools with a total of 1250 students. Collections of new and gently used books for local elementary schools are continuing. We thank everyone for their support and hard work!

For more information, please contact:

Dorry Sunenshine

[dsunenshine@gmail.com](mailto:dsunenshine@gmail.com)

Ellen Kirschenbaum [ellenk102@cox.net](mailto:ellenk102@cox.net)

*"A book is like a garden,  
carried in the pocket."  
-- Chinese Proverb*



## Just 3 Things

Jewish Family and Children's Services (JFCS)  
*Real World Job Development*  
and *Youth In Transition* programs.

Help JFCS stock the **Just 3 Things** food pantry by donating non-perishable food items to provide a needy youth with food as they transition from foster care to independence.

Please visit the website for recommended items.

<http://www.jfcsaz.org/>

We will collect food items at our Board meetings and several Chapter events.

Julie Bronstein

Ellen Kirschenbaum

[ellenk102@cox.net](mailto:ellenk102@cox.net)



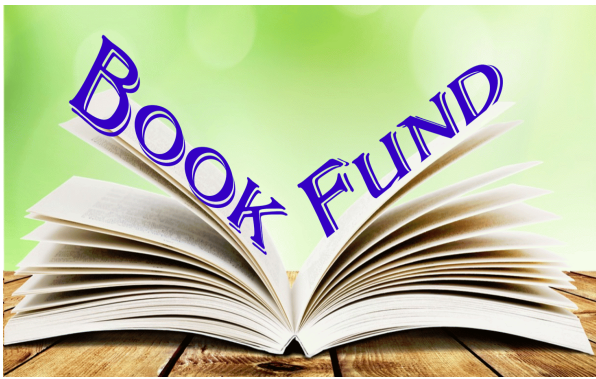
## Volunteers Needed

A wonderful way to get involved with our local BNC Chapter is to share your expertise with us. It's a win-win! You get to meet some of the other members, maintain your skills and learn new ones, and the Chapter benefits from your experience.

The current skill sets needed are:

**SOCIAL MEDIA, WEBSITE, MARKETING, PUBLICITY**

If you would like to volunteer in these or any other areas, contact Kathleen Witkin at [witkinbnc@gmail.com](mailto:witkinbnc@gmail.com) 480-473-4825



For all your Book Fund needs, contact:  
Henriette Hasley, 11844 N. 40<sup>th</sup> Pl Phoenix, AZ 85028  
602-494-1924 [henriette.hasley@cox.net](mailto:henriette.hasley@cox.net)

We accept credit card donations for  
orders of \$10.50 or more.

For a donation form, [Click HERE](#)

Donor	Recipient	Occasion
<b>Learned Research Journal</b>		
BNC Phoenix Board	Dr. Tom Doherty	In appreciation of informative University on Wheels presentation on January 8, 2016
Brandeis Friday Mah Jongg Group	Carol Abrams & Family	In memory of Carol's father, George Louis
<b>Special Tribute Card</b>		
Carol & Allan Kern	Roz Fischer	Get well wishes
Sheila & Jay Cohen Helene & Herb Isaacs Carol & Allan Kern	Carol Abrams & Family	In memory of Carol's father, George Louis
Ruth Anne Myers	Ellen Tuckman & Family	In memory of Ellen's mother, Jean Shulman
<b>Louis Brandeis Card</b>		
Carol & Chuck Abrams BNC Phoenix Board Nan & Larry Waldman	Ellen & Bob Kirschenbaum	In honor of the birth of your new grandson, Jacob "Jake" Samuel
Carol Abrams BNC Phoenix Board Nancy Moffitt Iris Wigal	Roz Fischer	Get well wishes
Ellen Kirschenbaum	Bruce Galin	Best wishes for a speedy recovery
Beth Messer Nancy Moffitt	Carol Abrams & Family	In memory of Carol's father, George Louis
Nan & Larry Waldman	Cindie Gittelman	In memory of Cindie's father
Carol & Chuck Abrams BNC Phoenix Board	Ronda Kottle & Family	In memory of Ronda's mother, Julia Friedlander
Sharon & Lou Gadless Nancy Moffitt	The Family of Naomi Schwartz Ellen Tuckman & Family	In memory of Naomi Schwartz In memory of Ellen's mother, Jean Shulman
<b>Millionth Book Card</b>		
Joan Sheff Elaine Wagner	Ellen Tuckman & Family	In memory of Ellen's mother, Jean Shulman

**DID YOU KNOW - You can establish a Book Fund savings account?**  
**The account allows you to send Book Fund Tributes with ease.**

For more information contact: Henriette Hasley:  
11844 N. 40th Place, Phoenix, AZ 85028 602-494-1924 [henriette.hasley@cox.net](mailto:henriette.hasley@cox.net)



## BNC Scholarship Campaign Donations - JANUARY

Carol and Allan Kern to Sue Karp  
In honor of Emerging Leadership Award Recipient

Carol and Allen Kern to Kathleen Witkin  
In honor of Emerging Leadership Award Recipient

## Donations DECEMBER

**Sustaining the Mind:  
Scientific Research and  
Scholarship in  
Neurodegenerative  
Diseases**

To support the Sustaining the Mind Fund, contact Ronda Kottle  
[ronda@kottlehome.com](mailto:ronda@kottlehome.com) For a donation form, [Click HERE](#)



Did you know that all Chapter Board meetings are open to our members? You are welcome to join us the third Wednesday of every month (except for our July hiatus) at 10:30 am. We generally meet at the McDowell Center at McDowell Mt. Ranch in Scottsdale.

If you are interested in attending, email: President, Carol Abrams:  
[bncphxprez@gmail.com](mailto:bncphxprez@gmail.com) to let her know you are coming and for driving directions.



## BNC PHOENIX BOARD AND COMMITTEE CALENDAR

### FEBRUARY

- 1 Programming Committee
- 3 Executive Committee
- 17 Open Meeting ([See page 6](#) for details.)
- 22 Membership Committee



Since our earliest days, the Brandeis National Committee has stood as a resolute partner with the University.

Today, increasing funding for scholarship assistance for our students is the University's top priority. Consider that:

- Two out of three Brandeis students receives some form of financial aid. In the 2013-14 academic year, Brandeis awarded \$88.4 million in scholarship aid (undergraduates and graduate students).
- For the same period, the endowment and annual gifts designated to scholarships provided \$17.2 million (19.4% of the total financial aid budget).

Financial assistance plays a pivotal role in upholding Brandeis' founding principle of equal access to higher education, regardless of a student's financial circumstance. Scholarships ensure that the best and brightest students are able to pursue an education at this unique institution.

Brandeis is committed to ensuring that it meets the financial needs of its students. Endowed scholarship funds, which provide a consistent, dependable funding source, are required to accomplish this.

**To support the BNC Scholarship campaign, contact  
Ronda Kottle, [ronda@kottlehome.com](mailto:ronda@kottlehome.com)**

For a Scholarship donation form, [Click HERE](#).

# *Brandeis names Ronald Liebowitz as its ninth president Will begin his leadership role on July 1, 2016*

Brandeis University's Board of Trustees today announced that Ronald D. Liebowitz has been named the ninth president of Brandeis University.

The former president of Middlebury College, in Middlebury, Vermont, Liebowitz will begin his leadership role at Brandeis on July 1, 2016.

"We are thrilled to welcome Ron Liebowitz to our community," said Perry M. Traquina '78, chair of Brandeis' Board of Trustees. "He is a proven visionary and leader who helped a great institution scale even greater heights and deftly managed it through challenging times. Brandeis will benefit so much from his exceptional experience and passion."

"I am deeply honored to have this opportunity to lead Brandeis," said Liebowitz. "The university's founding, based on the premise of offering an education to those who had been excluded from the finest universities, is inspiring. Its commitment to social justice, as espoused by its namesake,

represents a precious compass for an institution of higher education in the 21st century. And its Jewish heritage and roots reflect a learning environment committed not only to critical thinking but to self-criticism as well. I am excited to work with Brandeis faculty, staff and students to advance Brandeis so it can be a model for teaching, learning and research that befits its history and our times."

Liebowitz, 58, enjoyed a 31-year career on the Middlebury faculty as a professor of geography, including seven years as provost. He served as president for 11 years, from 2004 until June 2015.

In 2009, *Time* magazine named Liebowitz one of the ten best U.S. college presidents.

Liebowitz will succeed Lisa M. Lynch, the Maurice B. Hexter Professor of Social and Economic Policy, who has served as Brandeis' interim president since July 2015. At the end of June 2016, she will return to her previous role, serving as provost and chief academic

officer at the university.

"I am extremely pleased that Ron has been selected to lead Brandeis," said Lynch. "He has deep experience in recruiting and supporting exceptional faculty, which is so fundamental to the distinctive educational experience we offer our undergraduate and graduate students, and to our extraordinary scholarly and artistic contributions."

The naming of Liebowitz as president concludes a search that began in spring 2015, with the support of executive-search consulting firm Spencer Stuart.

"Brandeis is very fortunate that Ron will join us as our next president," said Robin Feuer Miller, the Edytha Macy Gross Professor of Humanities and a member of the search committee. "He fully understands the special mission of Brandeis as a research university and a liberal arts college, and he has a deep knowledge of the challenges facing higher education today. He is an innovator with a powerful appreciation

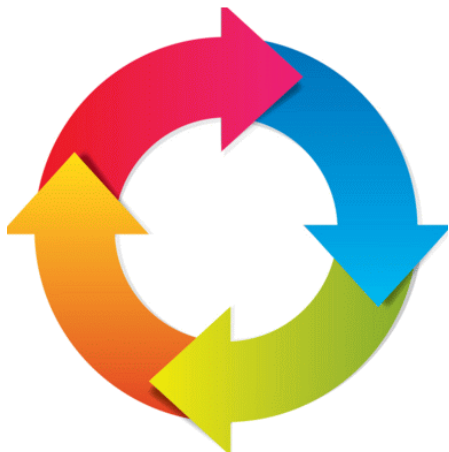
for the traditional values of liberal arts education. How lucky we are that he will bring his ideas and energy to Brandeis."

Liebowitz is a political geographer who specializes in Russian economic and political geography. A native of New York City, he earned a BA in Economics and Geography from Bucknell University and a PhD in Geography from Columbia University.

He is on sabbatical this year, working on a research project with his wife, Jessica. Their research focuses on the future of doctoral education, assessing both its far-reaching impact on education at all levels and its illumination of the deepest challenges facing higher education today. At Brandeis, Jessica will focus on engaging, highlighting and sharing the dynamic intellectual and creative life of the campus, just as she did at Middlebury during her husband's presidency. Ron, Jessica and their three children will remain in their home in Newton, Massachusetts.







# Save the Dates!

**Wednesday, February 17, 2016**  
**ANNUAL MEETING IN CELEBRATION**  
**OF OUR MEMBERS**

**March 13, 2016**  
**BOOKMARK DONORS COCKTAIL RECEPTION**

**March 14, 2016**  
**26<sup>TH</sup> ANNUAL BOOK & AUTHOR LUNCHEON**  
**Marriott Desert Ridge Resort**

**April 8, 2016**  
**NEW MEMBER COFFEE**

**April 13, 2016**  
**WOMEN'S SEDER AT THE JCC**

**Wednesday, April 20, 2016**  
**SPRING LUNCHEON**

## Mission Statement

Brandeis National Committee is dedicated to providing philanthropic support to Brandeis University, a distinguished liberal arts and research university founded by the American Jewish community. Its membership is connected to the University through fundraising and through activities that reflect the values on which the University was founded: academic excellence, social justice, nonsectarianism and service to the community.

## We Value Your Privacy

All directories, phone numbers and email addresses shared with our members for the use of Brandeis business shall remain confidential and not be shared with other organizations





# BNC PHOENIX CHAPTER BOARD MEMBERS

## 2015 / 2016

Carol Abrams, President	<a href="mailto:abrams.carol@gmail.com">abrams.carol@gmail.com</a> 480-948-1717
Stephanie Altman, Co-Recording Secretary	<a href="mailto:steffiyaltman@gmail.com">steffiyaltman@gmail.com</a> 314-724-3174
Leith Baletin, Membership Vice President, Men of Brandeis Liaison	<a href="mailto:lbaletin@att.net">lbaletin@att.net</a> 480-874-9434
Julie Bronstein, Member at Large	<a href="mailto:thefunnygirl@gmail.com">thefunnygirl@gmail.com</a> 480-797-5691
Truda Chick, Member at Large	<a href="mailto:tchick2@cox.net">tchick2@cox.net</a> 480-686-8747
Paula Eckstein, Electronic Communications Officer	<a href="mailto:paula.eckstein@gmail.com">paula.eckstein@gmail.com</a> 480-544-7570
Arlene Feldman, Administrator	<a href="mailto:agfeldman1@cox.net">agfeldman1@cox.net</a> 480-227-6303
Bruce Galin, Co-Treasurer	<a href="mailto:bruce.phxbnc@gmail.com">bruce.phxbnc@gmail.com</a> 480-661-0842
Henriette Hasley, Book Fund Chair	<a href="mailto:henriette.hasley@cox.net">henriette.hasley@cox.net</a> 602-494-1924
Merrill Kalman, Study Group Vice President	<a href="mailto:mskbflo@aol.com">mskbflo@aol.com</a> 480-296-3355
Sue Karp, Long-Range Planning Chair	<a href="mailto:suekarp1@me.com">suekarp1@me.com</a> 480-451-9511
Carol Kern, Senior Advisor, Historian	<a href="mailto:CAK571@aol.com">CAK571@aol.com</a> 480-948-9236
Irene Kestenbaum, Sun Lakes Liaison	<a href="mailto:irenek0426@gmail.com">irenek0426@gmail.com</a> 480-883-7639
Ellen Kirschenbaum, Social Justice Co-Chair	<a href="mailto:ellenk102@cox.net">ellenk102@cox.net</a> 602-214-5212
Ronda Kottle, Campaign Donations Officer	<a href="mailto:ronda@kottlehome.com">ronda@kottlehome.com</a> 602-327-0266
Annette Kurland, Member at Large	<a href="mailto:annetekurland@me.com">annetekurland@me.com</a> 480-636-1728
Sheila Landau, Programming Vice President	<a href="mailto:buildor2@cox.net">buildor2@cox.net</a> 480-998-8999
Marcia Langer, Co-Recording Secretary	<a href="mailto:marciala@msn.com">marciala@msn.com</a> 914-943-7804
Sue Lawler, Member at Large	<a href="mailto:suelawler9@gmail.com">suelawler9@gmail.com</a> 480-502-9036
Sara Leopold, Study Group Vice President, Book & Author Co-Chair	<a href="mailto:sara1225@gmail.com">sara1225@gmail.com</a> 480-525-1575
Judy Levine, Leadership Development Vice President	<a href="mailto:JudithLevine43@yahoo.com">JudithLevine43@yahoo.com</a> 480-496-0252
Janis Lipman, Member at Large	<a href="mailto:janislipman@gmail.com">janislipman@gmail.com</a> 203-216-0177
Irene Lubin, Financial Secretary	<a href="mailto:iwlubin1@cox.net">iwlubin1@cox.net</a> 480-948-3773
Beth Messer, Member at Large	<a href="mailto:bethmae721@gmail.com">bethmae721@gmail.com</a> 480-284-5555
Brina Pepper, Boutiques Chair	<a href="mailto:brina@homesbypepper.com">brina@homesbypepper.com</a> 480-483-7875
Lori Roth, Immediate Past President, Nominating Committee Co-Chair	<a href="mailto:lori.rothaz@gmail.com">lori.rothaz@gmail.com</a> 480-664-3312
Nancy Sacks-Goldberg, Summer Activities Chair	<a href="mailto:nhshobo@aol.com">nhshobo@aol.com</a> 480-661-3852
Susan Sacks, Member at Large	<a href="mailto:susan.sacks@gmail.com">susan.sacks@gmail.com</a> 480-860-5256
Harriet Schwartz, Co-Treasurer	<a href="mailto:harriet0715@gmail.com">harriet0715@gmail.com</a> 602-862-0528
Mark Sendrow, Publicity Chair	<a href="mailto:wmsendrow@gmail.com">wmsendrow@gmail.com</a> 602-307-5420
Ronee Siegel, Study Group Vice President	<a href="mailto:ronees@aol.com">ronees@aol.com</a> 602-494-9168
Gladys Simon, Advisor	<a href="mailto:gladsi26@hotmail.com">gladsi26@hotmail.com</a> 480-773-7958
Barbara Stern, Parliamentarian	<a href="mailto:sternbts@gmail.com">sternbts@gmail.com</a> 540-664-3106
Phyllis Stone, Member at Large	<a href="mailto:mommystone@aol.com">mommystone@aol.com</a> 602-451-6428
Marcy Strauss, Immediate Past President, Nominating Committee Co-Chair, Book & Author Co-Chair	<a href="mailto:mss29@comcast.net">mss29@comcast.net</a> 612-710-6291
Dorry Sunenshine, Corresponding Secretary, Social Justice Co-Chair	<a href="mailto:dsunenshine@gmail.com">dsunenshine@gmail.com</a> 480-275-2226
Jo Ellen Susman, Programming Vice President	<a href="mailto:joellensus@gmail.com">joellensus@gmail.com</a> 480-502-6881
Gail Tenn, Corresponding Secretary	<a href="mailto:gdtenn@hotmail.com">gdtenn@hotmail.com</a> 480-513-8462
Iris Wigal, Administrator	<a href="mailto:wiggley@cox.net">wiggley@cox.net</a> 602-274-8771
Kathleen Witkin, Membership Vice President, Bulletin Editor	<a href="mailto:witkinbnc@gmail.com">witkinbnc@gmail.com</a> 480-473-4825