

Lamorinda School Bus Transportation Agency
Regular Meeting AGENDA
DATE: May 9, 2016 TIME: 9:30 a.m.
City of Lafayette, 3675 Mt. Diablo Blvd., Lafayette CA
Conference Room 240 (Second Floor)

* Parent liaisons - please meet at 8:50 a.m. prior to the official board meeting

- 1) CALL TO ORDER
- 2) ADOPTION OF AGENDA
- 3) PUBLIC COMMENT – items not on the agenda
- 4) ADOPTION OF MINUTES – April 25, 2016
- 5) NEW BUSINESS

A. Adding One Additional Bus Serving Campolindo High School, JMIS and Rheem

Recommendation: Approve one additional bus for Campolindo High School serving Lafayette and Moraga students; reconfigure the Moraga routes; direct staff to develop Moraga bus schedules for distribution in late May.

- 6) LATE BUS REPORTS
- 7) CHAIR AND BOARD MEMBERS' REPORTS
- 8) WRITTEN COMMUNICATIONS
- 9) NEXT MEETING DATE
- 10) ADJOURNMENT

I, Juliet Hansen, declare under penalty of perjury, that this agenda has been posted at least 72 hours in advance in the following locations: City of Lafayette Offices, 3675 Mt. Diablo Blvd., in the glass case downstairs, Lafayette, CA.

Juliet Hansen, Program Manager

*Any writings or documents pertaining to an open session item provided to a majority of the LSBTA less than 72 hours prior to the meeting shall be made available for public inspection at the Lamorinda School Bus Program office at 3675 Mt. Diablo Blvd., Suite 255, Lafayette CA during normal business hours. Agendas and packets are available for review by the public during regular Monday – Friday work hours at the Lamorinda School Bus Program office at 3675 Mt. Diablo Blvd., Suite 255, Lafayette CA and on the website at www.lamorindaschoolbus.org Agendas and packets shall be made available at least 72 hours in advance of each meeting. Upon request this agenda will be made available in appropriate alternative formats to persons with disabilities, as required by Section 202 of the ADA Act of 1990 (42 U.S.D. Sec. 12132). Any person with a disability who requires a modification or accommodation in order to participate in a meeting should direct such request to Juliet Hansen, Program Manager, at 925-299-3216 at least 48 hours before the meeting if possible.

Lamorinda School Bus Transportation Agency

MINUTES

City of Lafayette Offices
3675 Mt. Diablo Blvd.,
Lafayette, CA 94549

Date: April 25, 2016
Time: 9:30 a.m.

Present: Chair Tatzin, Vice Chair Metcalf, Board Members, Kendzierski and Worth.

Absent: Board Members, Gerson, Moran and O'Donnell.

Also Present: Gary Hein, Henry Cooper and Susan Moorehead, First Student; Juliet Hansen and Sue Graves, LSBP Staff.

1. Call to Order: The meeting was called to order at 9:40 a.m.
2. Adoption of Agenda: The agenda was adopted as presented, M/S/C/U (Kendzierski/Metcalf).
3. Public Comment: None
4. Approval of Minutes: The minutes of February 22, 2016 were approved as written, M/S/C/U (Metcalf/ Kendzierski)
5. Old Business

A. Update on Driver Shortage and Operations from First Student

Mr. Cooper updated the Board that it continues to be a challenge to provide enough drivers. Currently there is a driver on each route in the program. A new class for drivers started today and there will be a new class each month through the summer. The program will continue to have two drivers from LA until the end of the school year. The availability of a CHP officer for testing continues to be a problem.

B. Update on In Lieu Policy

LSBP staff updated the Board on the implementation of In Lien Policy. So far 4 routes have reached the 4 missed runs threshold. An email was sent to the parents on each of these routes stating the new policy. The response rate was approximately 21%.

C. Update on Orinda Routes

Ms. Moorehead presented the results of a First Student evaluation of several of the Orinda routes. A discussion was held on the need for signage, clearing of shrubbery and combining of stops along routes. Board Member Worth stated that she could meet with Mr. Hein and the Orinda Public Works Director to go over the need for paving, signage and clearing of vegetation.

6. New Business

A. Adopt Budget for FY 2016-17 and Five Year Financial Plan

Ms. Hansen presented the budget for the FY 2016-17 to the Board. She informed the Board that due to the increase in the fund balance it would be possible to add an additional bus to the program starting with the 2016-2017 school year. Chair Tatzin stated that the Measure J reauthorization would also provide funding for additional buses. The Board requested that staff return to the Board with recommendations for additional service

There M/S/C/U (Worth/Metcalf) to approve the staff recommendation as follows:

1. Approve Proposed Budget for FY 2016-17 and Five Year Plan; Forward to CCTA;
2. Increase Parent Contributions by 2.5% in FY 2016-17 (with a \$25.00 discount per student if signing up by the early bird deadline of July 8, 2016);
3. Provide Direction to Staff re: Adding One Additional Bus for FY 16-17 and Beyond;
4. Adopt Resolution 16-1 re: Transfer Fees to City of Lafayette.

7. Late Bus Report

Vice Chair Metcalf asked First Student about the number of late buses due to dead batteries. Mr. Cooper responded that it appears to be driver error that is causing the dead battery issue.

8. Chair's Report: none

9. Board Members Report: none

10. Written Communications: none

11. Next Meeting Date: May 9, 2016 at 9:30 a.m.

12. Adjournment: The meeting was adjourned at 11:00 a.m.

Respectfully Submitted,

Sue Graves, Administrative Aide

LSBTA Meeting
May 9, 2016
Staff Report

Lamorinda School Bus Program
Staff Report

Today's Date: May 5, 2016
To: Lamorinda School Bus Transportation Agency
From: Juliet Hansen, Program Manager
Re: Adding One Additional Bus Serving Campolindo High School, JMIS and Rheem

Background

At its last meeting on April 25, 2016, the LSBTA adopted a budget which included funds in the contingency line item for running one additional bus for the next five years. Staff was directed to develop options for where to best place this bus. Staff was also asked to review the LSBTA's "wish list" of buses should another Measure J Bond Measure pass.

Discussion

The LSBTA's original "wish list" is attached and includes new service to Campolindo. Many board members have expressed interest in a Campolindo bus serving Lafayette and Moraga students as the traffic on Moraga Rd. near the high school is very heavy in the a.m. The AUHSD is in the process of providing a map of Campolindo students living in Lafayette in order to develop a route. As this would be a.m. only service dropping off at Campolindo at approximately 7:45 a.m., there is an opportunity to pair it with other schools.

The Moraga School District has just approved changing bell times for JMIS as its 7:50 a.m. start time is so early. A later bell time has many benefits for JMIS students. The MSD prefers to start JMIS closer to 8:30 a.m. The MSD has approved transporting elementary and middle school students together on the same bus since the routes are similar. However, transporting all students together with the current configuration of buses will result in an overload of 43 students. *To alleviate this overload, LSBTA staff recommends pairing a new Campolindo a.m. bus with JMIS and Rheem and reconfiguring the other Moraga bus routes.*

Reconfiguration of Moraga Buses

In consultation with the JMIS principal, Joan Danilson, and the MSD Superintendent, Bruce Burns, LSBTA staff has reconfigured the Moraga bus routes in order to accommodate all grades of students and the new bell times. Please refer to the route maps attached.

NEW Route 1 - JMIS and Los Perales
Fernwood, Carter (St. Mary's Gardens) and Alta Mesa

NEW Route 2 - JMIS and Los Perales
Camino Ricardo, Corliss, Ivy Dr. (Miramonte Gardens), St. Andrews (Moraga Country Club)

NEW Route 3 - JMIS and Rheem
Bollinger Canyon, Donald/Derby, Devin and Chalda

NEW Route 4 - JMIS and Rheem
Campolindo and Francisca at Josefa

NEW Route 5 – CAMPOLINDO

St. Mary's Rd., Rheem Blvd., Fernwood, Donald, Derby and Draeger (stops TBD)

NEW Route 5 - JMIS and Rheem

Woodford, Natalie Rheem Blvd., Scofield and Moraga Rd. at Ascot

AM and PM Details

Details below are based on JMIS start time of 8:30 a.m. and release time of 3:04 p.m.

AM

- Routes start 7:45 - 7:55 a.m.; pick up JMIS and elementary students together
- Drop off elementary 8:10 a.m. (8:25 bell)
- Drop off JMIS 8:20 (8:30 bell)

PM

- Arrive JMIS (3:04 p.m. bell), leave JMIS 3:11 p.m.
- Arrive elementary 3:20 p.m. (3:05 bell)
- 1st bus stop 3:15 – 3:20
- Last bus stop 3:40 - 3:50 p.m.

Summary of Impacts

Adding one additional bus and reconfiguring the Moraga bus routes has the following impacts:

Pros

- More cars removed from Moraga Rd. during a.m. peak hour traffic (Campo Route 5 can transport 52 students)
- New Campo Route 5 bus serves both the Lafayette and Moraga communities
- New Campo Route 5 bus has potential to bring in \$15,000 in parent fees
- JMIS Moraga Rd. at Ascot students travel together instead of being split on two buses
- NEW service for JMIS 2 students on St. Andrews/Augusta (Country Club neighborhood)
- All routes have availability for new students
- Some bus stops have been consolidated for better efficiency

Cons

- Most MSD students will have longer ride times in the afternoon (+10 min)
- In p.m., elementary bus riders will wait at school for JMIS bus to arrive (3:20 p.m. arrival)
- No a.m. late bird service for 9:25 a.m. bell, Los Perales and Rheem (6 a.m. students next year)
- No p.m. service, JMIS 14, Sanders Ranch (5 p.m. students next year)

Options

The Moraga School District has already approved bell time changes for JMIS. Without the additional bus for Campolindo and subsequent reconfiguration of Moraga routes, the Moraga bus system will have a wait list of approximately 43 round trip students and a loss of \$20,000 in parent fees.

Recommendation

Approve one additional bus for Campolindo High School serving Lafayette and Moraga students; reconfigure the Moraga routes; direct staff to develop Moraga bus schedules for distribution in late May.

Lamorinda School Bus Program
Staff Report

Date: February 2, 2015
To: Lamorinda School Bus Transportation Agency
From: Juliet Hansen, Program Manager
Re: Request for Additional Projects (Measure J)

Background

There may be more funds available in the future to support service expansion for the Lamorinda School Bus Program. The LSBTA has requested staff to identify areas in need of more service, with priorities for areas with the greatest potential for reducing traffic congestion. Given the combination of full buses, new housing developments and projections for increases in school enrollment, staff recommends the addition of six buses.

Orinda

- Orinda Intermediate School (OIS) currently has ten buses and is well-served by the school bus program. However, three of the OIS buses north of the freeway are full. (Routes 11, 12 and 18). Staff recommends one additional OIS bus for this area which could share a run with either Miramonte High School or Del Rey Elementary. OIS, Miramonte and Del Rey are located off of Moraga Way which is heavily congested during the morning commute.

Lafayette

- Stanley Middle School is served by four school buses. Two of the Stanley buses are full (Routes 22 and 23). Both routes help to alleviate traffic on Pleasant Hill Rd. and Mt. Diablo Blvd. and Moraga Rd. These routes will be impacted by two new developments, The Marquis Townhomes and The Terraces. Staff recommends one additional bus for this area.
- Stanley has no service on the west end of town. New developments are coming to Woodbury Condominiums on Mt. Diablo @ Risa Rd. and Town Center III on Mt. Diablo at Dewing Ave. An additional bus to Stanley would alleviate traffic on Mt. Diablo Blvd. at Moraga Rd. Staff recommends one bus for this area.
- Lafayette Elementary is located on Moraga Rd. which is heavily congested, but has no school bus service. Staff recommends one bus for Lafayette Elementary.
- Staff continually has requests for bus service on Happy Valley Rd. Staff recommends one bus for Stanley Middle School students in this area. Since the Stanley bus would remove vehicular traffic from the very busy intersection Mt. Diablo Blvd. at Moraga Rd., staff would prioritize a Stanley bus over an elementary bus.

Moraga

- Campolindo High School currently has one school bus. The bus is full and has been well-utilized since its inception. The Campolindo bus helps alleviate traffic on Moraga Rd. which is heavily congested during the morning commute. The last time we surveyed, there was additional demand for a Campolindo bus, particularly for students commuting from Lafayette neighborhoods. Staff recommends one additional bus for students at Campolindo.

School Surveys

Nelson Nygaard, a transportation consulting firm from San Francisco, is in the process of conducting a transit study in lamorinda. As a part of the study, the firm would like to survey parents at lamorinda schools to gauge interest and demand for additional school bus service. Staff recommends a targeted survey for OIS, Miramonte, Del Rey Elementary, Stanley, Lafayette Elementary and Campolindo High School.

Summary

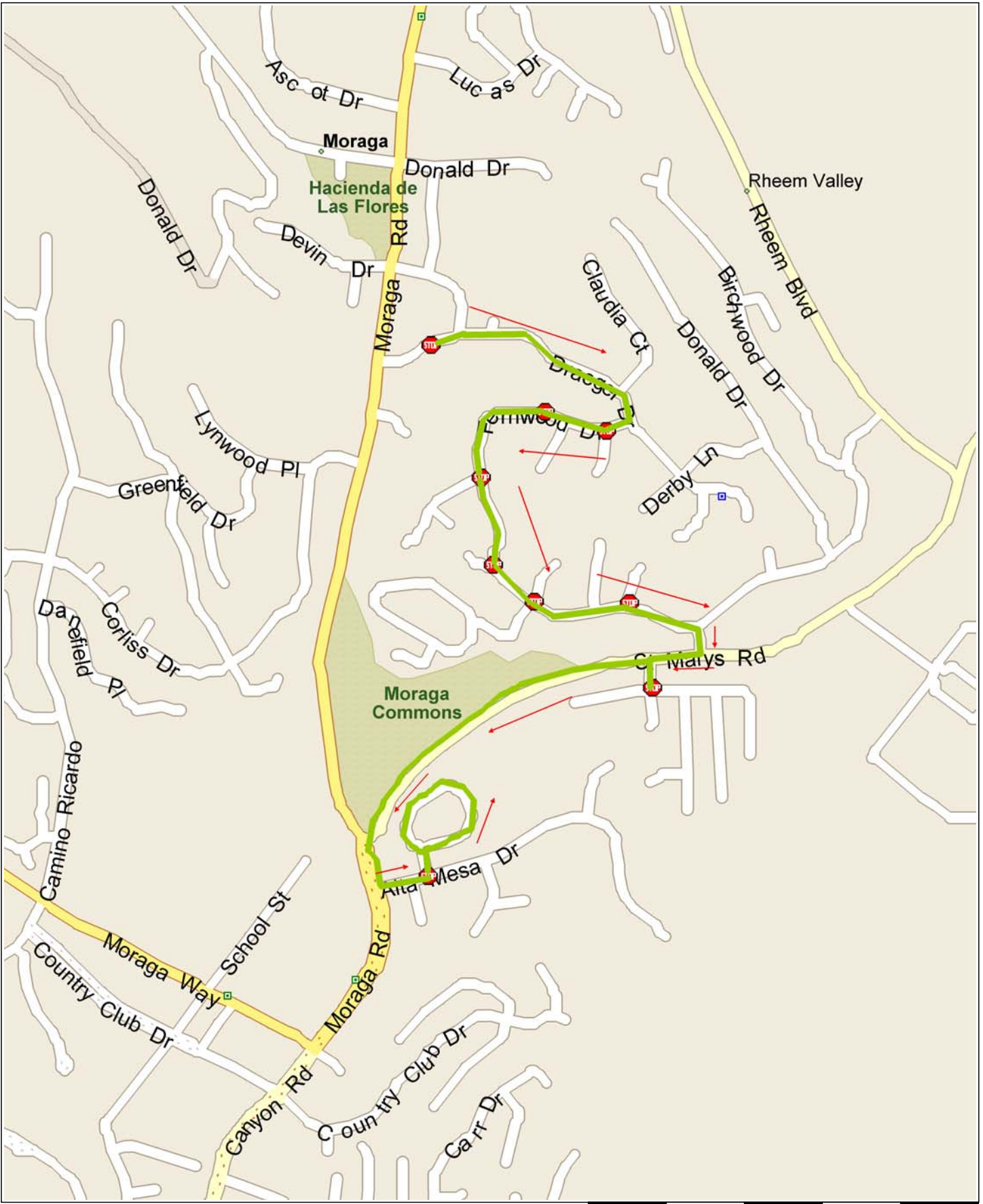
There may be more funds available in the future to support service expansion for the Lamorinda School Bus Program. With the combination of full buses, new housing developments and projections for increases in school enrollment, staff recommends the addition of six buses. Nelson Nygaard is in the process of selecting schools to survey to evaluate demand for additional service. Staff recommends surveying OIS, Miramonte, Del Rey Elementary, Stanley, Lafayette Elementary and Campolindo.

Recommendation

Discuss and direct staff.

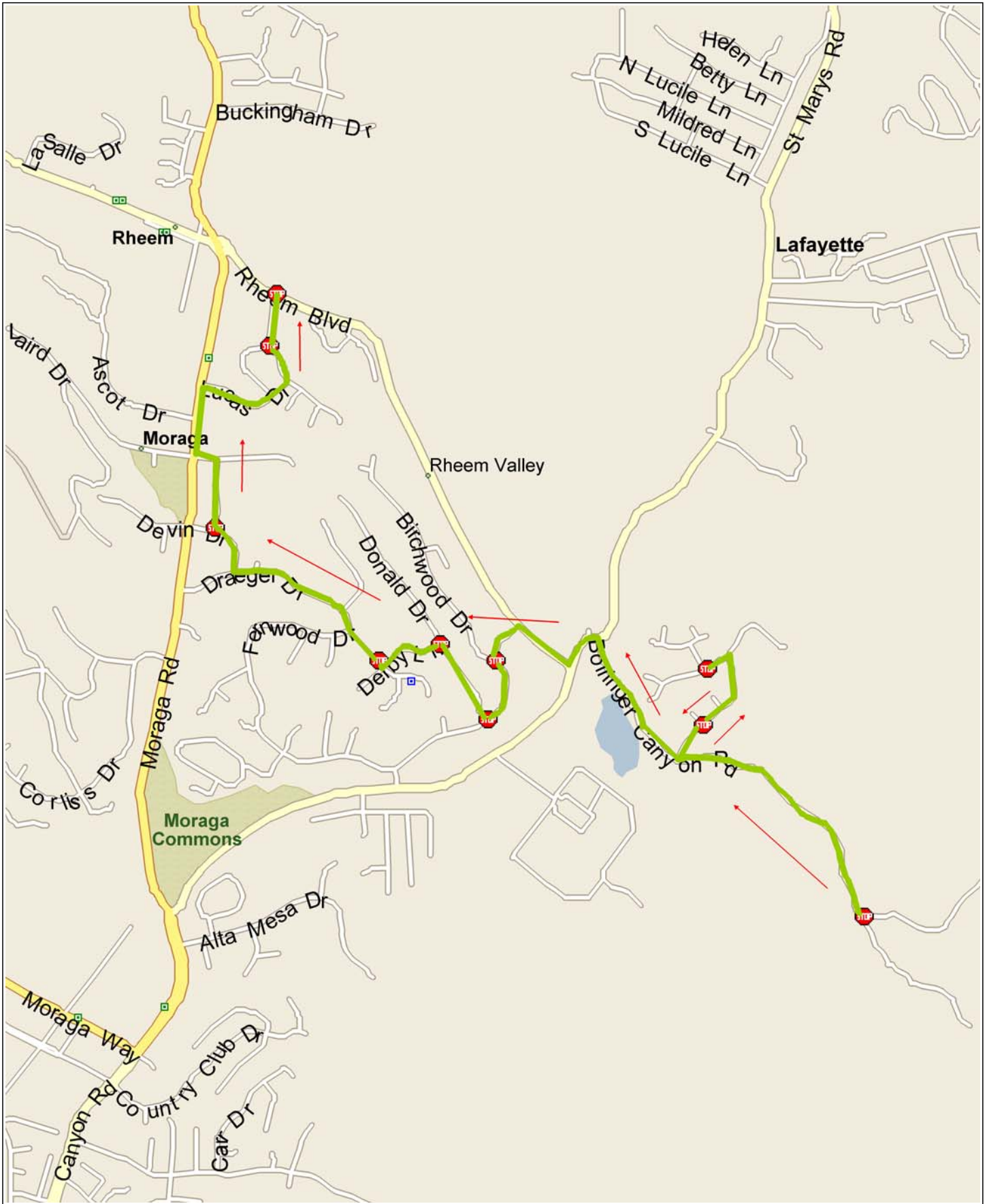
Attachment: Lamorinda Weekly article by Cathy Tyson "School Enrollments are Growing"

NEW JM & LP Route 1 (AM)



Copyright © and (P) 1988–2007 Microsoft Corporation and/or its suppliers. All rights reserved. <http://www.microsoft.com/streets/>
Certain mapping and direction data © 2007 NAVTEQ. All rights reserved. The Data for areas of Canada includes information taken with permission from Canadian authorities, including: © Her Majesty the Queen in Right of Canada, © Queen's Printer for Ontario. NAVTEQ and NAVTEQ ON BOARD are trademarks of NAVTEQ. © 2007 Tele Atlas North America, Inc. All rights reserved. Tele Atlas and Tele Atlas North America are trademarks of Tele Atlas, Inc.

NEW JM & RH Route 3 (AM)



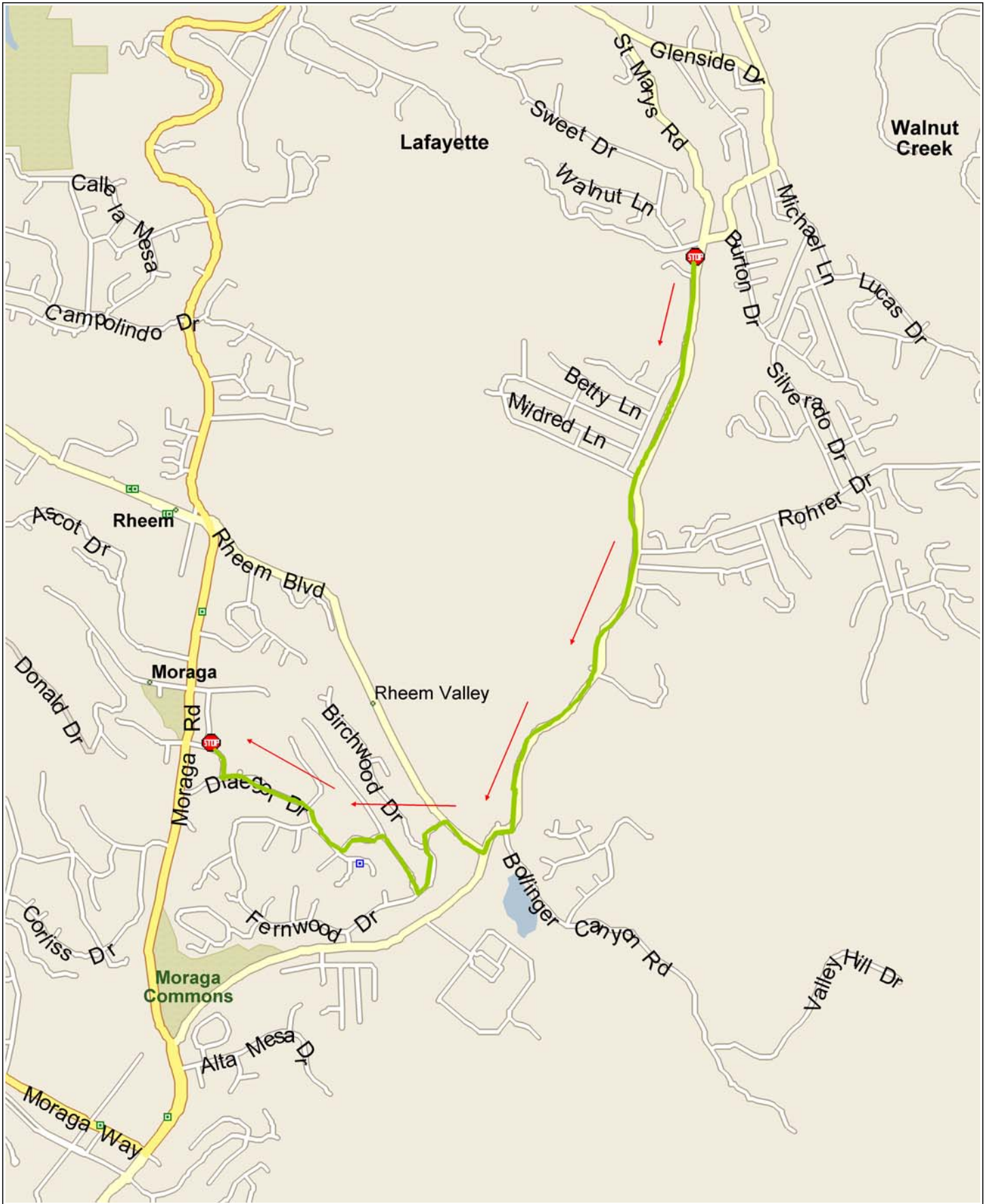
0 mi 0.2 0.4 0.6 0.8

Copyright © and (P) 1988–2007 Microsoft Corporation and/or its suppliers. All rights reserved. <http://www.microsoft.com/streets/>
Certain mapping and direction data © 2007 NAVTEQ. All rights reserved. The Data for areas of Canada includes information taken with permission from Canadian authorities, including: © Her Majesty the Queen in Right of Canada, © Queen's Printer for Ontario. NAVTEQ and NAVTEQ ON BOARD are trademarks of NAVTEQ. © 2007 Tele Atlas North America, Inc. All rights reserved. Tele Atlas and Tele Atlas North America are trademarks of Tele Atlas, Inc.

NEW JM & RH Route 4 (AM)



NEW CAMPO Route 5 (AM)



NEW JM & RH Route 5 (AM)

