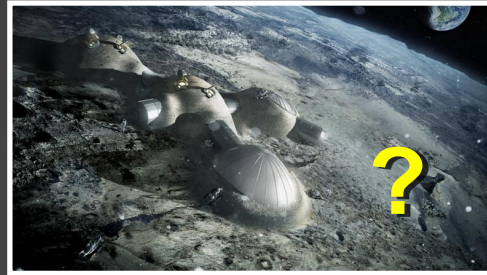


LUNAR FORTRESS CITIES COVERUPS I

The purpose of this study is to ascertain the evidence presented by YouTube channel researcher named *MisteroTotal* out of Spain concerning supposed covered-up city grid layouts on the Moon. The title of the video is call in Spanish, *Edificio Encontrado en la Luna Revela una Enorme Ciudad*, which translates into English as 'Structures Found on the Moon Reveal an Enormous City.' The video was posted online on June 20, 2015 and has over 1 million views so far. The researcher used *GoogleMoon* to study the various divagations of the satellite tapestry of photographs that make up the 'strip' that is put together to render the current depiction, photographic of the Moon by Google.



These are also said to be such anomalies on Mars as well. Presently using GoogleMoon, what is most apparent is the strip of a tapestry of photographs that stretches across the face of the Moon that in in line with the view of Earth.

Gray Areas
Covered-over Areas

Edificio Lunar

22°51'18.95"N 26°

Although it is a powerful tool, many of the photographs are aged and are sourced from even back in the 1960s. In total up to day, there have been over 113 public launches of various Moon orbiters, rovers and probes that have visited the Moon.

22°43'51.29"N 27°16'22.98"

Lunar Strip

Hidden Structures?

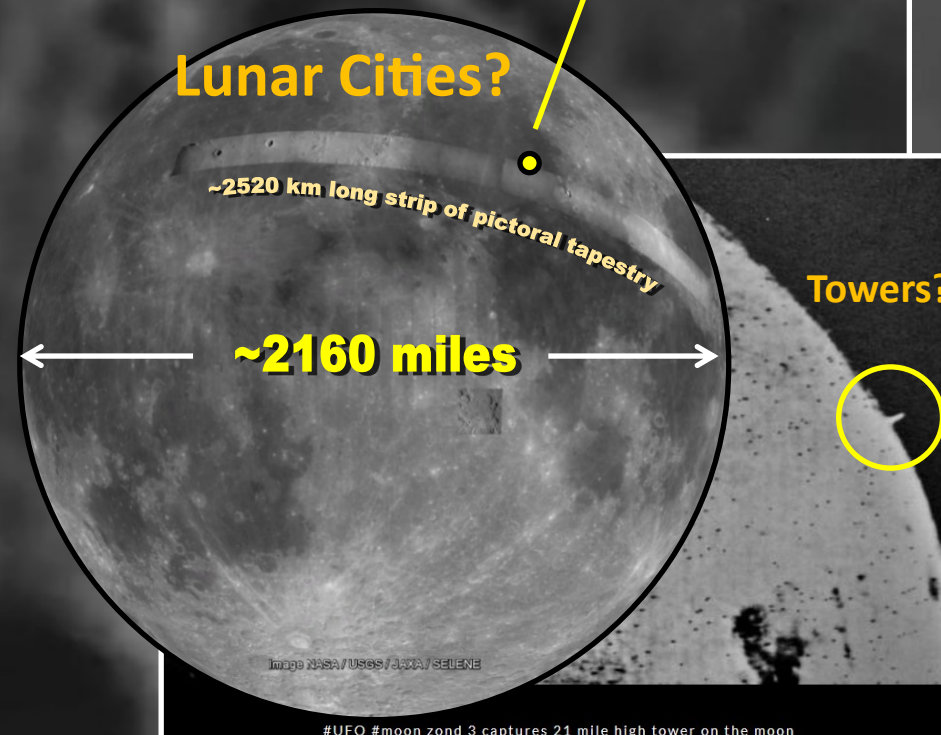
~1.5 miles long

Lunar Cities?

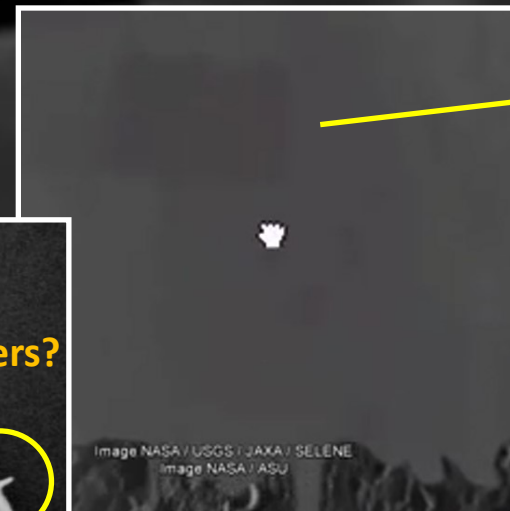
Recognize that the Moon is a captured orbital body or satellite in a true sense and thus does not rotate. This is why the 'Dark Side of the Moon' is never facing the Earth. Many that study the ancient civilizations and dab into the *Ancient Alien Astronaut* theory suggest that Alien bases do exist on the Far Side of the Moon.

The Moon is an astronomical body that orbits planet Earth, being Earth's only permanent natural satellite. Wikipedia

Radius: 1,079 mi
Distance to Earth: 238,900 mi
Age: 4.53 billion years
Orbital period: 27 days
Gravity: 1.622 m/s²
Orbits: Earth



Towers?



This does not include the Black Ops operations that are not publicized nor acknowledged. As the technology is becoming more sophisticated in taking imagery of celestial objects and surfaces of such places like the Moon, so too have the anomalies that have transpired and are thus far, not officially explained by the various government agencies. Such anomalies consist of monoliths, towers, domes, bases, tunnels, and pyramids.

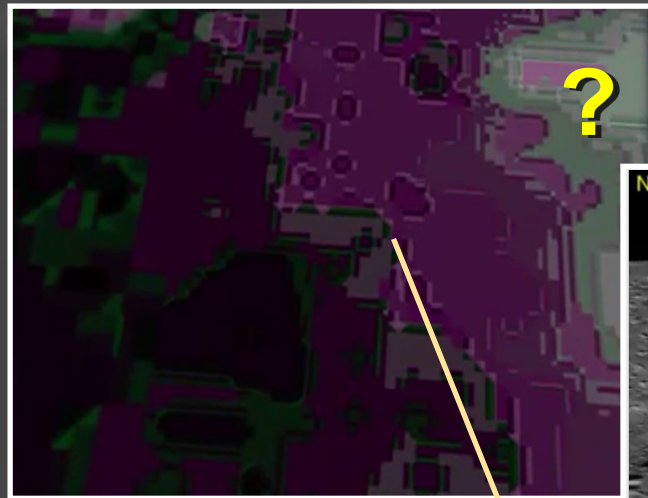
Google earth

22°51'18.95" N 26°45'35.03" O elev. -1428 m alt. ojo 246 m

LUNAR FORTRESS CITIES COVERUPS II

Then there are all those decade-long accounts of remote viewing, astro-projection and dreams that people have had to corroborate the notion that Aliens are working with humans to some capacity on the Dark Side of the Moon. Dr. Eric Norton is one such brave soul that decided to risk his own safety and reveal some information about the things has seen while working for over 10 years in a government project monitoring the alien moon base. According to him, there's an alien base located on the dark side of the moon. The secrets and the conspiracies of the Moon involve the whole spectrum of notions from 21 mile high towers to the Moon being a digital hologram. It is believed by many that at one time in the far distant past, the Moon, as was Mars in particular there were mining operations where various elements were extracted.

22°39'08.29"N 27°14'35.09"



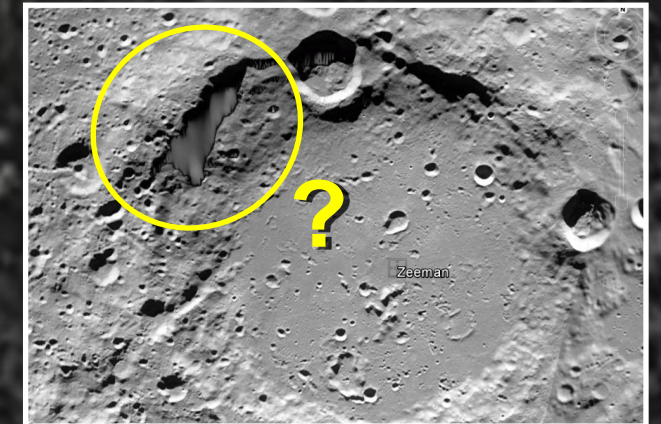
Apparent geometric configuration of structures. It could be an effect of pixilation.

22°51'18.95"N 26°45'35.03"



Gray Areas
 Lunar Strip

Cover-Ups?



73°24'12.11"S 143°43'22.24"W

Perhaps it was to make their galactic ships or shining vehicles or the instrumentation needed for navigation and propulsion, etc. Concerning this study, the researcher MisteroTotal specifically honed-in to the edges of the long strip of the tapestry of images construed by NASA/GoogleMoon. Amazing, the researcher found that on numerous segments of the edges, there appear to be overlapping 'structures' or buildings that stick-out of the delineated photo overlays.

There appears to have been a general 'fuzzy' layer of the topography of the Moon scanned and imaged but certain strips are enhanced and such detail is more revealing, especially as it meshes-up against these said respective border lines. What is anomalous is that there appears to be an attempt to 'cover-up' certain sections that appear to be buildings as they are either square or rectangular in shape with either a black or white-out feature.

Image NASA/USGS/JAXA/SELENE
 Image NASA/ASU

Google earth

22°39'36.01"N 27°14'35.09"W elev: -1398 m alt. ojo 38.62 km

LUNAR FORTRESS CITIES COVERUPS III

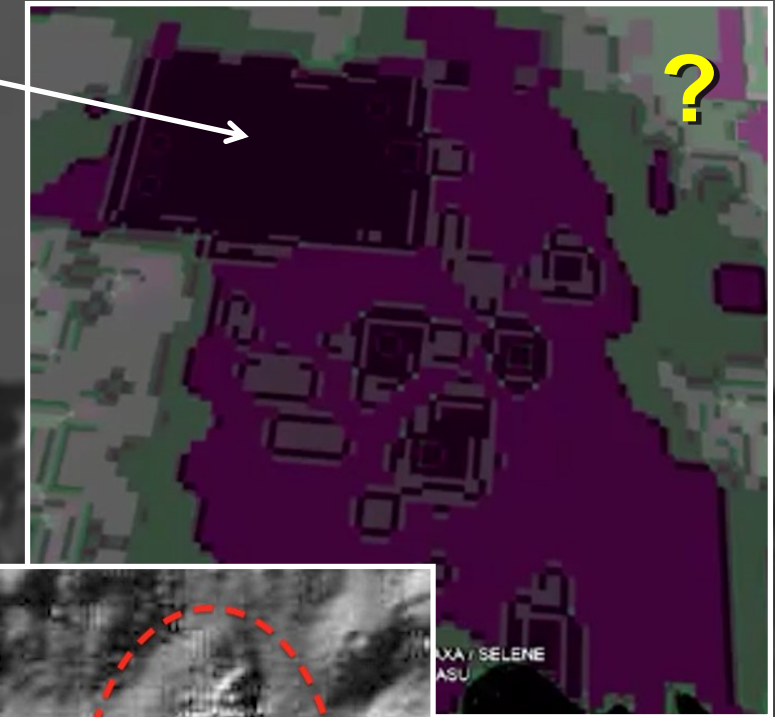
In other cases, certain strips are blurred-out instead. The question comes-up, is this deliberate? Why? Why such a spotty workmanship in covering-up such structures? Did NASA not anticipate that perhaps one day the common man and woman could 'zoom-in' on the lunar surface as one now is accustomed to zoom-in on a Google Street view? Is it the case that as there are too many objects to 'cover-up' by NASA, the work has just been left as it is presently and with no explanations given or to be? It does appear that the areas for example just north of the strip of the tapestry of clearer topography has been intentionally 'blurred-out'. Even in the 1960s, cameras from space or even those orbiting the Moon could pick-up contrasts and shapes. NASA does doctor images as many individual witnesses have come out publically to testify that certain images have been altered to exclude such anomalies as flying UFOs, bases, structures such as pyramids.



NASA Employee Leaves Top Secret Photos Of Base On Moon On Desk While Press Takes Photo 2012, UFO Sighting News.

Lunar Cities?

22°46'38.06"N 27°50'52.05"



Gray Areas

Lunar Strip

Cover-Ups?

The main threat of such revelation would be to the organized religions and institutions that have a vested interest in keeping the 'Sheeple' dumped-down and in a trance to control them. If life, of some sort existed or even does to this day on the Moon and Mars for example, this put the whole Darwinian 'evolutionary' paradigm in disrepute and of a grave fallacy.



Many believe the governments are not divulging such information to the public because it would cause mass panic or hysteria.

Google earth

LUNAR FORTRESS CITIES COVERUPS IV

The highlighted strip on the face of the Moon is over 1000 miles across. What is unique about this tapestry of composite photographs of the Moon's surface is that not all of the 'grayed-out' areas contain the blacked-out or whiteout cover-ups or smudges. Now it could be a matter of optical illusions as layers are placed upon each other in photographic segments that could produce such edges that appear to stick out. However some anomalies of said structures are so profound that the black-outs are beyond the reasonable doubt of a cover-up. There are instances where the black-outs extend for several miles and appear to cover-up as it were vital imagery that is not meant to be seen.



This of course provides more intrigue for researchers to find out what is behind such grayed-out surfaces. This is what MisteroTotal did using *Photoshop*. He took various screenshots of the areas just adjacent the various black and white-outs. Using the brightness/contrast function with filters, he was able to decipher geometric square and rectangle patterns underneath the gray layer of the Moon's surface.

Image NASA / USGS / JAXA / SELENE
Image NASA / ASU



Image NASA / USGS / JAXA / SELENE
Image NASA / ASU

27°39'58.40"N 2°16'17.27"E

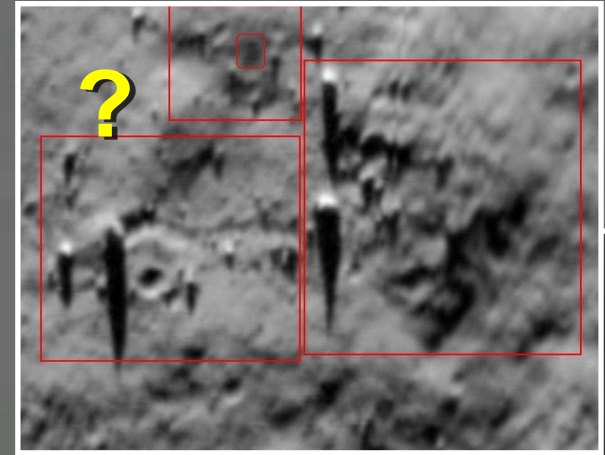
Gray Areas

Lunar Strip

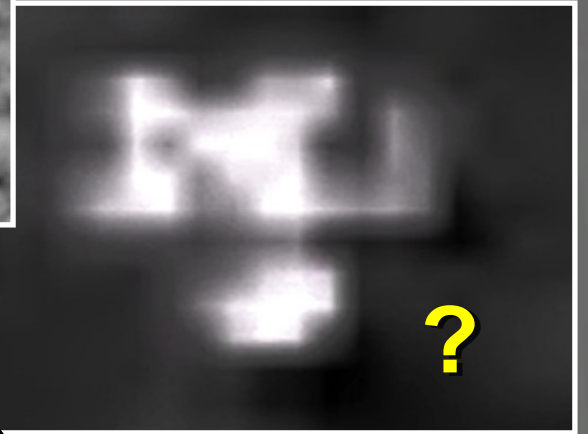


?
Cover-Ups?

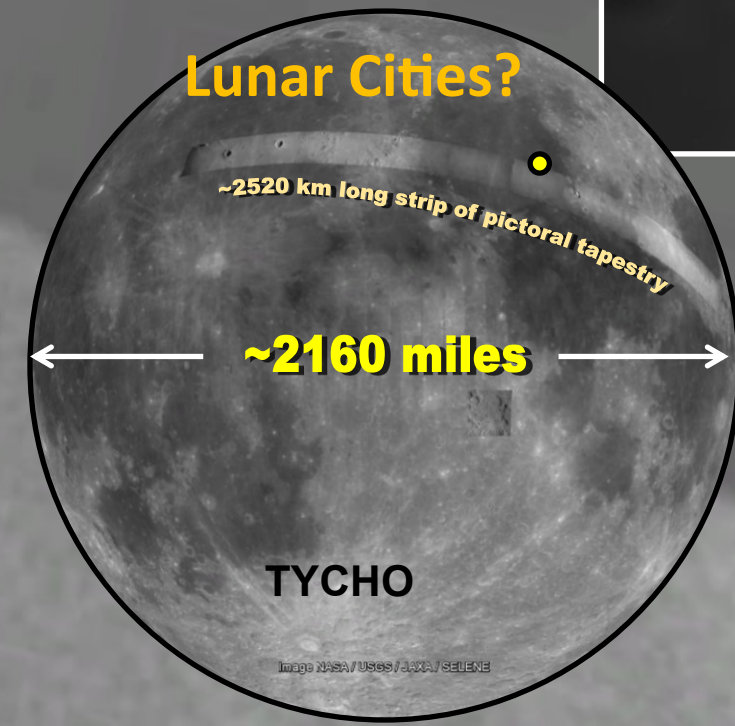
Image NASA / USGS / JAXA / SELENE
Image NASA / ASU



Lunar Towers?



Lunar Cities?



~2520 km long strip of pictoral tapestry

~2160 miles

TYCHO

Image NASA / USGS / JAXA / SELENE

Metallic Buildings Found In Tycho Crater In NASA Photos Tycho is a prominent lunar impact crater located in the southern lunar highlands, named after the Danish astronomer Tycho Brahe. To the south is the crater Street; to the east is Pictet, and to the north-northeast is Sasserides. [Wikipedia](#)

Google Earth