

*Since 1948 Exploring the Wonderful World of Beekeeping Together*

**The Bee Buzzer**  
*Monthly Publication of the*  
**Northeastern Kansas Beekeepers' Association**

VOLUME 77, NUMBER 3

EDITOR: TIM MARSHALL

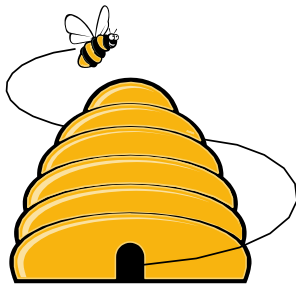
March 2025

**General Meeting**  
**Monday, March 17th, 2025 (7:00 p.m.)**  
Douglas County Fairgrounds Bldg. 21N  
2110 Harper St., Lawrence KS

**Main Program: Swarm Trapping by Tim Gogolski** – Tim is going to briefly touch on colony swarming and then dive deeper into swarm traps and designs. He will also talk about how he and Matthew Brandes monitored their swarm traps with cellular temperature sensors to know when a swarm occupied a box.

### Beelines

#### By President Cheryl Burkhead





The month of March always passes too quickly. This year it seems even more condensed as we've had so very few days to work with our bees. If your hives are still active, there is hope that they will make it to see another season. Many beekeepers, hobbyists to commercial operations, have seen alarming numbers of colony losses, nearly 1.9 million at last count. Scientists are working diligently for an answer.

Colonies are going through their food reserves at a rapid rate as the brood nest continues to grow. Make sure to check on your bees and feed syrup if necessary. Beekeepers can still lose colonies to starvation. It's up to you to keep them alive.

Our last beginner beekeeping class is Saturday, March 15, 2025. Be careful ordering bee packages/nucs/queens as there are many fraudulent sites eager to take your money. Ask our officers and other club members for references before ordering bees.

#### 2025 Meeting Dates:

- 
- March 15<sup>th</sup> Bee-ginning Olathe, KS Extension Office at 8:30am
  - March 17<sup>th</sup>, Monthly Meeting at Fairgrounds at 7:00pm (Bldg. 21)
  - April 3<sup>rd</sup>, Joli and Cecil's Open Apiary in Spring Hill at 5:00pm
  - April 6<sup>th</sup>, Open Apiary Making a Split at Pendleton's at 1:00pm
  - April 13<sup>th</sup>, Open Apiary Making a Split at Pendleton's at 1:00pm
  - April 21<sup>st</sup>, Open Apiary 5pm Hive Inspections prior to Monthly Meeting at 7:00pm (Bldg. 21)
  - April 26<sup>th</sup>, Open Apiary Hive Inspections at Pendleton's at 10:00am led by Tim Gogolski
  - May 1<sup>st</sup>, Joli and Cecil's Open Apiary in Spring Hill at 5:00pm
  - May 4<sup>th</sup>, Open Apiary Hive inspections at Pendleton's at 1:00pm
  - May 10<sup>th</sup>, Open Apiary Hive Inspections at Pendleton's at 10:00am led by Tim Gogolski
- 

- May 19<sup>th</sup>, Open Apiary 5pm, Monthly Meeting at 7:00pm (**Location TBD-not at Fairgrounds**)
- June 1st, Open Apiary Hive Inspections at Pendleton's at 1:00pm
- June 7th – Bee Funday! All day! At Fairgrounds
- June 9th, Open Apiary Hive Inspections at Pendleton's at 5:00pm led by Kristi Sanderson
- June 12<sup>th</sup> (**2<sup>nd</sup> Thursday**), Joli and Cecil's Open Apiary in Spring Hill at 5:00pm



## Ol' Bee Gal

I am just returning from the KHPA spring meeting. Dr. Jennifer Tsuruda made our weekend! We had a speaker bow out due to an accident and the need for emergency surgery. Being the professional that she is, Dr. Tsuruda jumped in and not only saved the day but gave us all very valuable and timely information about our bees. Here are a few take-aways. We (the United States) have experienced a 1.8 million colony loss this past winter! (We may find that it is higher.) How can you help? Number one on Dr. Tsuruda's list, keep better records. (That was not what I was expecting.) We can only hope to suss out the cause of these losses by examining hives, examining beekeeping practices, evaluating locations, and recording what we did to keep our colonies healthy. If you did not experience any significant colony loss, your records are just as important as those folks who did. Plan NOW for this year and then stick to it. How will you take records, where will those be kept, how will you help yourself be more consistent in your note taking? We were reminded of electronic supports that nearly every beekeeper has and it's probably in his/her pocket—the cell phone. More powerful than the computers on the first rockets into space, you can record pictures, record by date, add notes, and mark locations. I am playing with a new (new to me) app called Bee+. There is a small fee to purchase the app, but not only can you record a lot of specific information about your hive, you can attach pictures for reference. Another beekeeper suggested using a stylus to access your phone. He said it minimizes propolis on the buttons of the phone and made recording much easier. Whatever works for you—make a plan.

Dr. Tsuruda also challenged all of us who lead teaching apiaries to use our worst hives. Our hives that are failing to thrive are teachable moments waiting to happen. If you (new beekeepers) are not sure what you are looking for when doing a hive inspection, our OTA's (Open Teaching Apiary) are your best resource. We should always have a goal or focus when we get into our hives. The goal could be checking growth (records will help you recognize whether your hive is growing appropriately) or the goal could be checking for signs of swarming. Thinking of the 'why' will help focus on what the bees are doing and what you are seeing.

This might be my favorite pearl of wisdom from Dr. Tsuruda: Keep all the tools in your beekeeping tool box you might need to keep your bees alive. You need to keep your bees alive to learn how to be a beekeeper. After you learn how to keep bees alive, then you can make choices about trying different approaches to beekeeping. No one wants to add chemicals to their colonies. But do not abandon the treatment of mites until you understand the biology and the nature of the obligate parasitic relationship between the bee and mite.

Dr. Tsuruda has some of the most fantastic bee photography I've seen. She reported that in her part of the country, there are quite a few commercial type beekeepers, and they tend to like open feeding. Open feeding is the practice of setting very large containers of sugar syrup in an open space near a bee yard and letting bees collect the syrup and take it back to their hives. This is practiced instead of internal feeding. She asked people not to open feed for a couple reasons. First, she showed a short video of bees sucking up syrup and very plainly a varroa jumping from one bee to another. So fast! If your hive didn't have mites and they shared an open feeding trough with feral bees loaded with mites, they now have mites. Dr. Tsuruda also indicated that these feeding stations could be spreading grounds for the viruses we know and even things we do not know. Bee cautious of these opportunities for creating sick bees.

Lastly, Dr. Tsuruda reminded us that when we get together as a group or club, we tend to focus on problems, on diseases, on concerns in the industry and our hives. She reminded us with dozens of beautiful bee and pollinator pictures that we are doing good things, and we should try to find our joy in beekeeping every time we visit our hives. I wish you all could have joined us!

On a personal note, I lost my 92-year-old mother this last week. It is to her that I attribute my love of flowers and garden and nature. She did not want to be a beekeeper, but she thought it was fascinating that I did, and she loved to talk about the bees. Love you mom, miss you. **Becky Tipton**

**SUBSCRIBE TO A MONTHLY BEE MAGAZINE. STAY INFORMED.**

[Bee Culture Magazine \(link\)](#)      [American Bee Journal \(link\)](#)

Use the links to subscribe directly...annual subscription rates under \$6 per month for both!

This is fantastic information right at your fingertips. As part of your beekeeping experience, it's important to be up to date with the trends in bee biology, honey processing, the industry, and much more!



**ASK QUINBY & REMI**

**Dear Quinby and Remi:** I've ordered my bees, but I'm petrified that I'm getting in over my head? Any advice? What should I do to get prepared?

**Quinby and Remi answer:** Come to our March meeting on Monday the 17th and get in the habit of attending the monthly meetings. They are at 7 pm on the 3rd Monday of the month. Watch the Buzzer for the location, occasionally it changes! Make plans to attend the Funday on Saturday, June 7th. It is an all-day beekeeping workshop with tons of educational activities! We have a swarm demo, guest speakers, great food, lots of vendors and bees there - - several workshops will be held at the hives. Most important for your education, plan to attend the Open teaching Apiary sessions, listed elsewhere in this Buzzer. During each session we go through hives, showing you how to use your smoker and hive tool and work through a hive. We look for eggs, larva, the queen, honey and pollen. During the first session on Sunday April 6<sup>th</sup>, we'll also install a package of bees, and we'll make some nucs from the hives that survived the winter. We ask that you sign up- in case we must cancel we'll be able to notify you. We hold some at our house too! You can meet us at the sessions at Joli and Cecil's.

If reading is your thing, the club has a great library with great books that you can check out for 1 month!

**Dear Remi and Quinby:** I'd like to split my hive this year is there anything I can be doing now so I can get my bees strong enough to do that?

**Remi and Quinby answer:** If you would like to split your hives, you can start feeding them now to get the queen to lay more eggs, soon to be brood. Check your hive to make sure that you'll have extra brood- we like to leave 3-4 frames of brood the first week of April and take the rest. We like to start nucs with 3 frames of brood plus some honey and pollen and a new queen that we have purchased. We have not been successful in letting them raise their own queen. The open teaching apiary will have a nuc making session on Sunday April 6th. Make sure and sign up for that!



**The NEKBA Beeyard**

Join us this year at our Open Teaching Apiary (OTA) located at Pendleton's Country Market, 1446 E 1850 Rd., Lawrence KS 66046. During our OTA events we typically go through hives looking for the queen, eggs, larva and brood. We talk about what we should be doing in our hives. We also spend a lot of time talking about your hives- we answer a lot of questions!

We may add more dates. We ask that you register through sign-up genius so that we know how many are coming and we can get in touch with you if we must cancel. Please bring your beekeeping suit but note that we have extras. Please use this link to sign up <https://www.signupgenius.com/go/10C054DA9A72CA2FAC70-55554696-open> check out our NEKBA website at [www.nekba.org](http://www.nekba.org) for more information and schedule changes.

For questions call Joli at 913-593-3562.

OTA Dates (other dates may be added)

Sunday, April 6      1:00-3 Making Nucs & evaluating hives, installing a package of bees Joli & Cecil

Sunday, April 13	1:00-3 Making Nucs and evaluating hives Joli & Cecil
Monday, April 21	5-6:30 (Before the NEKBA meeting) Cecil Sweeney
Saturday, April 26	10am-12 Tim Gogolski
Sunday, May 4	1:00-3

### Open Teaching Apiary in Spring Hill

Join Joli Winer and Cecil Sweeney for mentoring sessions one day a month. Please call, text or email to secure your spot. Extra suits are available. Sessions start at 5:00 pm, about 2 hours. 19201 S Clare Rd Spring Hill KS 66083 913-593-3562 [heartlandhoneyks@gmail.com](mailto:heartlandhoneyks@gmail.com)

1st Thursday-April 3, May 1, June 12 (2nd Thursday), July 3, August 7, September 4, October 2 5-7pm

### Tips for March

- The bees are out, and pollen has been spotted! Brood is rearing and hives are trying to grow!!
- Feeding stimulates the bees, heavy feeding for more bay-bees and you can even light feed colonies to ensure they don't starve.
- Swarming season is coming, are you catching them all or making splits?
- Been a lot of commercial colonies lost this year. Don't feel alone or afraid to ask questions and share.
- Sign up for GPMB, it's free and gives you great videos and information!
- Watch for starvation and know we probably have a cold snap or two coming.
- Artificial swarms or real swarms will start next month, reports are already in of capped Drones.
- Switch to 1:1 in March if feeding is needed, the hive will use lots of honey raising brood.
- Lots of feed holes help a hive put on weight, only a few feed holes will stimulate.
- The bees are making plans, determine your plans before they do.
- These next few months plan on checking on your hives weekly or bi-weekly.
- Depending on weather, full inspections can be done.
- Mite inspection!! You have some options before the honey flow if treatment is needed.
- Patience don't' expand or split too soon.



### Military/Veterans Apprenticeship Program

Are you a veteran or on active duty and thought about getting into beekeeping? The Northeast Kansas Beekeepers Association (NEKBA) offers an apprenticeship for veterans and active-duty service members that covers the cost of education, bees, and equipment. The association also provides a mentor to help you with your journey.

Application must be submitted by 31 October. Spots are limited, and more information can be found at <http://www.nekba.org/scholarship.html>

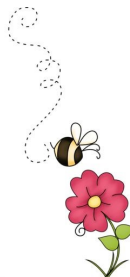
If you have any questions, please let me know. Buck Bradley 785-248-1005 [Babradley82@gmail.com](mailto:Babradley82@gmail.com)

**Buck Bradley, Military/Veteran Appr. Liaison**

### Honey Plants

Adios, auf Wiedersehen, and goodbye to the snow and bone-chilling winter winds. I know I am ready for spring. On the plus side, the snow we received had many benefits. Many of us went into winter under abnormally dry conditions. Snow is a wonderful insulator and as it melts the moisture is absorbed down into the soil where it is needed. Moisture in the soil enables blooms to be better nectar producers.

We are fortunate here in NE KS. There are plenty of pollen producing plant species our honey bees will forage on. At this time of year, the nurse bees are starting to feed lots of their larvae. They need pollen, a protein source, to do so. Silver Maple trees began blooming on February 24th in a few areas. The blooms can be difficult to spot on the tree, especially on a mature Silver Maple. The easy way is to look for honey bees on the landing board carrying greenish colored pollen in their pollen baskets.



Red Maples, Elms, and Pussy Willows (sometimes referred to as Goat Willow), will follow. Red Maples produce grey-brown pollen and Willows produce yellow pollen. Elm pollen is yellowish green and blooms last 10-14 days.

You may have some spring bulbs that are sources of pollen too. Crocus, Siberian Squill, Snowdrops, and Hyacinths can begin blooming in March and produce colorful pollen. Crocus pollen is bright yellow and the Siberian Squill produces steel blue pollen. Orange red pollen comes from Snowdrops and the Hyacinth's pollen is creamy white to yellow green.

A few NEKBA members have expressed interest in converting acreage to pollinator habitat. There are some organizations and government programs available to help with planning, cost sharing, and overseeing your project. I have heard from one club member that he was very pleased with the help given by The Bee and Butterfly Fund. He is in the second year after converting 2 acres using their Seed A Legacy program. He showed me the seed mix that this fund provided. Not only was it impressive, but it was also extensive. To learn more about this program visit <https://www.beeandbutterflyfund.org>

The Natural Resources Conservation Services is a division of the USDA. The NRCS has offices in most counties in NE KS. They have several programs that might be able to help you. A recent phone call to one of these offices confirmed that NRCS has recently been affected by federal layoffs and cutbacks. They may still be able to share costs and make onsite recommendations. This department also offers equipment for large-scale seed planting. More information available at <https://www.kacd.net/assistance.cfm>

Another government program is the Farm Service Agency. This department offers a Pollinator Habitat Initiative and Conservation Reserve Program. The FSA's CP42 program focuses on native plantings and can help with cost sharing. <https://www.fsa.usda.gov/resources/programs/conservation-reserve-program>

If you are interested in a large-scale project of 10 acres or more, Pollinator Partnership has a native wildflower grant program. Information for the 2025 Grant Program will be updated in June on their website.

<https://www.pollinator.org/native-seed-grants>

There are many resources available, I think that there should be something there that can help you achieve your goals. Adding pollinator habitat, no matter the size, can be very beneficial to pollinators and honey bees.

**Jo Patrick, Honey Plants Chairman**



**Bee Funday 2025! Save the date, Saturday June 7<sup>th</sup>.**

**And Deep Dive Queen Rearing Workshop.**

The Funday is quickly approaching! Save the date of Saturday June 7<sup>th</sup>! The Funday is located at the Douglas County Fairgrounds in Lawrence KS at 2120 Harper St. Join us for plenty of educational [presentations, vendors, lunch, honey ice cream, a swarm demo, presentations at the bee hives- it'll be new and different this year. This year the fee is \$65 for NEKBA members and \$75 for non-members. We are limited to 300 people so register early.

Our guest speakers are:

**Amy Vu** from the University of Florida Extension. Amy is co-host of the Two Bees in a Podcast and manages the University of Florida Master Beekeeping Program. She'll be a great addition to our program!

**Kim Mehalick** from Maryland is an EAS master beekeeper. She has a lot of commonsense beekeeping ideas to share with us.



**Dr. Judy Wu-Smart** from the University of Nebraska, Lincoln will also join us. Judy is part of a “team” studying why so many hives have died this spring!

As part of the Funday this year, we are trying something new. We are calling it a **“Deep Dive” Queen Rearing Class**. It is a 2 ½ hour queen rearing workshop. Jim Kellie, John Speckman and Matthew Winstead will be presenting. It will be limited to 25 participants. We want our NEKBA members to have the first opportunity to sign up for it. Note that you must commit to being there the entire time of the workshop, and you must pay for the Funday, though there will not be an additional charge for this class, it’s part of the Funday. Until we work out how to sign up, call, text or email Joli at 913-593-3562 or [heartlandhoneyks@gmail.com](mailto:heartlandhoneyks@gmail.com). There will not be an additional fee, it will be included in your Funday fee.



## Northeastern Beekeepers Association

### Beginning Beekeeping Class

See date and location below

8:30-8:50	<b>Registration</b>
8:50-9:00	<b>Introduction - Kristi Sanderson</b>
9:00-9:20	<b>My first years in beekeeping - Mark &amp; Milisa Suckow</b>
9:25-10:10	<b>Equipment and Acquiring Bees - Kristi Sanderson</b>
10:10-10:25	Break
10:25-11:10	<b>Honey Bee Biology-Cheryl Burkhead</b> basic biology that will aid in making good decisions
11:15-12:00	<b>A Year in the Bee Yard - Becky Tipton</b> overview of what to expect when with your bees
12:00-1:00	Lunch
1:00-1:10	<b>Learning Opportunities with NEKBA - Kristi Sanderson</b>
1:15-1:30	<b>Honey Plants - Jo Patrick</b> important honey plants
1:35-2:05	<b>Hive Location and Hive Inspections - Mathew Brandes</b> hive location & looking inside
2:05-2:20	Break
2:20-3:10	<b>Mites and Diseases - Joli Winer</b> testing and treating for mites and recognizing diseases
3:15-3:45	<b>Extracting Honey - Bob Burns</b> equipment needed
3:45-4:30	<b>Q &amp; A</b>

Topics or presenters subject to chance

**Location for Saturday, March 15: Johnson County Extension Office 11811 S Sunset Dr. Olathe, KS 66061**



# NEKBA 2025 FUNDAY EXPO

**Saturday, June 7th Douglas County Fairgrounds, 2110 Harper Lawrence KS**

**Speaker Presentations, Swarm Demo, Open Apiary, Value-Added Talks, & Honey Ice Cream!**

## Guest Speakers:

**Amy Vu University of FL Extension**

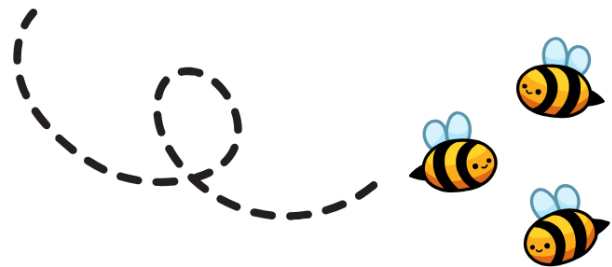
**Dr. Judy Wu-Smart University of Nebraska Extension**

**Kim Mehalick EAS Master Beekeeper**

**Any many more!**

## Saturday Dinner & Program

For an additional fee we will have an optional catered dinner

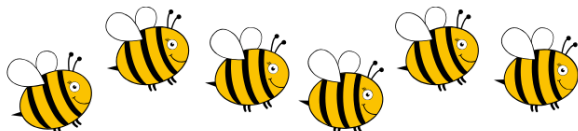


**Funday Vendors-  
List Available as Vendors  
sign up**

**Beekeepers.com**

## Hotel Arrangements

**A group rate: The Country Inn and Suites, 2176 E 23rd, Lawrence KS  
66046. 785-727-1825**



**Register here at  
[www.NEKBA.ORG](http://www.NEKBA.ORG)  
\$65.00 fee**

**QUESTIONS?  
Funday: Call Joli  
@ 913-593-3562  
Registration: Call Robert @  
913-481-3504**

## NORTHEASTERN KS BEEKEEPERS' ASSOC. 2025 MEMBERSHIP APPLICATION

NAME \_\_\_\_\_  
ADDRESS \_\_\_\_\_  
CITY \_\_\_\_\_ STATE \_\_\_\_\_ ZIP+4 \_\_\_\_\_  
PHONE \_\_\_\_\_ Email Address \_\_\_\_\_  
I would like to receive the newsletter, *The Buzzer*, by email Yes \_\_\_\_\_ No \_\_\_\_\_

Membership Northeastern KS Beekeepers per year (July-Dec. \$12.50)	\$25.00	_____
Additional family members wanting voting rights \$1.00 per person	\$1.00	_____
Additional family member's name _____ (Youth Membership (18 years of age or under)	\$12.50	_____
Membership for Kansas Honey Producers Association	\$25.00	_____
American Bee Journal (discounted rate through association)	1 year \$29.75	_____
Bee Culture Magazine (or subscribe online at <a href="http://www.BeeCulture.com">www.BeeCulture.com</a> )	1 year \$34.00	_____
Scholarship / Military/Veteran's Appr. Donation		_____
	<b>Total</b>	_____

**Make checks payable to: NEKBA or Northeastern Kansas Beekeepers Assn.**

Mail to: Robert Burns, 7601 W 54<sup>th</sup> Terr., Shawnee Mission, KS 66202 ph. 913-481-3504, [rburnshoney@gmail.com](mailto:rburnshoney@gmail.com)

**You may join, re-new, register, donate and pay online at [www.nekba.org](http://www.nekba.org)**

---

## MARKET PLACE

---

### MENTORING-SWEET PRAIRIE HONEY

Need help with your hives? -Spring inspections, installing packages, making splits, queen evaluation, diagnosis of pests and diseases, mite monitoring and treatment, etc. I can help you with your beekeeping needs! I am a certified master beekeeper with 30+ years of beekeeping experience. I will leave you with a written course of action after our session at your hives. Call or text 913-768-4961 or email Kristi Sanderson at [sandersonk09@gmail.com](mailto:sandersonk09@gmail.com) for pricing and appointment times.

---

### BEEKEEPERS.COM

[Beekeepers.com](http://Beekeepers.com) (Jordy's Honey Company) in Lenexa, KS. Beekeepers.com is your only local full-service beekeeping store. We carry a full line of Beekeeping Supplies, Protective Clothing, Bottles, Bee Packages, Nucs and Queens. Visit our website [Beekeepers.com](http://Beekeepers.com), to view our entire line of beekeeping supplies. You can also shop in-person at our store in Lenexa. We ship queens directly to YOU! Order at [QueenBees.com](http://QueenBees.com). Queens available March - October. Our hours are Monday-Friday 9:00-4:00, Saturday 9:00-12:00. You can find our honey at The Overland Park Farmers Market. **Robert Hughes**, 14054 W 107<sup>th</sup> St, Lenexa, KS 66215, 913-681-5777 or [email Info@Beekeepers.com](mailto:email Info@Beekeepers.com)

---

### COTTIN'S HARDWARE & RENTAL

Cottin's stocks a full line of beekeeping equipment year-round including items manufactured by Harvest Lane Honey, Little Giant, and Bug Baffler. Products include hives, supers, frames, foundations, extractors, tools, and protective apparel. We also stock a full line of Home Brewing Mead Making supplies. Located in Lawrence, KS at 1832 Massachusetts Street (South of Dillon's). We are open Monday - Friday 7:30 am - 6:00 pm, Saturday 8:00 am - 5:00 pm, and Sunday 10:00 am - 5:00 pm. You can follow us on Facebook, Instagram and Twitter. Call us at 785-843-2981 or email us at [hardware@sunflower.com](mailto:hardware@sunflower.com).



---

## CB'S HONEY

CB's Honey offers pure raw Kansas honey available in 5 gal buckets. Grafted queens and queen cells, and a limited number of nucs/packages. [CB's Honey | Facebook](#). Located just SE of Topeka. 4521 SE 61<sup>st</sup> Street, Berryton, KS 66409. Call or text Cheryl Burkhead at 785-224-9077 or [cherylbhoney@gmail.com](mailto:cherylbhoney@gmail.com)

---

## CEDAR RIDGE BEES

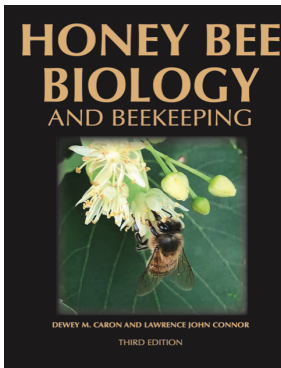
5 Frame Nucs for Sale. We are your local Premier Bee Products Dealer specializing in plastic foundation made entirely in the U.S.A. We sell bucket feeders and other bee equipment. Call or text Philip Knaus at 785-581-4216 or contact us at [cedarridgebeehives@gmail.com](mailto:cedarridgebeehives@gmail.com) - Check out our bees and products at [www.cedarridgebees.com](http://www.cedarridgebees.com) Cedar Ridge Bees 585 N 500 Rd, Overbrook, KS 66524.

---

## T CREEK BEES AND HONEY – Tecumseh/Berryton, KS

Tecumseh Creek winds its way through the home yard lending its name to the brand. Located between Lawrence and Topeka, T Creek offers 5-frame nucs, online honey sales, custom honey packing, wholesale delivery to the Topeka / Lawrence area, 5-gallon buckets of honey, and drop-shipping wholesale service to rural grocery stores and agritourism destinations. Visit [www.tcreekbees.com](http://www.tcreekbees.com) Email: [tcreekbees@gmail.com](mailto:tcreekbees@gmail.com) or find the bees on Facebook. Order 2025 5-frame nucs by visiting the website and completing the nuc order form. Owner: Tim Urich. LLC in the State of Kansas and licensed by Kansas Dept of Ag.

---



**Honey Bee Biology and Beekeeping, Third Edition, Dewey M. Caron and Lawrence John Connor,**

**\$90 postage included.** *This book should stay on the dashboard of every beekeeper's truck. It's that good, and that necessary. Kim Flottum, Bee Culture.* This comprehensive textbook easily replaces many beginner books while adding comprehensive details of bee biology essential to becoming a successful beekeeper and student of the honey bee. First released in 1999, *Honey Bee Biology and Beekeeping* is widely accepted as a major textbook of Apiculture (beekeeping). Beekeepers and bee clubs use it to teach other beekeepers.

Universities use it to teach college students bee biology and beekeeping. It concentrates on the 'why', 'how' and 'when' of beekeeping. It explains bee and beekeeping basics in a manner meaningful to people who lack an extensive background in biology. Yet it is not over-simplified and provides a meaningful source of beekeeping information for the informed beekeeper. The Third Edition has been carefully edited, updated and expanded to 480 pages. New chapters have been added, as have colorful new graphics and photographs. The Glossary has also been expanded. **Wicwas Press LLC Kalamazoo, MI 49001 - [www.wicwas.com](http://www.wicwas.com)**

---

**The Association does not endorse nor evaluate the advertisements, products, or services offered in the Buzzer.**

Northeastern Kansas Beekeepers Association  
Robert Burns, Treasurer  
7601 W 54<sup>th</sup> Terr  
Shawnee Mission, KS 66202-1129

## Address Service Requested

### Meeting

Monday, March 17<sup>th</sup>, 2025

### *The Northeastern Kansas Beekeepers' Association*

Membership is open to anyone interested in bees or bee culture. Dues are \$25.00 per calendar year (December 31-December 31) for the first in the family joining. Those joining in July or later in the year may pay \$12.50 for ½ year. Additional members of a family wanting voting privileges shall be assessed dues at \$1.00 per year. Youth memberships (18 years of age and younger) are \$12.50 per year. Please submit new memberships and renewals to the treasurer or on-line at [www.nekba.org](http://www.nekba.org).

*The Bee Buzzer* is the official publication of the Northeastern Kansas Beekeepers' Association, Inc. and is published monthly. Commercial ads are accepted in the newsletter for a fee; non-commercial ads by paid members are accepted & are free.

The library of the association is free to all members. Books may be checked out at the meetings and kept for a period of 30 days. The bee publications, *The American Bee Journal* and *Bee Culture* can be subscribed to through the treasurer or on-line. The *American Bee Journal* is offered at a discount through the Association only.

The Association meets each month, generally on the third Monday at 7:00 p.m. except during the months of January and July. This is a non-profit organization; elected officers serve without pay. Everyone is invited to attend the meetings. Check *The Bee Buzzer* or website at [www.nekba.org](http://www.nekba.org) each month for the actual date, time, and location. If the weather is bad, call an officer or check the website to find out if the meeting will be held or cancelled.

#### 2025 Officers

President: <b>Cheryl Burkhead</b> , 4521 SE 61st St., Berryton, KS 66409 <a href="mailto:cbfritz@aol.com">cbfritz@aol.com</a>	785-224-9077
1st VP (Program Chair): <b>Matt Brandes</b> , 4741 Highway K 68, Wellsville, KS 66092 <a href="mailto:matthew@n523rv.com">matthew@n523rv.com</a>	913-706-3087
2nd VP (Librarian): <b>Michael Hewitt</b> , 9221 SE Berryton Rd, Berryton, KS 66409 <a href="mailto:garlicranch69@gmail.com">garlicranch69@gmail.com</a>	785-230-0827
3rd VP (Honey Plants): <b>Jo Patrick</b> , 611 E Sheridan St., Olathe, KS 66061 <a href="mailto:brian-patrick@sbcglobal.net">brian-patrick@sbcglobal.net</a>	913-645-8947
Secretary: <b>Elaine Ellenz</b> , 17650 W 113 <sup>th</sup> St., Olathe, KS 66061 <a href="mailto:elaineellenz@gmail.com">elaineellenz@gmail.com</a>	913-515-1607
Treasurer: <b>Robert Burns</b> , 7601 W 54 <sup>th</sup> Terr., Shawnee Mission, KS 66202 <a href="mailto:rburnshoney@gmail.com">rburnshoney@gmail.com</a>	913-481-3504
Youth Scholarship Chair: <b>Jon Chitwood</b> , 27196 W 223 <sup>rd</sup> St, Spring Hill, KS 66083 <a href="mailto:jwchitwood@gmail.com">jwchitwood@gmail.com</a>	913-738-4585
Military/Veteran Appr. Liaison: <b>Buck Bradley</b> , 11 E 900 Rd., Baldwin City, KS 66006 <a href="mailto:buckusmc00@hotmail.com">buckusmc00@hotmail.com</a>	785-248-1005
Editor: <b>Tim Marshall</b> , 4736 Halsey St., Shawnee, KS 66216 <a href="mailto:flyinmonk@yahoo.com">flyinmonk@yahoo.com</a>	816-392-6854
Special Events Coordinators:	
(Classes): <b>Kristi Sanderson</b> , 1252 E Frontier Ln., Olathe, KS 66062 <a href="mailto:sandersonk09@gmail.com">sandersonk09@gmail.com</a>	913-768-4961
(Funday): <b>Joli Winer</b> , 19201 S Clare Rd, Spring Hill, KS 66083 <a href="mailto:heartlandhoneyks@gmail.com">heartlandhoneyks@gmail.com</a>	913-593-3851
Webmaster: <b>Robert Burns</b> , 7601 W 54 <sup>th</sup> Terr., Shawnee Mission, KS 66202 <a href="mailto:rburnshoney@gmail.com">rburnshoney@gmail.com</a>	913-481-3504

Visit on-line at [www.nekba.org](http://www.nekba.org). Save time. Join, re-new, or register.