

Rabbit Anti-Cytokeratin 19 [MD93R]: RM0079, RM0079RTU7

Intended Use: For Research Use Only

Description: Cytokeratin polypeptide 19 (CK19) is a type I intermediate filament protein that is expressed in stratified and simple-type epithelia. CK19 is synthesized mainly in embryonic and adult simple epithelia, but has also been found in non-keratinizing stratified epithelia as well. CK19 is the smallest known keratin and is remarkable in that, contrary to all other keratins, it does not have a designated partner for the formation of filaments, implying that regulation of its expression is different from other keratin-encoding genes. CK19 antibody is a useful tool for the identification of epithelial tumors. It is helpful in distinguishing hepatocellular carcinoma (CK19-) from cholangiocarcinoma (CK19+) or metastatic carcinoma in liver (CK19+).

Specifications:

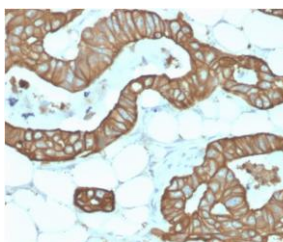
Clone: MD93R
 Source: Rabbit
 Isotype: IgG
 Reactivity: Human, mouse
 Immunogen: Recombinant human full-length CK19 protein
 Localization: Cytoplasm
 Formulation: Antibody in PBS pH7.4, containing BSA and $\leq 0.09\%$ sodium azide (NaN₃)
 Storage: Store at 2°- 8°C
 Applications: IHC, WB
 Package:

Description	Catalog No.	Size
Cytokeratin 19 Concentrated	RM0079	1 ml
Cytokeratin 19 Prediluted	RM0079RTU7	7 ml

IHC Procedure*:

Positive Control Tissue: Colon, colon cancer
 Concentrated Dilution: 50-200
 Pretreatment: Tris EDTA pH9.0, 15 minutes using Pressure Cooker, or 30-60 minutes using water bath at 95°-99°C
 Incubation Time and Temp: 30-60 minutes @ RT
 Detection: Refer to the detection system manual

* Result should be confirmed by an established diagnostic procedure.



FFPE human colon stained with anti-CK19 using DAB

References:

1. The expression profiles of acidic epithelial keratins in ameloblastoma. Pal SK, et al. Oral Surg Oral Med Oral Pathol Oral Radiol 115:523-31, 2013.
2. Cholestasis induces reversible accumulation of periplakin in mouse liver. Ito S, et al. BMC Gastroenterol 13:116, 2013. Glp-1 analog, liraglutide, ameliorates hepatic steatosis and cardiac hypertrophy in C57BL/6J mice fed a Western diet. Mells JE, et al. Am J Physiol Gastrointest Liver Physiol 302:G225-35, 2012.
3. Ectopic production of hair keratin constitutes Rushton's hyaline bodies in association with hematogenous deposits. Sakamoto K, et al. J Oral Pathol Med 41:637-41, 2012.
4. Impaired surfactant production by alveolar epithelial cells in a SCID-hu lung mouse model of congenital human cytomegalovirus infection. Maidji E, et al. J Virol 86:12795-805, 2012.

Doc. 100-RM0079
Rev. B