

**Rabbit Anti-TFF1/pS2 [MD119R]: RM0183, RM0183RTU7**

**Intended Use:** For Research Use Only

**Description:** It recognizes a polypeptide of 6.5kDa, identified as TFF1 or pS2 estrogen-regulated protein. Its epitope is localized between aa57-84 of human TFF1 protein. TFF1 is a trefoil peptide. Trefoil peptides are protease resistant molecules secreted throughout the gut that play a role in mucosal healing. These peptides contain three intra-chain disulfide bonds, forming the trefoil motif, or P-domain. TFF1 is known to form dimers and this dimerization is thought to play a role in its protective and healing properties. About 60% of breast carcinomas are positive for TFF1. Staining is cytoplasmic, often with localization to the Golgi apparatus. TFF1 is shown to be localized in normal stomach mucosa, gastric fluid, goblet cells in the colon and small intestine, and in ulcerations of the gastrointestinal tract. Several studies have shown that TFF1 is primarily expressed in estrogen receptor-positive breast tumors and it may define a subset of estrogen-dependent tumors that displays an increased likelihood of response to endocrine therapy.

**Specifications**

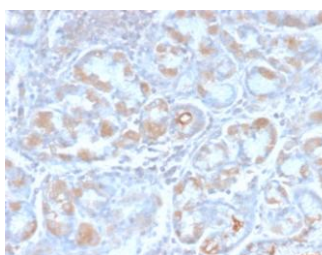
Clone:	MD119R
Source:	Rabbit
Isotype:	IgG
Reactivity:	Human
Immunogen:	Synthetic peptide of human pS2 C-terminus aa 57-84
Localization:	Cytoplasm
Formulation:	Purified antibody in PBS pH7.4, containing BSA and ≤ 0.09% sodium azide (NaN3)
Storage:	Store at 2°- 8°C
Applications:	IHC
Package:	

Description	Catalog No.	Size
TFF1/pS2 Concentrated	RM0183	1 ml
TFF1/pS2 Prediluted	RM0183RTU7	7 ml

**IHC Procedure**

Positive Control Tissue:	Colon, colon cancer
Concentrated Dilution:	50-200
Pretreatment:	Tris EDTA pH9.0, 15 minutes using Pressure Cooker, or 30-60 minutes using water bath at 95°-99°C
Incubation Time and Temp:	30-60 minutes @ RT
Detection:	Refer to the detection system manual

\* Result should be confirmed by an established diagnostic procedure.



FFPE human stomach carcinoma stained with anti-TFF1 using DAB

**References:**

1. Identification and Validation of a Diagnostic and Prognostic Multi-Gene Biomarker Panel for Pancreatic Ductal Adenocarcinoma. Klett H, et al. Front Genet 9:108, 2018.
2. TFF1 hypermethylation and decreased expression in esophageal squamous cell carcinoma and histologically normal tumor surrounding esophageal cells. Gonzaga IM, et al. Clin Epigenetics 9:130, 2017.
3. Differential expression of mucosal trefoil factors and mucins in pediatric inflammatory bowel diseases. Hensel KO, et al. Sci Rep 4:7343, 2014.

Doc. 100-RM0183  
Rev. B