



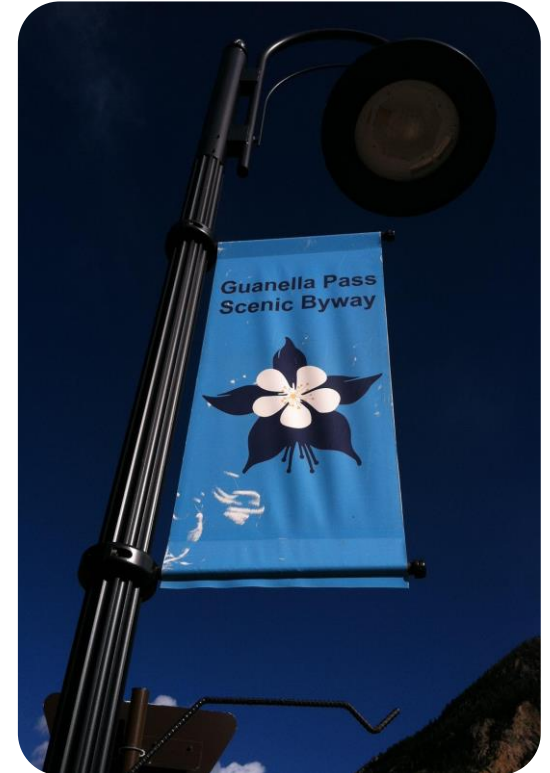
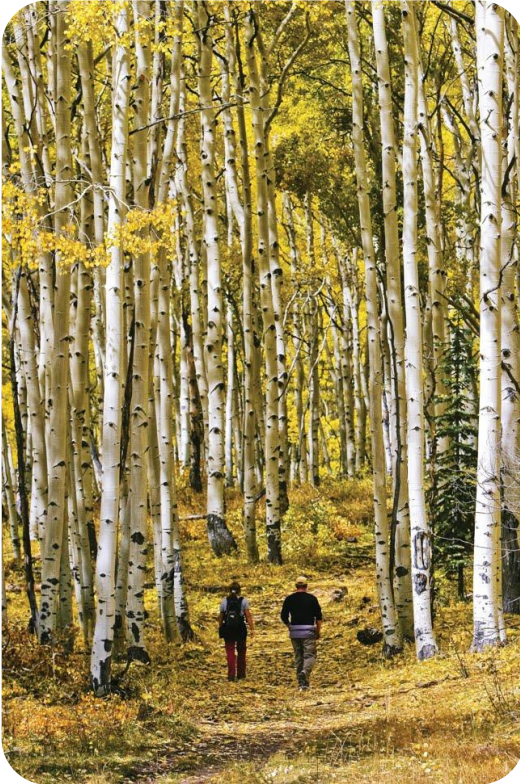
COLORADO
Department of Transportation



Colorado Scenic and Historic Byways



COLORADO
Department of Transportation



Colorado Scenic and Historic Byways



Colorado Scenic and Historic Byways History 1989~2019





- **26 Colorado Byways**
- **11 National Scenic Byways**
- **10 National Forest Scenic Byways**
- **2 BLM Backcountry Byways**

Scenic Byway





Transportation & Tourism

100 YEARS OF COLORADO STATE TRANSPORTATION HISTORY

**1908 -
\$2K 31
Signs**

**1913 -
Linen
Map**

**1918 -
Peak to
Peak**

**1919 -
3M People
\$10M**

**1920 -
1st USFS
Auto Camp**

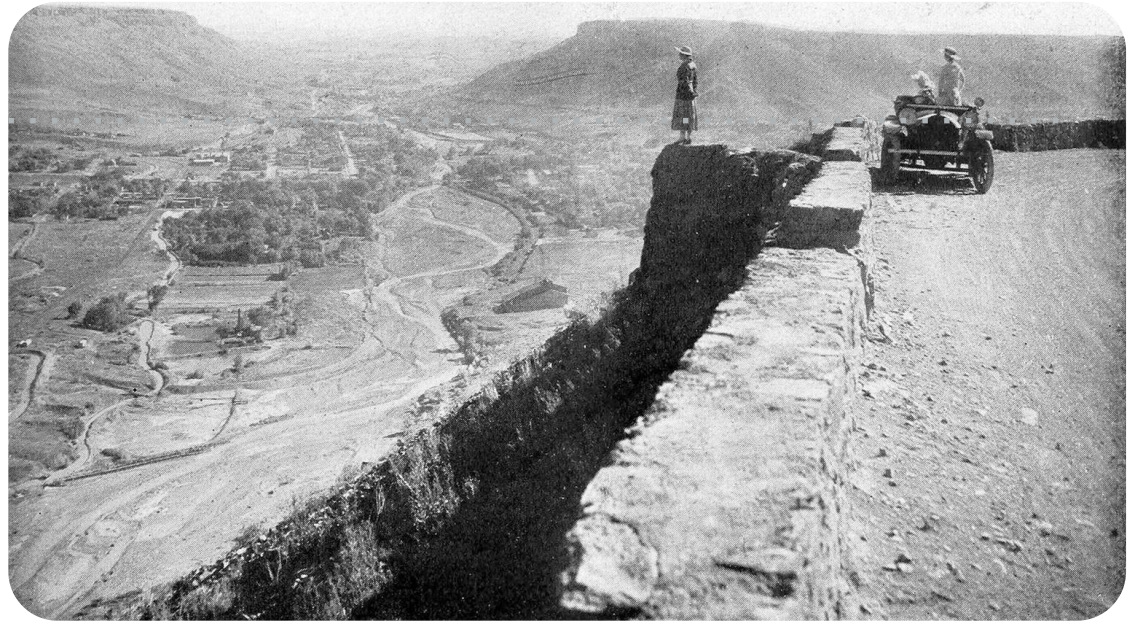
**1928 -
\$38M
Tourism**

**WELCOME TO
COLORFUL
COLORADO**





Transportation & Tourism



*I hope...our planners and builders will remember that highway beautification is more than a matter of planting trees and setting aside scenic areas. **The roads themselves must reflect, in location and design, increased respect for the natural and social integrity and unity of the landscape and communities through which they pass.** February 8, 1965, President Lyndon B. Johnson*



Transportation & Recreation 1952-1962



*Driving and walking for pleasure, swimming, and picnicking lead the list of the outdoor activities in which Americans participate, and **driving for pleasure is most popular** of all.*



Transportation & Recreation 1964 - 1983

1952 - Mission 66 included parkways

1958 - 1962 Outdoor Recreation Resources Review Commission

1964 - Recreation Advisory Council > Scenic Roads & Parkways

1966 - Scenic Roads & Parkways Study by the Dept. of Commerce

1967 - FHWA opened

1983 - ORRRC revisited 1962 Report

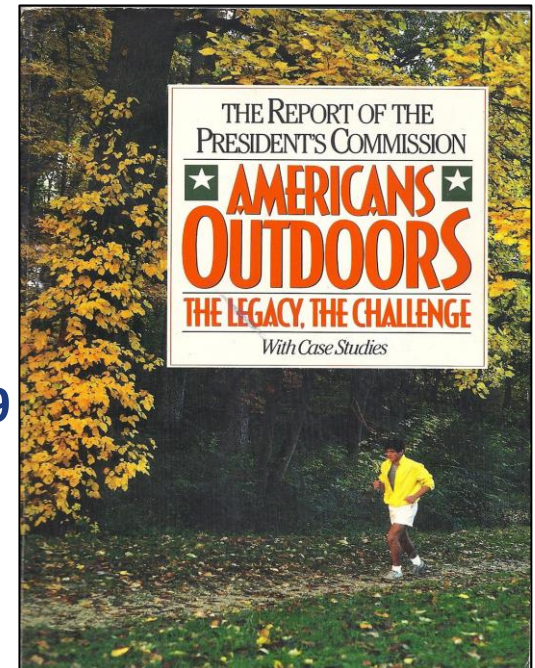
1987 – Final Report

1987 - National Forest Scenic Byways

1989 - BLM Back Country Byways

1992 - FHWA National Scenic Byways

2019 - Reviving America's Scenic Byways Act of 2019





Revitalizing Small Communities

Recognize

Protect

Promote





Revitalizing Small Communities

Recognize

Protect

Promote

Six Intrinsic Qualities

LAND

Scenic

Natural

Recreational

PEOPLE

Archaeological

Cultural

Historic





Revitalizing Small Communities

Recognize

Protect

Promote





Revitalizing Small Communities

Recognize

Protect

Promote

The Byway Story

Inventory

Assessment

Quality

Length/Width

Land Uses

Goals





Revitalizing Small Communities

Recognize

Protect

Promote





Revitalizing Small Communities

Recognize

Protect

Promote

40K Maps/Byway Guides

20K Rack Cards

6.9K Facebook

Exhibits

Presentations

Itineraries

Ethics

Leave No Trace



Revitalizing Small Communities

Evaluation

Economic Study

Data Analysis

Byway Surveys

Infographic

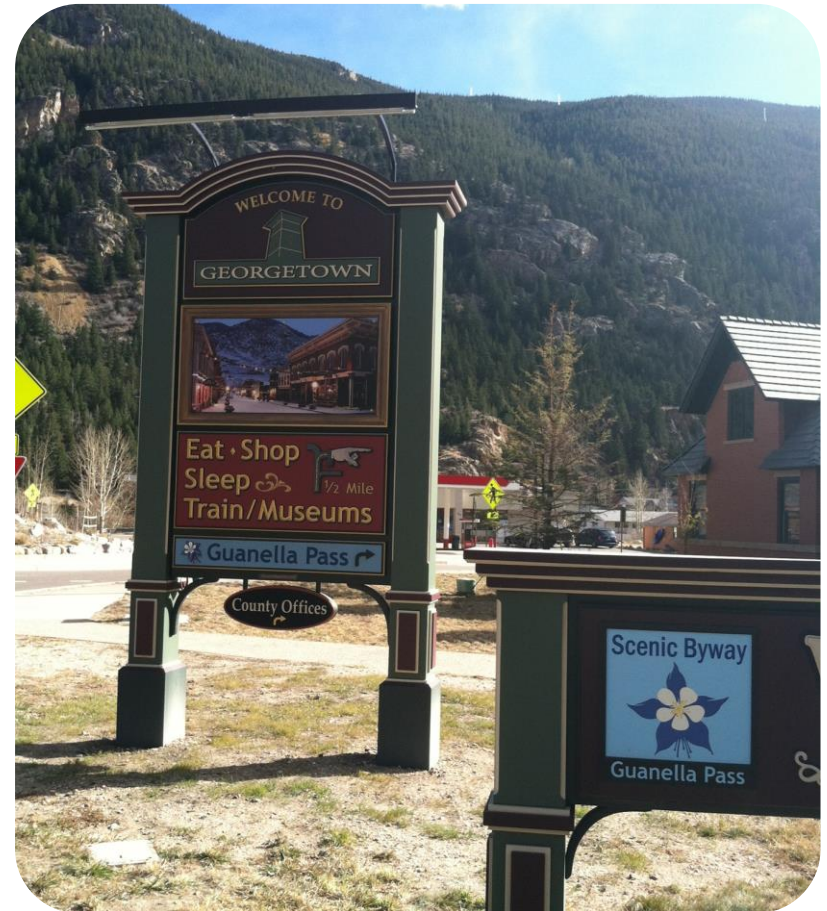




Revitalizing Small Communities

Economic Impacts 2009-2014 Top 10 Byways (\$000)

Mount Evans	\$200,496
Lariat Loop	\$93,325
San Juan Skyway	\$49,569
Guanella Pass	\$48,201
Trail of The Ancients	\$41,330
Colorado River	\$37,817
Collegiate Peaks	\$31,280
Highway of Legends	\$29,593
Trail Ridge Road	\$28,203
West Elk Loop	\$22,849





Revitalizing Small Communities

NSBP 1992-2012
\$22.4M

Planning
Conservation
Marketing
Preservation
Visitor

Infrastructure,
Gateways,
Trailhead





Revitalizing Small Communities

Trends

Outdoor
Recreation

Electric Vehicles

Heritage

Hot Springs





What is a Scenic Byway?

**Special –
Off the beaten
path**

Scenic

Culture

Stories





Alpine Loop

BLM Back
Country Byway

4WD

Seasonal

Motorized
Recreation Trail

Mining History





Cache la Poudre-North Park

NF Scenic Byway

Wildlife

Recreation

Water History

Canyon/Road





Collegiate Peaks

Geologic History
Mountains
River

Wildlife

Recreation

Mining





Colorado River Headwaters

Wildlife

Recreation

Water History

Community
History

Railroad





Dinosaur Diamond

Paleontology

Wildlife

Recreation

Museums

CO & UT





Flat Tops Trail

Ranching History

Sheep

Wilderness

Recreation

2 US Forests





Frontier Pathways

Recreation
Planning History

Ranching

El Pueblo

Ecology

Geology





Gold Belt Tour

BLM Back
Country Byway

Gold Mining
History

Railroads

Fossil Beds &
Dinosaurs





Grand Mesa

NF Scenic Byway

Recreation

Trails

History

Winery





Guanella Pass

NF Scenic Byway

**14er & 13er
Trailheads**

**2 Counties & 2
USFS**

**Historic Town &
Railroad**





Highway of Legends

NF Scenic Byway

Geology History links Legends

Spanish Peaks

Recreation

Coal Mining





Lariat Loop

Historic Lariat Trail

Bear Creek Canyon Scenic Drive

Denver Mountain Parks





Los Caminos Antiguos

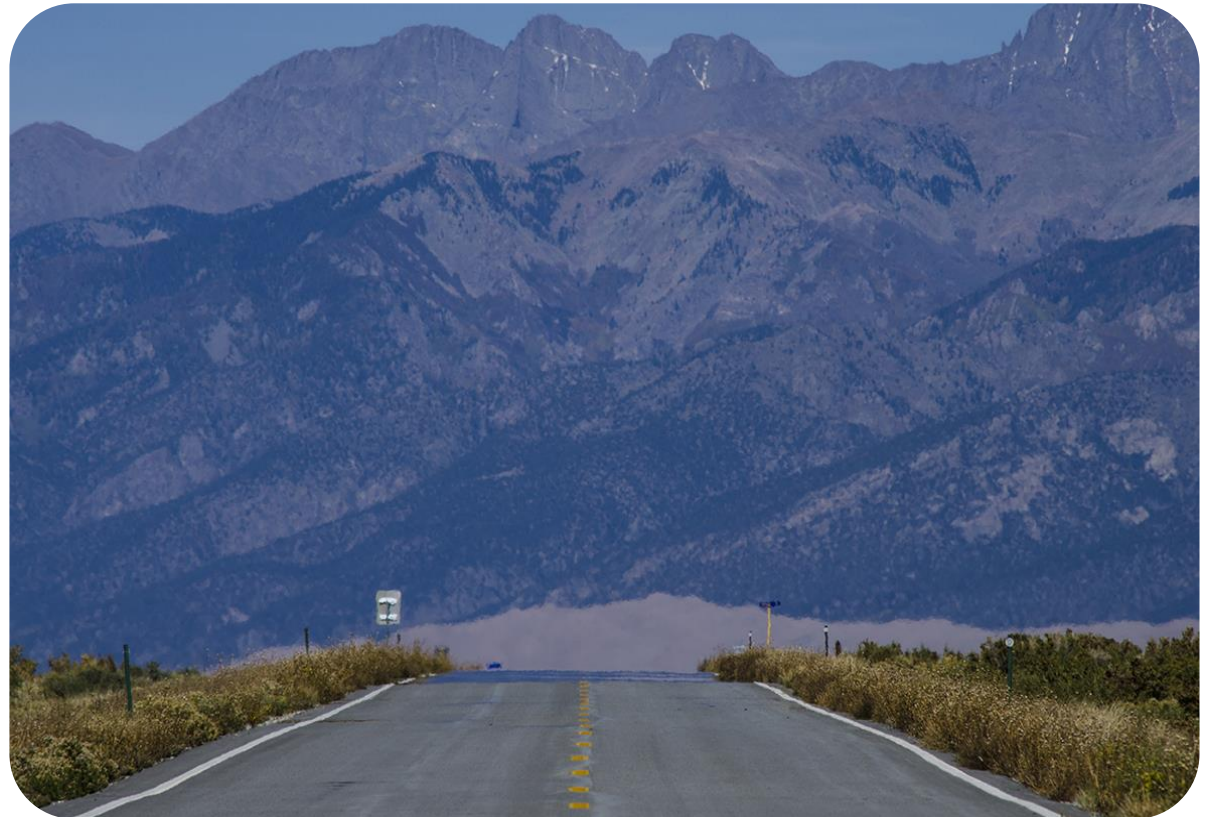
Spanish History

Sangre de Cristo
NHA

Great Sand
Dunes

Fort Garland

Wildlife





Mount Evans

NF Byway

ADA access to
14K

Mining Town

Wildlife

Ecology





Pawnee Pioneer Trails

National
Grasslands

Buttes

Wildlife

Small Towns





Peak to Peak

Historic Towns

Mining

Recreation

National Park

Gambling





San Juan Skyway

All-American
Road

Million Dollar
Highway

Dallas Divide

San Juan Forest





Santa Fe Trail

Historic Trail

Historic Sites

Bent's Fort

Fossils

Grassland





Silver Thread

NF Byway

Mining

Geology

Recreation

North Clear
Creek Falls





South Platte River Trail

Pony Express
Historic Trail

Other trails

Lincoln Highway

Railroad

Fort Sedgwick





Top of the Rockies

Mount Elbert &
Mount Massive

USFS & 3 Passes

Ghost Towns

Historic Sites

National Mining
Museum





Tracks Across Borders

Denver and Rio
Grande Railroad
(D&RG)

2 Scenic Trains

Native History

CO & NM





Trail of the Ancients

Canyon of the
Ancients NM

Hovenweep NM

Mesa Verde NP
World Heritage

Ute Tribal Park

Yucca House NM





Trail Ridge Road

All-American
Road

Overlooks

Visitor Centers

Two gateways

Historic Old Fall
River Road





Unaweeep Tabeguache

Colorado
Plateau

Mining & Flume

BLM Recreation

Driggs Mansion

Museums





West Elk Loop

NF Scenic Byway

National Park

Paved/Unpaved

Aspen Grove

Unique Towns

National Park



Thank you!



www.ColoradoByways.org

www.codot.gov/travel/scenic-byways

Lenore.bates@state.co.us