



By Ormesa



201 Growth Parkway Angola, IN 46703

Canadian Suggested Retail Price List in USD  
Jun-19

Phone: 260-665-2769

Fax: 260-665-3047

Email: [iim@mobility-usa.com](mailto:iim@mobility-usa.com)

[www.mobility-usa.com](http://www.mobility-usa.com)

Quote: \_\_\_\_\_

P.O. \_\_\_\_\_

### Bill To

Dealer: \_\_\_\_\_ Contact: \_\_\_\_\_

Address: \_\_\_\_\_

City: \_\_\_\_\_ State: \_\_\_\_\_ Zip: \_\_\_\_\_

Phone: \_\_\_\_\_ Fax: \_\_\_\_\_

Email: \_\_\_\_\_ Mark For: \_\_\_\_\_

### Ship To Same as Bill To \_\_\_\_\_

Dealer: \_\_\_\_\_ Contact: \_\_\_\_\_

Address: \_\_\_\_\_

City: \_\_\_\_\_ State: \_\_\_\_\_ Zip: \_\_\_\_\_

Phone: \_\_\_\_\_ Fax: \_\_\_\_\_

Email: \_\_\_\_\_ Mark For: \_\_\_\_\_

### Birillo Features and Specifications

- **Navy Frame** - height adjustable, made of steel, painted with non-toxic epoxy paint
- **Seat** - triangular to hold the pelvis (seat/back at a 90° angle); it is padded with wrap-around upholstery made of strong, washable plastic
- **Bumpers** - elastic bumpers to protect walls and protective balls on the upper ends of the rods
- **Wheels** - 3.2" fully-swiveling solid tires, rolling on ball-bearings, 2 with brakes
- **Handle Bar** - adjustable in both height and depth
- **Yellow Abduction Block** - adjustable to contain the pelvis
- **Due to the shape and colors, Birillo is accepted as a toy by the child** - this stimulates curiosity of exploring the surrounding environment

### Birillo Seat

Part Number	Description	Price (USD)	HCPCS
____ BIR-1	<b>Birillo Xs</b> Yellow Back & Teal Seat	\$1,225.00	E1399
____ BIR-2	<b>Birillo Sm</b> Red Back & Teal Seat	\$1,275.00	E1399
____ BIR-3	<b>Birillo Md</b> Yellow Back & Red Seat	\$1,325.00	E1399
____ BIR-4	<b>Birillo Lg</b> Teal Back & Red Seat	\$1,375.00	E1399



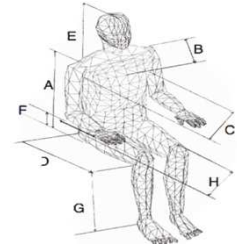
### Birillo Accessories

Part Number	Description	Price (USD)	HCPCS
____ BIR824-1	<b>Tray Xs</b>	\$350.00	K0108
____ BIR824-2	<b>Tray Sm</b>	\$350.00	K0108
____ BIR824-3	<b>Tray Md</b>	\$350.00	K0108
____ BIR824-4	<b>Tray Lg</b>	\$350.00	K0108
____ BIR860-1	<b>Concave Headrest Xs</b>	\$250.00	K0108
____ BIR860-2	<b>Concave Headrest Sm</b>	\$250.00	K0108
____ BIR860-3	<b>Concave Headrest Md &amp; Lg</b>	\$250.00	K0108

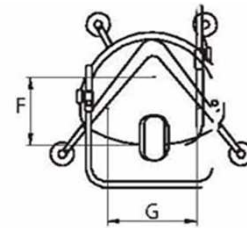
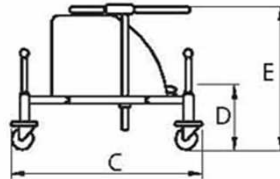
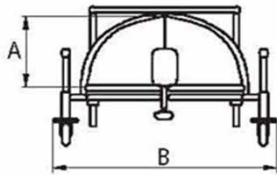


**Client Measurements**

A Back height \_\_\_\_\_ F Lower leg length \_\_\_\_\_  
 B Chest depth \_\_\_\_\_ G Head height \_\_\_\_\_  
 C Chest width \_\_\_\_\_ H Arm height \_\_\_\_\_  
 D Seat depth \_\_\_\_\_ Age: \_\_\_\_\_  
 E Seat width \_\_\_\_\_ Weight: \_\_\_\_\_

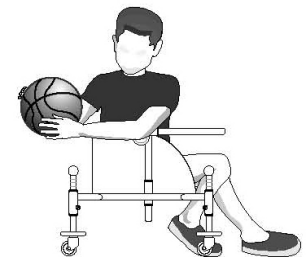
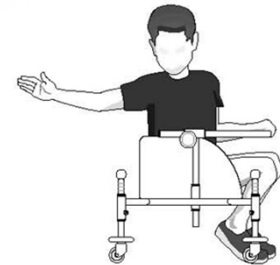


**Dimensions**



**Measurements in Inches**

Birillo	X Small	Small	Medium	Large
Max Capacity	66 lbs	88 lbs	110 lbs	132 lbs
Unit Weight	19 lbs	22 lbs	24 lbs	28 lbs
Turning Width	26	29	32	35
A	7	7.5	8	11
B	23	25.5	29	31
C	19.5	20	23	23.5
D	7.5 - 10.5	8.5 - 12	8.5 - 13	8.5 - 16
E	14 - 19.5	16 - 22	16.5 - 24	19.5 - 30
F	7	8	9	12
G	8.5	10	12	15



Note: All specification and prices are subject to change without notice. Prices listed are only valid if ordering with a pre gait trainer. The HCPCS codes provided are not intended to be billing or legal advice, rather Innovation In Motion's interpretation of the code definitions. Use of the codes provided does not ensure coverage or payment for the item. For coverage information, verify the policy of the appropriate payer. It is recommended to contact Innovation In Motion with any questions regarding proper ordering of the chair at 1-260-665-2769.