

## Description

Vector Electronics & Technology, Inc. cPCI resistive load boards provide a means to test power generated and cooling capability of cPCI systems.

Available is either 3U or 6U, these load boards function to test a system's cooling capability with a fixed 25W resistive load that generated necessary heat to verify chassis cooling and locates hot-spots in the chassis so airflow can be adjusted.

## Features:

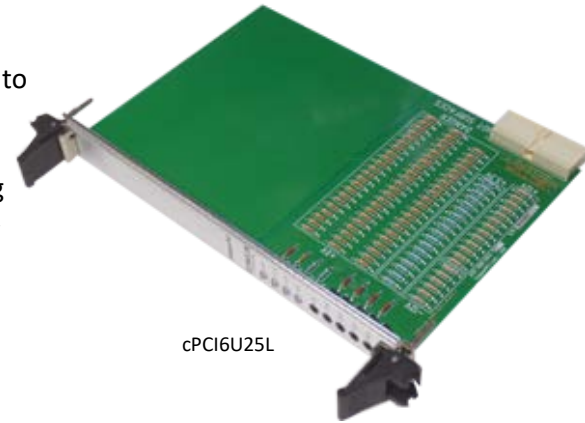
- ❖ Conforms to PICMG electrical and mechanical specifications for J1 power and ground only
- ❖ Fixed 25 watt load with test points to measure +5V, +3.3V, +12V, -12V & ground through P1 of the cPCI backplane
- ❖ Board thickness is standard 0.062", UL recognized 94V-0 and FR-4 or equivalent
- ❖ 3U X 160 or 6U X 160 J1 connection to power & ground with 25-row, 110-pin 2MM Hard Metric connector
- ❖ Standard front panel width of 4HP (0.80") wide
- ❖ 3U board: lower Type IV injector/ejector only, captive sleeve & screw on top of front panel
- ❖ 6U board: Top/bottom pair of Type IV injector/ejectors.

## Board Specifications

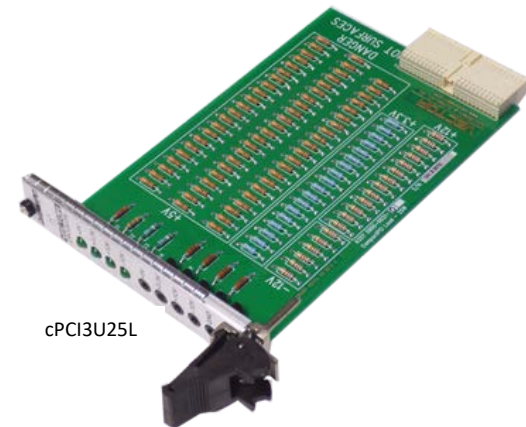
- ❖ 2-layer stripline design
- ❖ 2 oz. copper power and ground layers
- ❖ 0.062" thick PCB, UL recognized 94V-0 and FR-4 or equivalent

## Mechanical Specifications

- ❖ CPCI3U25L is 3U x 160mm
- ❖ CPCI6U25L is 6U x 160mm
- ❖ 4HP (0.80") wide



cPCI6U25L



cPCI3U25L



cPCI3U25L and cPCI6U25L front panel detail

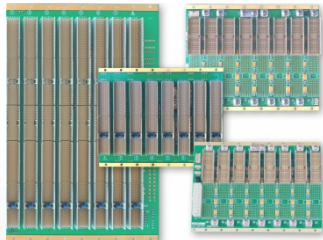
## Power Rating

| Voltage | Watts | Current Rating |
|---------|-------|----------------|
| +5V     | 35W   | 7.0A           |
| 3.3V    | 23.1W | 7.0A           |
| +12V    | 8.4W  | 0.7A           |
| -12V    | 8.4W  | 0.7A           |

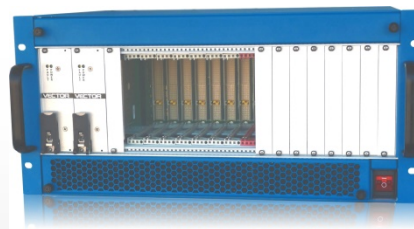
## Ordering Information

| Order Number | Description   |
|--------------|---|
| CPCI3U25L    | CPCI Resistive load board for 3U x 160MM chassis or Subrack |
| CPCI6U25L    | CPCI Resistive load board for 6U x 160MM chassis or Subrack |

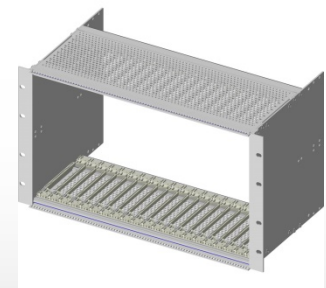
## Related Products



cPCI Backplanes



cPCI System Enclosures



cPCI Subracks