

MAKE THIS A *Memorial* W

Invest in a lifetime of pleasure 60 Miles

ELK LAKE SHORES

YEAR 'ROUND PLEASURE SITE

Kentucky's finest private resort area welcomes you as a member. Come to Elk Lake Shores, Owenton, Kentucky, this week end. Bring the family. Spend the day. See for yourself why this year-round vacation site is 80% sold. See why so many Greater Cincinnatians have chosen Elk Lake as their lifetime vacation retreat. There are choice waterfront and lakeview lots available on reasonable terms. Choose yours this week and plan to enjoy all the fun that comes

with living in this 1200-acre resort wonderland! Fishing, boating, water skiing, swimming or just plain loafing—it's all waiting for you and your family.



DIRECTIONS:

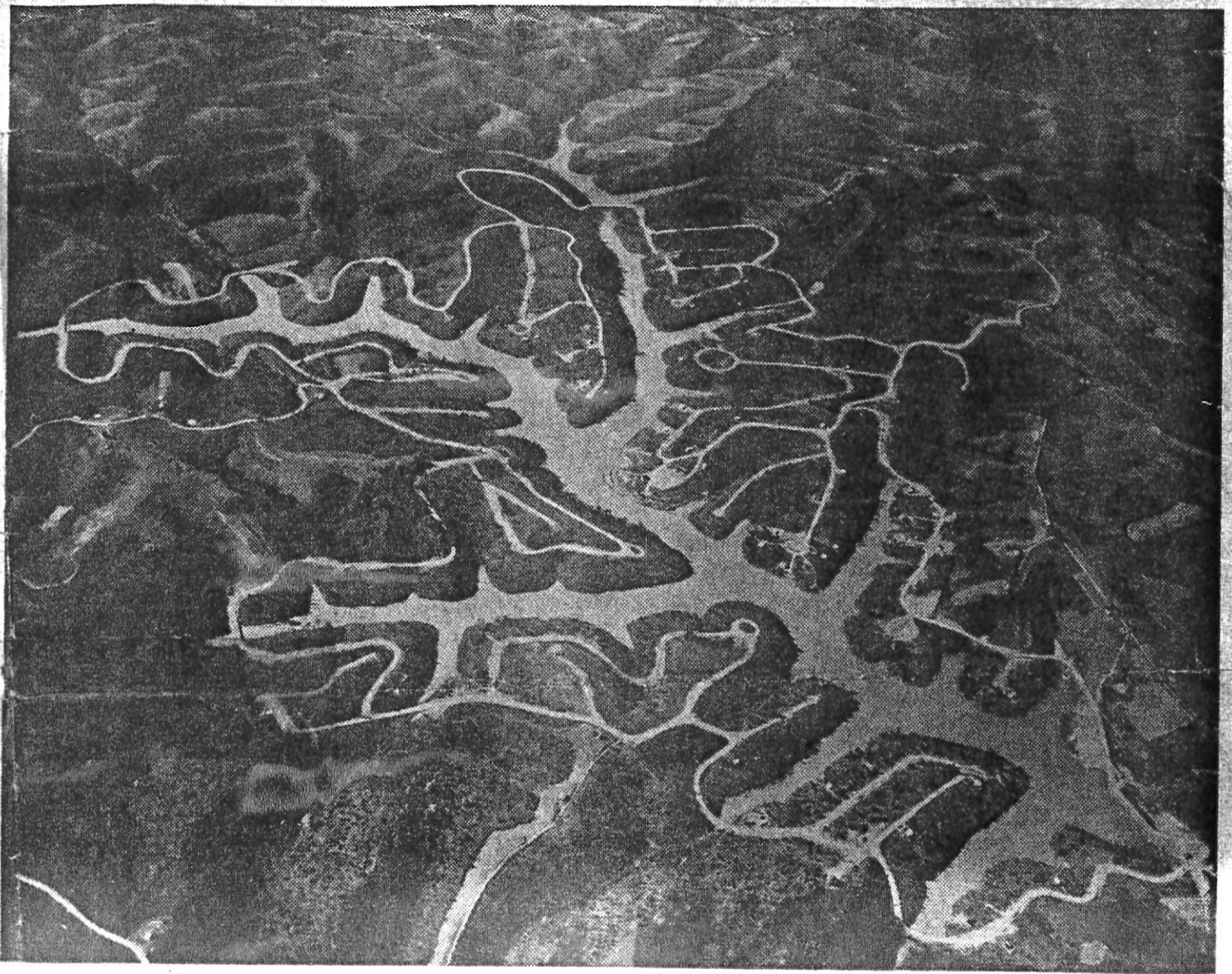
Take the New Interstate 75 South from Covington to Dry Ridge . . . at Dry Ridge . . . take Route 22 for about 18 miles to Owenton or watch for the ELK LAKE SHORES signs.

ELK
LAKE
SHORES

WEEK END YOU'LL NEVER FORGET!

Files from Cincinnati!

1963



Beautiful Elk Lake with over 14 miles of shoreline, is situated in the beautiful rolling hills of Kentucky. The many attractions include: all-weather roads, kiddie pool and playground, equipped picnic area, beach areas, concession building, boat marina, community boat docks, and model cottages for your inspection.



- 255-Acre Lake
- Model Homes
- Electricity
- Wooded Picnic Area
- Recreation Area
- Central Water Supply (under construction)

