

# Mobile Refrigeration Trainer

Educational Training Equipment for the 21st Century

Bulletin 238R

## H-CRT-1 Commercial Refrigeration Trainer

The Hampden **MODEL-H-CRT-1** Commercial Refrigeration Trainer contains two evaporators, which may be operated singly or in parallel. Three types of liquid control devices are included: capillary tube, thermostatic expansion valve, and an automatic expansion valve. Sight glasses at the inlet and outlet of the evaporators and condenser allow students to monitor the changes in refrigerant state. The unit also includes pressure gauges, thermometer wells, temperature and pressure controls, heat exchanger, receiver, oil separator, and accumulator. Factory-charged with R-134a HFC refrigerant. Furnished complete with operating instructions, experiment and teacher's manuals.

The Hampden **MODEL H-CRT-1** Commercial Refrigeration Trainer consists of refrigeration components completely piped and wired for demonstration of Commercial Air Conditioning and Refrigeration Systems including:

- A. Domestic Refrigerators
- B. Freezers
- C. Multiple Compartment Refrigerators
- D. Air Conditioners

### Options

**H-RST-DMP** Digital Meter Package

**H-CRT-FP-18E** Fault Package - Electrical

**H-CRT-FP-M** Fault Package - Mechanical

**H-CRT-TC** Digital Temperature Module with Thermocouples

**H-CRT-1-VC** Variable Compressor Option

**H-CRT-1-CDL** Commercial Refrigeration Trainer with Computer Data Logging package

**H-CRT-1-CDL-LT** Commercial Refrigeration Trainer with Computer Data Logging Sensors only (No I/O Modules or Software)

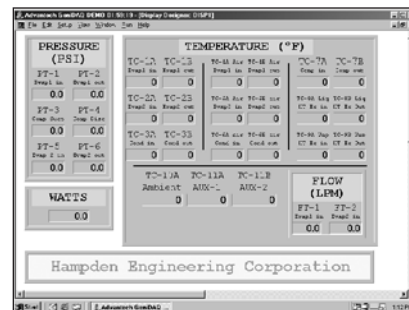
**H-RST-DMB** Digital Manifold with Bluetooth

*Options must be specified at time of original order.*

Power Required: 120V AC 1Ø 60Hz



**MODEL H-CRT-1** shown with  
**H-RST-DMB** Digital Manifold with Bluetooth  
Dimensions: 88"H x 72"W x 31"D - Shipping Weight: 1,000 lbs



Sample Screenshot of Hampden CDL Software

All Hampden units are available for operation at any voltage or frequency



**Hampden**  
ENGINEERING CORPORATION

080823