

MIND

Lecture

A group of young adults are sitting around a campfire in a desert canyon at sunset. The campfire is made of stones and is burning brightly. The group consists of about ten people, mostly young men, dressed in casual outdoor clothing. They are sitting on wooden benches or logs. The background shows a vast desert canyon with red rock formations under a warm, orange sky. The text "Necessity and Importance of Mind Education" is overlaid in white, bold, sans-serif font across the center of the image.

Necessity and Importance of Mind Education

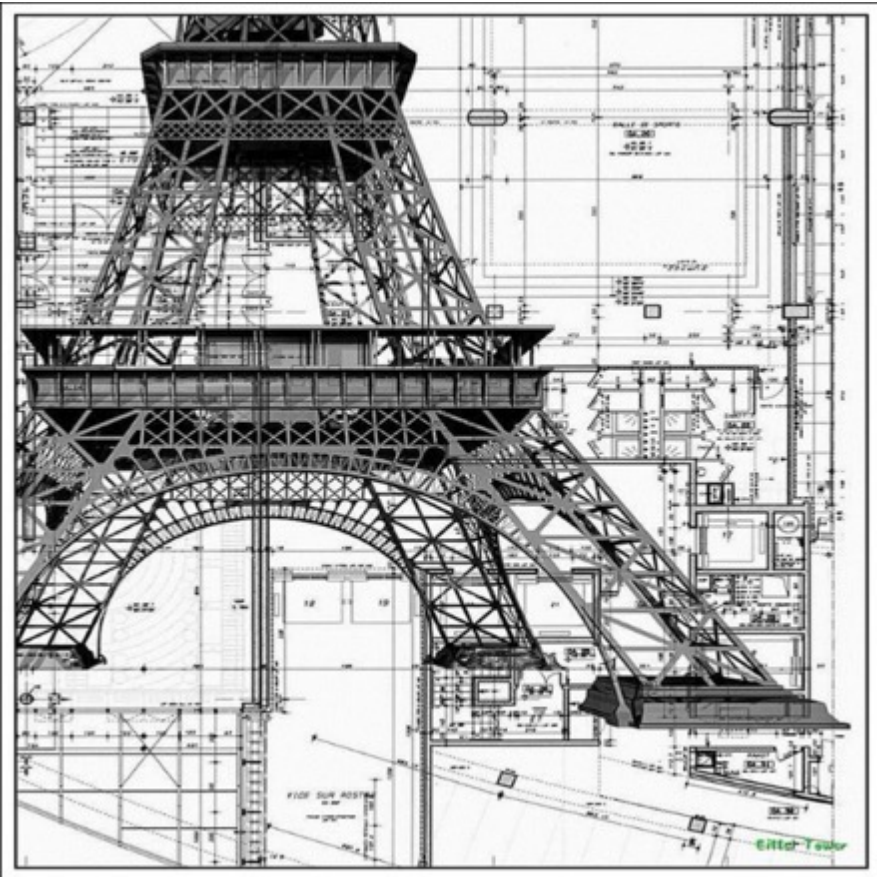
Necessity and Importance of Mind Education



You can watch the Sample Lecture
→ https://youtu.be/j2_cKQ_yeXs

Necessity and Importance of Mind Education

► Blueprint of mind



The Eiffel Tower

- Architect: Gustave Eiffel
- Constructed: 1887 ~ 1889
by 300 workers
- Heights: 324m (= 81-story building),
tallest structure in Paris

Shortcomings of Contemporary Education

- Comparison between School and Society: 'Indoor pool vs. Sea'-



Shortcomings of Contemporary Education

► Comparison between School and Society: 'Indoor pool vs. Sea'-



- School life is like an indoor swimming pool with not much trouble.
- School life is evaluated according to grades.

Shortcomings of Contemporary Education

- ▶ Comparison between School and Society: 'Indoor pool vs. Sea'-
 - Life in society is like an ocean that is highly unpredictable.



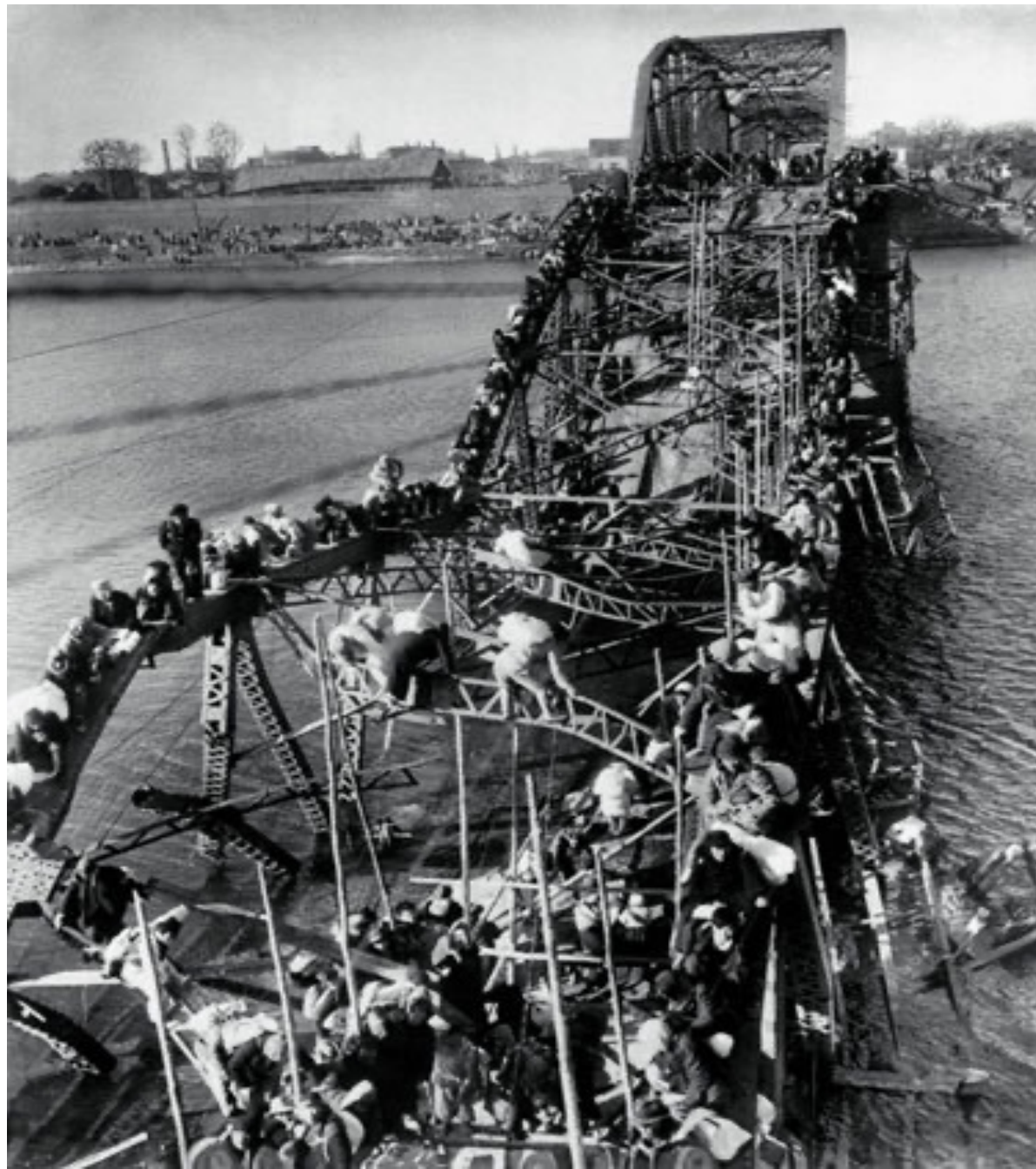
Necessity and Importance of Mind Education

- ▶ **A person being carried away by waves vs a person who enjoys surfing on the wave**
- **A person who overcomes different turbulences in life**
- **A person who overcomes and enjoys various difficulties and problems that occur in social life**



Necessity and Importance of Mind Education





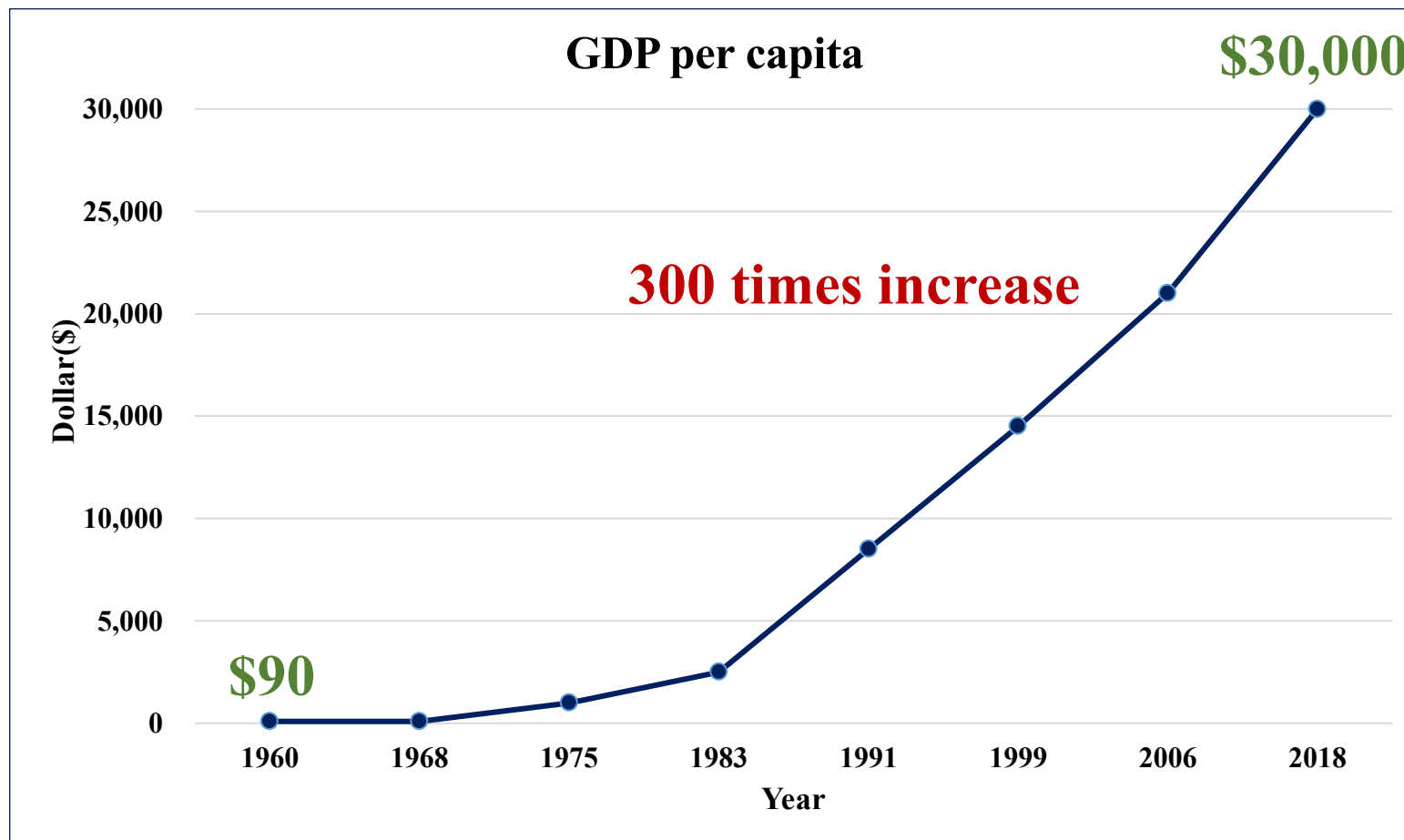




Necessity and Importance of Mind Education

■ GDP per capita

■ Over the past 54 years, the value for the GDP per capita has fluctuated over 300 times between \$90 in 1961 and \$30,000 in 2018.

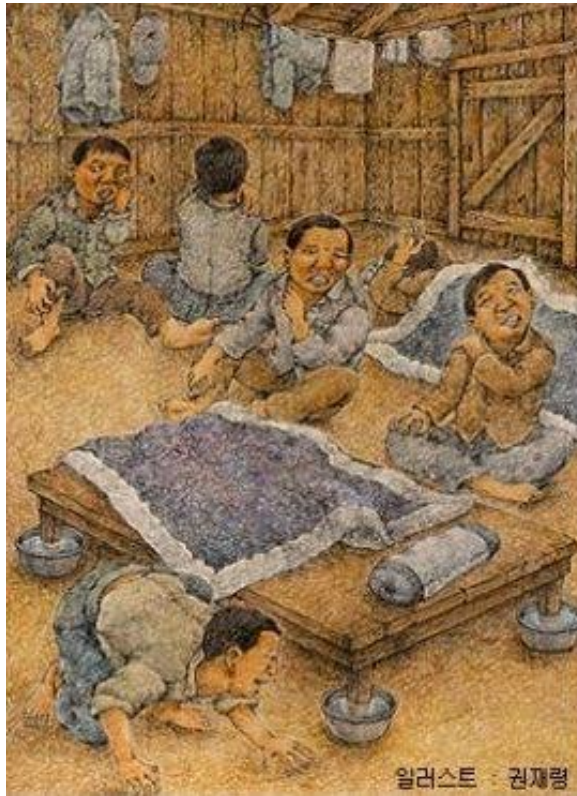


How did Korea develop so fast?

Human Resources

Necessity and Importance of Mind Education

- ▶ Case of Proper Mind: Ju-Young Jung, Founder of HYUNDAI
Poor youth workers of Gangwon backwoods at Incheon bay



Necessity and Importance of Mind Education

▶ #1Case of Proper Mind: Jung-Ju Young, Founder of HYUNDAI



- Bedbug Mentality
- “Have you ever tried?”
- “You’re even more worthless than a bedbug!”



Construction Project in The Middle East

Impossible

1. It's the **desert**

Inferior

2. It's extremely **HOT**

We can not!

3. There is **no water**



Possible

1. **No** rain, **Many** sand, pebbles

BEST

2. **Work** at **night**

Heaven is

3. We can bring the **water**

Necessity and Importance of Mind Education

- ▶ #2Case of Proper Mind: Konosuke Matsushita, Founder of Panasonic



Necessity and Importance of Mind Education

▶ #3Case of Proper Mind: Interview with reporters



3 Gifts from mother

1. Severe Poverty

-- Diligence and How to save

2. Weak Health

-- Importance of health

3. Lack of education

-- Asking to anybody to learn

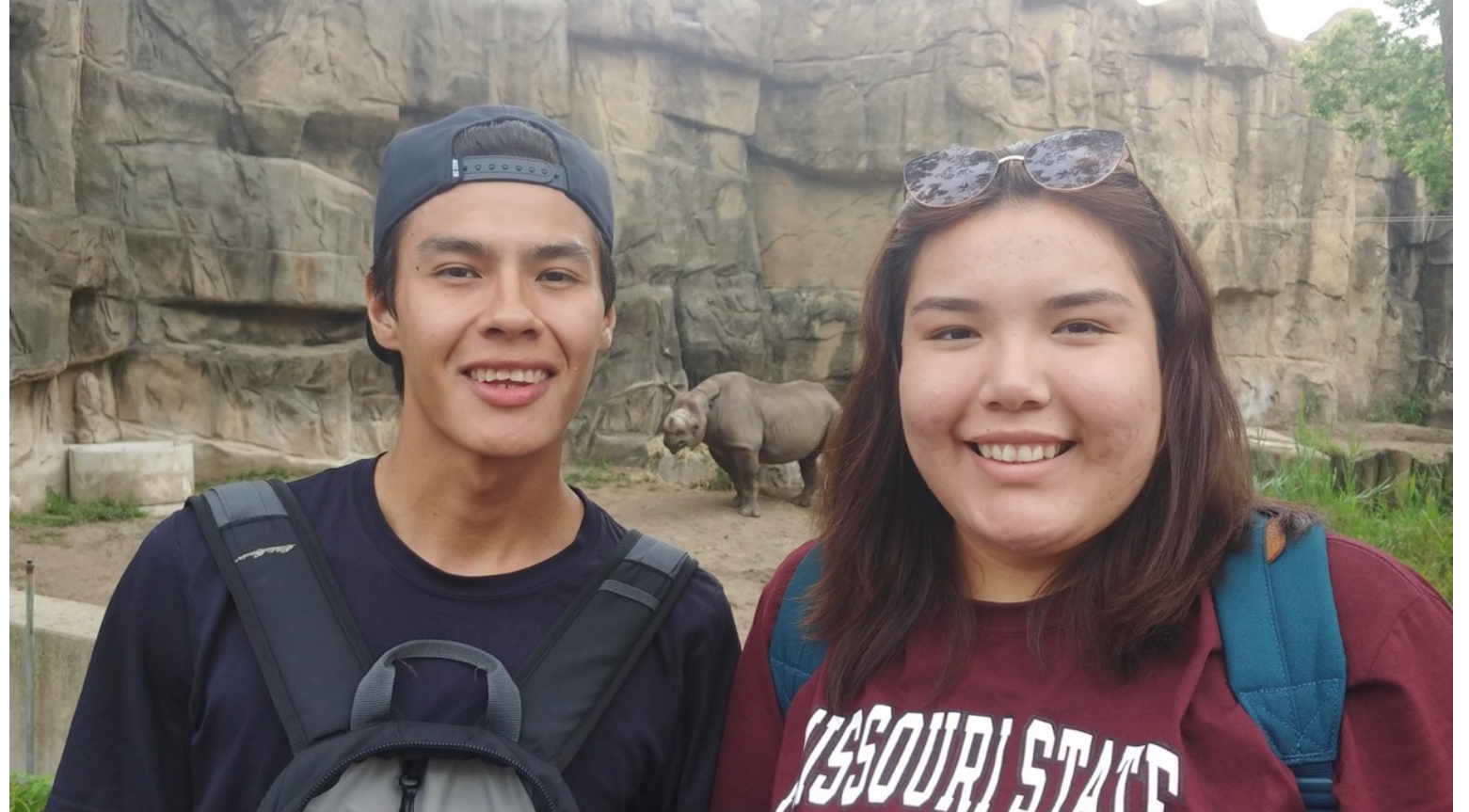
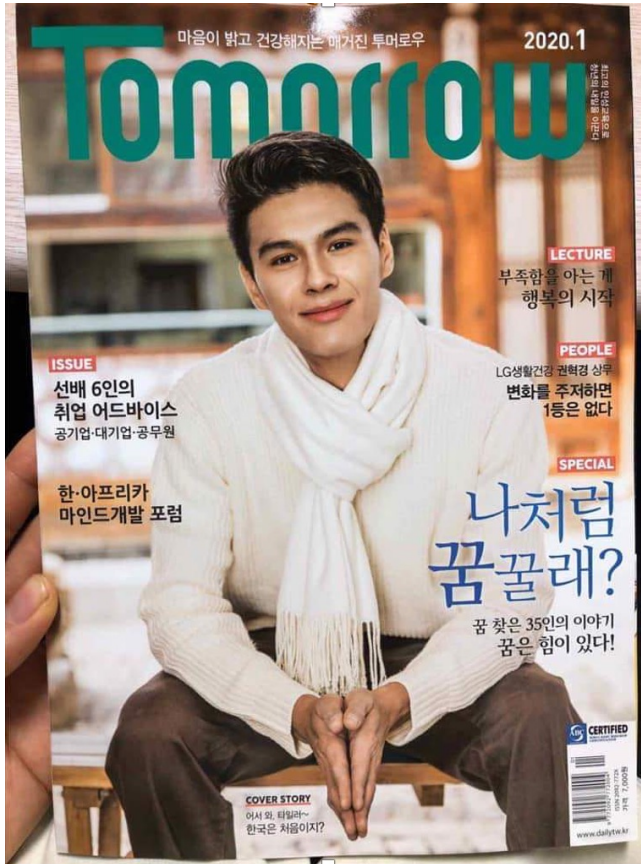
Necessity and Importance of Mind Education

- ▶ #2Case of Proper Mind: Konosuke Matsushita, Founder of Panasonic



Necessity and Importance of Mind Education

- ▶ #3Case of Proper Mind: Tyler Moody, Nelson House Manitoba Canada





Fishbowl : 5~8cm

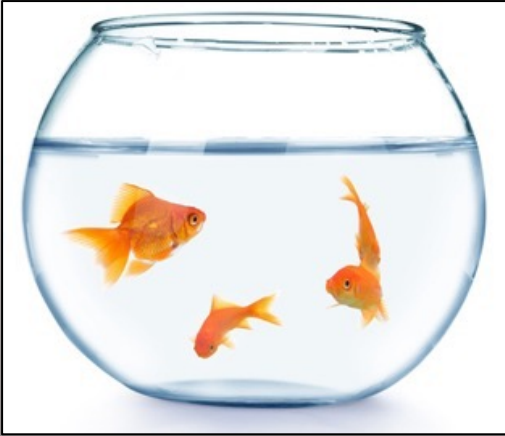
Pond : 15~25cm



River : 90~120cm



Koi's Law



Fishbowl: 5~8cm



Pond: 15~25cm

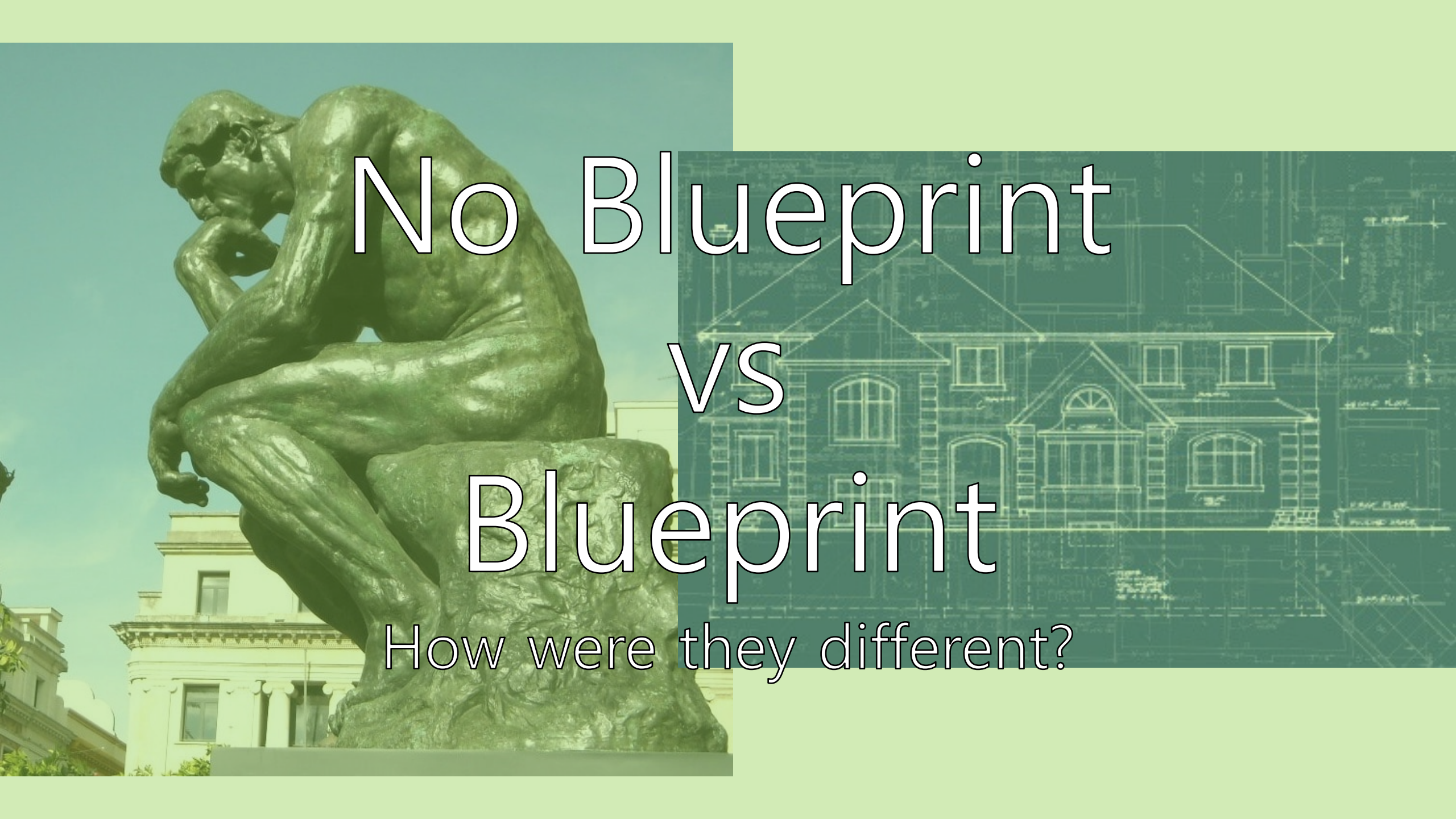


River: 90~120cm



Mind Recreation!

MIND to ACTION



No Blueprint vs Blueprint

How were they different?

More info?

John Park

405-535-9553