

**Retail Consulting and Market Research**



*Troy Town Center,  
Troy, Michigan*



*Houston, Texas*



*Charleston,  
South Carolina*



*Mackinac Island,  
Michigan*



*Las Cruces,  
New Mexico*



*Carmel, Indiana*

- Harbour Town, Hilton Head Island: 2018
- Pineland Prairie, Stuart, Florida: 2018
- Downtown Jackson, Michigan: 2017
- Mackinac Island, Michigan: 2017
- Windward Town Center, Muskegon, Michigan: 2017
- Monroe, Michigan: 2017
- Delray Beach, Florida: 2017
- Wayne State University, Detroit, Michigan: 2017
- Gulfstream Village, Miami, Florida: 2017
- South Shore, Hamburg, New York: 2017
- Evans Farm, Ohio: 2017
- Warren Town Center, Michigan: 2017
- Wilsonville, Oregon: 2017
- Palm Desert, California: 2017
- Memphis Medical District, Memphis, Tennessee: 2017
- Downtown Conway, South Carolina: 2017
- International Boulevard Neighborhood, Tukwila, Washington: 2017
- Seattle Central Area, Washington: 2017
- Highland Park, Michigan: 2017
- Troy Town Center, Troy, Michigan: 2016-2017
- Sammamish, Washington: 2016-2017
- Niagara-on-the-Lake, Ontario, Canada: 2016-2017
- Cuyahoga Falls, Ohio: 2016-2017
- Warren, Michigan: 2016
- MacDonnell Heights, Poughkeepsie, New York: 2016
- New Port Richey, Florida: 2016
- Albuquerque, New Mexico: 2016
- Charleston, South Carolina: 2016
- Old English Square, Holbrook, Massachusetts: 2016
- Chatham Park, Pittsboro, North Carolina: 2016
- Saddle Creek, Omaha, Nebraska: 2016
- Bangor Township, Michigan: 2016
- Frankenmuth, Michigan: 2016
- Ferndale, Michigan: 2016
- Detroit Fairgrounds: 2016
- Conyers, Georgia: 2016
- New Orleans, Louisiana: 2016
- Infinite Energy Center Campus, Duluth, Georgia: 2016
- Princeton Village, Miami, Florida: 2016
- Omaha, Nebraska: 2016
- Lakeway Town Center, Lakeway, Texas: 2016
- Grosse Pointe, Michigan: 2016
- Southfield Town Center, Southfield, Michigan: 2016
- Pontiac, Michigan: 2016
- Hazel Park, Michigan: 2016
- Renn Farm, Frederick, Maryland: 2016
- Las Cruces, New Mexico: 2016
- Summers Corner, East Edisto, South Carolina: 2016
- North Palm Beach Village: 2016
- Shelby Town Center, Shelby Township, Michigan: 2016
- Longwood, Florida: 2015
- Helena, Montana: 2015
- Ferndale, Michigan: 2015
- Whitehall Village, Delaware: 2015
- Perdido Key, Florida: 2015
- Fort Smith, Arkansas: 2015
- Amelia Park, Amelia Island, Florida: 2015
- Avenir, Florida: 2015
- Bonita Springs, Florida: 2015
- Spokane, Washington: 2015
- Chattahoochee, Georgia: 2015
- Chelsea, Michigan: 2015
- Londonderry, New Hampshire: 2015
- Dearborn, Michigan: 2015
- Deerfield Beach CPAT, Florida: 2015
- Dowagiac, Michigan: 2015
- Evans Town Center, Columbia County, Georgia: 2015
- Langtree Lake Norman, Mooresville, North Carolina: 2015
- Rosemary Beach, Florida: 2015
- South Ft. Wayne, Indiana: 2015



*Big Sky Resort,  
Montana*



*Wasilla, Alaska*



*Easton Town Center,  
Columbus, Ohio*



*Normal, Illinois*



*Hotel Walloon,  
Walloon, Michigan*

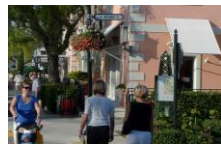
- Tucker-Northlake Community Improvement District, Tucker, Georgia: 2015
- Uptown Normal, Illinois: 2015
- Village Center, Deerfield Beach, Florida: 2015
- Winter Park, Florida: 2015
- Vacaville, California: 2015
- Adrian, Michigan: 2014
- Alafaya, Florida: 2014
- Big Sky Resort, Montana: 2014
- Boyne Mountain Resort, Boyne, Michigan: 2014
- Columbia, Maryland: 2014
- Corunna, Michigan: 2014
- Daytona Beach, Florida: 2014
- Dover, New Hampshire: 2014
- Downtown Holland, Michigan: 2014
- Downtown, Rosemary District, MLK Corridor & St. Armands Circle, Sarasota, Florida: 2014
- Farmington, Michigan: 2014
- High Street, Atlanta, Georgia: 2014
- Historic Richmond Town, Staten Island, New York: 2014
- Houston, Texas, Regent Square: 2014
- Indian School Road, Phoenix, Arizona: 2014
- Kennesaw, Georgia: 2014
- Norwalk, Connecticut: 2014
- Panama Pacifica, Panama, South America: 2014
- Sarasota, Florida: 2014
- Seabrook, Washington: 2014
- South Bend, Indiana: 2014
- St. Elmo's Village, Chattanooga, Tennessee: 2014
- Summers Corner, East Edisto, South Carolina: 2014
- The Banks, Cincinnati, Ohio: 2014
- The Village at Grand Traverse Commons, Traverse City, Michigan: 2014
- Town Center Area Community Improvement District, Atlanta, Georgia: 2014
- West Side Corridors, South Bend, Indiana: 2014
- Winter Haven, Florida: 2014
- Malbis Plantation, Daphne, Georgia: 2013
- Butler Plaza, Gainesville, Florida: 2012-2013
- Woodward Corridor Master Plan for Private Development Company, Detroit, Michigan: 2012
- Coconut Grove, Florida: 2012
- Memphis, Tennessee: 2012
- Grand Rapids Commercial Master Plan, Michigan: 2012
- Royal Park Hotel, Toronto, Ontario: 2012
- Abacoa Town Center, Jupiter, Florida: 2012
- Des Moines, Iowa: 2012
- Carlisle, Pennsylvania: 2012
- Carmel, Indiana: 2012
- Woodstock, Georgia: 2012
- King of Prussia, Pennsylvania: 2012
- Nine Springs, Fitchburg, Wisconsin: 2012
- Pier 57, New York, New York: 2012
- West Ocala, Florida: 2012
- Daytona Beach, Florida: 2012
- Lexington Depot District, Lexington, North Carolina: 2012
- Downtown Santa Cruz, California: 2011
- Fresno, California: 2011
- Fulton Mall, Fresno, California: 2011
- Daytona Beach, Florida: 2011
- Volcano Heights Town Center, Albuquerque, New Mexico: 2011
- Southfield, Michigan: 2011
- Interlochen, Green Lake Twp., Michigan: 2011
- Narcoossee Road Corridor, Osceola County, Florida: 2011
- East Highway 192 Corridor, Osceola County, Florida: 2011
- West Central District, Albuquerque, New Mexico: 2010
- Martineztown Commercial District, Albuquerque, New Mexico: 2010
- International District, Albuquerque, New Mexico: 2010
- Coligny, Hilton Head Island, South Carolina: 2011
- Mesquite, Texas: 2011
- Master Plan Peer Review, Galveston, Texas: 2011
- Maxwell Boulevard, Montgomery, Alabama: 2011
- Windsor, Connecticut: 2011
- Butler Plaza, Gainesville, Florida: 2011
- Port Sanilac, Michigan: 2010
- Tyson's West, Virginia: 2010
- Londonderry, New Hampshire: 2010-2012



*Alexandria, Virginia*



*Wixom, Michigan*



*Naples, Florida*



*Storrs Center, Connecticut*



*Detroit, Michigan*

- Historic Market Hall, Charleston, South Carolina: 2010
- GardenWalk Center, Anaheim, California: 2010
- Kailua-Kona, Hawaii: 2010
- Fantasy Springs Resort Casino, Indio, California: 2009-2010
- City of Houston, Texas: 2010
- King Street Long-Range Retail Plan, Alexandria, Virginia: 2010
- West Palm Beach, Florida, TCRPC: 2010
- City of Wasilla, Alaska: 2009
- Whitehall, Delaware: 2009
- Daybreak Town Center, South Jordan, Utah: 2010
- City of Holland, Michigan: 2009
- Reston Heights, Virginia: 2010
- Revelstoke, B.C., Canada: 2010
- Grand Rapids, Michigan: 2010
- King Street Long Range Retail Plan, Alexandria, Virginia: 2009
- Naples, Florida: 2009
- Lacey Gateway Town Center, Lacey, Washington: 2009
- New Smyrna Beach, Florida: 2009
- Wildwood, Missouri: 2009
- Palm Beach Gardens, Florida: 2009
- Chesterfield Town Center, Chesterfield, Missouri: 2009
- Public Market Analysis: Kitchener, Ontario: 2009
- Jupiter, Florida: 2009
- Potomac Yard Impact Study, Alexandria, Virginia: 2008
- Clarkstown, New York: 2008
- New Town at Liberty, Liberty, Missouri: 2008
- Mixson Town Center, North Charleston, South Carolina: 2008
- Beverly Hills, Michigan: 2008
- Saugatuck, Michigan: 2008
- Van Dorn Commercial Study, Alexandria, Virginia, 2008
- Downtown Disney, Orlando, Florida: 2008
- City of Plano, Texas: 2008
- Downtown City Center, City of Carmel, Indiana: 2008
- Griffin Park, Greenville, South Carolina: 2008
- East Lansing, Michigan: 2008
- Fauberg Boisbriand, Montreal, Quebec: 2008
- Bossier Town Center, Bossier Parish, Louisiana: 2008
- Yohoqua Town Center, Lake Toho, Florida: 2008
- City of Rio, Florida: 2008
- Lancaster, Pennsylvania: 2008
- Bradford Health Services, Madison, Alabama: 2008
- City of Alexandria, Virginia: 2008
- 751 Village, Durham, North Carolina: 2008
- Charleston, South Carolina: 2008
- NASA Site Redevelopment, Downey, California: 2008
- Kirkland Parkplace, Kirkland, Washington: 2008
- Clarksburg Town Center, Clarksburg, Maryland: 2008
- South Chapel Hill Town Center, Durham, North Carolina: 2008
- Long Savannah Plantation, Charleston, South Carolina: 2007
- Village at Hendrix, Conway, Arkansas: 2007
- West Palm Beach Mall, West Palm Beach, Florida: 2007
- Punta Cacique, Costa Rica: 2007
- Tuxedo and Tuxedo Park, New York: 2007
- Sprague/Appleyway Corridor Revitalization, Spokane Valley, Washington: 2007
- Raleigh-Durham, North Carolina: 2007
- Downtown Airpark, Oklahoma City, Oklahoma: 2007
- West Ocala, Florida: 2007
- Noah's Ark Town Center, St. Charles, Missouri: 2007
- Gulfport Highlands, Gulfport, Mississippi: 2007
- East Beach Town Center, Norfolk, Virginia: 2007
- Portland Development Center, Portland, Oregon: 2007
- The Petroglyphs, Albuquerque, New Mexico: 2007
- Trinity River Properties, Dallas, Texas: 2007
- Dahlonega, Georgia: 2007
- Hampton Roads Crossing, Suffolk, Virginia: 2007
- Hutto Town Center, Hutto, Texas: 2007
- Dardenne Prairie, Missouri: 2007
- Newcastle Town Center, Newcastle, Oklahoma: 2007
- Mariner's Cove Master Plan, Lake Toho, Florida: 2007
- River Lights Town Center, Wilmington, North Carolina: 2007
- River District Village Center, Liberty Lake, Washington: 2007
- Jackson Memorial Medical Center, Miami, Florida: 2007

North Carolina Research Campus, Kannapolis, North Carolina: 2006  
 Santa Ana Town Center, California: 2006  
 Long-term Planning & Development, Central Florida Panhandle: 2006  
 Palm Beach County, Florida: 2006  
 Proposed Town Center, Baton Rouge, Louisiana: 2006  
 Taylor Crossings, Idaho Falls, Idaho: 2006  
 Melon Valley, Hurricane, Utah: 2006  
 SW Albuquerque regional Study, Albuquerque, New Mexico: 2006  
 Bannister Mall, Kansas City, Missouri: 2006  
 City of Ballwin, Missouri: 2006  
 Water's Edge Town Center, Athens, Georgia: 2006  
 Erie Station II, West Henrietta, New York: 2006  
 Goodyear, Arizona: 2006  
 Placentia, California: 2006  
 Proposed Town Center, Houston, Texas: 2006  
 Santa Ana Town Center, Albuquerque, New Mexico: 2006  
 City of Whittier, California: 2006  
 Lincoln, Nebraska: 2006  
 Burr Ridge Town Center, Burr Ridge, Illinois: 2005  
 East Fraserlands Town Center, Vancouver, BC: 2005  
 Vilano Beach, Florida: 2005  
 St. Armand's Circle Business District, Sarasota, Florida: 2005  
 York Township, Michigan: 2005  
 Niagara Falls, Canada: 2005  
 Metro Health Center, Grand Rapids, Michigan: 2005  
 Proposed Town Center, Rochester, New York: 2005  
 Daytona, Florida: 2005  
 University of Connecticut: 2004  
 D-C Ranch, Scottsdale, Arizona: 2004  
 Ashford, England, Expansion Master Plan: 2004  
 Biltmore Farms, Asheville, North Carolina: 2004  
 Jekyll Island, Georgia: 2003  
 King Street, Charleston, South Carolina: 2003  
 Ponce de Leon Avenue Retail Study, San Juan Puerto Rico: 2003  
 Town Center Study, City of University Place, Washington: 2002  
 Mart Dock Waterfront Retail Study, Muskegon, Michigan: 2002  
 Bolton Road Market Study, Atlanta, Georgia: 2002  
 Cooley Farms Position Paper, Gilbert, Arizona: 2002  
 Market Study, Alfreda, Georgia: 2002  
 Market Study, Lower East Side Convent Hill, Milwaukee, 2002  
 Market Study, Near West Side-Highland Park, Milwaukee, 2002  
 Rosemary Beach, Florida, Town Center Study: 2002  
 Frisco Square, Frisco, Texas: 2002  
 Glenview Naval Station Town Center, Glenview, Illinois: 2002  
 Downtown Waterfront Study, Jupiter, Florida: 2001  
 Corridor Study, 28<sup>th</sup> Street, Wyoming, Michigan: 2001  
 Town Center, Prairie Crossing, Illinois: 2001  
 Corridor Study, Harper Avenue, St. Clair Shores, Michigan: 2001  
 Redevelopment Plan, Greenbrier Mall, Atlanta, Georgia: 2001  
 Corridor Study, Van Dyke Highway, Warren, Michigan: 2001  
 Redevelopment Plan, Antioch Mall, Kansas City, Missouri: 2001  
 Town Center, General Motors Tech Center, Warren Michigan: 2001  
 Mexican Town, SW Detroit, Michigan: 2001  
 Coffee Creek Town Center, Chesterton, Indiana: 2001  
 Downtown Macon Revitalization, Macon, Georgia: 2000  
 Downtown Study, Portland, Oregon: 2000  
 Hope VI Redevelopment Project, Norfolk, Virginia: 2000  
 Downtown Study, Bloomington, Indiana: 2000  
 Microsoft Regional Offices, Seattle, Washington: 2000  
 San Elijo Town Center, Carlsbad, California: 2000  
 Coffee Creek Town Center, Chesterton, Indiana: 2000  
 DuPont Town Center, DuPont, Washington: 2000  
 Retail Planning Study, Cambridge, Massachusetts  
 Harmony Town Center, Orlando, Florida: 2000  
 Retail Planning Study, Chicago, Illinois: 1999  
 Retail Planning Study, Melbourne, Australia: 1999  
 Ellard Village Retail Planning Study, Roswell, Georgia: 1999  
 Retail Planning Study, Sydney, Australia: 1999  
 Inner Harbor East Retail Market Research, Baltimore, Maryland: 1999  
 Bon Marche' Mall Retail Planning Study, Baton Rouge, Louisiana: 1999  
 Stop & Shop Supermarket Company Retail Analysis, Bloomfield, Connecticut: 1999  
 Eastgate Mall Retail Planning Study, Chattanooga, Tennessee: 1999



*University Place Town Center, Washington*



*Rosemary Beach, Florida*



*Cuyahoga Falls, Ohio*

North Broadway Project Retail Market Research, Tacoma, Washington: 1999  
 Inner Harbor East Retail Market Research, Baltimore, Maryland: 1999  
 Stop & Shop Supermarket Company Retail Analysis, Bloomfield, Connecticut: 1999  
 Retail Planning Study, Cambridge, Massachusetts: 1999  
 Chattanooga, Tennessee, Eastgate Mall Retail Planning Study: 1999  
 Central Square, Cambridge, Massachusetts: 1999  
 Redevelopment Project, Bon Marche' Mall, Baton Rouge, Louisiana: 1999  
 Redevelopment Project, Northland Mall, Southfield, Michigan: 1999  
 Bon Marche' Mall Retail Planning Study, Baton Rouge, Louisiana: 1998  
 Town Center Analysis, Kentlands, Gaithersburg, Maryland: 1998  
 Marina Commercial Study, WCI Communities, Bonita Springs, Florida: 1998  
 Retail Market Analysis and Site Planning, Trenton, New Jersey: 1998  
 Retail Planning Study, Arlington, Texas: 1998  
 Retail Market Study, Asheville, North Carolina: 1998  
 Retail Planning Study, Austin, Texas: 1998  
 Downtown Retail Market Analysis & Retail Master Plan (DPZ lead), Baton Rouge, Louisiana: 1998  
 Retail Planning Study, Boulder, Virginia: 1998  
 Retail Planning Study, Charlottesville, Virginia: 1998  
 Miracle Mile Retail Study (The Taubman Company lead), Coral Gables, Florida: 1998  
 Retail Market Study, Covington, Louisiana: 1998  
 Retail Planning Study, Davidson, North Carolina: 1998  
 Retail Planning Study, Dexter, Michigan: 1998  
 Market Analysis & Retail Planning Study, Galveston, Texas: 1998  
 Market Analysis, Guelph, Ontario: 1998  
 Visual Merchandising Presentation, Jeffersonville, Indiana: 1998  
 State Street Market Analysis (JJR lead), Madison, Wisconsin: 1998  
 Grand Avenue Retail Market & Financial Analysis, Milwaukee, Wisconsin: 1998  
 Retail Market Analysis, Oconomowoc, Wisconsin: 1998  
 High Street strategy and overall tenant mix, Ohio State University: 1998  
 Retail Planning Study, Orlando, Florida: 1998  
 Market Analysis, City of Plano, Texas: 1998  
 Market Analysis, Quincy, Michigan: 1998  
 Retail Planning Study, Smyrna, Georgia: 1998  
 Central Business District & Neighborhoods Retail Market Analysis, St. Paul, Minnesota: 1998  
 Market Analysis & Retail Planning Analysis (Dover Kohl Associates lead), Winter Springs, Florida: 1998  
 Retail Market Analysis, Belmont, North Carolina: 1997  
 Market Analysis & Retail Planning Analysis, DuPont, Washington: 1996-1997  
 Market Analysis & Retail Planning Analysis, Eagle, Colorado: 1996-1997  
 Retail Market Analysis, Hillsdale, Michigan: 1997  
 Retail Planning Study, Long Beach, California: 1997  
 Retail Market Analysis, Merritt Island, Florida: 1997  
 Visual Merchandising Presentation, Norfolk, Virginia: 1997  
 Retail Study (McKenna & Associates lead), Richmond, Michigan: 1997  
 Downtown Retail Master Plan (DPZ lead), Bennettsville, South Carolina: 1996  
 Rodeo Drive-Golden Triangle Retail Planning Study, Beverly Hills, California: 1996  
 Downtown Market Feasibility Study, Northville, Michigan: 1996  
 Third Street Downtown Study, Naples Florida: 1996  
 Downtown Study, Northville, Michigan: 1996  
 Market Void Analysis, 42<sup>nd</sup> and Walnut Streets, University of Pennsylvania, Philadelphia: 1995-1996  
 Retail Planning Study (DPZ lead), Gaithersburg, Maryland: 1995  
 Homewood Building Retail Market Analysis, John Hopkins University, Baltimore, Maryland: 1995  
 5<sup>th</sup> Avenue Retail Master Plan (DPZ lead), Naples, Florida: 1995  
 Clematis Street Study, West Palm Beach: 1995  
 Downtown Retail Master Plan, West Palm Beach, Florida: 1993  
 Retail Study (DPZ lead), Providence, Rhode Island: 1992  
 Fairlane Town Center Mall Entry Renovation, Dearborn, Michigan: 1991

#### Urban Planning Consulting



Palm Desert, California

Palm Desert, El Paseo Street Master Plan, 2018  
 Warren Town Center, Michigan: 2017  
 Fallen Timbers, Marietta, Ohio: 2017  
 Haslett, Michigan Town Center Plan: 2017  
 Okemos, Michigan Village Master Plan: 2017  
 Wixom, Michigan Town Center Concept Plan: 2016  
 Troy, Michigan Town Center Master Plan: 2016  
 Detroit Zoo Parking Plan: 2016  
 Gateway Innovation District, Lansing, Michigan: 2016  
 Frankenmuth, Michigan Master Plan for Private Developer: 2016  
 Crooks Road Site, Troy, Michigan: 2016  
 Shelby Town Center, Shelby Township, Michigan: 2016  
 Troy, Michigan: 2015



Plano, Texas



Three Rivers, Michigan



Birmingham, Michigan

Three Rivers, Michigan: 2015  
 Pontiac, Michigan: 2015  
 Walloon, Michigan: 2015  
 Dearborn, Michigan Sustainable Parking Lots: 2015  
 Chandler Crossings, Lansing, Michigan: 2014  
 East Bay Plaza, Traverse City, Michigan: 2014  
 Eddington Square, Rochester Hills, Michigan: 2014  
 Brush Park Neighborhood Plan, Detroit, Michigan: 2014  
 Bloomfield Hills, Michigan: 2014  
 Palmer Park Master Plan, Detroit, Michigan: 2014  
 The Village at Grand Traverse Commons: 2014  
 Eighth Street Study, Traverse City, Michigan: 2013  
 Grand Rapids, Michigan: 2012  
 Chesterfield, Missouri: 2012  
 Downtown Commercial Master Plan: City of Daytona Beach, Florida: 2011  
 Downtown Commercial Master Plan: Santa Cruz, California: 2011  
 Commercial Study: City of Montgomery, Alabama: 2011  
 Interlochen Village, Green Lake Township, Michigan: 2011  
 Narcoossee Road Corridor, Osceola County, Florida: 2011  
 East Highway 192 Corridor, Osceola County, Florida: 2011  
 SR-7 Corridor, Palm Beach County, Florida: 2010  
 Houston Central Business District, Houston, Texas: 2009-2010  
 Master Plan: City of Wasilla, Alaska: 2009  
 Master Plan: City of Damariscotta, Maine: 2009  
 Master Plan: Beverly Hills, Michigan: 2009  
 Kirkland Town Center Master Plan (LMN Architects lead consultant): 2009  
 Palm Beach Gardens Master Plan (Treasure Coast Regional Planning Commission lead): 2009  
 Old Town Master Plan, Alexandria, Virginia: 2009  
 Hutt, New Zealand CBD: 2008  
 Consulting: City of Carmel Central Business District, Carmel, Indiana: 2008  
 Fort Pierce, Florida, TCRPC: 2008  
 Fort Worth, Florida, TCRPC: 2008  
 Jensen Beach, Florida, TCRPC: 2008  
 Margate, Florida, TCRPC: 2008  
 Master Plan: City of Palm Beach, Florida, TCRPC: 2008  
 ULI Council: Speedway, Indiana, ULI Advisory Panel: 2008  
 City of Plano, Texas: 2008  
 Master Plan: City of Alexandria, Virginia: 2008  
 City of Downey, California: 2008  
 Sprague/Appleway Corridor, City of Spokane Valley, Washington: 2007-2008  
 Albuquerque, New Mexico, South Yale Corridor: 2007  
 Rockville Pike Corridor, Maryland: 2007  
 City of Charleston, South Carolina: 2007  
 Jensen Beach, Florida: 2007  
 St. Louis Park, Minnesota: 2007  
 Temecula, California, Master Plan: 2007  
 Louisiana Recovery Authority: 2006  
 West Palm Beach, Florida: 2006  
 Downtown Placentia, California, Master Plan: 2006\*  
 Downtown Master Plan, Santa Ana, California: 2006\*  
 Downtown Master Plan, Whittier California: 2006\*  
 Niagara Falls, Canada: 2005-2006\*  
 Overland Park, Kansas, Master Plan Review: 2006  
 Downtown Study, Crystal River, Florida: 2005  
 State of Florida, Community Development: 2005  
 Downtown Plan, Sarasota Florida: 2004-2005  
 Town Expansion Plan, Ashford, England: 2004  
 Zoning Study, Austin, Texas: 2004  
 East Lansing-Michigan State University: 2004  
 King Street & Market Square Retail Plan, Charleston, South Carolina: 2003  
 Westgate Master Plan, Toledo, Ohio: 2003  
 Downtown Plan, Wilkes-Barre, Pennsylvania: 2003  
 Third Ward Master Plan, St. Louis: 2002  
 Northwest Expansion for 40,000 population, Dublin, Ireland: 2001  
 Harper Avenue Corridor, St. Clair Shores, Michigan: 2001  
 Downtown Study, Bloomington, Indiana: 2000  
 Mid-Block Task Force, Portland, Oregon: 2000  
 Downtown Study, Macon, Georgia: 2000  
 Downtown Study, Kirkland, Washington: 2000  
 Downtown Master Plan, Lake Orion, Michigan: 2000  
 Master Plan, Macon, Georgia: 2000  
 Master Planning Study, Normal, Illinois: 2000

Master Plan, Grosse Pointe Farms, Michigan: 1999  
 Retail Market Analysis and Site Planning, Trenton, New Jersey: 1999  
 CBD Master Plan (DPZ lead), Baton Rouge, Louisiana: 1998  
 Master Plan (DPZ lead), Hickory, North Carolina: 1998  
 CBD Study, Lower Hutt, New Zealand: 1997-1998  
 CBD Master Plan and Charrette, Macomb Township, Michigan: 1998  
 CBD Study, St. Paul, Minnesota: 1998  
 CBD Study, Wildwood, Missouri: 1998  
 Hartford Road Corridor Study (DPZ lead), Baltimore, Maryland: 1997  
 Downtown Master Plan, Bennettsville, South Carolina: 1997  
 Howell CBD Master Plan, Howell, Michigan: 1997  
 Third Ward Public Market Plan, Milwaukee, Wisconsin: 1997  
 Master Plan Evaluation, Naples, Florida: 1997  
 CBD Master Plan, Northville, Michigan: 1997  
 Sunset Transit Station Planning Study, Washington County, Oregon: 1997  
 City Master Plan Study, Birmingham, Michigan: 1996  
 City Master Planning Study, Cedar Mill, Oregon: 1996  
 Retail Planning Study (Lennertz Coyle lead), Forest Grove, Oregon: 1996  
 Cedar Mill Retail Market Study (Lennertz Coyle lead), Portland, Oregon: 1996  
 Urban Shopping Center Study, Windsor, Ontario: 1996  
 Lincoln Road Infill Redevelopment Study (DPZ lead), Miami Beach, Florida: 1995  
 South Beach Planning Charrette, Miami Beach, Florida: 1995  
 Fifth Avenue Master Plan, City of Naples, Florida: 1995  
 CBC Master Plan, Oxnard, California: 1995  
 Master Plan, City of West Palm Beach, Florida: 1995  
 CBC Master Plan, Ventura, California: 1995  
 Master Planning Study, (McKenna Associates lead), Bay City, Michigan: 1993



Detroit Zoo

#### Neo-Traditional Town Planning

Pineland Prairie Town Center Master Plan (Dover Kohl lead planner): 2018  
 Windward Pointe Town Center, Muskegon, Michigan (DPZ lead planner): 2018  
 Troy, Michigan Town Center Master Plan: 2017  
 Warren, Michigan Town Center Master Plan: 2017  
 Southfield, Michigan Town Center Master Plan: 2016  
 Frankenmuth, Michigan Town Center Plan: 2016  
 Walloon Village, Michigan Master Plan: 2012  
 Mixson Town Center, North Charleston, South Carolina: 2008  
 Town Center Study, Saugatuck, Michigan: 2008  
 City of Downey, California: 2008  
 Lake Hutto, Florida: 2008  
 Lake Toho, Florida: 2008  
 Clarksburg Town Center, Clarksburg, Maryland: 2008  
 Lacey Gateway, Lacey, Washington: 2007  
 Missoula Town Center, Missoula, Montana: 2007  
 Noah's Ark Town Center, St. Charles, Missouri: 2007  
 Tuxedo Town Center, Tuxedo, New York: 2007  
 Lacey Gateway, Lacey, Washington: 2007  
 Water's Edge Town Center, Athens, Georgia: 2006  
 North Carolina Research Campus, Kannapolis, North Carolina: 2006  
 Rouzan Town Center, Baton Rouge, Louisiana: 2006  
 Houston, Texas, Proposed Town Center: 2006\*  
 Santa Ana Town Center, Albuquerque, New Mexico: 2006\*  
 Erie Canal Town Center, Rochester, New York: 2005-2006  
 San Elijo Hills Town Center, San Marcos, California: 2005\*  
 East Fraserlands Town Center, Vancouver, BC: 2005  
 Leeland Station, Virginia: 2005  
 City of Carmel Town Center, Carmel, Indiana: 2005  
 Evening Rose Town Center, Tallahassee, Florida: 2005  
 Domino's Farms General Master Plan: 2004  
 Treasure Coast Regional Plan, Florida: 2004\*  
 Lorna Stone, Rochester Hills, Michigan: 2003  
 University Place Town Center, University Place, Washington State: 2003  
 Domino's Farms Town Center, Ann Arbor, Michigan: 2002  
 The Glen Town Center, Glenview, Illinois: 2002  
 Village of Rochester Hills Town Center, Rochester Hills, Michigan: 2002  
 Rosemary Beach, Florida, Town Center Study: 2002  
 Baldwin Town Center, Grand Blanc, Michigan: 2002  
 BTS Town Center, Lansing, Michigan: 2001  
 The Hamlet, Canton, Michigan: 2001  
 Acme Town Center, Acme Township, Michigan: 2001  
 Nixon Road Town Center, Ann Arbor, Michigan: 2001



Troy, Michigan



Southfield, Michigan



Walloon, Michigan



*Interlochen Village,  
Michigan*



*Westwood Common,  
Beverly Hills, Michigan*



*University of  
Pennsylvania*

Prairie Crossings Town Center, Chicago, Illinois: 2001  
 Asher Village, Linden, Michigan: 2001  
 Regional Town Center, Draper, Utah: 2001  
 Coffee Creek Town Center, Chesterton, Indiana: 2001  
 Multiple Town Center Master Planning, Draper, Utah: 2000  
 Coconut Point Town Center/ The Simon Company, Bonita Springs, Florida: 2000  
 Glenview Town Center, Glenview, Illinois: 2000  
 Eton Street Station Master Plan, Birmingham, Michigan: 2000  
 Shelby Town Center, Shelby Township, Michigan: 2000  
 Analysis and Zoning Review, Bay City, Michigan: 1999  
 Master Landscape Plan, Cherry Hill Village, Michigan: 1999  
 San Elijo Village Center Master Plan, San Diego, California: 1999  
 Mt. Laurel Village Center Master Plan (DPZ lead), Birmingham, Alabama: 1998  
 Northwest Landing Town Center (Calthorpe Associates lead) Dupont, Washington: 1998  
 Town Commons 60-acre TND, Howell, Michigan: 1998  
 Washington Village Master Plan, Washington Township, Michigan: 1998  
 Heritage Village Master Plan & Landscape Plan, Waterford Township, Michigan: 1997  
 Westwood Village Master Plan & Landscape Plan, Beverly Hills, Michigan: 1996-1997  
 Kentlands Town Center Expansion Master Plan (DPZ lead), Gaithersburg, Maryland: 1996  
 Aberdeen Town Center, Valparaiso, Indiana: 1995  
 Mayfield Park Village Master Plan, Mayfield Township, Michigan: 1995  
 The Vistas Master Plan & PUD approval, Novi, Michigan: 1993  
 Woodside Village 800-acre Master Plan, Grand Blanc, Michigan: 1991

**University Planning & Market Research**

Wayne State University, Detroit, Michigan 2017  
 University of Miami Medical District, Miami, Florida: 2008  
 Hendrix College, Conway, Arkansas: 2008  
 University of Connecticut Town Center Plan, Storrs, Connecticut: 2004  
 Michigan State University, East Lansing, Michigan: 2003  
 Downtown Study, Illinois State University, Normal, Illinois: 2000  
 High Street Master Plan, Ohio State University, Columbus, Ohio: 1998  
 State Street Master Plan, University of Wisconsin, Madison, Wisconsin: 1998  
 Adaptive Re-Use Study, John Hopkins University, Baltimore, Maryland: 1996  
 42<sup>nd</sup> Street Master Planning Study, University of Pennsylvania, Philadelphia, Pennsylvania: 1996  
 Walnut Street Master Planning Study, University of Pennsylvania, Philadelphia, Pennsylvania: 1996  
 Thayer Street Master Plan, Brown University, Providence, Rhode Island: 1994