

ASSESSOR'S MAP

SHOWING ZONING DISTRICTS

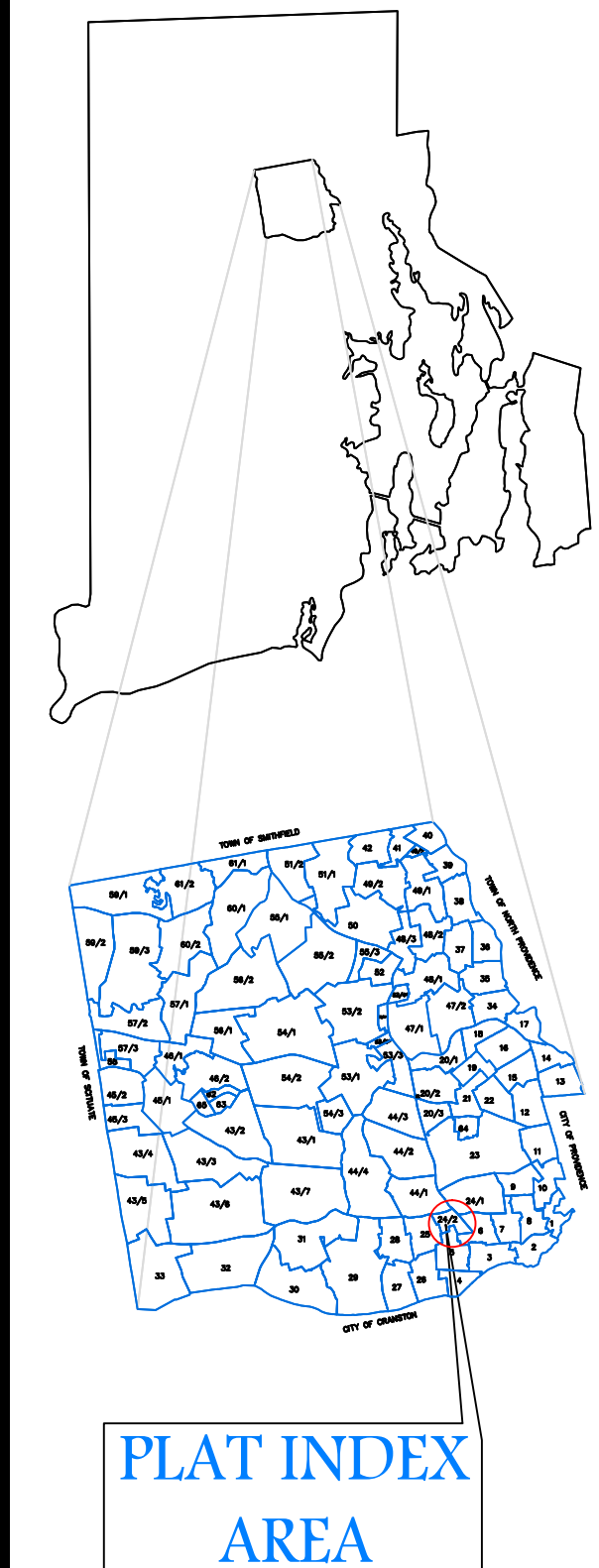
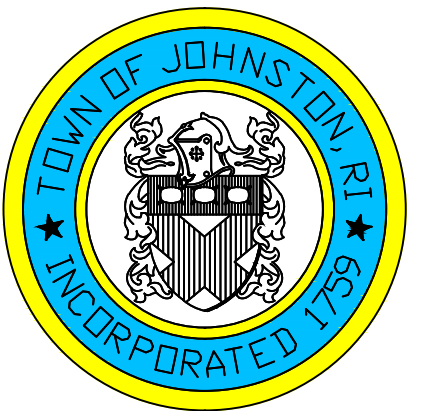
Assessor's Plat Number

24/2

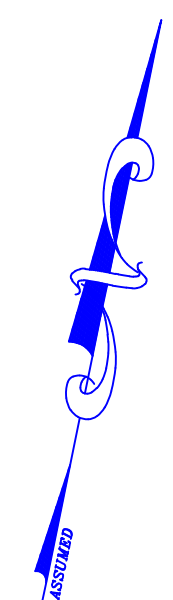
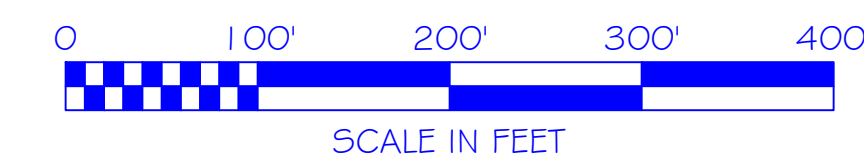
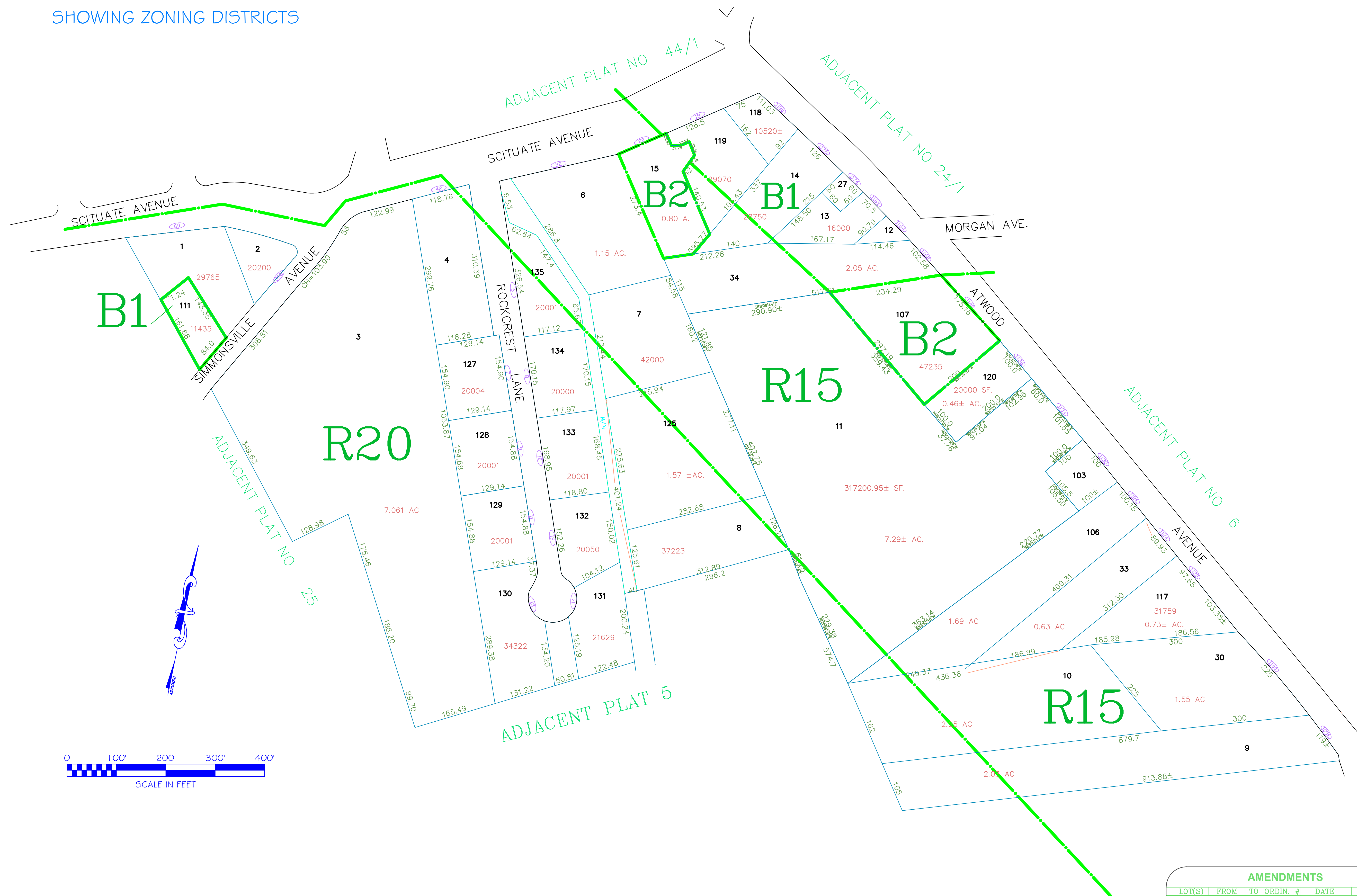
STATE OF RHODE ISLAND
TOWN OF JOHNSTON

PROVIDENCE COUNTY
INCORPORATED 1759

ASSESSOR'S OFFICE
1385 HARTFORD AVENUE
JOHNSTON, RHODE ISLAND
02919



PLAT INDEX AREA



AMENDMENTS					
LOT(S)	FROM	TO	ORDIN. #	DATE	NOTE
15	R15	B2	497	7/6/82	-
111	R20	B1	615	5/12/82	-
107	R15	B2	782	6/12/89	WITH STIP.

Scale: 1:120
Revised By: Benjamin Ng
Last updated: January 04, 2016
Date printed: January 04, 2016

For copies of plat maps, please go to the DPW at 100 Irons Avenue Johnston Rhode Island. Thank you.

NOTE: This map was prepared for the use of the Town of Johnston for assessment and illustrative purposes only. It does not represent a survey of the premises. No liability is assumed as to the sufficiency or accuracy of the data delineated hereon.