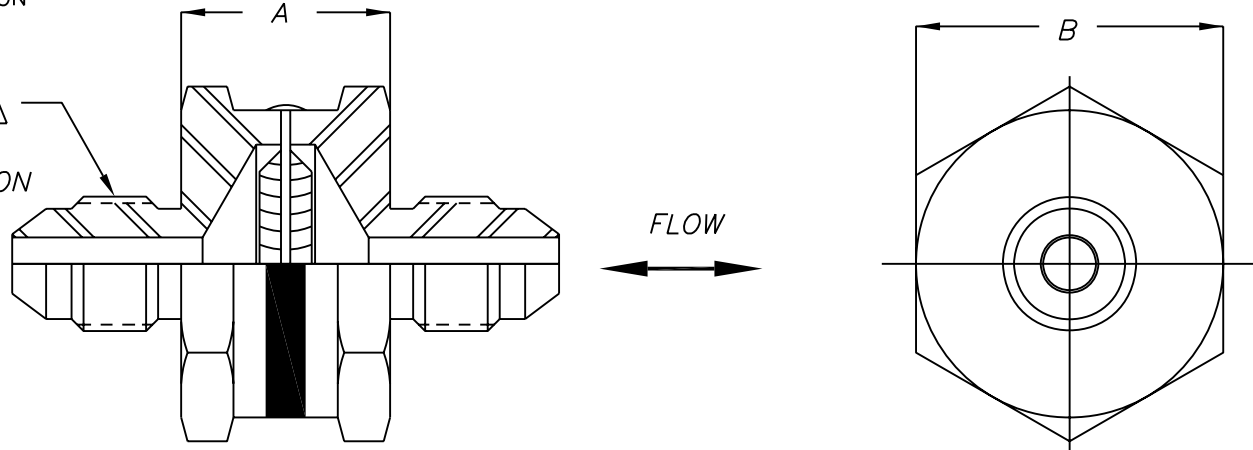


CLICK TO CONTACT US

THIS DOCUMENT CONTAINS INFORMATION PROPRIETARY TO GENESIS FILTRATION CORPORATION. ANY REPRODUCTION, DISCLOSURE, OR USE OF THIS DOCUMENT IN WHOLE OR IN PART IS EXPRESSLY PROHIBITED EXCEPT AS GENESIS FILTRATION CORPORATION MAY OTHERWISE AGREE TO IN WRITING.

REVISIONS			
LTR	DESCRIPTION	DATE	APPROVED

FITTING END
PER MS33656 - $\triangle 1$
SEE TABLE - $\triangle 1$
BOTH ENDS COMMON



9. TEMPERATURE RANGE:
-65°F TO 500°F.

8. PRESSURE DATA (BY DESIGN):
OPERATING: 6000 PSIG
PROOF: 9000 PSIG
BURST: 13,500 PSIG

7. ELEMENT COLLAPSE PRESSURE: 50 PSID MIN

6. MATERIALS: AISI TYPE 300 SER. CRES.

5. EFFECTIVE FILTER AREA: SEE TABLE "C".

4. CONSTRUCTION: TIG WELDED

3. FILTER MEDIA: STAINLESS STEEL WOVEN WIRE MESH.

$\triangle 2$ SECOND DASH NUMBER SPECIFIES
NOM. MICRON RATING.

$\triangle 1$ FIRST DASH NUMBER SPECIFIES FITTING END SIZES
COMMON FOR BOTH SIDES

$\triangle 1$ TUBE NO	TUBE O.D	"A"	"B" STK	"C" SQ IN
-4	1/4	.64-.72	1"	3.00
-5	5/16	.64-.72	1"	3.00
-6	3/8	.64-.72	1"	3.00
-8	1/2	.64-.72	1"	3.00

$\triangle 2$ NOM MIC RATING
- 2
- 5
- 10
- 20
- 40
- 70
- 105

UNLESS OTHERWISE SPECIFIED		DO NOT SCALE THIS DWG. INTERPRET DWG PER IAW DOD-STD-1000 DIMS & TOLS. PER ANSI Y14.5		DFT BY:		<i>Genesis Filtration Inc.</i> 9757 7th STREET, UNIT 804 Rancho Cucamonga, CA 91730						
DIMENSIONS IN INCHES REMOVE ALL BURRS		SURFACE ROUGHNESS PER ANSI B46.1 100 $\sqrt{\text{J}}$		DESIGN BY:						TITLE FILTER ASSY: MINILINE 37° FITTING ENDS		
MACHINE RADII .005/.015 R.		MATERIAL NOTED		APPVD BY:		CUSTOMER NAME		SIZE A		FSCM NO. 04AX3	DWG NO. 10000- $\triangle 1$ - $\triangle 2$	REV
BREAK ALL SHARP EDGES .002/.010 R.				CUSTOMER P/N		SCALE		FORME05 12/24/98		WEIGHT		SHEET OF