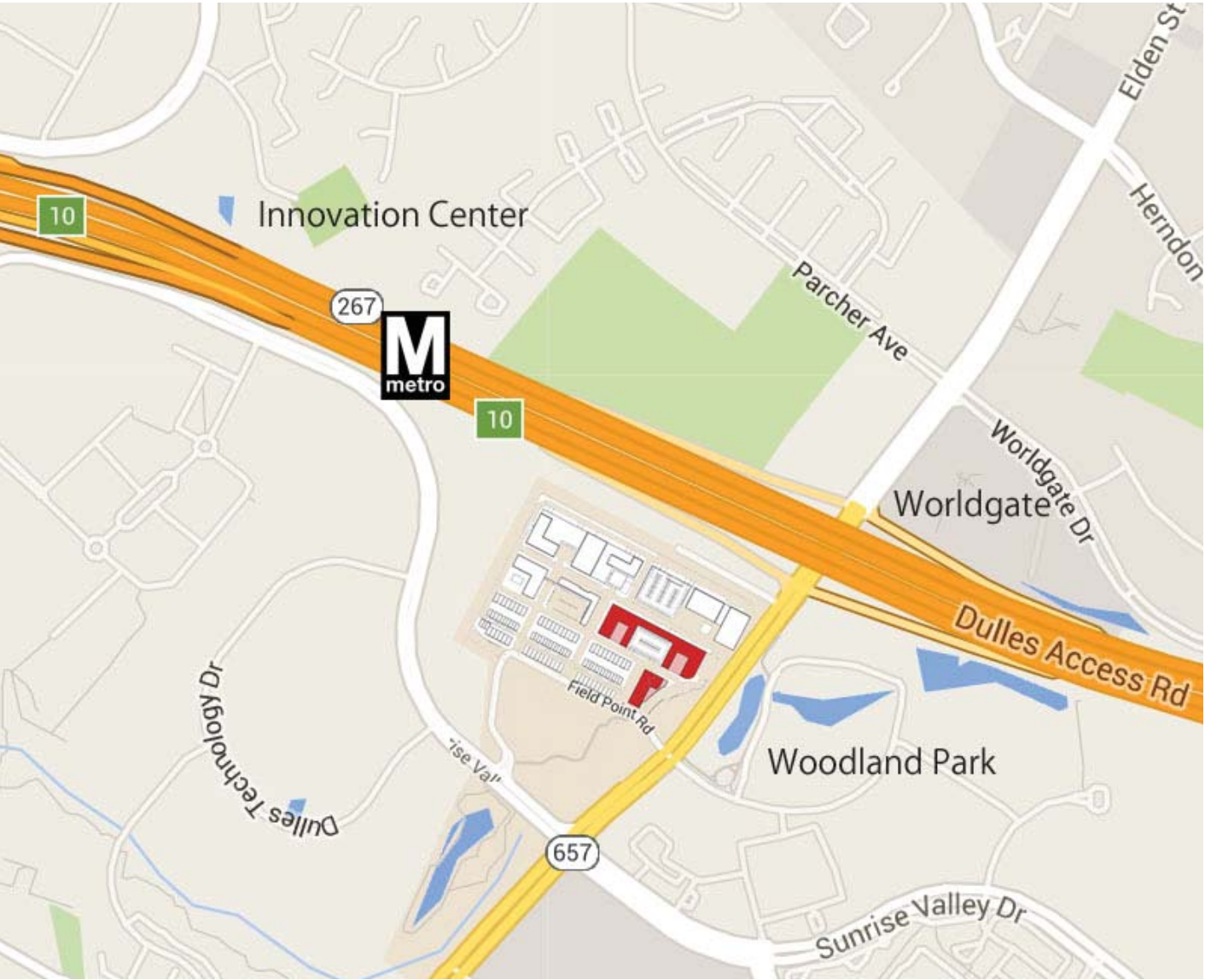


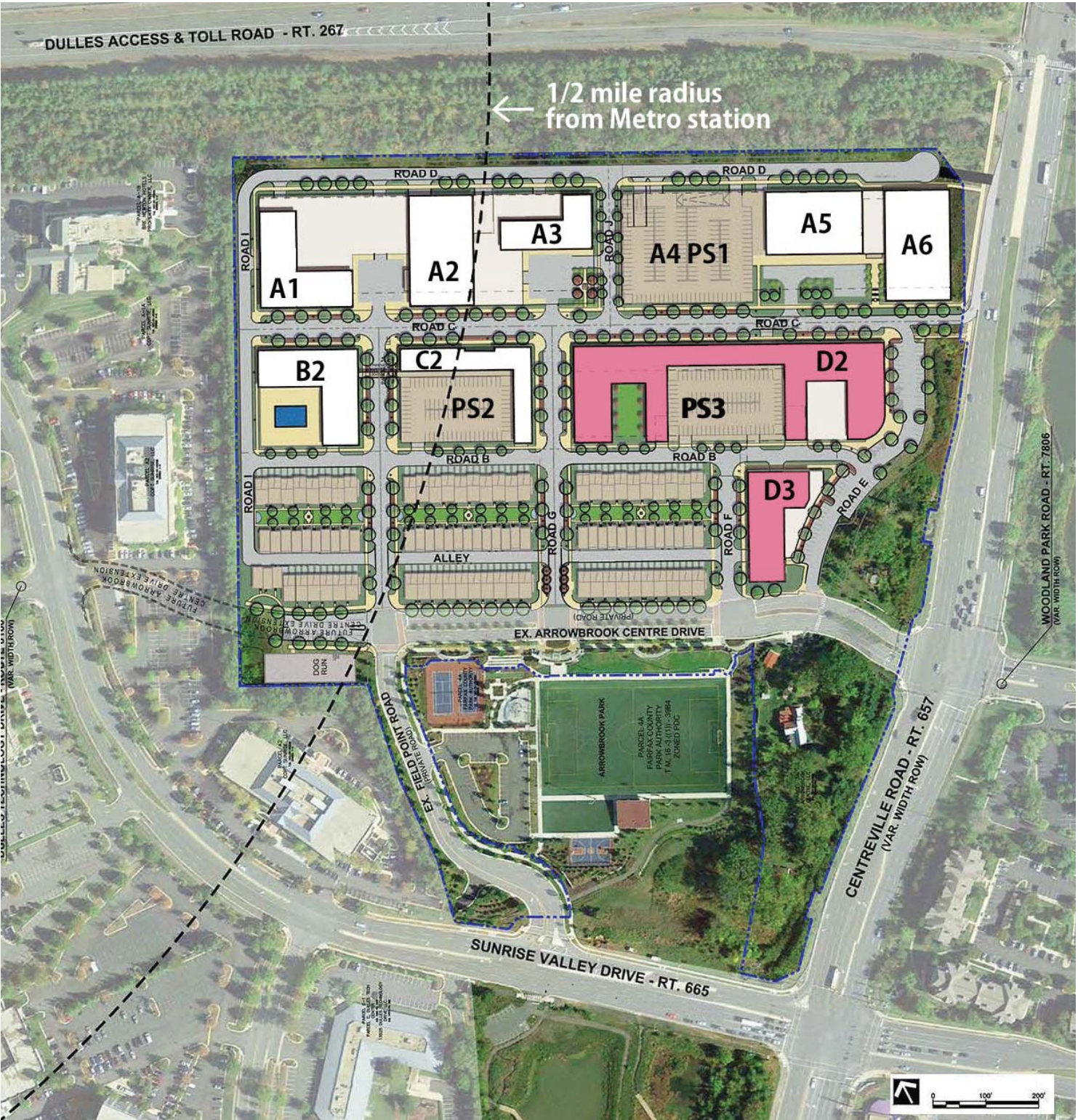


ARROWBROOK CENTRE D2 / D3 MULTI-FAMILY RESIDENTIAL

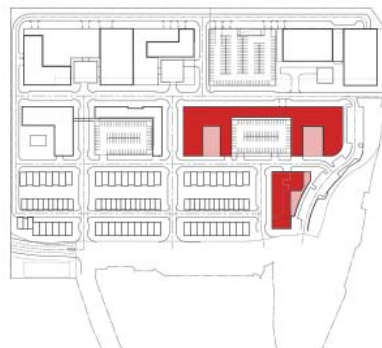
ARROWBROOK CENTRE D2 / D3 MULTI-FAMILY RESIDENTIAL



LOCATION PLAN



ARROWBROOK CENTRE D2 / D3 MULTI-FAMILY RESIDENTIAL



D2 RESIDENTIAL

GROUND FLOOR	27,391 S.F.
TYPICAL FLOOR @ 56,283 S.F. X 5 FLOORS	281,415 S.F.
7 TH. FLOOR	34,902 S.F.
TOTAL RESIDENTIAL S.F.	362,428 S.F.

TOTAL RESIDENTIAL UNITS	350 UNITS
--------------------------------	------------------

TOTAL RETAIL @ NW CORNER OF D2	4,000 S.F.
TOTAL RETAIL @ CENTERVILLE ROAD	38,300 S.F.

TOTAL RETAIL D2	42,300 S.F.
------------------------	--------------------

TOTAL PARKING REQ'D 350 X 1.6 SPACE/PER UNIT	560 SPACES
TOTAL PARKING REQ'D 42 X 4 SPACE/PER 1,000 S.F RETAIL	170 SPACES
TOTAL PARKING REQUIRED	730 SPACES

PS-3/D2	PA LEVEL RETAIL PARKING	154 SPACES
	P1-P7 LEVELS RESIDENTIAL PARKING	585 SPACES
8 LEVELS OF PARKING PROVIDED		739 SPACES

D3 RESIDENTIAL

GROUND FLOOR	5,000 S.F.
TYPICAL FLOOR @ 17,900S.F. X 4 FLOORS	71,600 S.F.
TOTAL RESIDENTIAL S.F.	76, 600 S.F.

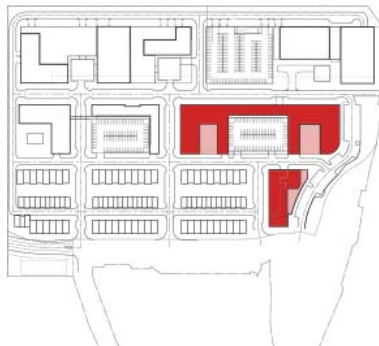
TOTAL RESIDENTIAL UNITS	48 UNITS
--------------------------------	-----------------

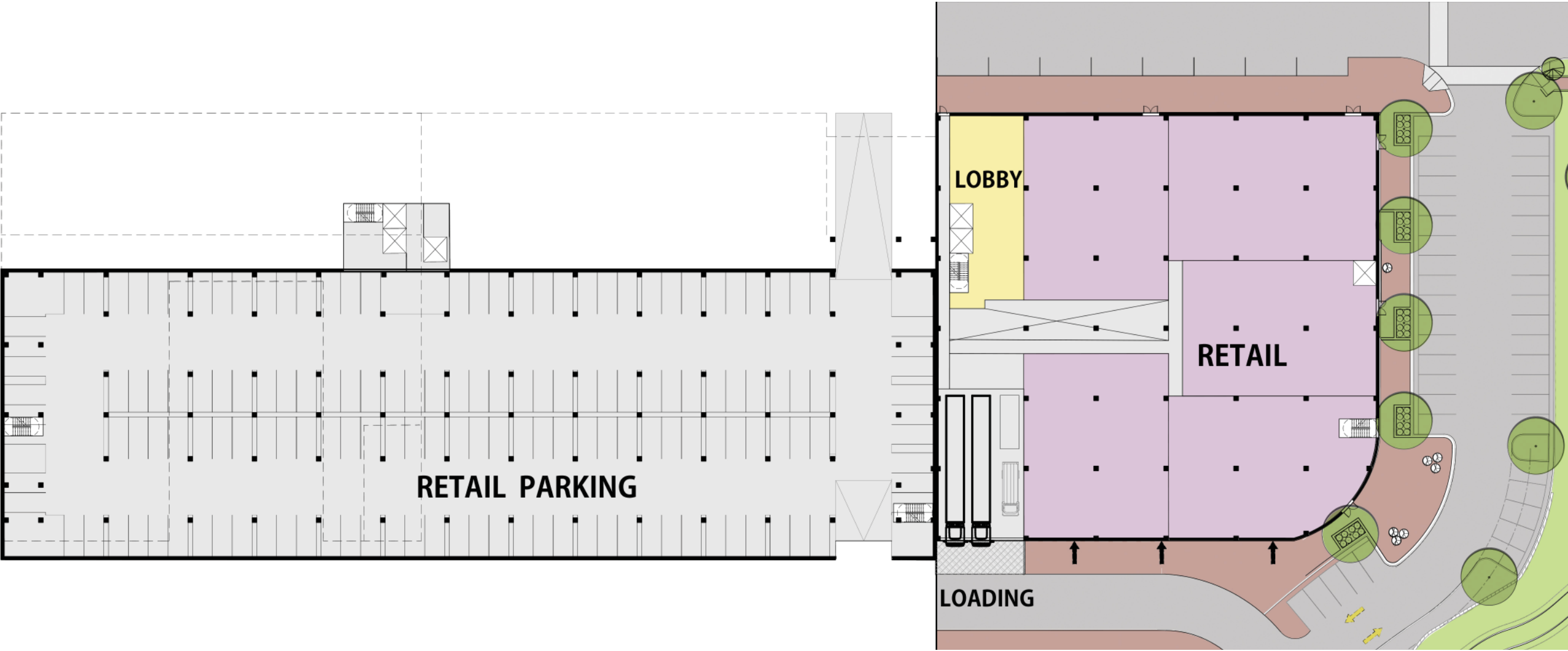
TOTAL RETAIL	13,800 S.F.
---------------------	--------------------

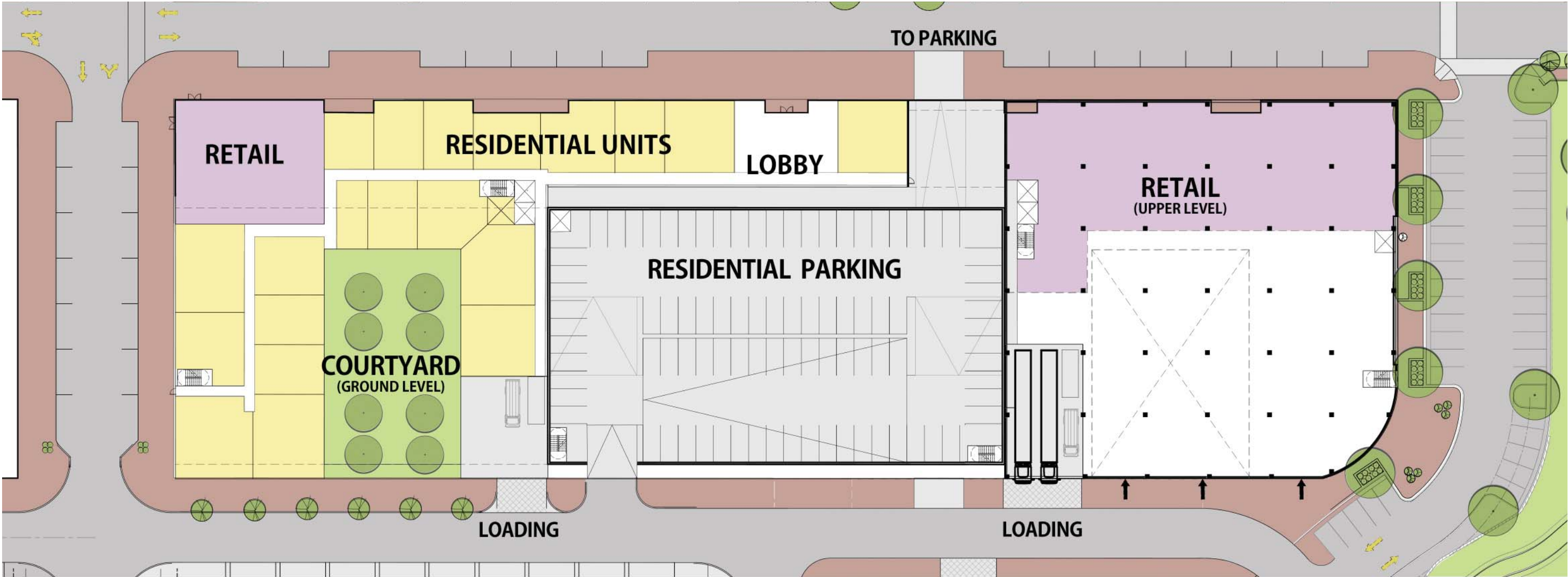
TOTAL PARKING REQ'D 48 X 2 SPACE/PER UNIT	96 SPACES
TOTAL PARKING REQ'D 13.8X 4 SPACE/PER 1,000 S.F. RETAIL	55 SPACES
TOTAL PARKING REQUIRED	151 SPACES

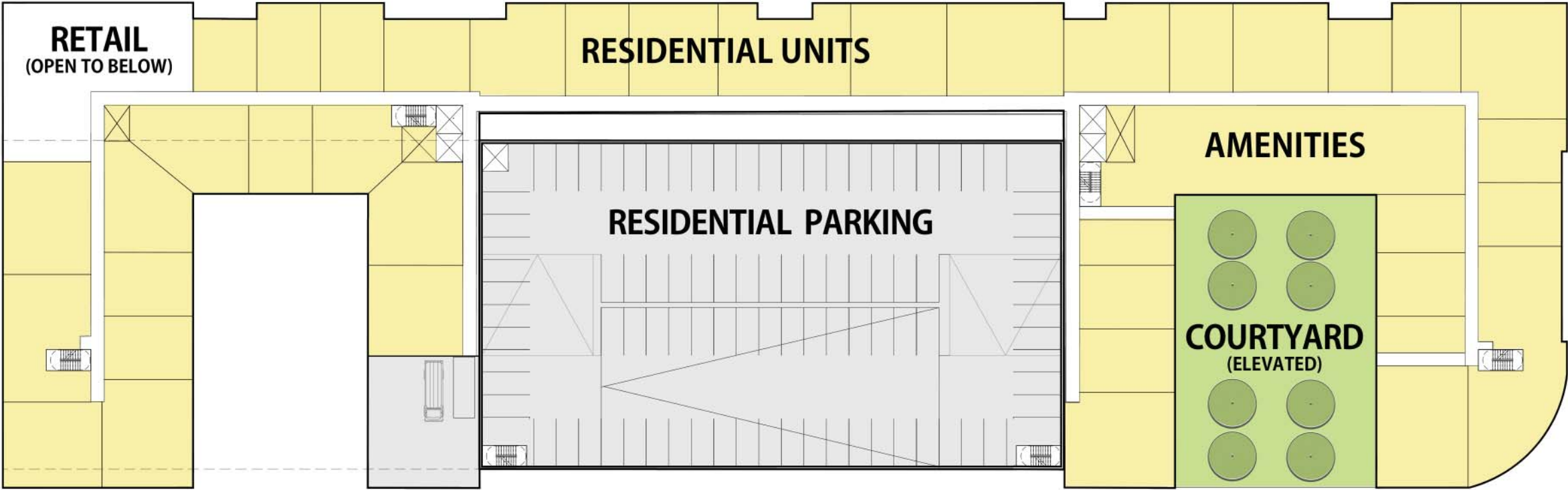
TOTAL PARKING PROVIDED	160 SPACES
-------------------------------	-------------------

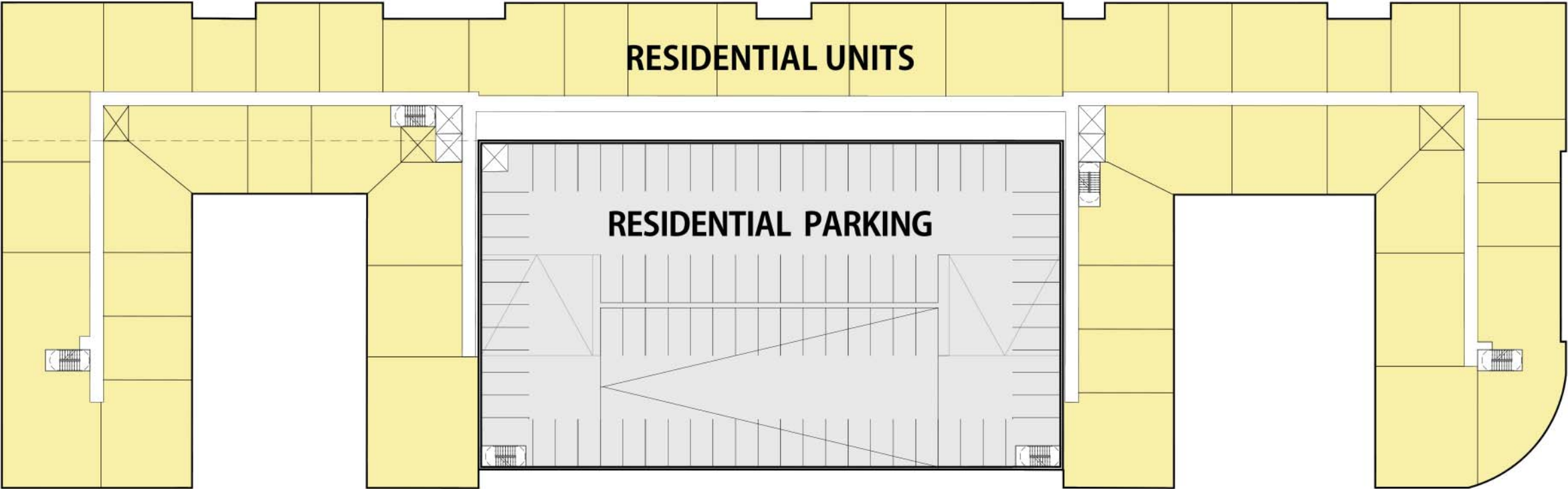
TABULATIONS AS PER JANUARY 2016

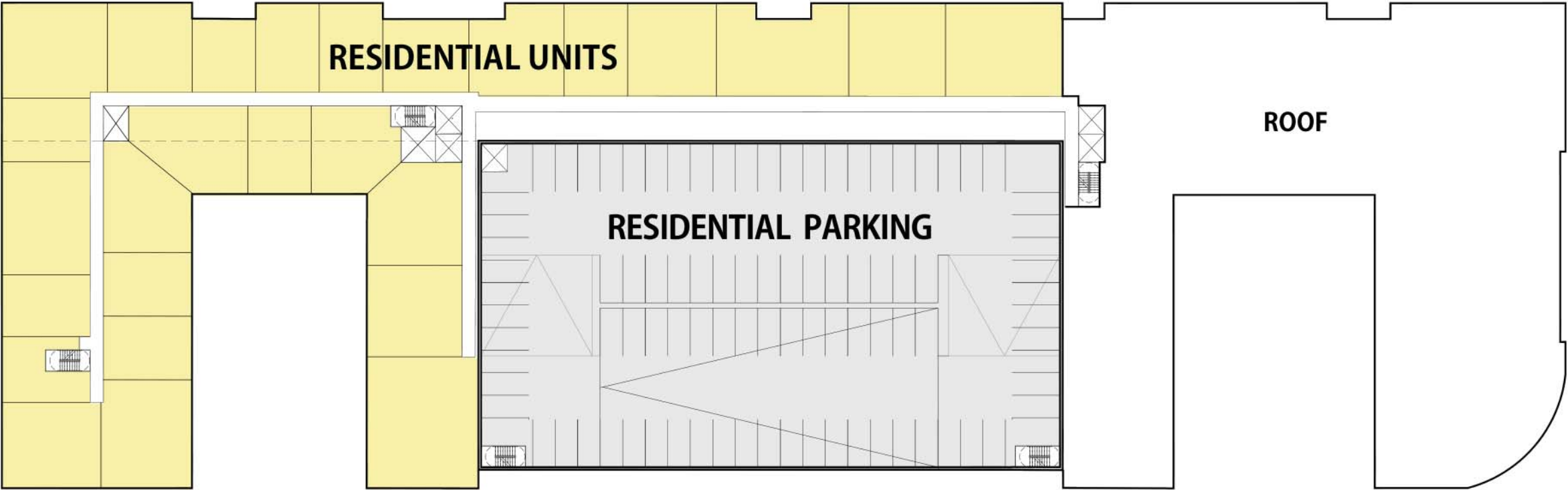


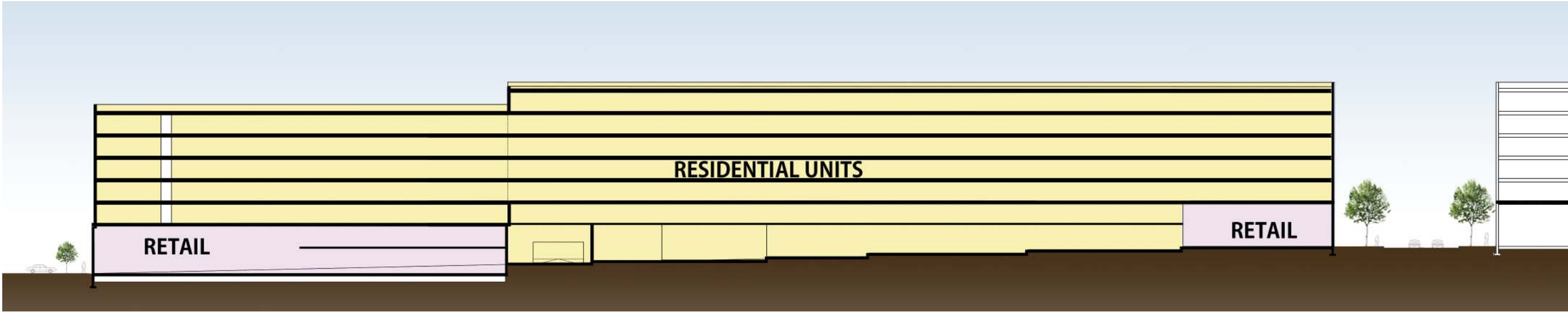




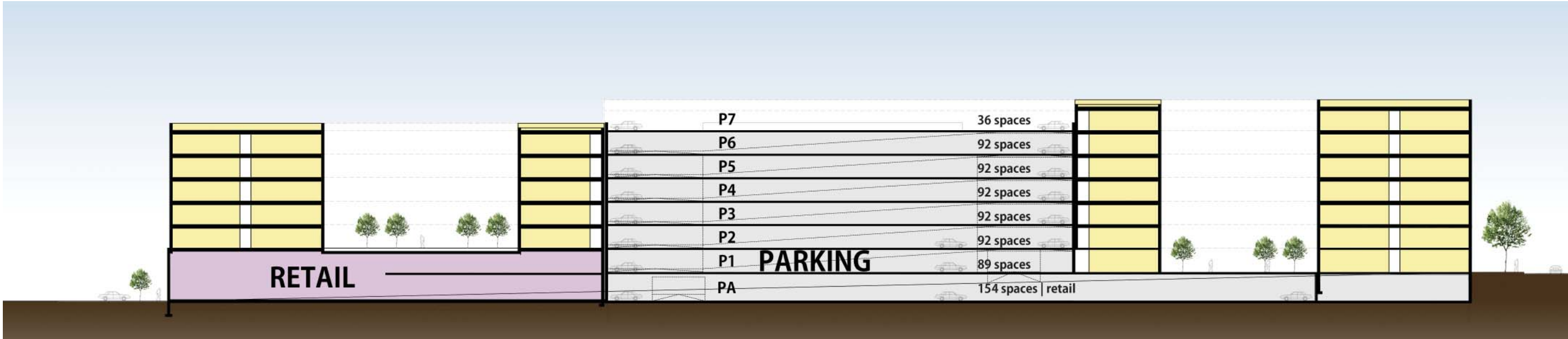








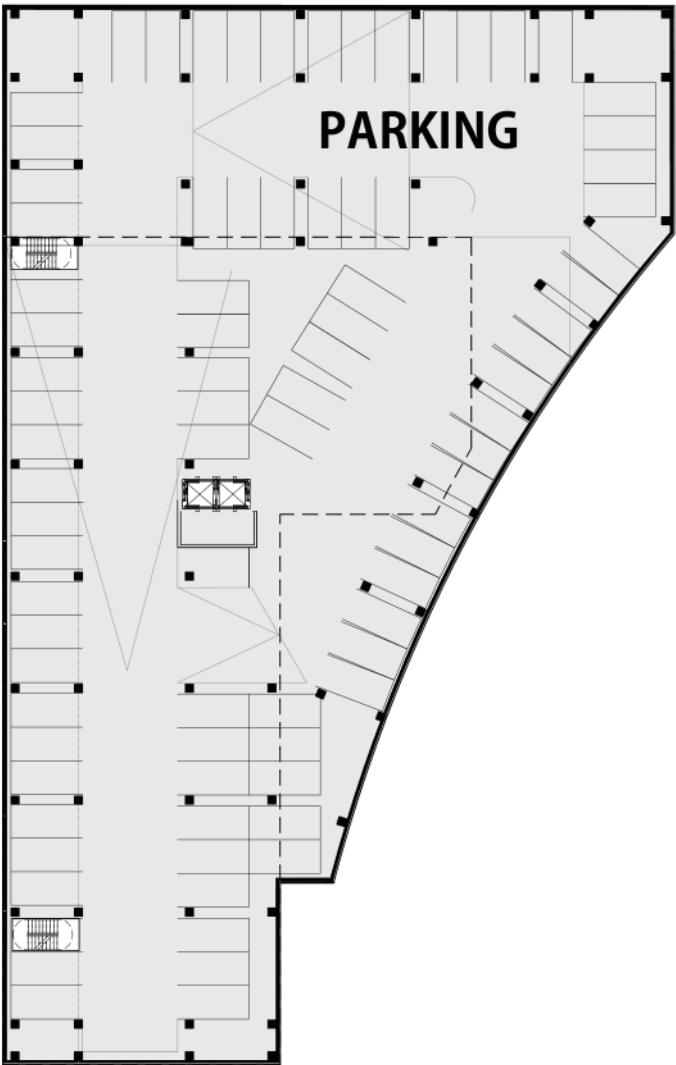
D2 SECTION AA



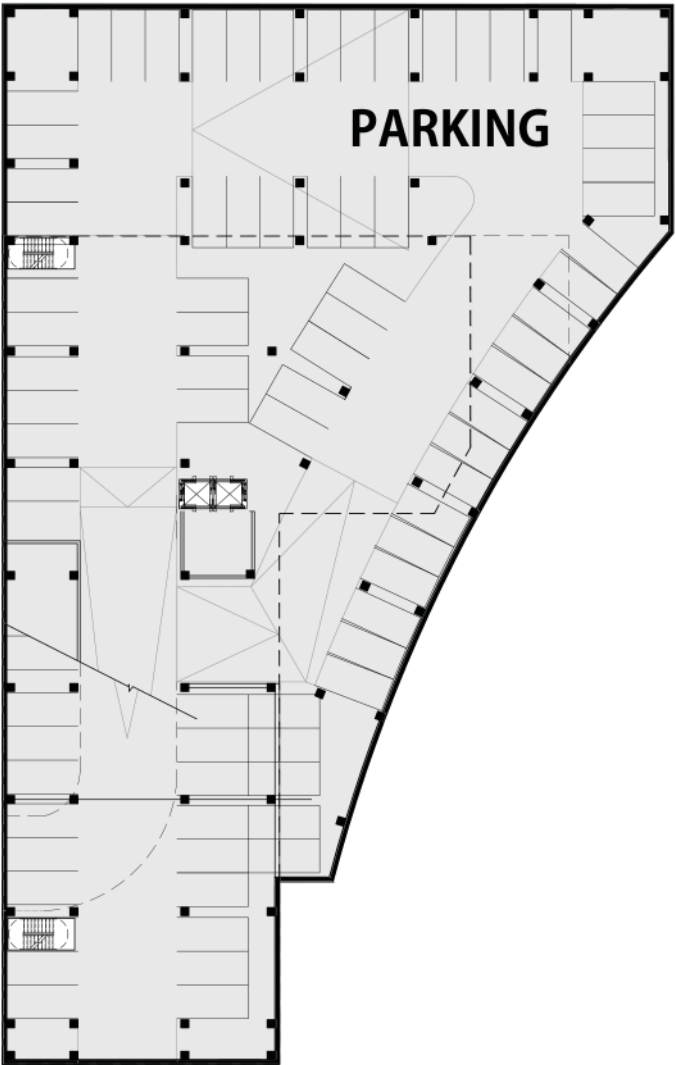
D2 SECTION BB



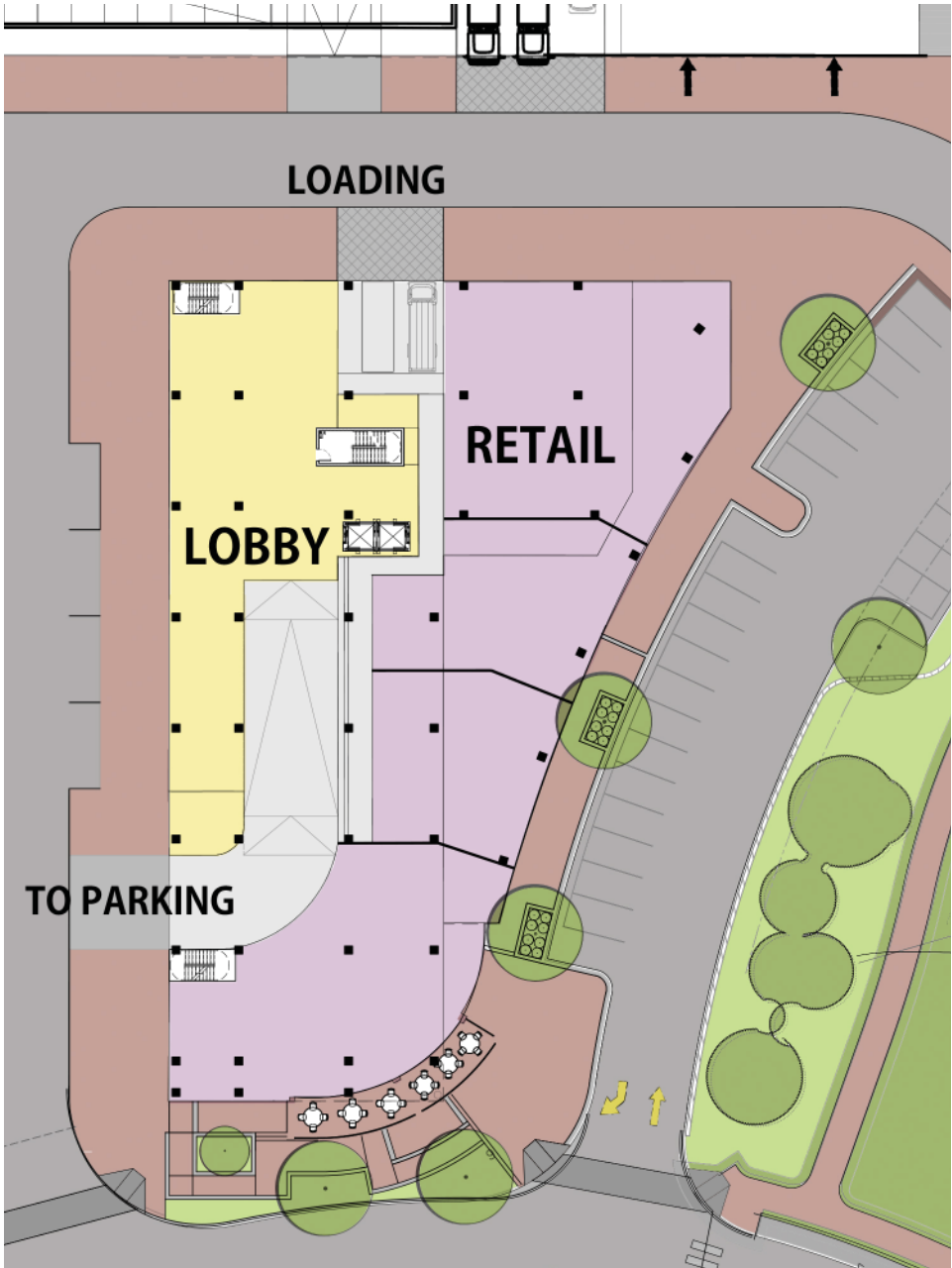
RESIDENTIAL
RETAIL
PARKING AND LOADING



D3 P2 PARKING



D3 P1 PARKING



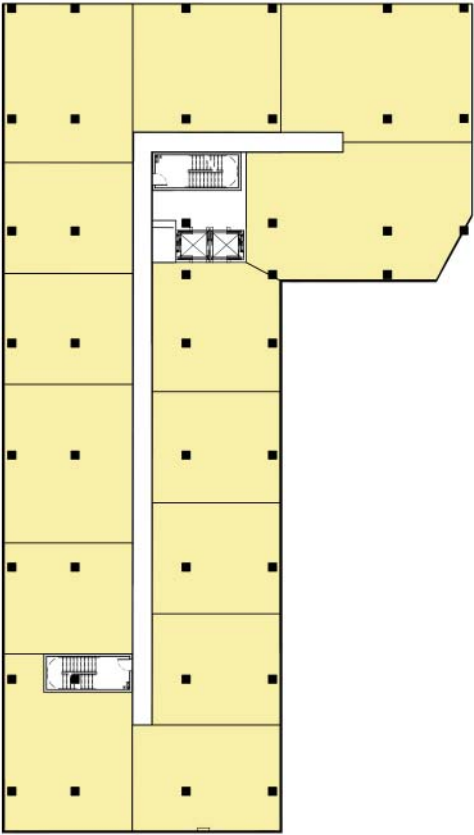
D3 GROUND FLOOR

RESIDENTIAL
RETAIL
PARKING AND LOADING

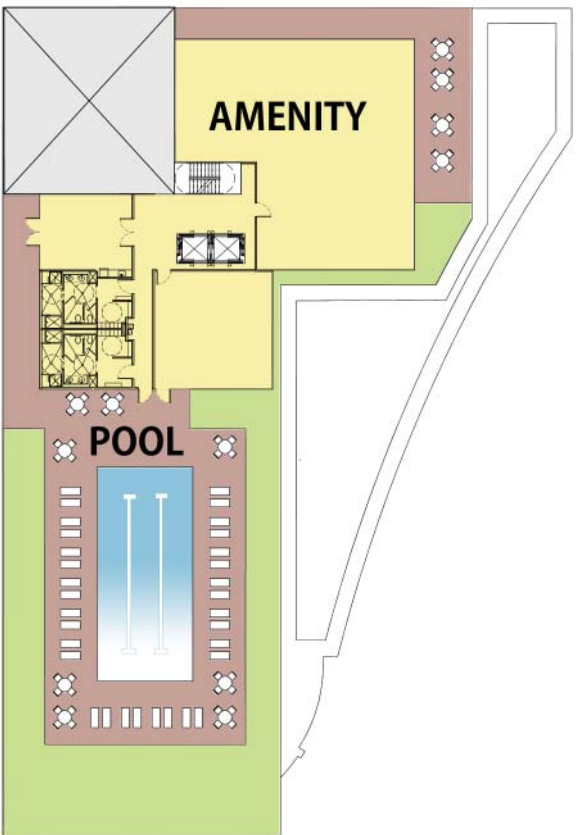




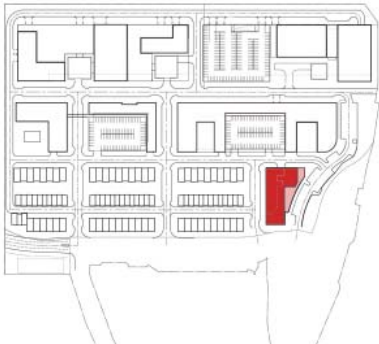
D3 SECOND FLOOR



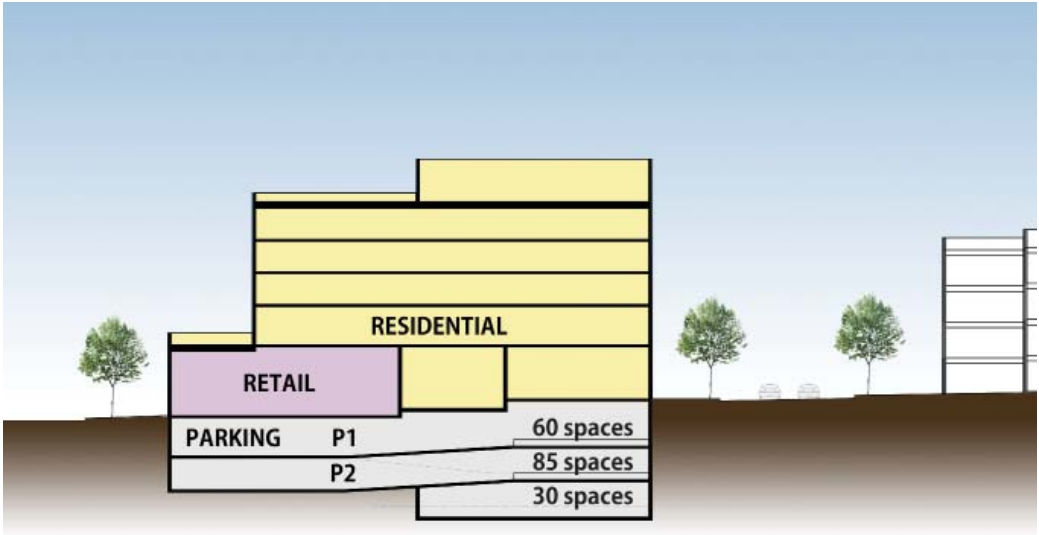
D3 TYPICAL FLOOR



D3 ROOF FLOOR



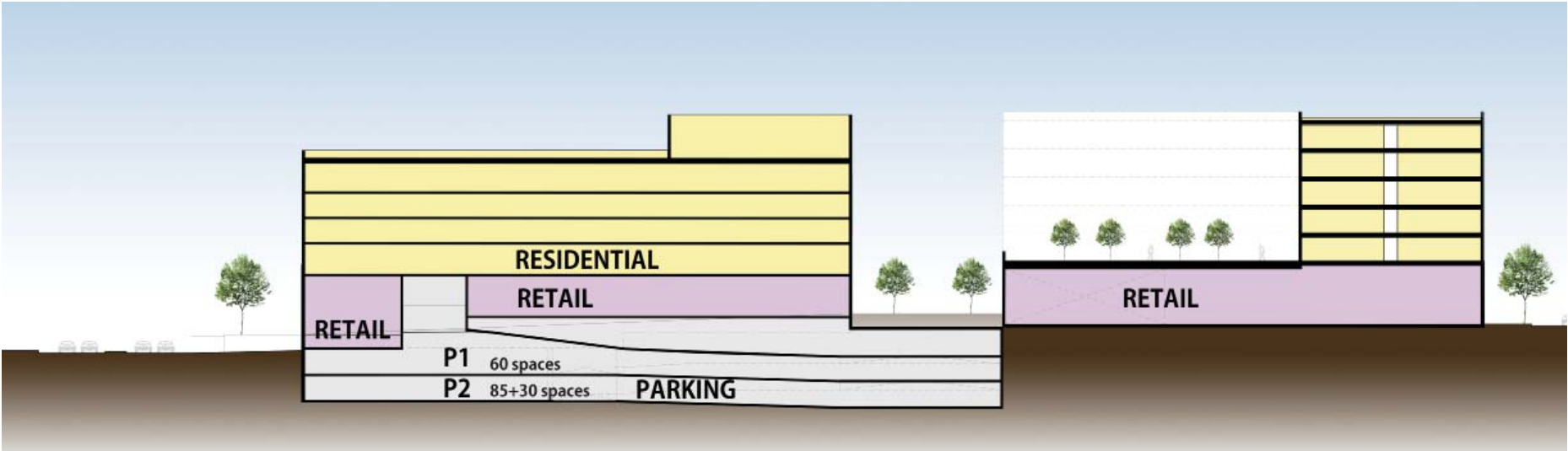
D3



D3 SECTION CC

D3

D2



D3 SECTION DD



