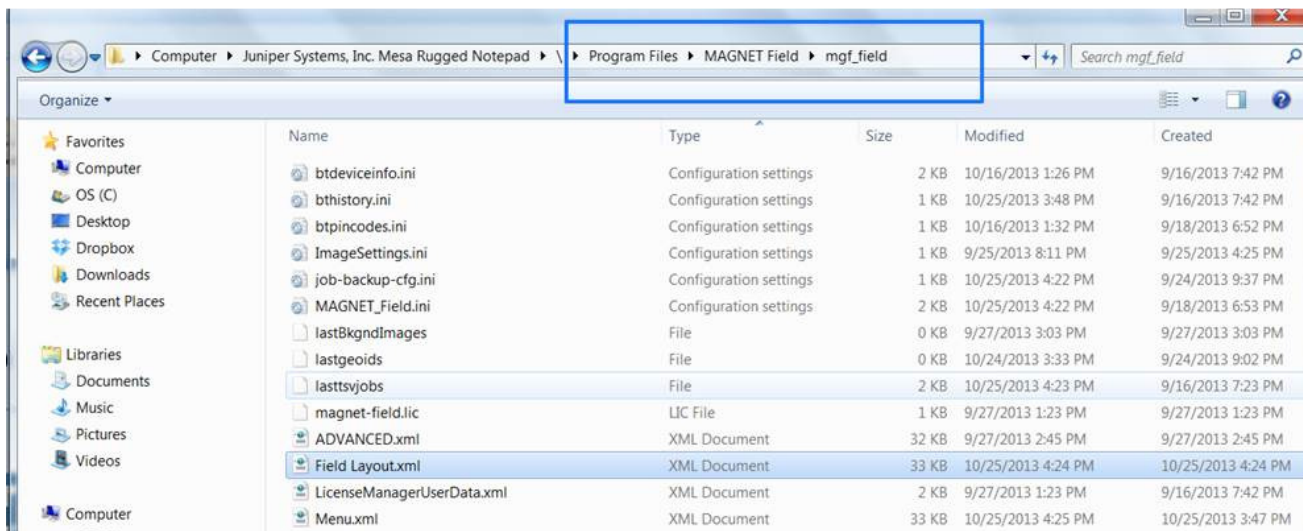


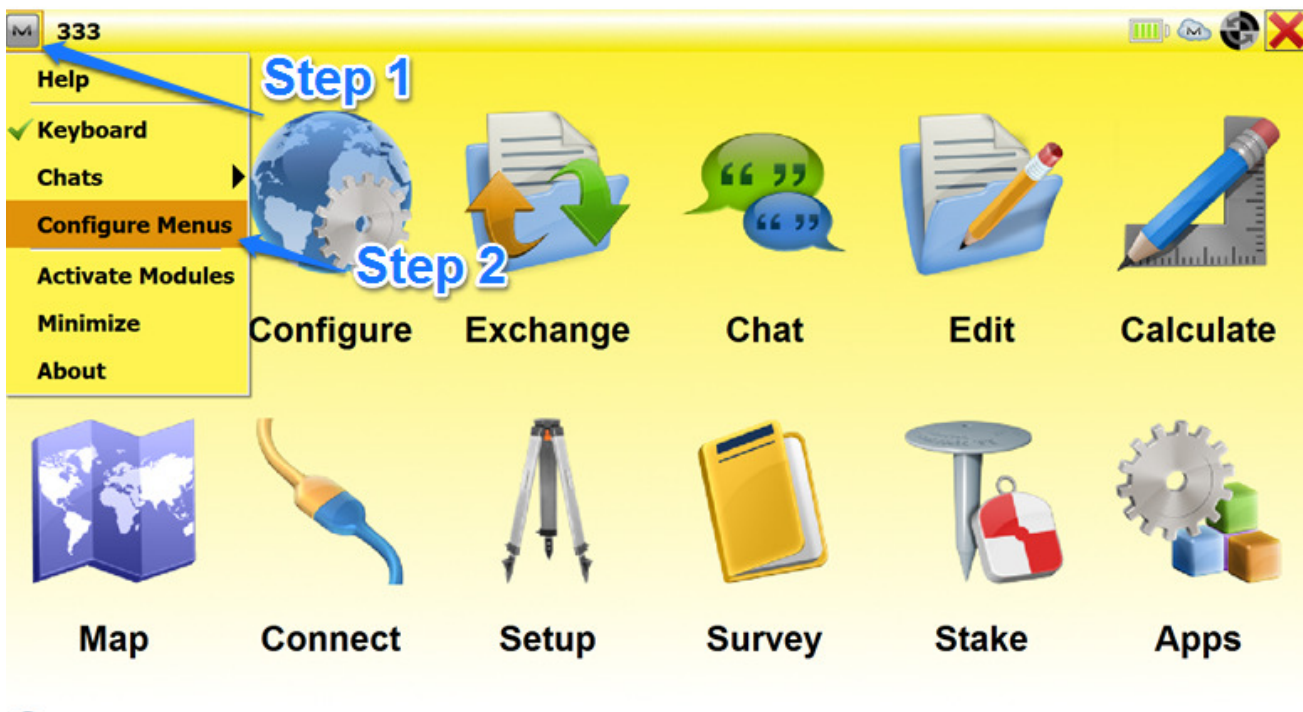
Magnet Field customized Menu for Magnet Layout:

Instructions are for loading a Layout Menu into the Standard Magnet Field Software.

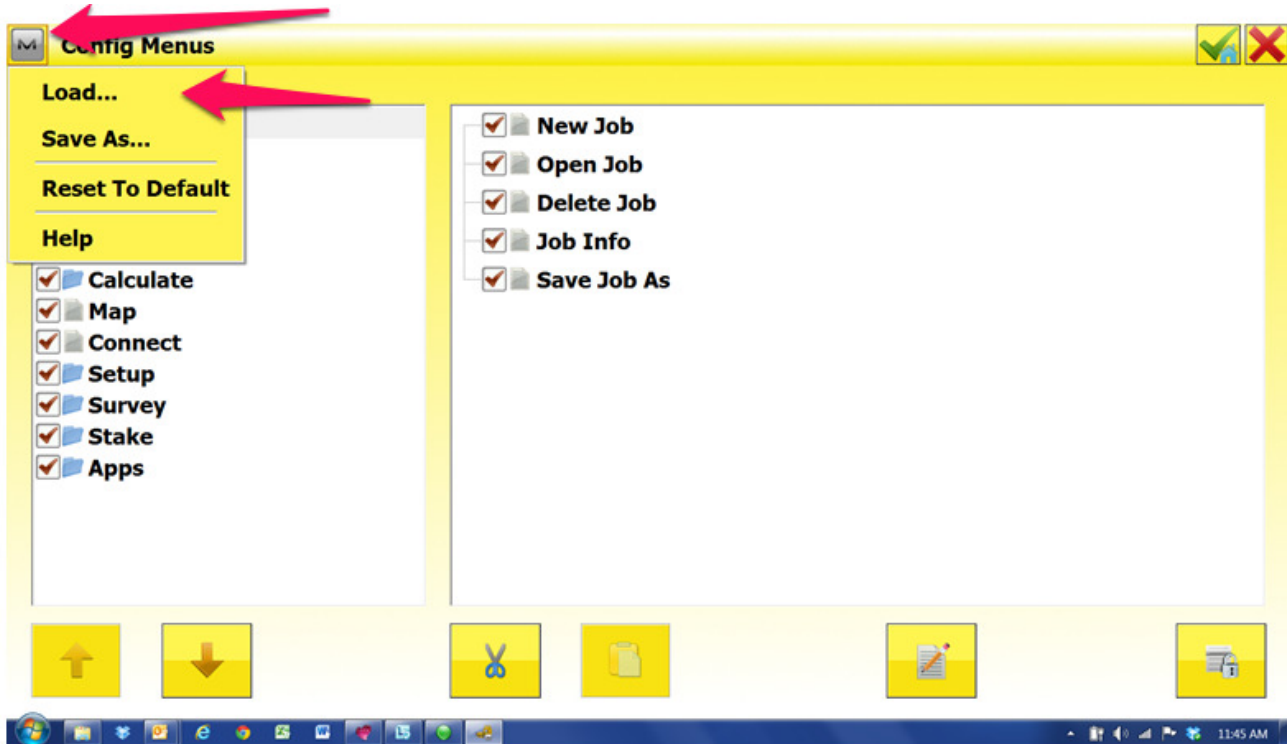
Connect Mesa to PC by USB cable and Window Mobile Sync. Once connected copy the Field Layout.xml file to the Mesa into the mgf_field directory.



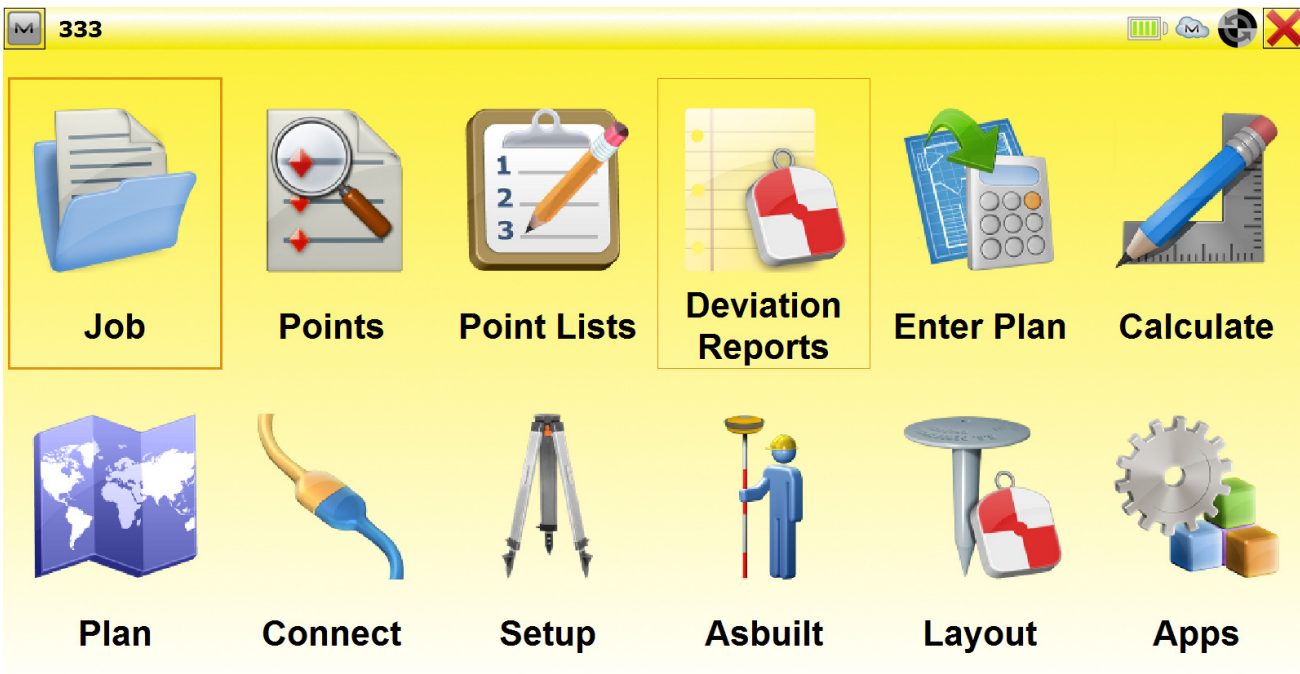
In Magnet Field click the Magnet Icon in top left. Then click configure Menus.



Click the Magnet Icon again the click Load. Choose the Layout Menu.XML file and you are good to go.



Now you have the layout Menu...



You can download the Field Layout.XML file here: <https://www.dropbox.com/s/3gkglei6b0w0zhc/Field%20Layout.xml>