

**Rabbit Anti-Villin Polyclonal: RC3115, RC3115RTU7**

**Intended Use:** For Research Use Only

**Description:** This gene encodes a member of a family of calcium-regulated actin-binding proteins. This protein represents a dominant part of the brush border cytoskeleton which functions in the capping, severing, and bundling of actin filaments. Two mRNAs of 2.7 kb and 3.5 kb have been observed; they result from utilization of alternate poly-adenylation signals present in the terminal exon.

**Specifications:**

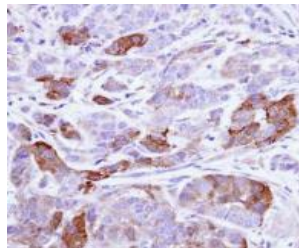
Clone: Polyclonal  
 Source: Rabbit  
 Isotype: IgG  
 Reactivity: Human, mouse, rat  
 Localization: Cytoplasm, membrane  
 Formulation: Purified in 0.1M Tris buffer, 0.1M Glycine, 10% Glycerol (pH7), 0.01% Thimerosal  
 Storage: Store at 2°- 8°C. For longer periods of storage, store at -20°C. Avoid repeat freeze-thaw cycles  
 Applications: IHC for FFPE, Frozen, ICC, IF, WB  
 Package:

Description	Catalog No.	Size
Villin Concentrated	RC3115	1 ml
Villin Prediluted	RC3115RTU7	7 ml

**IHC Procedure\***

Positive Control Tissue: Colon  
 Concentrated Dilution: 25-100  
 Pretreatment: Citra pH6.0 or EDTA pH8.0, 15 minutes using Pressure Cooker, or 30-60 minutes using water bath at 95°-99°C  
 Incubation Time and Temp: 30-60 minutes @ RT  
 Detection: Refer to the detection system manual

\* Result should be confirmed by an established diagnostic procedure.



FFPE xenograft tissue stained with anti-Villin using DAB

**References:**

1. Loss of villin immunoexpression in colorectal carcinoma is associated with poor differentiation and survival. Al-Maghrabi J, et al. ISRN Gastroenterol. Sep 5;2013:679724, 2013.
2. Differential diagnosis of malignant epithelial tumours in the liver: an immunohistochemical study on liver biopsy material. Al-Muhannadi N, et al. Ann Hepatol. Oct-Dec;10(4):508-15, 2011.
3. Expression of EpCam and villin in Barrett's esophagus and in gastric cardia. Anders M, et al. Dis Markers. 24(6):287-92, 2008.
4. Value of CDX2, villin, and alpha-methylacyl coenzyme A racemase immunostains in the distinction between primary adenocarcinoma of the bladder and 2nd colorectal adenocarcinoma. Suh N, et al. Mod Pathol. Sep;18(9):1217-22, 2005.
5. Immunoexpression of villin in neuroendocrine tumors and its diagnostic implications. Zhang PJ, et al. Arch Pathol Lab Med. Sep;123(9):812-6, 1999.