

Product information presented here reflects conditions at time of publication. Consult factory regarding discrepancies or inconsistencies.

**PUMP COMPANY**

Zoeller Family of Water Solutions™

MAIL TO: P.O. BOX 16347 • Louisville, KY 40256-0347  
 SHIP TO: 3649 Cane Run Road • Louisville, KY 40211-1961  
 (502) 778-2731 • 1 (800) 928-PUMP • FAX (502) 774-3624

visit our web site:  
[www.zoeller.com](http://www.zoeller.com)

# A-PAK ALARM SYSTEMS

The "A-Pak" Alarm system sounds a horn when a potentially threatening liquid level condition occurs. The horn can be silenced, but the alarm light remains on until the condition is remedied. Once the condition is cleared, the alarm will automatically reset.

A green "POWER ON" light indicates 120V primary power to the alarm. A low battery chirp feature indicates when the battery should be replaced. A red "ALARM" light indicates a high-level condition.

Models 10-1494



Tested to UL Standard  
 UL 508  
 & Certified to CSA  
 Standard  
 C22.2 No. 205

Models 10-2613



Tested to UL Standard  
 UL 508  
 & Certified to CSA  
 Standard  
 C22.2 No. 205

XXXX

## 10-1494 "A-PAK" Alarm

- NEMA 1 enclosure (INDOOR USE ONLY)
- Automatic alarm reset
- Horn is rated 87 decibels at 10'
- 9V battery back-up (battery not included)
- 15' alarm (12V) tethered switch
- 6' power cord
- Auxiliary dry contacts (use P/N 10-2614)
- UL / CSA listed

## 10-2613 "A-PAK" Alarm

Same standard features of our 10-1494 with:

- 15' alarm (12V) alarm reed switch
- Auxiliary dry contacts (use P/N 10-2615)

NOTE: It is always recommended to power the alarm from a separate circuit than the pump to avoid losing power to both during a tripped breaker scenario.

Model 10-0623



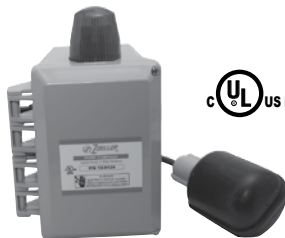
Tested to UL Standard UL 508  
 & Certified to CSA Standard  
 C22.2 No. 205

## 10-0623 INDOOR / OUTDOOR Alarm System

- NEMA 3R enclosure (6.5" X 4.5" X 3")
- Top-mounted alarm beacon
- Automatic alarm reset, horn silence switch and alarm test switch
- Horn is rated 85 decibels at 10'
- Pre-mounted terminal block with connections for pump and float switch
- 15' alarm (12V) tethered switch
- Power connections are field wired
- UL / CSA listed

10-0682 DELUXE Alarm System includes same features of our 10-0623 with:

- 20' alarm (12V) tethered switch
- 6' 115V power cord with water-tight cord connectors



UL US LISTED

Model 10-0126

10-0126 INDOOR / OUTDOOR Alarm System includes same features of our 10-0623 with:

- NEMA 4X thermoplastic enclosure (6" X 4" X 3")
- Horn is rated 88 decibels at 10'
- 5A auxiliary dry contacts
- UL listed to Canadian standard cULus

## 10-2616 Auto-Dialer System

The Auto-Dialer is a single channel voice dialer that can be used with any device that can provide a normally open / closed contact. It can be programmed to store up to four numbers to dial, including standard (voice) telephones, most cellular phones, and pagers. It will provide a 16 second pre-recorded message.

- Voice-Chip technology (NO TAPES)
- Record your own personal messages
- Dials each contact number up to four times
- Internal 9V battery back-up (Battery NOT Included)
- Tone or pulse dial only (NOT intended for digital phone lines)

Model 10-2616 Auto Dialer



# A-PAK ALARM SYSTEMS

Model 10-0028



## 10-0028 Alarm System

- Non-enclosed model
- Operates on 115V circuit
- 3" magnetic bell with transformer
- Mounts on standard utility box (not included)
- 15' alarm (12V) tethered switch

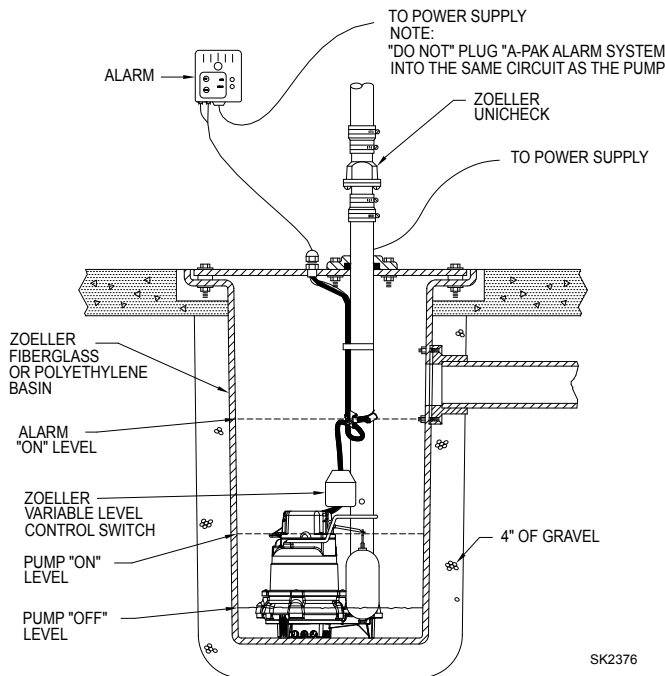


## 10-0015 / 10-0016 Bell Alarm System

- Non-enclosed model
- 10-0015 operates on 115V circuit  
10-0016 operates on 230V circuit
- 6" magnetic bell with transformer
- Mounts on standard utility box (not included)
- 15' alarm (12V) Tethered Switch
- Operates with 10-0743 float switch or mechanical alternator - see FM0495 (not included)



NOTE: All variable level float switches in this section are mechanically activated and do not contain mercury.



High water alarms provide the owner with early notification that the water level is continuing to rise in the application. This could be due to a pump failure or power outage, or the pump is simply overwhelmed in the application.

Zoeller recommends that ALL systems be installed with a high water alarm whether it is a small sump pump, sewage system, or a large outdoor lift station. Small alarms can be used on systems like water heaters or drain sinks. For a low upfront cost, a high water alarm saves the headache and stress of cleaning up a catastrophe after the fact.

An alarm system is designed to operate independently from the pump; meaning it can be used with any manufacturer's model. In fact, it is recommended that all alarms are wired in to a separate circuit breaker. This protects the alarm from being tripped if the pump inadvertently trips the circuit breaker. The last thing a homeowner wants is to NOT have an alarm due to the system not getting power. For instances like a complete power failure, most alarms include a 9V battery back-up that keeps power to the alarm during a storm or black-out.



**PUMP COMPANY**

MAIL TO: P.O. BOX 16347 • Louisville, KY 40256-0347  
SHIP TO: 3649 Cane Run Road • Louisville, KY 40211-1961  
(502) 778-2731 • 1 (800) 928-PUMP • FAX (502) 774-3624

Your Peace of Mind is Our Top Priority®

visit our web site:  
[www.zoeller.com](http://www.zoeller.com)