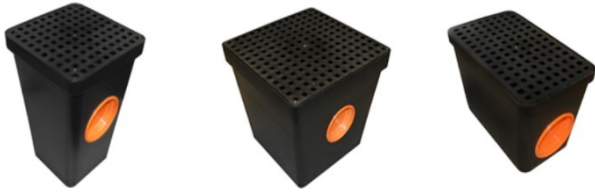




DRAIN SUMP ASSEMBLY & INSTALLATION GUIDE

Uses: Low areas in landscape, floors & driveways (in concrete), below downspouts

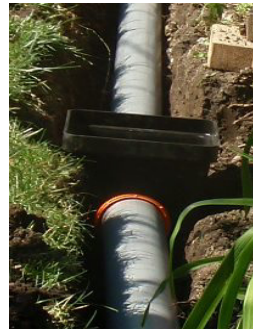


Installation Preparation

1) Determine if optional weep holes are to be added to drain sump to eliminate standing water. Weep holes allow standing water to drain from lower portion of drain sump. Use a drill to add weep holes.

2) Determine number of drain pipes that will connect to drain sump.

Options: One pipe can exit sump or multiple drain sumps can be connected - one pipe can enter and one can exit drain sump.



3) Determine size & type of drain pipe to be used in project.



Drain sumps can accommodate 1.5", 2", 3", 4" pipes / SDR35, Sch.40, or 4" Corrugated

S-85 seal not modified, used as a plug

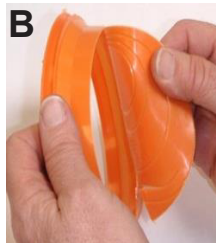
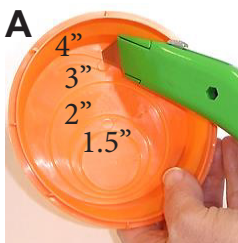
4) Modify the S-85 Universal Seal or use the S-85 as a plug



To modify the S-85 seal: Carefully...

A: Cut a slit in the indentation for the matching "rigid" pipe size: 4" 3" 2" 1.5". Starting at the top of the corresponding line and running down.

B: Using your fingers, tear the seal material until it is completely removed (C).



S-85 seal modified for 4" Corrugated Pipe. Cut was made at outer ring.



Attach the S-85 Seal to the drain sump as follows:

#1 Locate the channel on the outer edge of the seal.

#2 Align the channel with the rim of the hole on the sump. With one finger push the seal onto the sump hole rim and hold the seal in place.

#3 Use your other hand to work the seal channel onto the rim of the sump hole until the seal is completely attached and secure

#4 The S-85 seal is now secured to drain sump

Drain Sump Installation: Landscape



Excavate hole for drain sump and trench for drain pipe



Add aggregate to drain sump hole (Optional) to reduce freeze/thaw heaving. Aggregate can also be added around drain sump sides when back-filling

Place drain sump and drain pipe in hole to check for proper depth, make adjustments as needed.



Once proper depth and pitch is been achieved for drain sump and pipe, push the drain pipe into drain sump through the seal. Cover the grate to keep dirt from entering sump during back fill. Back fill around drain sump and over drain pipe

Periodic Maintenance



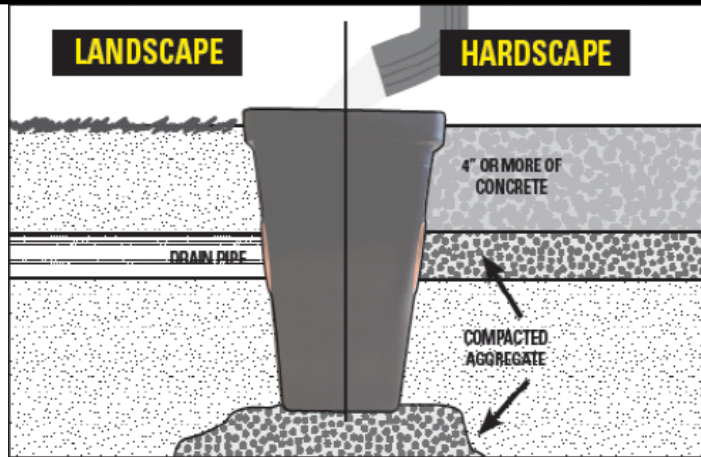
The deep "sump" at the bottom of the drain sump is designed to capture debris and sediment before it can exit the drain sump and clog buried drain pipes. Periodic cleaning is recommended.

- 1) Remove grate and with a small shovel or your hand remove sediment from the bottom of the sump.
- 2) Replace the grate.

Attaching & Removing Grate

Tuf-Tite drain sumps are made from durable weather-resistant polymer. Thermo-expansion and contraction can occur, which may make the grate more difficult to insert or remove. Use a metal hook (a bent portion of a coat hanger etc.) to remove stuck grate. Sanding or trimming the sides of the grate can make it easier to install and remove.

Drain Sump Installation: Hardscape



Tuf-Tite drain sumps can be installed in hardscapes including concrete. Drain sump should be leveled and surrounded in a minimum depth of 4" of concrete.

Tuf-Tite offers drain sump risers that increase the depth between the surface of the grate and the drain pipe, allowing for the use of a thicker concrete slab.

Contact your Tuf-Tite dealer for more information.