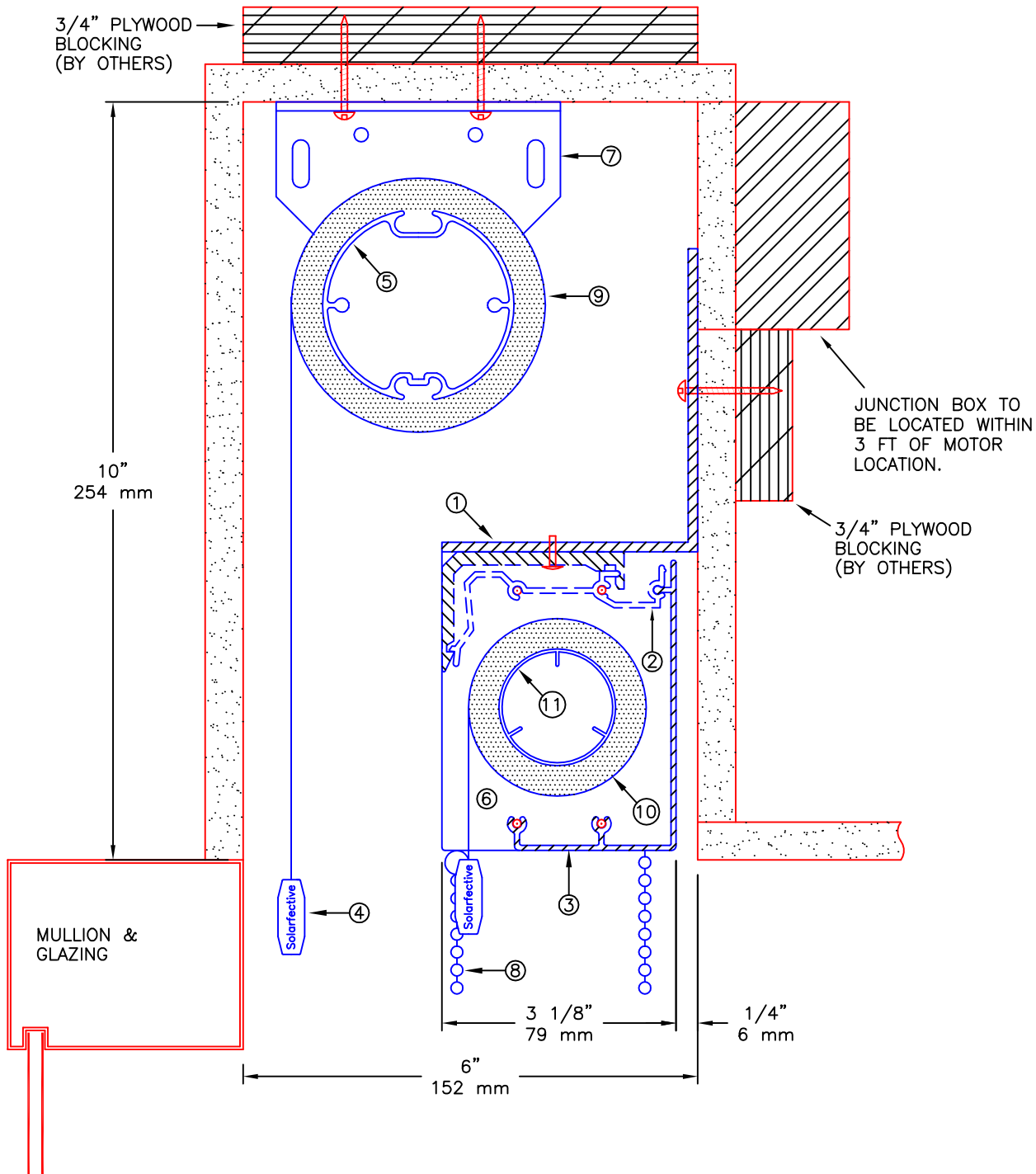


3/4" PLYWOOD
BLOCKING
(BY OTHERS)

DRYWALL POCKET
(BY OTHERS)



NOTES:

1. MOUNTING ANGLE
2. SPRING CLIP
3. EXTRUDED ALUMINUM FASCIA
4. EXTRUDED ALUMINUM EXTERIOR HEMBAR
5. 2 1/2" ϕ EXTRUDED ALUMINUM TUBE
6. ABS END BRACKET
7. END BRACKETS
8. STAINLESS STEEL BALL CHAIN
9. FABRIC: 1%, 3%, 5%, 10% OPENNESS OR BLACKOUT
10. FABRIC: 1%, 3%, 5%, 10% OPENNESS OR BLACKOUT
11. 1 1/2" ϕ EXTRUDED ALUMINUM TUBE

**** NOTE ****

JUNCTION BOX TO BE LOCATED WITHIN 3 FT OF MOTOR LOCATION. MOTOR LOCATION TO BE DETERMINED WITH SOLARFECTIVE REPRESENTATIVE.

Solarfective

55 Hymus Road, Scarborough
Ontario, Canada. M1L 2C6

Tel. (416) 421-3800
Fax. (416) 421-8424

Web Site: www.solarfective.com
Email: shades@solarfective.com

MOTORIZED BLACKOUT WITH
MANUAL SUN CONTROL IN POCKET
CEILING MOUNT

PROJECT: -

DATE:
JAN. 01, 2015

SCALE:
N.T.S.

FILE No.
-

DRAWN:
ADIE

DWG. No.
ES-8

REV
0