

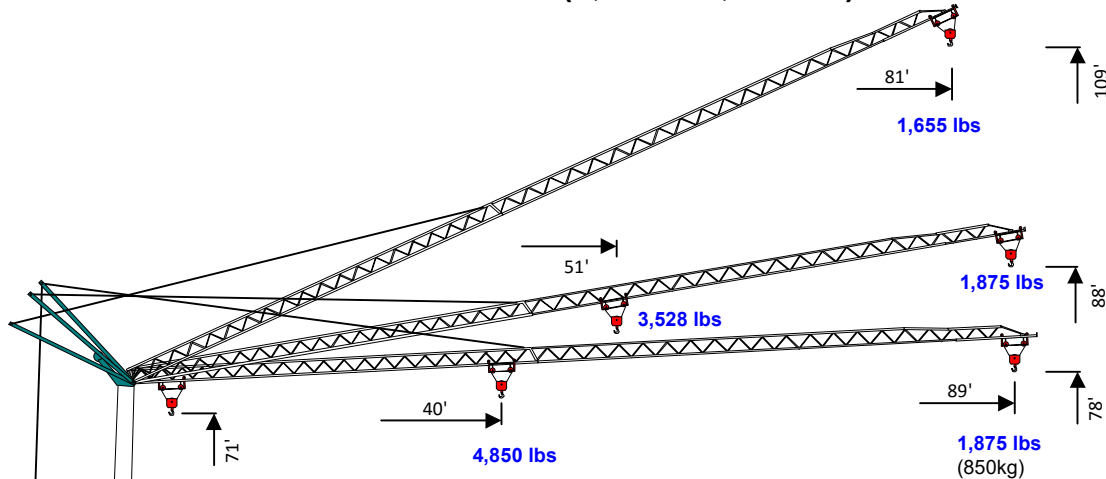


VICARIO

Self-Erecting Crane

V 1989/78

(1,875 lbs, 89'/75')

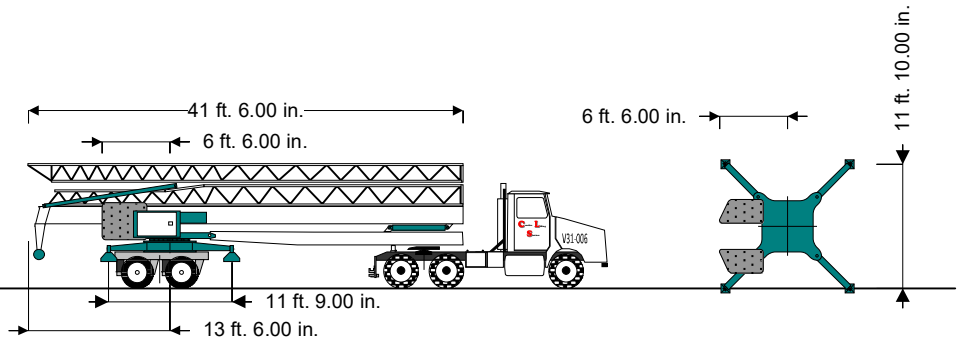


Power Requirements

Single Phase OR Three Phase
240V or 480V

Erection Ballast Blocks 2 X 5,735 = 11,470 lbs
 Completion Ballast 8 X 2,870 = 22,960 lbs
 Total Ballast: 34,430 lbs
 Crane Weight: 20,300 lbs
 Axles & Hitch 5,000 lbs
 Total Erected Weight: 59,730 lbs

Maximum
Reactions
44,050 lbs



Hook	Ft.	40	43	49	56	62	69	75	82	89
Radius	Meters	12.3	13	15	17	19	21	23	25	27
104'	Lbs	4,851	4,463	3,764	3,246	2,847	2,527	2,269	2,055	1,874
31.6m	KG	2.200	2.024	1.707	1.472	1.291	1.146	1.029	0.932	0.850