



AURA

ULTRA AESTHETIC
UNIVERSAL COMPOSITE



8

DENTINE
SHADES

3

ENAMEL
SHADES

ZERO

GUESSWORK

SIMPLY ELEGANT

Aura removes the guesswork from finding the right shade for your restorations with its unique linear and scientific arrangement that brings predictability and simplicity to customising shades.

Selecting the dentine shade plays a major role in determining the overall tooth colour [hue]. Nearly all dentine falls into the red-brown-yellow hue. Aura focuses on where tooth colours vary [the 'chroma'] and how strong or weak the chroma is to recreate the natural make-up and colours of the enamel and dentine.

0.5MM LAYER OF
AURA ENAMEL ENSURES
OPTIMAL SHADE MATCHING

**ENAMEL
DETERMINES**

5%

OF TOOTH COLOUR

AURA ENAMEL CHROMA

Choose the enamel shade from the incisal edge of the neighbouring teeth. Aura enamel shades E1, E2 and E3 are microfilled for easy polishability to a mirror finish and a high shine and gloss that is retained indefinitely.



E1

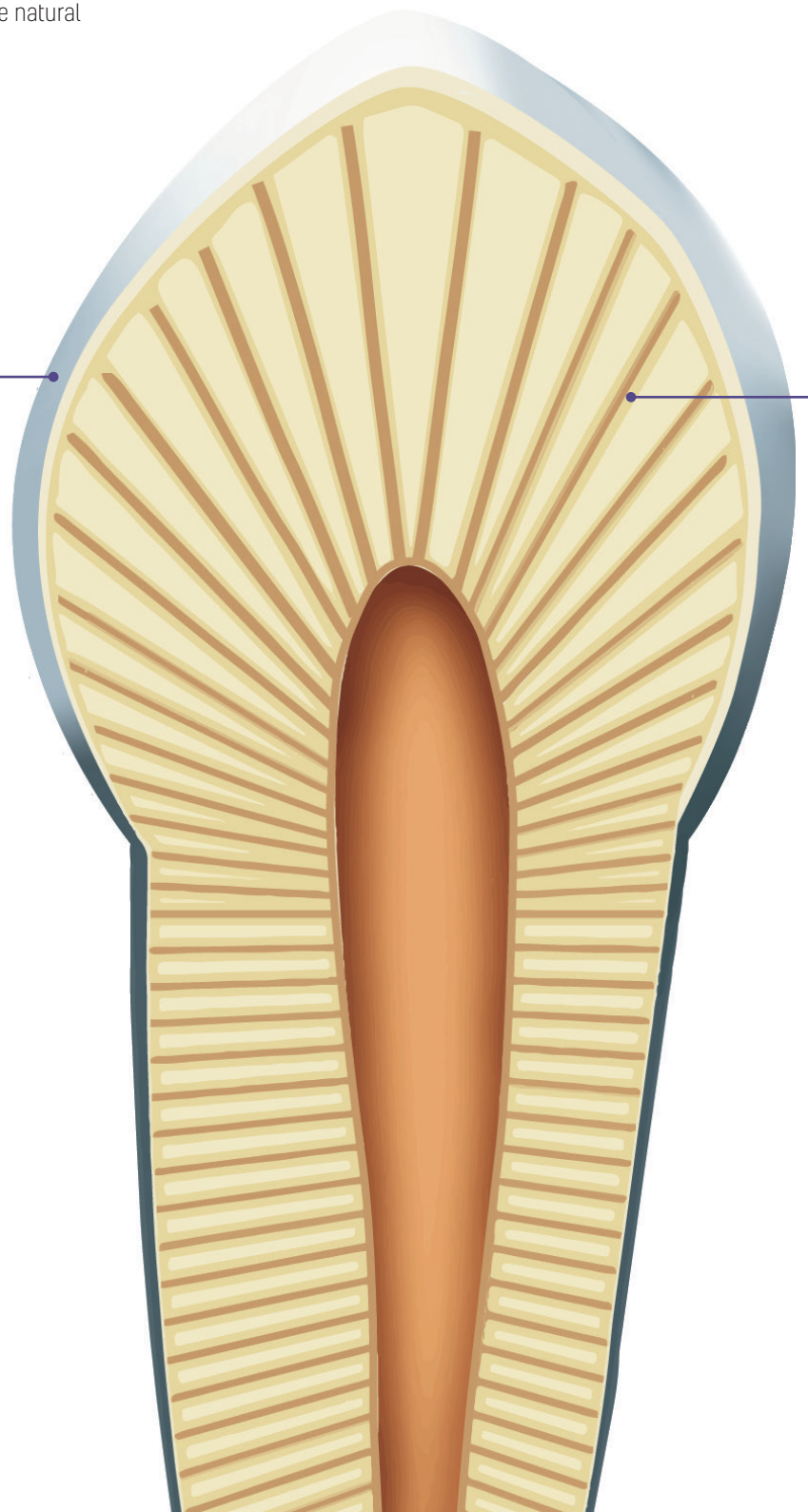
Young / bleached teeth [Most whitest / lightest, high opalescence, low translucency, designed to emulate young enamel]

E2

Adult teeth [Neutral in colour, low opalescence, intermediate translucency, designed to replace adult enamel]

E3

Senior teeth [Yellow/grey, high translucency, aged enamel]



ELIMINATE THE GUESSWORK

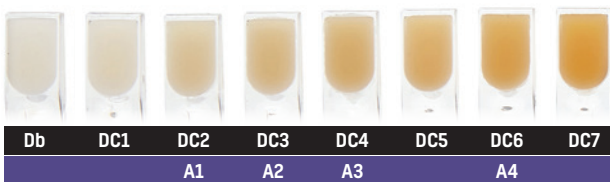
Dentine and enamel, with Aura ultra universal restorative system, is the easy solution to creating as close to natural anterior and posterior restorations.

Based on the natural make-up and colours of the dentine and enamel, Aura uses a logical yet innovative approach to shade-matching and layering in one single composite system. Its unique blend of filler and resin work in harmony to deliver the strength and aesthetics needed to provide long-lasting and life-like restorations with ease.

DENTINE DETERMINES
95%
OF TOOTH COLOUR

AURA DENTINE CHROMA

Match the shade to the dentine and the gingival/cervical region using the large chroma scale Db, DC1, DC2, DC3, DC4, DC5, DC6 and DC7. Aura dentine shades are nano-hybrid composites based on a single opacity and single hue that is fluorescent. Its excellent handling properties allow busy clinicians to contour and shape without slumping or sticking to instruments, making it possible to achieve beautiful restorations quickly and easily - first time, every time!



AURA DENTINE CHROMA
VITA® EQUIVALENT

.....
INCREASED WEAR RESISTANCE AND STRENGTH
.....

.....
SMOOTH HIGH GLOSS FINISH EVERY TIME
.....

.....
NON-STICKY CONSISTENCY MAKES IT SIMPLE TO SCULPT
.....

.....
NO SLUMPING AND HOLDS ITS SHAPE
.....

.....
QUICK AND EASY PLACEMENT IN SECONDS
.....

MINIMAL VOLUMETRIC SHRINKAGE

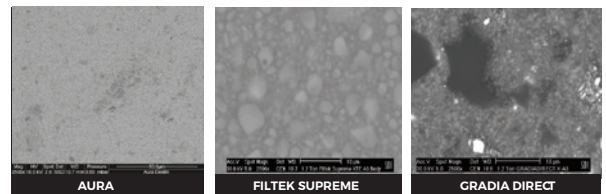
Aura combines a new low-shrinkage resin composition with a new Ultra High Density (UHD) filler.

LOW
2.2%*
VOLUMETRIC SHRINKAGE

*SDI internal data

EXPERIENCE THE MODERN MICROFILL

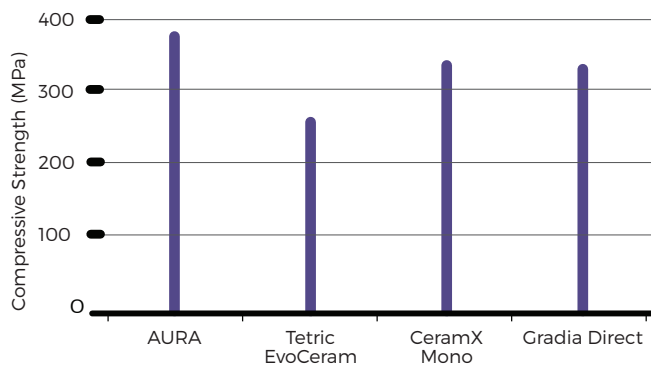
Aura combines a new low shrinkage resin composition with a unique morphology of ultra high density (UHD) filler. This provides the exceptional strength of a nano-hybrid composite that can withstand high compressive forces, coupled with an enamel shade range made from microfilled pre-polymerised particles for easy polishability and sculptability.



SEM images show the difference in size of fillers when compared with other composite materials. The smaller prepolymerised microparticles of Aura make it stronger than a standard microfill. This allows for fast and easy polishing to a long-lasting high gloss finish, without the "plucking effect" of large particles. Those with larger fillers are unable to achieve the same results.

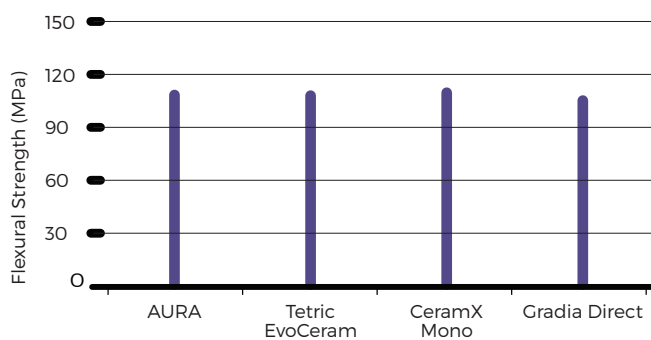
STRENGTH & STABILITY

IMPRESSIVE COMPRESSIVE STRENGTH*



The unique morphology of the UHD filler provides an extremely high strength interface that can withstand high compressive forces.

HIGH FLEXURAL STRENGTH*



Aura's superior flexural strength means it is able to withstand forces transmitted in the mouth.

*SDI internal data

ADVANTAGES

8 dentine shades and 3 enamel shades to reproduce the natural colours of teeth

A simple layering technique with zero guesswork

Superior strength and wear resistance

High polishability and gloss

Non-stick and easy to sculpt

Ultra High Density (UHD) filler with low-shrinkage resin

High flexural strength

INDICATIONS

	Enamel shade	Dentine shade
Anterior restorations	▪	▪
Posterior restorations	*	▪
Indirect inlays, onlays & veneers	*	▪
Core build ups		▪
Splinting	▪	▪
Sandwich technique with glass ionomer		▪

*For use as thin overlay over Dentine Chroma shade.



» The Aura system was chosen for the case due to its durability, natural selection of colours and its ability to allow underlying tooth structure to enhance the composite's appearance. «

Dr Hugh Flax DDS

ACHIEVABLE AESTHETICS

CASE STUDIES

INCISAL EDGE FRACTURE

Traumatised upper lateral incisor. The tooth was repaired using DC3 to replace the dentine, followed by shade E2 enamel shade. Following etching and Stae resin application, the Aura was sculpted to recreate the incisal edge. The restoration was finished and polished to create an invisible lifelike restoration.

Dr Linda Greenwall



AURA BONDING AFTER ORTHODONTIC ALIGNMENT

The incisal edges were bonded using Aura Composite in a segmental layering technique. Left lateral incisor tooth was shortened slightly and the central incisor edges were recreated using E1 and E2 palatally. The incisal rim had been created in the enamel, mamelons were sculpted into the teeth as the incisal edges needed to show more translucency. The incisors were sculpted into three cones to represent the lobes of the tooth using a probe and a flat plastic.

A small space was left in between so that the clear enamel was visible in between the lobes and at the incisal edge. As the teeth had been whitened, lighter shades were used. DC2, DC1 and DB bleached shade, followed by E1 enamel covering the labial surface. The form of the tooth was corrected and the incisal edge was polished.

Dr Linda Greenwall

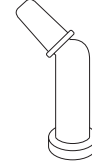
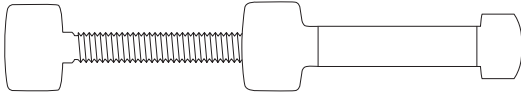


Dr Robert Katz, orthodontist, undertook the Invisalign orthodontic treatment

» I have been using Aura for 5 years. It is easy to use, durable and has excellent aesthetics. There are a variety of shades. The Aura Composite system is versatile and can be used for many bonding situations. There are great shades for bonding after tooth bleaching. «

Dr Linda Greenwall BDS, MGDS, RCS, MRD, RCS, MSC, FFGDP

ORDER DETAILS



SYRINGES

Aura Master Introductory Kit - Syringes	8565100
8x 4g syringe (Db, DC1, DC2, DC3, DC4, DC5, DC6, DC7), 3x 3g syringe (E1, E2, E3), 1x 4g syringe (bulk fill), 2x AURA MASTER SHADE GUIDE	
Aura Syringe Starter Kit - Light	8565102
3x 4g syringe (DC1, DC2, DC4), 1x 3g syringe (E2) 1x AURA LIGHT SHADE GUIDE	
Aura Syringe Starter Kit - Medium	8565104
3x 4g syringe (DC1, DC3, DC5), 1x 3g syringe (E2) 1x AURA MEDIUM SHADE GUIDE	
Syringe Refill Db - 4g	8560011
Syringe Refill DC1 - 4g	8560004
Syringe Refill DC2 - 4g	8560005
Syringe Refill DC3 - 4g	8560006
Syringe Refill DC4 - 4g	8560007
Syringe Refill DC5 - 4g	8560008
Syringe Refill DC6 - 4g	8560009
Syringe Refill DC7 - 4g	8560010
Syringe Refill Bulk Fill - 4g	8560012
Syringe Refill E1 - 3g	8560001
Syringe Refill E2 - 3g	8560002
Syringe Refill E3 - 3g	8560003

COMPLETS

Aura Master Introductory Kit - Complets	8565101
24x 0.25g complets (Db, DC1, DC2, DC3, DC4, DC5, DC6, DC7) 24x 0.2g complets (E1, E2, E3) 3x 0.25g complets (bulk fill) 1x complet applicator 2x AURA MASTER SHADE GUIDE	
Aura Complet Starter Kit - Light	8565103
60x 0.25g complets (DC1, DC2, DC4) 20x 0.2g complets (E2) 1x AURA LIGHT SHADE GUIDE	
Complet Refill Db - 0.25g	8565011
Complet Refill DC1 - 0.25g	8565004
Complet Refill DC2 - 0.25g	8565005
Complet Refill DC3 - 0.25g	8565006
Complet Refill DC4 - 0.25g	8565007
Complet Refill DC5 - 0.25g	8565008
Complet Refill DC6 - 0.25g	8565009
Complet Refill DC7 - 0.25g	8565010
Complet Refill Bulk Fill - 0.25g	8565012
Complet Refill E1 - 0.2g	8565001
Complet Refill E2 - 0.2g	8565002
Complet Refill E3 - 0.2g	8565003

AURA PRODUCT RANGE

Aura
Aura Easy
Aura Bulk Fill



YOUR SMILE. OUR VISION.



12-2020

M100264 D



+D036M1002641.

MADE IN AUSTRALIA
by SDI Limited
Bayswater, Victoria 3153
Australia 1800 337 003
www.sdi.com.au

AUSTRIA 00800 0225 5734
BRAZIL 0800 770 1735
FRANCE 00800 0225 5734
GERMANY 0800 100 5759
ITALY 00800 0225 5734

NEW ZEALAND +64 21 400 323
SPAIN 00800 0225 5734
UNITED KINGDOM 00800 0225 5734
USA & CANADA 1 800 228 5166