

Re-Entry Resource Guide

*Making a Smooth Transition from
Incarceration Back to the Community*



Getting Started

Entering back into the community after a recent incarceration can be overwhelming. Luckily, there are resources in Brown County that can help. Use this Re-Entry Resource Guide to get assistance in finding housing, employment, case management services, and support groups.

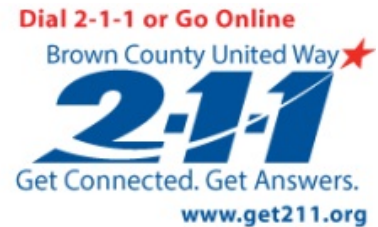
In This Resource Guide

Page

3-4	Support Groups
	Faith & Non-Faith- Based, Aftercare, Family
4	One-on-One Mentoring Support
5	Housing
6-7	Employment & Education
8-11	Sex-Offender Information
	Reporting Requirements, Housing

5, 9	ATTIC Correctional Services
5, 9	Accessing Long-Term Care Facilities
9	Brown County Community Treatment Center (CTC)
7	Casa Alba Melanie
4	Circles of Support
3	Come Journey
6	Criminal Records & the Workforce
7	Literacy Green Bay
10	Municipality Sex-Offender Ordinances
7	Northeast Wisconsin Technical College (NWTC)
3	Prison Aftercare Network (PAN)
10	Sex- Offender Housing Board Process (City of Green Bay)
8	Sex-Offender Reporting Requirements
3	Straight Street
4	Steps to Success
3	Think Again
7	Wisconsin Job Center

Need more help?



Provides confidential, easy-to-use, and free help finding non-emergency services in the community, such as:

- Transportation
- Food
- Temporary housing
- Mental health treatment
- Drug & alcohol addiction treatment
- Other needs

Call or click 24 hours a day, 7 days a week.

2-1-1 Plus Sites:

- Free computer, internet, and phone access

Find a list of locations in this resource guide (page 11).

Support Groups— Faith-Based

There are different types and styles of support groups available in Brown County for ex-offenders. Some focus on faith as a support in the journey of re-entering into the community, and others do not. Attending support groups allows an ex-offender to meet with other ex-offenders and a trained support group leader. This can help to make the transition from incarceration to the community easier.

NOTE: There are regulations against ex-offenders being with other ex-offenders after release. Check with the Parole Officer (PO) prior to attending any support group meetings.

Website/ Resources

Prison Aftercare Network (PAN)

Serving as an umbrella organization, PAN is a network of ministries, organizations, and individuals seeking to connect Christian individuals and ministries, providing resources & information to reduce recidivism.

Date: 3rd Friday of every month

Time: 10:00 am – 12:00 pm

Location: Nativity of Our Lord Parish- Lounge (2270 S. Oneida St., Green Bay; Door #7)

Contact: Peter Galowski (changedheartministries@yahoo.com, 920-713-8900)

Bob Van Domelen (bob@brokenyoke.org, 262-751-1128)

Website: <http://tinyurl.com/PANetwork>

Aftercare

Straight Street

Helps ex-offenders re-enter the community.

Date: 2nd & 4th Tuesday of every month

Time: 6:00 pm – 8:00 pm

Location: Christian Community Center (515 S. Monroe Ave., Green Bay; enter through rear door)

Contact: Peter Galowski (changedheartministries@yahoo.com, 920-713-8900)

Think Again

Helps ex-offenders re-enter the community.

Date: 1st & 3rd Wednesday of every month

Time: 6:00 pm - 8:00 pm

Location: Transformation House (436 S. Jefferson St., Green Bay; lower level)

Contact: Barb Williams (Barbwilliams1025@yahoo.com, 920-819-1912)

Family

Come Journey

This support group is specifically for families with loved a one in prison, jail, or recently released. Childcare is available.

Date: 2nd Thursday of every month

Time: 6:00 pm – 7:30 pm

Location: Christ Alone Church (505 E. Allouez Ave., Green Bay; Use main entrance)

Contact: Lois Pulvermacher (loisCTB@gmail.com, 920-712-4526)

Cheri Galowski (cmgalowski@yahoo.com, 920-469-2671)

Support Groups— Non-Faith-Based

Aftercare Circles of Support

The purpose of this support group is to provide recently released prisoners with a support network of local volunteers (a circle) to give guidance and direction. Attendees can get assistance with employment, education, housing, and more. Ex-offenders must be on state supervision, with permission from PO (pre-approval) to attend the meeting. This group is offered in conjunction with Goodwill Industries.

Contact: Anne Strauch (astrauch_gw@gwicc.org, 920-968-6832)

One-on-One Mentoring Support

Sometimes a little more one-on-one assistance is helpful when making the transition back to the community.

Steps to Success

This program is specifically for inmates (pre and post release) from the Taycheedah Correctional Institution. Participants are provided education, support, and other case management services. In addition, support groups are organized through Family Services of Northeastern Wisconsin and Bay Area Workforce Development on an as-needed basis for participants in the Steps to Success program. The entire program is funded by Bay Area Workforce Development and the Department of Corrections (DOC).

Eligibility requirements:

Pre-released: Inmates who are to be released in the next six-nine months, with one year of post-release supervision, must be willing/are able to work full-time (or part-time if attending school). Inmates must also meet the recommended supervision level by the DOC.

Post-released: Inmates can voluntarily attend the program to find & keep employment, locate suitable housing & transportation options, and get connections for education, skills training, and needed supplies to transition back into the community.

Location: Family Services of Northeastern Wisconsin (300 Crooks St, Green Bay)

Contact: Meika Burnikel (mburnikel@familyservicesnew.org, 920-437-3540)

Need help immediately?

Facing a crisis situation?

**Contact the Family Services-
Crisis Center:**

- Call **920-436-8888** for direct assistance
24 hours a day, 7 days a week

Housing

Finding a place to live after being released from prison can be difficult, especially when there are concerns about a new criminal record/background. Try attending one of the support groups or one-on-one mentoring groups (listed on previous pages) to speak directly with ex-offenders going through the same issues. Support group leaders can also provide assistance. Listed below are more resources related to finding housing, both temporary and permanent.

ATTIC Correctional Services, Inc. (Alternative To Traditional Incarceration of Citizens)

ATTIC offers a variety of services, including two housing programs for ex-offenders: Transitional Living Program and Community Residential Program. Referrals to the housing programs must be made through a Parole Officer (PO) or the Department of Corrections (DOC).

Contact: www.correctionalservices.org

Accessing Long-Term Care Facilities

If an ex-offender needs to access any type of long-term care facility (including adult family homes, assisted livings, and nursing homes), it is advisable to tell the admissions director about any current supervision prior to admission. Facilities are responsible to ensure the safety and well-being of all residents. If a facility has a number of vulnerable residents, it could be determined not to admit a particular ex-offender on the basis of protecting other residents.

Contact: Department of Corrections (DOC) (www.doc.wi.gov, 608-240-5000)

Micah Center

If someone is homeless or facing possible homelessness, this daytime drop-in center can help find community resources through one-on-one counseling, case management, classes, and workshops.

Hours: Winter (Nov. 1—April 30) Monday-Friday, 9:00 am-4:30 pm; Sunday, 12:00 pm-4:00 pm
Summer (May 1—Oct. 31) Monday-Thursday, 8:00 am-4:30 pm; Friday, 8:00 am - Noon
Location: 700 E. Walnut St., Green Bay
Contact: 920-617-8700, www.stjohnhomelessshelter.org

Looking for a place to stay?

Trying to find permanent housing?

At risk for homelessness?

Contact 2-1-1:

- Dial 2-1-1 for direct assistance 24 hours a day, 7 days a week

Employment & Education

Employers are concerned about knowing if someone has a criminal record. Legally, they must follow due diligence in the hiring process. Employers can be penalized if they hire someone they knew (or should have known) is dangerous or unfit for a job. They are also concerned if a person with a criminal past may re-offend in the future.

Below are some tips to help start applying for employment. Find agencies in the community that can assist with finding education & employment on the following page of this resource guide (page 7).

Criminal Records & Getting Back Into the Workforce

Understanding Ex-Offender Rights: See an Attorney

Discuss rights and options with an attorney. There are some cases where a person can legally answer “no” on a question about a past offense. In some states, for example, ex-offenders do not have to report arrests that did not end in a conviction, are not currently pending, or cases in pre-trial stages where the conduct may not be considered a criminal offense (i.e. pre-trial diversion or delayed entry of judgment).

Seek Professional Assistance

There are organizations for past offenders. Some of these organizations have relationships with employers who are willing to give an ex-offender a chance. Get help preparing a resume, plus practice interview skills to better answer questions about a criminal background and highlight skills the employer is looking for.

Build a Resume and Find a Job

Most communities provide various programs to help prepare a resume. Family or friends can help, and also be used as references. Finding that first job is important. It may not be the first choice in jobs, but will help rebuild work skills & history. Have patience, as rebuilding a work history takes time.

Be Honest

Almost every application asks if someone has a criminal record. Lying puts someone at risk of losing the job if a record is discovered, no matter the nature of the offense. On the other hand, being honest about a past criminal history could also mean losing the job. The key is to explain a criminal history during the interview process. An employer will see a person with great recommendations and an excellent job history. As a conviction date gets older and a person’s job history is stronger, employers will see the criminal record as less of an issue.

Source: Excerpt from “Privacy Rights Clearing House”, 09/2003, www.privacyrights.org

See an Attorney- *Legal Action of Wisconsin*

- Provides free legal advice and representation in civil matters
- Call **920-432-4645** or **800-236-1127**
- Walk-ins: 201 W. Walnut St., Ste. 203, Green Bay 54303
(Monday-Friday, 8:30 am—4:30 pm)
- Visit www.legalaction.org for more information

Employment & Education

Much like housing, ex-offenders are often afraid to being applying for a job, based on their new criminal background/ history. However, ex-offenders can work even with such a background. Getting connected to professionals is the key to making sure the transition back into the community is successful. Developing a successful work history after being released from prison can help employers see the skills of the ex-offender, and not the criminal background.

Similar to employment, finishing a high school degree (GED) or earning higher education credits can also help make the transition from incarceration to working in the community easier.

Education Casa Alba Melanie

Casa Alba offers courses throughout the year to help anyone in the community study for and complete a GED (General Education Development), or high school equivalency exam.

Hours: Monday-Friday, 10:00 am—4:30 pm
Location: 314 S. Madison St., Green Bay 54301
Contact: 920-445-0104

Literacy Green Bay

This agency offers adults and families the ability to improve skills in reading, writing, math, English language, computers, and other workforce skills. Adult Tutoring and English Language Learner Classes are just two of the programs available, with both day & evening class hours. An onsite computer lab is open to students enrolled in the programs.

Location: Literacy Green Bay (424 S Monroe Ave, Green Bay)
Contact: 920-435-2474

Northeast Wisconsin Technical College (NWTC)

NWTC offers adult education classes for a variety of different degrees, diplomas, and certificates. There are certain eligibility requirements, and potential interested students must fill out an application.

In addition, the NWTC Career Services office is open to the general public. This office provides one-one-one meetings, group assistance, plus events & workshops on job searching & higher education. Using the how-to advice from the Career Services staff is especially helpful for those that do not know where to begin after being released from prison.

Location: NWTC Campus (2740 W Mason St, Green Bay)
Career Services (Student Center, Room SC138)
Contact: Main Office (920-498-5444, 800-422-NWTC)
Career Services (920-498-6250)

Employment Wisconsin Job Center

The Job Center in Brown County is a “one-stop-shop” that offers a large variety of services and programs to both job seekers & employers. Within the center, several agencies provide services to assist people with meeting their employment goals, including job seeking workshops, career counseling, and computer labs. Assistance is also provided in earning a GED (high school degree). Most services are free of charge.

Date: Mondays-Fridays
Time: 7:45 am – 4:30 pm
Location: Brown County Job Center (701 Cherry St, Green Bay)
Contact: www.wisconsinjobcenter.org, 920-448-6760

Sex Offenders

Those convicted of sexual-related offenses have requirements and regulations over & above those convicted of non-sexual-related offenses. To get a better understanding of the resources available in Brown County for sex-offenders, including municipality ordinances/housing requirements and the Sex Offender Housing Board Process, take a look at the section below.

Reporting Requirements

Registered sex offenders have certain reporting requirements in the United States. Each state has a Sex-Offender Registry, which is available to the public through the DOC's website (<http://doc.wi.gov/community-resources/wi-sex-offender-registry>).

Use this section to better understand where and when reporting needs to occur in Brown County.

A registered sex offender must report to the Wisconsin Sex-Offender Registry (WI Registry) if any of the following occur:

- Move or change residence*
- Become incarcerated or on parole**
- Start/Stop working
- Start/Stop volunteering
- Start/Stop going to school

*If moving outside the state of Wisconsin, a person must report to the WI Registry, as well as the new state's registry.

**Incarceration means any length of time (in prison or jail). Notify the WI Registry of the location of incarceration and the anticipated release date. If on parole, the offender must report changes to the parole before they occur (note that permission must be granted by the PO before changes can be made). If not currently on parole but changes will be made, an offender has 10 days after the change to report the information.

Contacting the Wisconsin Sex-Offender Registry can happen in the following ways:

Mail

Wisconsin Sex Offender Registry
PO Box 7925
Madison, WI 53707-7925

Phone

(608) 240-5830
(888) 963-3363

Fax

(608) 240-3355

Email

bopadmin@doc.state.wi.us

After the information is received, a letter to confirm the information will be mailed to the offender. This letter must be signed, dated, and returned by mail within 10 days.

Sex-Offenders– Housing

Finding a place to live after being released from prison can be difficult, especially when there are concerns about a new criminal record/background related to sexual offenses. Try attending one of the support groups or one-on-one mentoring groups (listed on previous pages) to speak directly with ex-sex-offenders going through the same issues. Support group leaders can also provide assistance. Listed below are more resources related to finding housing, both temporary and permanent.

ATTIC Correctional Services, Inc. (Alternative To Traditional Incarceration of Citizens)

ATTIC offers a variety of services, including two housing programs for ex-offenders: Transitional Living Program and Community Residential Program. Referrals to the housing programs must be made through a Parole Officer (PO) or the Department of Corrections (DOC).

Specifically for sex-offenders, ATTIC offers intensive treatment after being released. Treatment can range from aftercare (16-20 weeks) to high-risk (60 weeks). Referrals to the sex-offender treatment programs must be made through a Parole Officer (PO) or the Department of Corrections (DOC).

Contact: www.correctionalservices.org

Accessing Long-Term Care Facilities

If a sex-offender needs to access any type of long-term care facility (including adult family homes, assisted livings, and nursing homes), it is advisable to tell the admissions director about a criminal past prior to admission. Facilities are responsible to assure the safety and well-being of all residents. If a facility has a number of vulnerable residents, it could be determined not to admit a particular ex-offender on the basis of protecting other residents. Also, if a registered sex-offender has residency restrictions due to the nature of the crime, certain facilities might not be an option because of their locations. For example, a nursing home near a school would not accept a registered sex-offender if the ordinance is for children.

Contact: Department of Corrections (DOC) (www.doc.wi.gov, 608-240-5000)

Brown County Community Treatment Center (CTC)

If a sex-offender is homeless and needs assistance finding housing or mental health resources, contact the Brown County Outreach staff, Barb Kramer. Barb can also be contacted through outreach efforts at the local homeless shelters.

Location: Brown County Community Treatment Center (3150 Gershwin Dr., Green Bay)
Contact: Barb Kramer (920-391-6966)

Micah Center

If someone is homeless or facing possible homelessness, this daytime drop-in center can help find community resources through one-on-one counseling, case management, classes, and workshops.

Hours: Winter (Nov. 1—April 30) Monday-Friday, 9:00am-4:30pm; Sunday, 12:00pm-4:00pm
Summer (May 1—Oct. 31) Monday-Thursday, 8:00am-4:30pm; Friday, 8:00am-Noon
Location: 700 E. Walnut St., Green Bay
Contact: 920-617-8700, www.stjohnhomelessshelter.org

Sex-Offenders– Housing

Brown County municipalities have different restrictions on where sex-offenders can live. This can make finding housing difficult when re-entering into society. With a little planning, however, a sex-offender can be successful.

NOTE: Housing restrictions for sexual offenses apply only to charges that involve a minor. The tier applied to a sexual offense/sex-offender will determine the restrictions.

Municipality Ordinances See the list below to determine if (“yes”) a municipality has an ordinance for housing/ residential density restrictions, or (“no”) does not have an ordinance for housing.

Yes		No
Allouez	Humboldt	Greenleaf
Ashwaubenon	Morrison	Ledgeview
Denmark	New Denmark	Rockland
Eaton	Pulaski	
Glenmore	Scott	
Green Bay* (city & town)	Suamico	
Holland	Wrightstown	
Howard		

The municipalities listed below do not have housing (residential density) restrictions, but they do have restrictions against loitering.

Loitering	Report to Police Department for Housing Permission
Bellevue	Bellevue
De Pere	De Pere
Hobart	
Lawrence	

[Contact the individual municipality for the most current ordinance information.]

*The City of Green Bay regulates how closely certain sex offenders **can be** to schools, parks and day care centers (proximity ordinance). The City of Green Bay also regulates how closely certain sex offenders **can reside** to schools, parks, and day care centers (residency ordinance). These regulations apply to sex-offenders convicted of sexual offenses against children.

Sex Offender Housing Board Process

(City & Town of Green Bay)

If a sex-offender wants to live in a restricted area, the offender must apply through the Sex Offender Housing Board. There are steps to follow in the application process:

1. Complete a Sex Offender Residency Application.
(Available at the City of Green Bay’s website, www.greenbaywi.gov. Click on Departments, City Attorney’s Office, Resources, and then Sex Offender Information.)
2. Submit the completed application to the City of Green Bay.
(City of Green Bay Clerk, 100 N. Jefferson St., Room 106, Green Bay, WI 54301)
3. The offender will be notified of the date and time of the appeal hearing before the Green Bay Sex Offender Residence Board. This could be 30-45 days after the city receives the appeal application.

NOTE: The Green Bay Sex Offender Residence Board meets the second Wednesday of every month. Applications must be received by the previous Wednesday in order to be on the agenda for that month.

Some important information required on the Sex Offender Residency Application:

- Address of the residence the sex-offender intends to move to
- Listing of sexual offenses and criminal history
- Completed treatment programs

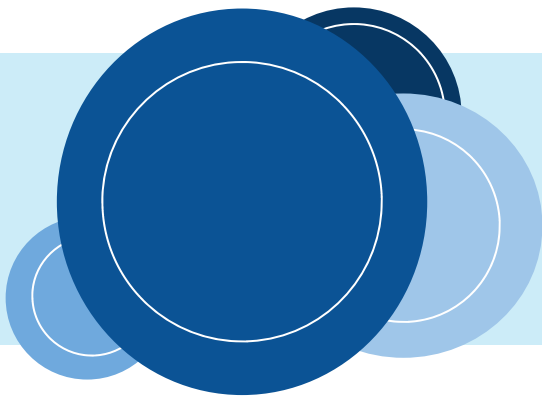
2-1-1 Database Plus Sites

The Brown County United Way 2-1-1 Database provides confidential, easy-to-use, and free help finding non-emergency services in the community. The agencies listed below are considered 2-1-1 Database Plus Sites because they provide free computer, internet, or phone access to use the database during their regular business hours.

Dial **2-1-1** (24 hours a day, 7 days a week) or visit the website (www.get211.org).

NOTE: This is not a complete list of 2-1-1 Database Plus Sites.

<p>Brown County Library– All Branches</p>	<p>Locations: Central (515 Pine St., Green Bay 54301) (920-448-4400) Ashwaubenon (1060 Orlando Dr., Green Bay 54304) (920-492-4913) Denmark (450 N. Wall St., Denmark 54208) (920-863-6613) East (2255 Main St., Green Bay 54302) (920-391-4600) Kress/De Pere (333 N. Broadway, De Pere 54115) (920-448-4407) Pulaski (222 W. Pulaski St., Pulaski 54162) (920-822-3220) Southwest (974 Ninth St., Green Bay 54304) (920-492-4910) Weyers-Hilliard/Howard (2680 Riverview Dr., Green Bay 54313) (920-448-4405) Wrightstown (3615 Main St., Wrightstown 54180) (920-532-4011)</p>	
<p>Literacy Green Bay</p>	<p>Location: 424 S. Monroe Ave., Green Bay 54301 Phone: 920-435-2474 Hours: Monday-Thursday, 9:00am-5:00pm</p>	<p style="text-align: center;">ADRC</p> <p>Location: 300 S. Adams St., Green Bay 54301</p> <p>Phone: 920-448-4300</p> <p>Hours: Monday-Friday, 8:00am-4:30pm</p> <p>Assists older adults (60+), adults with disabilities (17 years & 6 months-59), and their caregivers.</p> <p>Talk to ADRC staff to get answers to questions and find the right resources in the community.</p>
<p>Neighborworks Green Bay</p>	<p>Location: 437 S. Jackson St., Green Bay 54301 Phone: 920-448-3075 Hours: Monday-Friday, 9:00am-4:00pm</p>	
<p>NEW Clinic at NWTC</p>	<p>Location: 2740 W. Mason St., Green Bay 54304 (Health Sciences Center) Phone: 920-498-5436 Hours: Monday-Thursday, 7:30am-12:00noon & 1:00-5:00pm</p>	
<p>The Gathering Place</p>	<p>Location: 1001 Cherry St., Green Bay 54301 Phone: 920-430-9187 Hours: Monday, Tuesday & Friday, 11:00am-4:00pm; Wednesday & Thursday, 11:00am-8:00pm</p>	
<p>The Salvation Army</p>	<p>Location: 626 Union Ct., Green Bay 54303 Phone: 920-497-7053 Hours: Monday-Friday, 8:00am-4:30pm</p>	
<p>Wisconsin Job Center</p>	<p>Location: 701 Cherry St., Green Bay 54301 Phone: 920-448-6772 Hours: Monday-Friday, 7:45am-4:30pm</p>	



Dial 2-1-1 or Go Online

Brown County United Way 

2-1-1

Get Connected. Get Answers.

www.get211.org

*Produced from the community partnership of the Brown County 2-1-1 Database
(Brown County United Way, ADRC of Brown County,
and Family Services of Northeastern Wisconsin).*

Material and information provided through the assistance of these community partners:

The ATTIC Correctional Services, Inc.
Brown County Community Treatment Center
JOSHUA
Micah Center
Prison After Care Network

Updated: August 2016