



SHEERWEAVE
BY PHIFER®

STYLE

7800 / 7850

7800 - BLACKOUT FABRIC

7850 - LIGHT-FILTERING FABRIC



WEAVING
EXCELLENCE
WITH
INNOVATION

Code	Color	SOLAR OPTICAL PROPERTIES				SHGC/G VALUE g-tot (glass & blind)	
		TS	RS	AS	TV	SINGLE 1/4 CL	INSULATING 1 HA
STYLE 7800 - BLACKOUT							
UB0	Blanco	0	70	30	0	0.24	0.19
UB7	Fossil	0	70	30	0	0.24	0.19



PRODUCT CERTIFIED FOR
LOW CHEMICAL EMISSIONS
UL.COM/GG
UL 2818



MIF Seal of Approval



TS = Solar Transmittance
RS = Solar Reflectance
AS = Solar Absorptance
TV = Visual Transmittance

SHGC = Solar Heat Gain Coefficient

1/4 CL = 1/4" Clear Glass
1 HA = 1" Heat Absorbing Glass

Fabrics Installed Internally
Zero-Degree Profile Angle

For additional performance values,
test references and technical
definitions visit us at phifer.com.



STYLE
7800

UB0
Blanco

UB1
Almond

UB2
Raffia

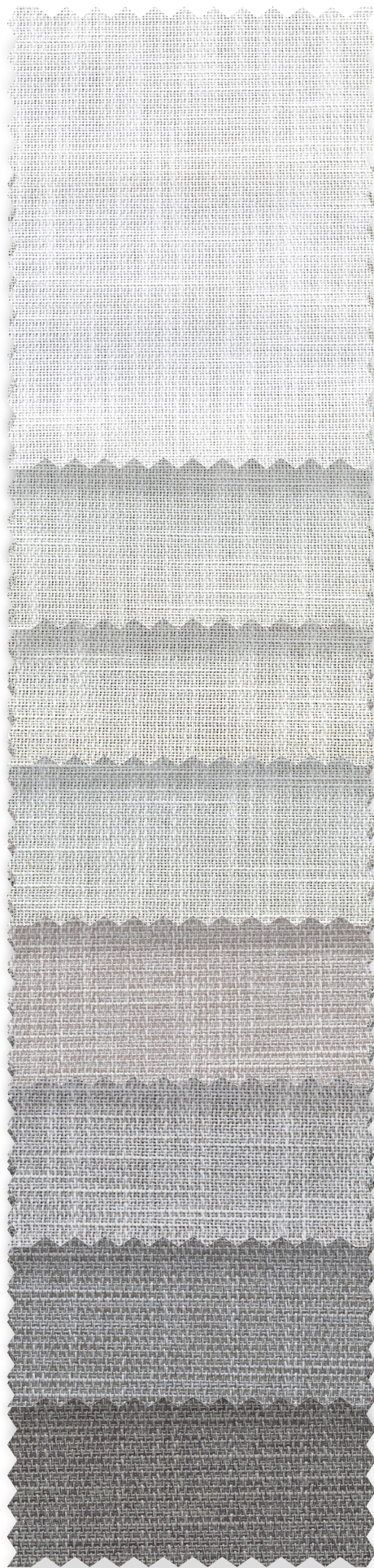
UB3
Dove

UB4
Vine

UB5
Fleece

UB6
Aspen

UB7
Fossil



STYLE
7850

UL0
Blanco

UL1
Almond

UL2
Raffia

UL3
Dove

UL4
Vine

UL5
Fleece

UL6
Aspen

UL7
Fossil

STYLE 7800/ 7850 SPECIFICATIONS

Emulating the timeless look of linen, Style 7800 achieves total light blockage with an acrylic foamed backing and decorative polyester face. With no backing, Style 7850 provides the same texture in complementing colors while allowing interiors to be illuminated with natural light.

These fabrics are suitable for roller shades, Roman shades and panel track systems.

FIRE CLASSIFICATION	NFPA 701 TM#1 (small scale)	
	<i>Fire classifications are subject to change. Please go to phifer.com for the most current information.</i>	
BACTERIA AND FUNGAL RESISTANCE	ASTM G21	ASTM E 2180
	ASTM G22	
ENVIRONMENTAL CERTIFICATION	GREENGUARD	GREENGUARD Gold
	Certified to these standards for low chemical emissions into indoor air during product usage	
SAFE USE	RoHS/Directive 2002/95/EC ANSI/WCMA A 100.1-2007 for lead content US Consumer Product Safety Commission Section 101	
WARRANTY	5-year interior	
UV PROTECTION	Seal of Approval by the Melanoma International Foundation (MIF) for effectiveness in preventing sun damage to the skin or eyes	
CLEANING INSTRUCTIONS	Fabric should be regularly dusted/vacuumed as appropriate. If commercial spot cleaners are used, they must first be tested and allowed to dry on an inconspicuous area to ensure compatibility.	

Railroading this fabric is not recommended. Colors may vary slightly from swatch samples. All variations are within industry standards.

STYLE	7800	7850
WIDTHS	118" 300 cm	118" 300 cm
ROLL LENGTH	22 Linear Yards 20 Linear Meters	22 Linear Yards 20 Linear Meters
COMPOSITION	100% Polyester with Acrylic Foamed Backing	100% Polyester with Acrylic Coating
MESH WEIGHT	12.9 oz/yd ² 437 g/m ²	7.4 oz/yd ² 250 g/m ²
FABRIC THICKNESS	0.026 in 0.66 mm	0.027 in 0.68 mm
OPENNESS FACTOR	Opaque	Light-filtering
ACOUSTICAL VALUE	NRC .05 / SAA .04	NRC .10 / SAA .10

PHIFER
INCORPORATED

P. O. Box 1700 • Tuscaloosa, Alabama 35403-1700 USA
Phone: 205.345.2120 • FAX: 205.391.0799
Toll Free USA/Canada: 1.800.221.5497
phifer.com • ISO Registered



© SheerWeave is a registered trademark of PHIFER INCORPORATED.
™ UL, the UL logos and the UL mark are trademarks of UL LLC.
Photo courtesy of Shaw Performance Fabrics, Australia.
© PHIFER INCORPORATED V21 110322 3041021