

Compact Auto-Tracking Total Station



- Auto-Tracking Technology
- Hybrid Positioning Ready
- Ultra-powerful Advanced EDM
- Exclusive LongLink™ Communications
- RC-5 Quick Lock
- Rugged Waterproof Design

DS Series Compact Auto-Tracking Total Station

Powerful EDM and tracking performance even in crowded traffic or harsh environments.

A professional motorized total station, the DS Series is a mid-ranged positioning product for the construction professional who is looking for productivity enhancement from servo motors and XPointing Technology. The MAGNET™ on-board software has an intuitive interface to assist with staking out complex structures. This rugged waterproof designed total station has the latest technology of TSshield™ advanced security and maintenance, and exclusive LongLink™ communications.

You can work directly on the bright, color touchscreen or with the alpha-numeric keyboard, to achieve higher levels of production with MAGNET™ Field on-board software. The DS Series total station can be used on a wide variety of applications, from building layout to earthwork volumes, and land surveying.

A World's First – New TSshield™

Topcon is proud to offer another World's First technology in all DS Series total stations – TSshield™. Every instrument is equipped with a telematics-based multi-function communications module providing the ultimate security and maintenance capabilities for your investment.

If your activated instrument is lost or stolen, you can send a coded signal to the instrument and disable it. This feature secures your total station anywhere in the world.

In the same module you have daily connectivity to cloud-based Topcon servers that can inform you of available software updates and firmware enhancements.



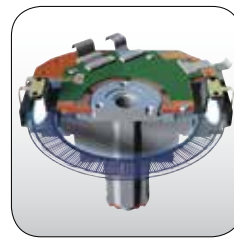
Ultra-Powerful Advanced EDM

The 1,000m (3,280 ft.) reflectorless measurement can be achieved with a smaller beam spot size. Measurements can be as fast as 0.9 seconds.



Hybrid Positioning™ Technology

Use both GNSS positioning and optical positioning data at the same time, in ways that improve field measurement efficiency. Hybrid Search provides a quick lock for the prism.



Advanced Angle Accuracy

Topcon's advanced angle encoder technology with exclusive calibration system provides "Best in Class" angle accuracy, up to 1-second (DS 201).



Rugged Waterproof Design

Provides protection from dust and driving rain as well as other inclement weather conditions. Operates in temperatures from -4°F to 122°F (-20°C to 50°C).



When connected with an external data collector the LongLink communication provides the power at the remote rod position. The remote operator can record the data for codes and rod heights for as-built eliminating most common errors. For stakeout, the remote operator can view directions required to find the stake point. The system becomes an economical robotic system where the instrument man simply needs to follow and aim on the remote prism. No need to focus on the prism, the DS with XPointing feature finds the center of the prism automatically. The LongLink communication is built in to the RC-5 has the ability to send a signal to the total station to quickly re-acquire the prism.



PRIMARY FEATURES



USB Upgrade Kit for Auto-Tracking

The DS Series firmware can be upgraded to automatically track a prism. This USB upgrade process is simple and will enhance productivity. The USB port can also be used to transfer data files.



KIT COMPONENTS

System Components

- DS Total Station
- Batteries and Charger
- Lens Cap and Hood
- Tool Kit
- Manual and USB Stick
- Carry Case with Straps



SPECIFICATIONS

Telescope

Resolving power	2.5"
Magnification	30x

Angle Measurement

	Min. Resolution/Accuracy
DS-201	1"
DS-203	3"
DS-205	5"

Tilt Angle Compensation

Compensation	Dual-axis compensator
Range	±6'

Distance Measurement

Prism EDM Range	6,000m
Prism EDM Accuracy	1.5mm+2ppm
Non-Prism Range	1,000m
Non-Prism Accuracy	2mm+2ppm (0.3 to 200m)
Measuring Time	Fine: 0.9 sec
	Rapid: 0.6 sec
	Tracking: 0.4 sec

Optional Auto-Tracking

360° Prism Range	2 to 600m (6.6 to 1,960 ft.)
Single Prism Range	1.3 to 1,000m (4.3 to 3,280 ft.)

Communications

LongLink™ rover communications*
 USB 2.0 Slot (Host + Slave)
 RS-232C Serial

General

Display	Color Touch TFT 240 x 320 QVGA Display (Dual Display)
Keyboard	25 keys with illuminator (Single Keyboard)
Battery Operation	Up to 5 hours
Dust/Water Protection	IP65
Wireless Connection	Bluetooth® Class 1
Operating Temperature	-4°F to 122°F (-20°C to 50°C)

Upgrade Options

Hybrid Positioning
 RC-5 LongLink/Quick lock

* The communication range may vary due to the condition of the area

For more specification information:
www.topconpositioning.com/ds-series

SOFTWARE

MAGNET™

A family of software solutions that streamlines the workflow for surveyors, contractors, engineers and mapping professionals.

Field

Modern User Interface

MAGNET Field provides a bright, graphical user interface with large touch icons, and bright readable text. The screens not only look good, but provide fast workflows.



Easy to Use

The icon and text field interface has been optimized to provide both text and images to indicate what data is needed on each screen.



Advanced Calculations

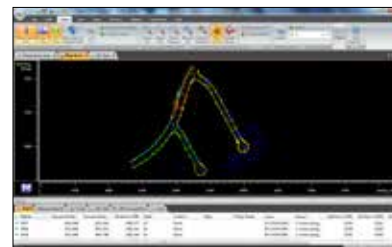
MAGNET Field on-board not only controls the measurements of the DS, but also provides many COGO and adjustment calculations right on the instrument.



Office Tools

MAGNET Office Tools

Directly integrates into Autodesk products utilizing their CAD engine, or as a standalone installation with Topcon's MAGNET Office Site and MAGNET Office Topo.



7400 National Drive • Livermore • CA 94550
 (925) 245-8300

Specifications subject to change without notice. ©2014 Topcon Corporation
 All rights reserved. P/N: 7010-2139 Rev. B TF 3/14

The Bluetooth® word mark and logos are registered trademarks owned by Bluetooth SIG, Inc. and any use of such marks by Topcon is under license. Other trademarks and trade names are those of their respective owners.

Your local Authorized Topcon dealer is: