

PROPRIETARY AND CONFIDENTIAL
 THE INFORMATION CONTAINED IN THIS DRAWING IS THE SOLE PROPERTY OF
 VECTOR ELECTRONICS & TECH., INC. ANY REPRODUCTION IN PART OR AS A WHOLE
 WITHOUT THE WRITTEN PERMISSION OF VECTOR ELECTRONICS & TECH., INC. IS
 PROHIBITED.

(TO MOUNT PCB ASSY
 TO PLUG-IN UNIT
 SUPPLIED LOOSE)

EUROCARD WITH DIN CONNECTOR
 SHOWN FOR REFERENCE ONLY
 NOT PART OF DELIVERABLE ITEM
 3U SIZE ACCEPT 100mm HIGH X 1.57mm THICK CARDS
 6U SIZE ACCEPT 233.35mm HIGH X 1.57mm THICK CARDS

(PERFORATED
 OR SOLID TYPE)

(SCREW, PAN HEAD, PHILLIPS,
 M2.5 X 12mm)
 PART OF ITEM 6

(SCREW, PAN HEAD, PHILLIPS,
 M2.5 X 6mm)
 PART OF ITEM 6

EUROCARD
 3U 100mm X 160mm
 SHOWN FOR REFERENCE ONLY

(PERFORATED
 OR SOLID TYPE)

TYPE 1

TYPE 5

ITEM NO	DESCRIPTION	QTY			
		3U - TYPE 1	3U- TYPE 5	6U - TYPE I	6U- TYPE V
1	FRONT PANEL, 2.54mm THICK ALUMINUM	1	1	1	1
2	HANDLE ALUMINUM EXTRUSION	1	1	2	2
3	SIDE PANEL ALUMINUM EXTRUSION	2	1	2	1
4	REAR PANEL, 2mm THICK ALUMINUM	1	-	2	-
5	COVER PANEL FLAT, 1.6mm THICK ALUMINUM	2	-	2	-
5	COVER HOUSING, 1mm THICK ALUMINUM	-	1	-	1
6	PCB HOLDER PAIR WITH ASSY SCREWS	1	1	1	1
7	NUTSTRIP, M2.5 TAPPED, TO MOUNT HANDLE	1	1	2	2
8	SLEEVE, CAPTIVE, BLACK	2, 4 OR 6	2, 4 OR 6	2, 4 OR 6	2, 4 OR 6
9	SCREW, CAPTIVE, PHILLIPS, M2.5 X 11mm	2, 4 OR 6	2, 4 OR 6	2, 4 OR 6	2, 4 OR 6
10	SCREW, FLAT HEAD, PHILLIPS, M3 X 8mm	8	4	16	8
11	SCREW, PAN HEAD, PHILLIPS, M3 X 8mm	-	2	-	4
12	SCREW, FLAT HEAD, PHILLIPS, M2.5 X 8mm	2, 3 OR 4	2, 3 OR 4	4, 6 OR 8	4, 6 OR 8
13	SCREW, FLAT HEAD, PHILLIPS, M2.5 X 4mm	4 OR 8	4	4 OR 8	4

1. FURNISHED ASSEMBLED

NOTES : UNLESS OTHERWISE SPECIFIED

UNLESS OTHERWISE SPECIFIED
 DIMENSIONS ARE IN INCHES
 TOLERANCES:
 DEC X.X ±0.1
 DEC X.XX ±0.03
 DEC X.XXX ±0.010
 FRACTIONS ±0.050
 ANGLES ±1°
 GD & T : ASME Y14.5-2009

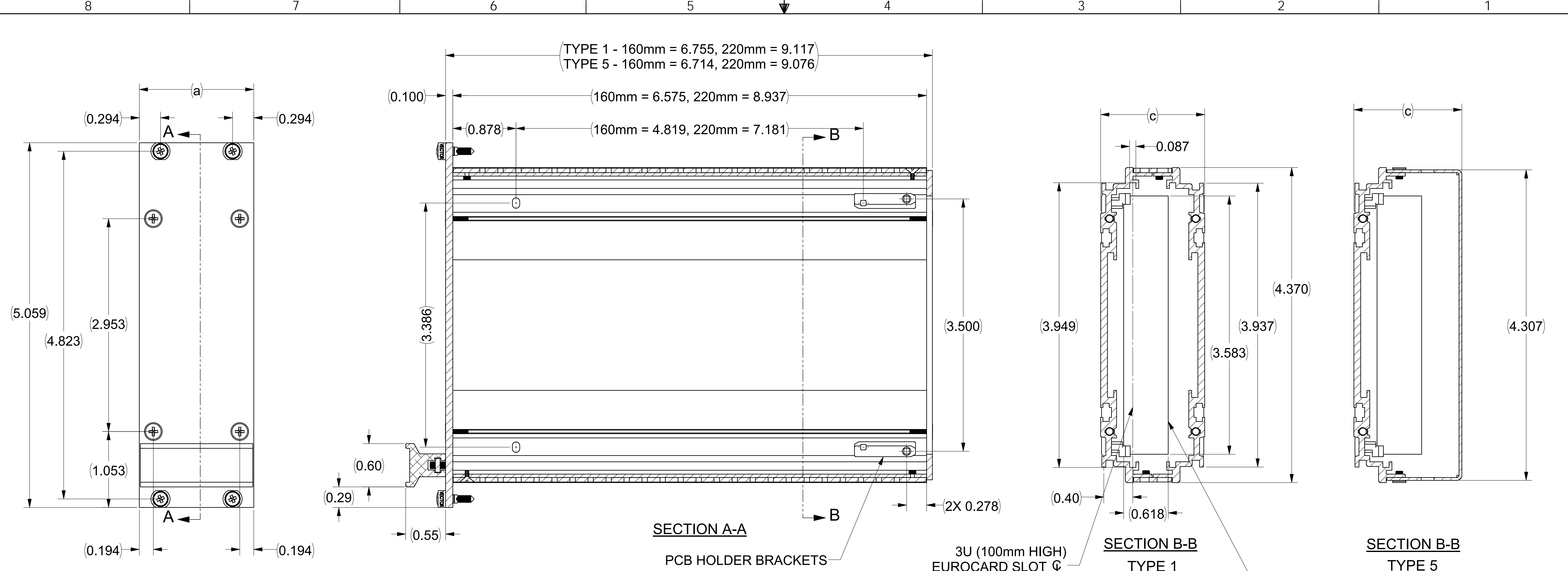
APPROVALS	NAME	DATE
DRAWN	TRUSHAR	03/08/23
CHECKED		
ENGINEER		
QA		

MATERIAL
 FINISH

THIRD ANGLE PROJECTION

VECTOR		11115 VANOWEN ST., NORTH HOLLYWOOD, CA 91605 ELECTRONICS & TECHNOLOGY, INC. www.vectorelect.com	
BOX TYPE PLUG-IN UNITS			
SIZE	DWG. NO.	REV	
D	EMBTX-XXX-nU-HPCR	A	
SCALE: 3:2	CAGE CODE: 82893	SHEET 1 OF 4	

REVISIONS				
ZONE	REV	DESCRIPTION	DATE	APPROVED
ALL	A	INITIAL RELEASE	03/08/23	



SECTION A-A
PCB HOLDER BRACKETS

SECTION B-B
TYPE 1

SECTION B-B
TYPE 5

3U (100mm HIGH) EUROCARD SLOT

3U PLUG-IN UNITS TYPE 1, TYPE 5

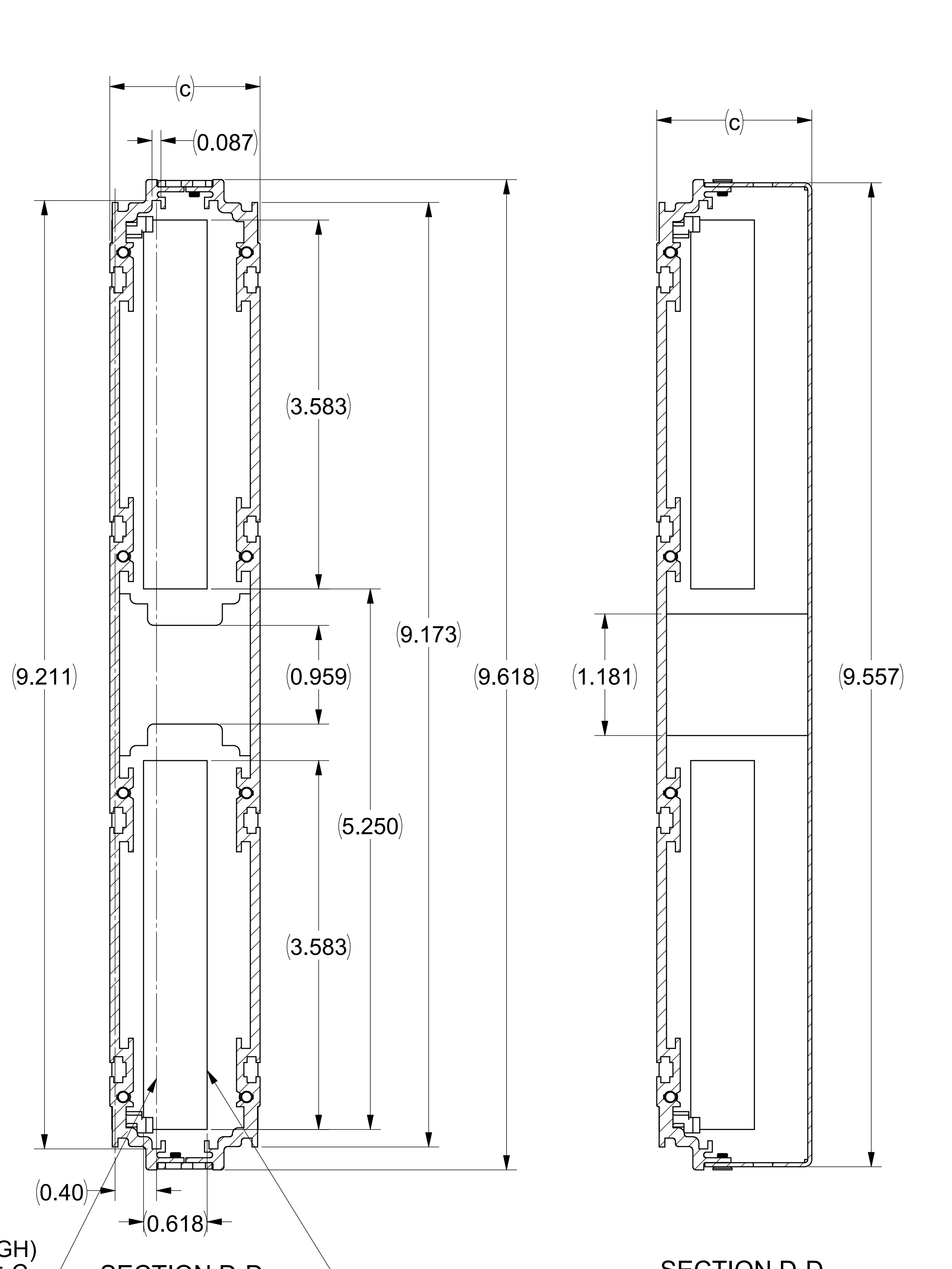
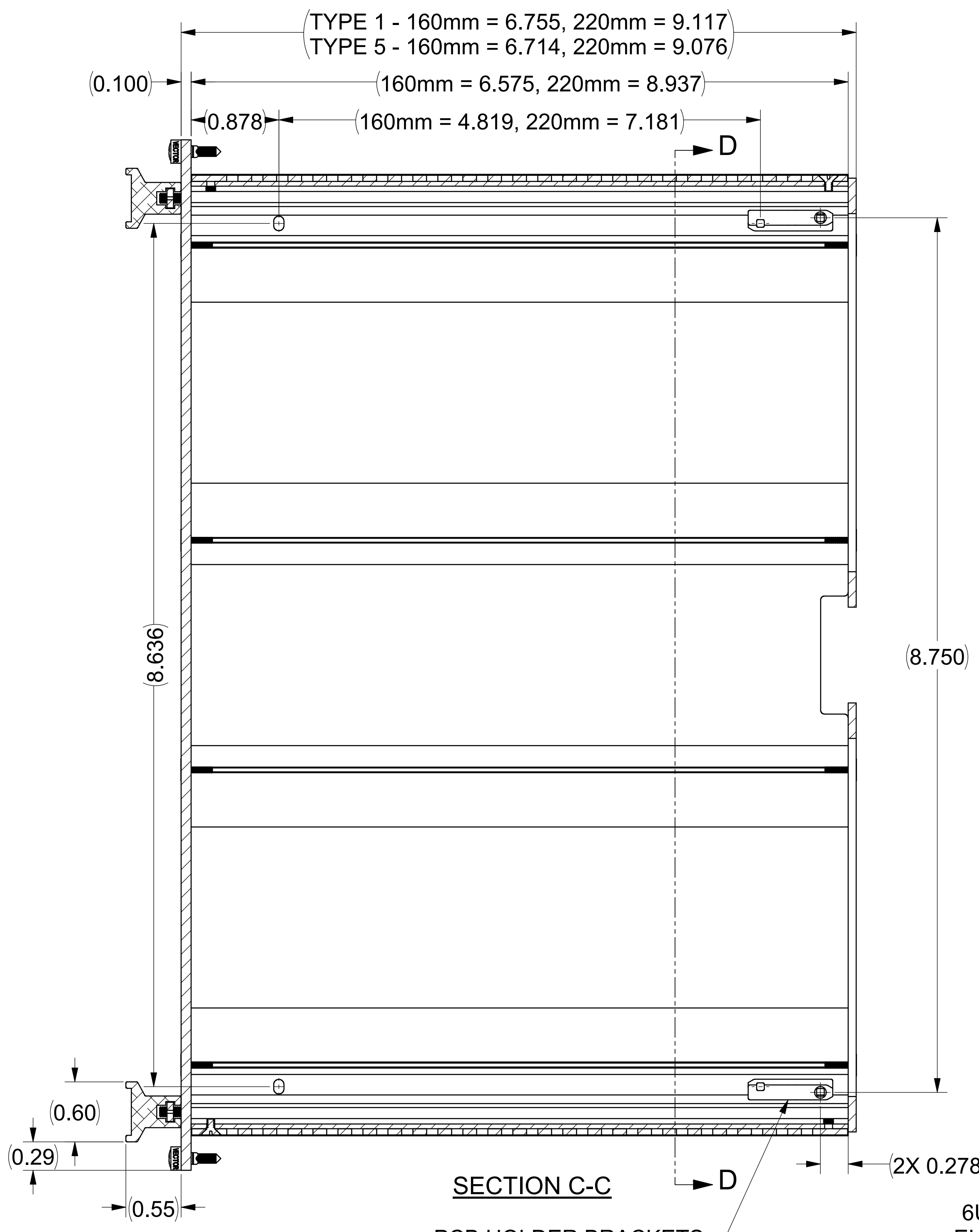
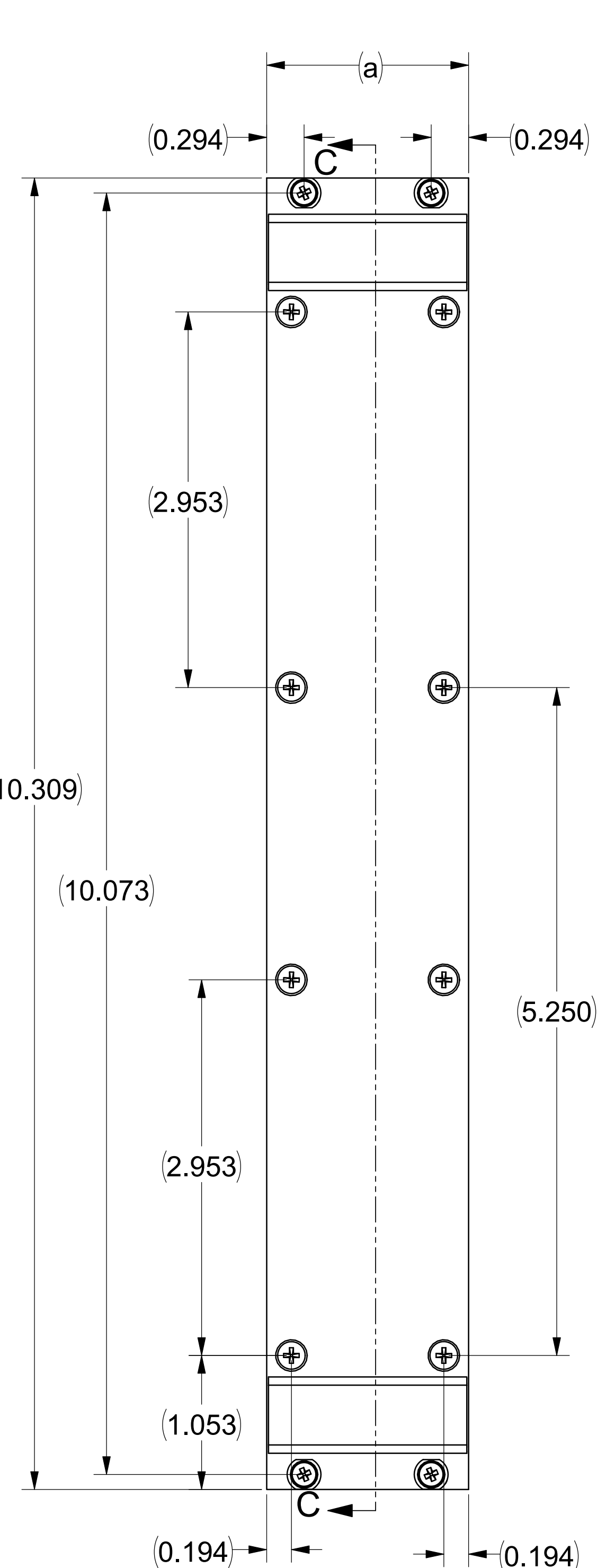
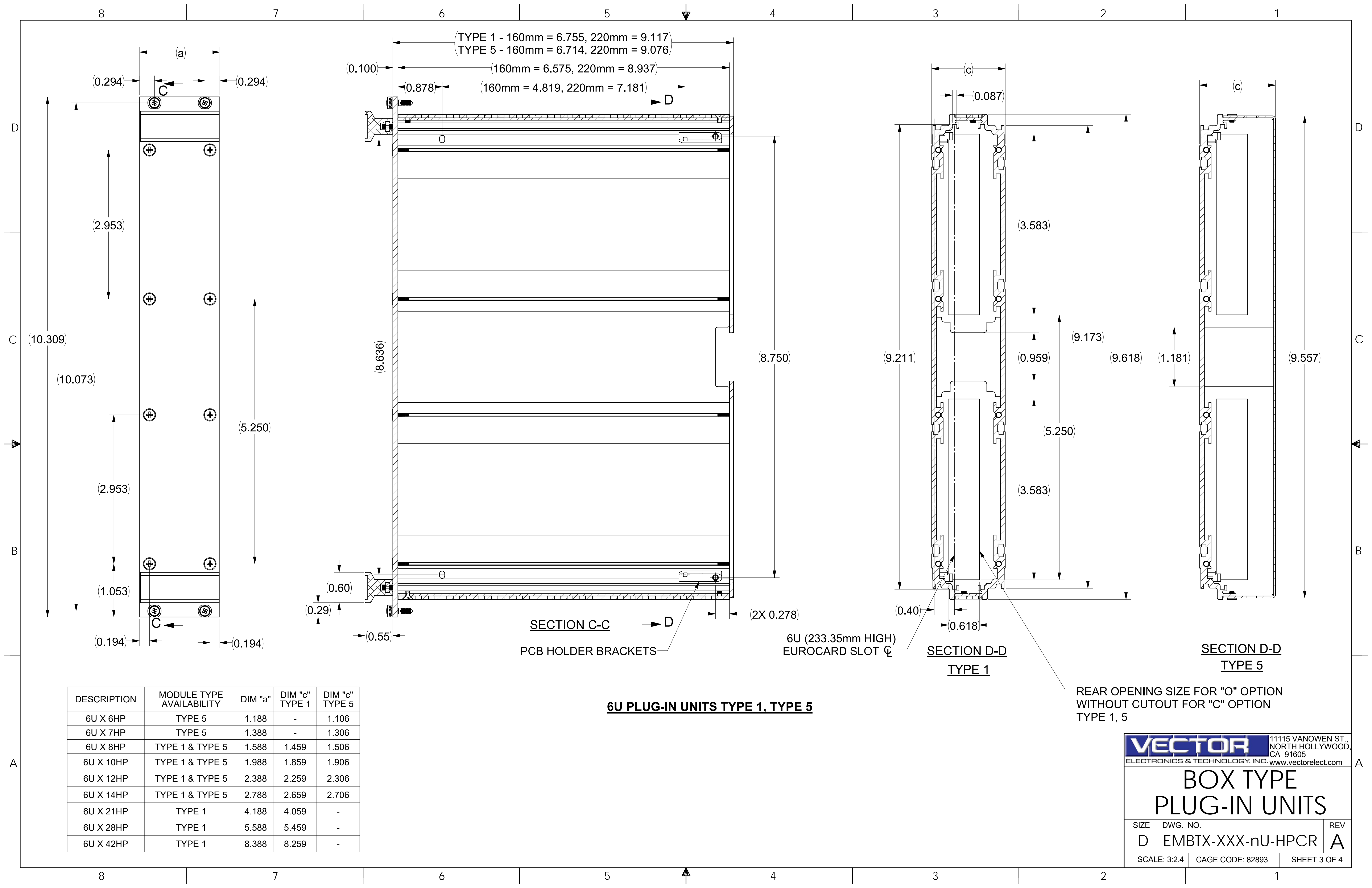
REAR OPENING SIZE FOR "O" OPTION WITHOUT CUTOUT FOR "C" OPTION TYPE 1, 5

DESCRIPTION	MODULE TYPE AVAILABILITY	DIM "a"	DIM "c" TYPE 1	DIM "c" TYPE 5
3U X 6HP	TYPE 5	1.188	-	1.098
3U X 7HP	TYPE 5	1.388	-	1.298
3U X 8HP	TYPE 1 & TYPE 5	1.588	1.443	1.498
3U X 10HP	TYPE 1 & TYPE 5	1.988	1.843	1.898
3U X 12HP	TYPE 1 & TYPE 5	2.388	2.243	2.298
3U X 14HP	TYPE 1 & TYPE 5	2.788	2.643	2.698
3U X 21HP	TYPE 1	4.188	4.043	-
3U X 28HP	TYPE 1	5.588	5.443	-
3U X 42HP	TYPE 1	8.388	8.243	-

VECTOR 11115 VANOWEN ST., NORTH HOLLYWOOD, CA 91605
 ELECTRONICS & TECHNOLOGY, INC. www.vectorelect.com

BOX TYPE PLUG-IN UNITS

SIZE	DWG. NO.	REV
D	EMBTX-XXX-nU-HPCR	A
SCALE: 3:2	CAGE CODE: 82893	SHEET 2 OF 4



6U PLUG-IN UNITS TYPE 1, TYPE 5

DESCRIPTION	MODULE TYPE AVAILABILITY	DIM "a"	DIM "c" TYPE 1	DIM "c" TYPE 5
6U X 6HP	TYPE 5	1.188	-	1.106
6U X 7HP	TYPE 5	1.388	-	1.306
6U X 8HP	TYPE 1 & TYPE 5	1.588	1.459	1.506
6U X 10HP	TYPE 1 & TYPE 5	1.988	1.859	1.906
6U X 12HP	TYPE 1 & TYPE 5	2.388	2.259	2.306
6U X 14HP	TYPE 1 & TYPE 5	2.788	2.659	2.706
6U X 21HP	TYPE 1	4.188	4.059	-
6U X 28HP	TYPE 1	5.588	5.459	-
6U X 42HP	TYPE 1	8.388	8.259	-

REAR OPENING SIZE FOR "O" OPTION WITHOUT CUTOUT FOR "C" OPTION TYPE 1, 5

VECTOR 11115 VANOWEN ST., NORTH HOLLYWOOD, CA 91605
ELECTRONICS & TECHNOLOGY, INC. www.vectorelect.com

BOX TYPE PLUG-IN UNITS

SIZE	DWG. NO.	REV
D	EMBTX-XXX-nU-HPCR	A
SCALE: 3:2.4	CAGE CODE: 82893	SHEET 3 OF 4

ASSEMBLY PART NUMBER CONFIGURATIONS

EMB XX - mmm - nU - HP C R

TYPE

T1 = TYPE 1
T5 = TYPE 5

EUROCARD DEPTH

160 = 6.299"
220 = 8.661"

EUROCARD HEIGHT

3U = 3.937"
6U = 9.187"

REAR OPENING

O = OPEN TYPE
C = CLOSED

TOP/BOTTOM COVER OPTION

P = PERFORATED
S = SOLID

MODULE WIDTH

06 = 6HP (1.2")
07 = 7HP (1.4")
08 = 8HP (1.6")
10 = 10HP (2.0")
12 = 12HP (2.4")
14 = 14HP (2.8")
21 = 21HP (4.2")
28 = 28HP (5.6")
42 = 42HP (8.4")

ASSY PART NUMBER EXAMPLES

EMBT1-160-3U-08SO IS FOR 3U X 160mm EUROCARD, 8HP WIDE, TYPE 1 MODULE WITH SOLID COVERS AND OPEN REAR
EMBT5-160-6U-07PC IS FOR 6U X 160mm EUROCARD, 7HP WIDE, TYPE 5 MODULE WITH PERFORATED COVERS AND CLOSED REAR

NOTES :

TYPE 1 - 6HP, 7HP WIDTHS ARE NOT AVAILABLE
TYPE 1 - 8HP WIDTH PERFORATED COVER OPTION NOT AVAILABLE
TYPE 5 - LARGER THAN 14HP WIDTHS ARE NOT AVAILABLE

VECTOR 11115 VANOWEN ST.,
NORTH HOLLYWOOD,
CA 91605
ELECTRONICS & TECHNOLOGY, INC. www.vectorelect.com

**BOX TYPE
PLUG-IN UNITS**

SIZE	DWG. NO.	REV
D	EMBTX-XXX-nU-HPCR	A
SCALE: 3:2.4	CAGE CODE: 82893	SHEET 4 OF 4