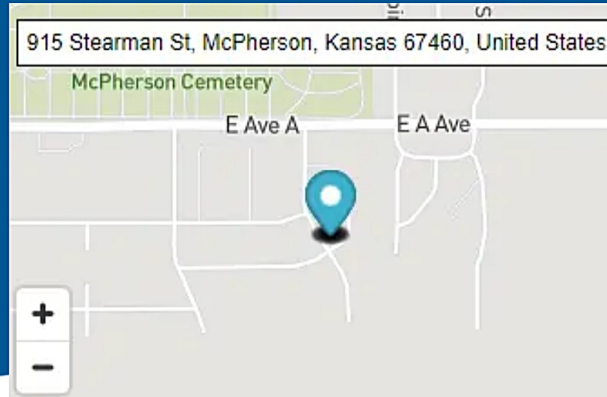


COMMUNITY FEATURES

- Affordable ... Income limits apply
- 2 and 3 bedroom townhomes
- Community clubhouse
- Easy access to I-135
- On-line payment portal
- Non-smoking community
- Pet friendly community



Prairie Pointe Residences



A quality community
designed just for you!

Please Call to Schedule a Showing

Hours

Tuesday 8:30am to 4:30pm
Wednesday 8:30am to 4:30pm
Thursday 8:30am to 4:30pm
Sunday 9:00am to 1:00pm

915 Stearman Street
McPherson, KS 67460

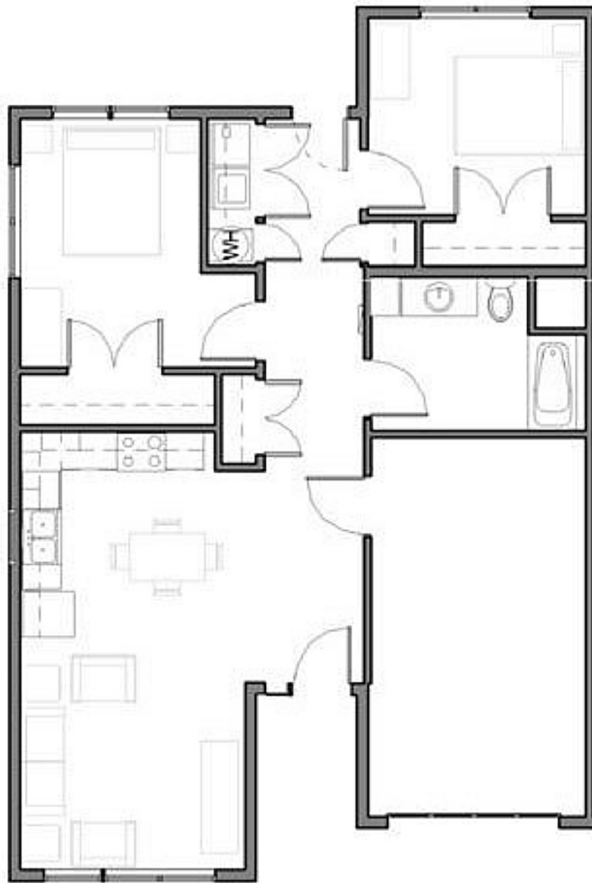
620.504.6065



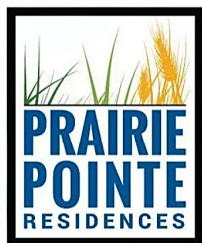
see more at www.beacon.cc



2 Bedrooms
1 Bathroom



Single Story



Prairie Pointe Residences

FEATURES

- Attached garage with opener
- Custom fit window blinds.
- Fully equipped kitchens with room for dining
- Individual furnace, central air and hot water
- Off-street parking
- Private entry with garage
- Private patio
- Refrigerator, range, dishwasher, microwave, and disposal
- Washer and dryer connections
- Large closets for ample storage
- Wheelchair and disability accessible
- Safe, clean all electric (resident pays electric and water)
- Individual trash bins



915 Stearman Street
McPherson, KS 67460

620-504-6065



see more at www.beacon.cc

3 Bedrooms
1.5 Bathroom



1st Floor

2nd Floor

