

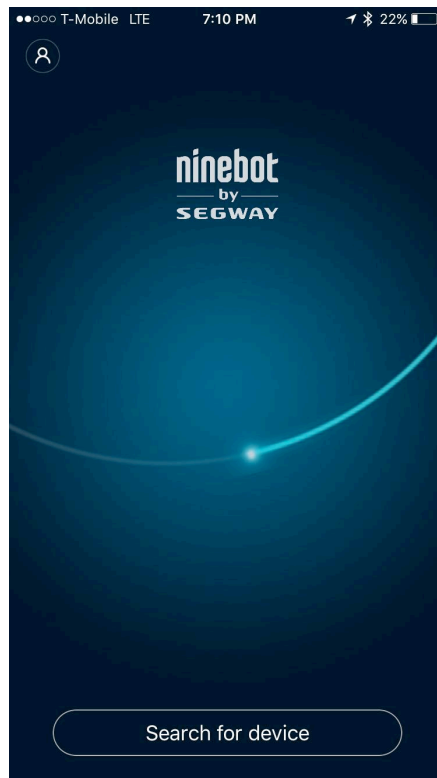
Ninebot by Segway Recalibration Procedure

Re-calibration is a simple procedure and this function is built into the Ninebot application.

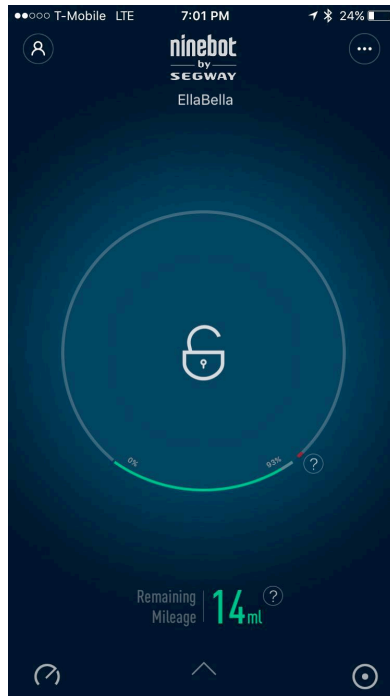
Below are step-by-step instructions for recalibrating your MiniPro.

Switch on the MiniPro and Put it on the parking stand.

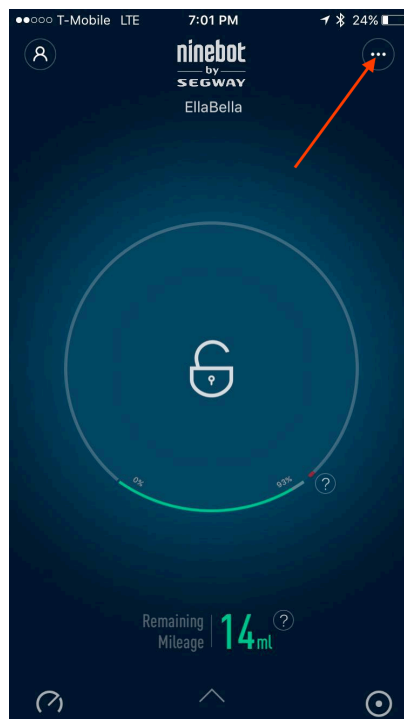
1. Open the 9Bot App and pair it with the MiniPro



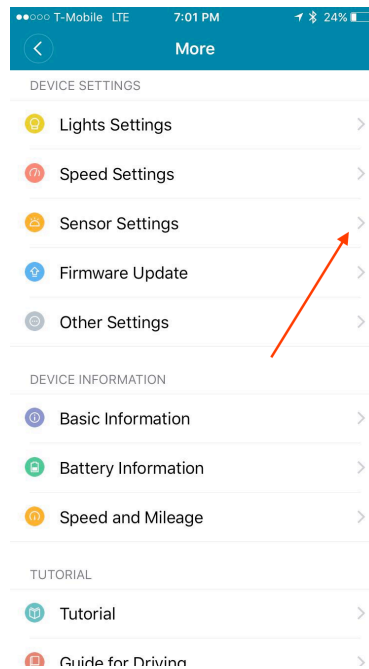
2. After your MiniPro is paired the App automatically will switch to the second screen.



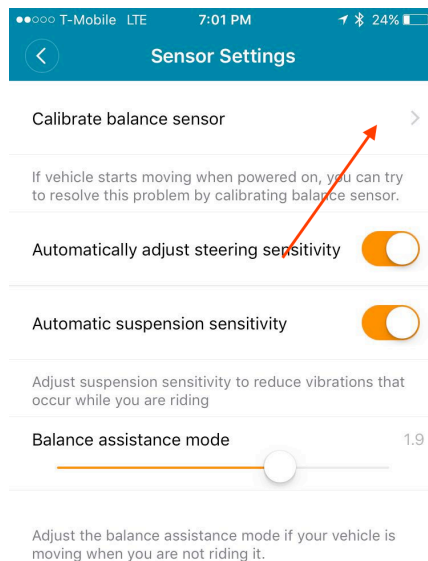
3. Select Options:



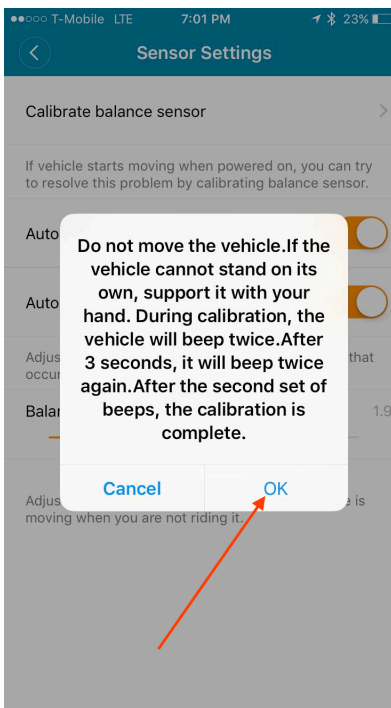
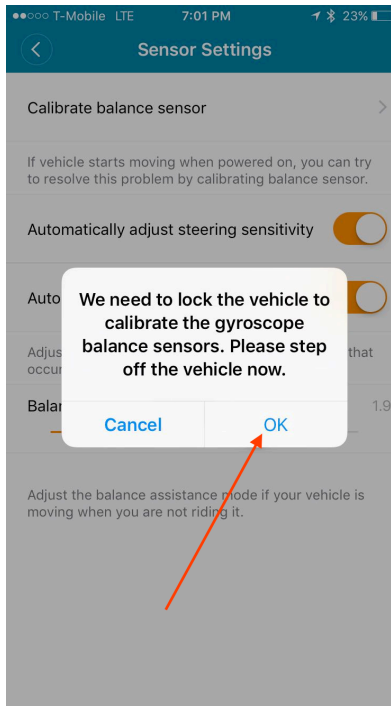
4. Select “Sensor Setting”



5. Select “Calibrate balance sensor”



6. The MiniPro will self-calibrate



Wait until the MiniPro finishes self-calibration.

You are done.