

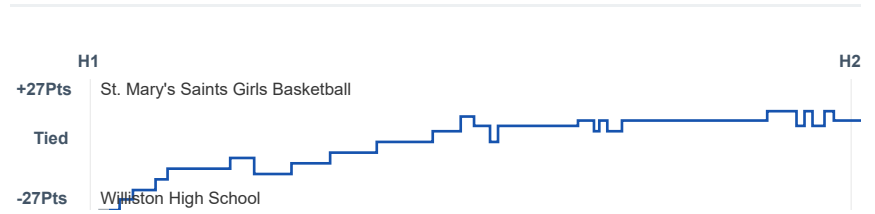
Box Score Report

SMCHS vs Williston - Dec 28, 2019 - W 65-38

Period Stats

Team	1	2	Final
SMCHS	39	26	65
WHS	20	18	38

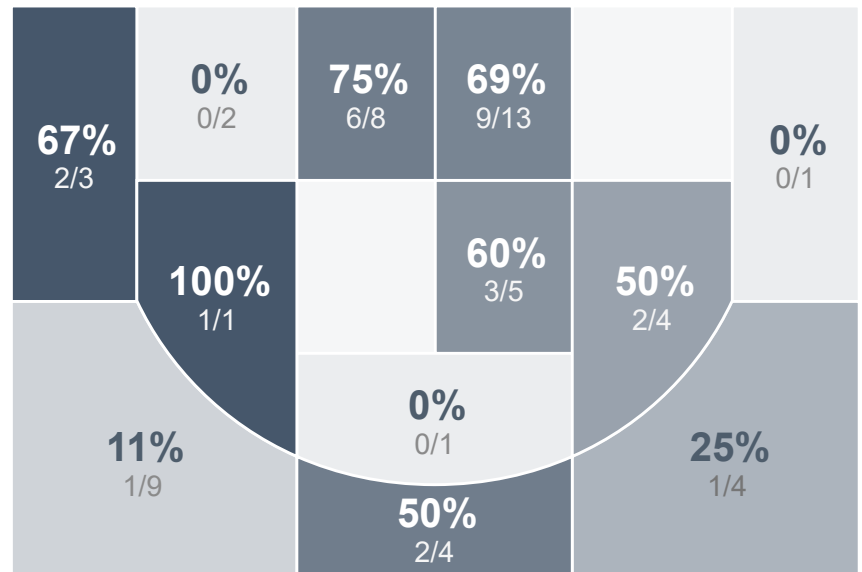
Run Graph



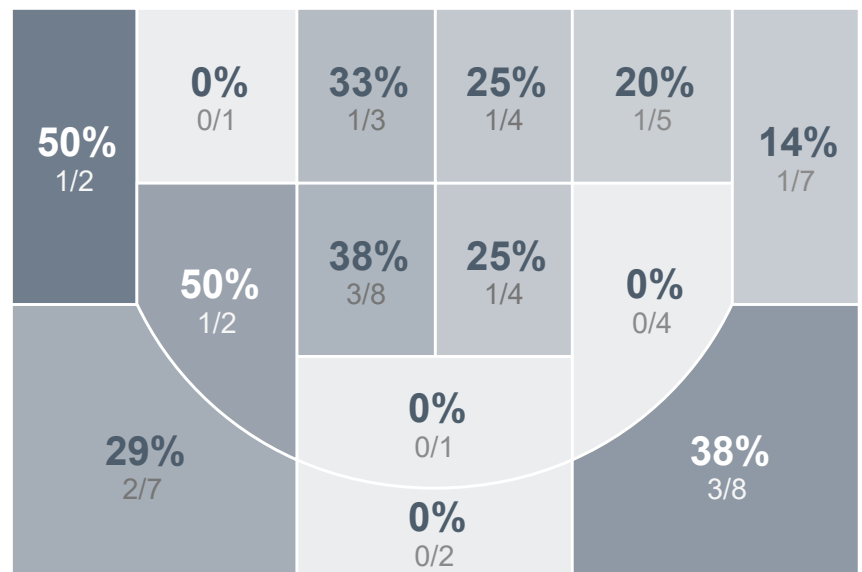
Team Stats

	SMCHS	WHS
Field Goal %	49.1%	25.9%
Effective Field Goal %	54.5%	31.9%
2FG Made/Attempted	21/34	8/32
2FG%	61.8%	25.0%
3FG Made/Attempted	6/21	7/26
3FG%	28.6%	26.9%
FT Made/Attempted	5/8	1/3
Free Throw Percentage	62.5%	33.3%
Points Per Possession	1.11	0.66
Transition Points	8	2
Points Off Turnovers	14	10
Second Chance Points	12	6
Points in the Paint	36	12
Offensive Rebounds	10	14
Defense Rebounds	27	18
Assists	18	8
Deflections	4	13
Steals	6	6
Blocks	2	1
Turnovers	10	12
Personal Fouls	11	10
Charges Taken	0	0

St. Mary's Saints Girls Basketball



Williston High School



St. Mary's Saints Girls Basketball's Player Stats

Name	Pts	FG	3FG	FT	+/-	MINS	OREB	DREB	AST	DEFL	STL	BLK	TO	FOUL	CHG
#0 Madison Zander	0	0/1	0/1	0/0	+ 1	3	0	0	0	0	0	0	0	0	0
#1 Abbi Kopp	4	1/4	0/2	2/2	+ 10	22	0	2	2	0	0	0	1	2	0
#2 Lydia Spies	0	0/1	0/1	0/0	+ 2	6	0	0	0	0	0	0	1	1	0
#3 Maddy Miller	5	2/7	1/6	0/0	+ 27	23	1	2	2	1	0	0	2	1	0
#4 Grace Vetter	4	2/3	0/0	0/0	+ 6	18	0	2	4	0	0	0	0	0	0
#22 Elizabeth Peyerl	10	4/10	2/4	0/0	+ 22	25	1	5	5	2	1	0	2	2	0
#23 Maddie Grad	10	4/9	2/6	0/0	+ 12	17	1	0	1	0	1	0	0	3	0
#25 Mykie Messer	3	1/1	1/1	0/0	+ 13	18	0	1	0	0	0	0	0	0	0
#30 Hallie Schweitzer	13	6/9	0/0	1/2	+ 28	28	5	6	1	0	3	1	2	0	0
#33 Maria Mann	16	7/10	0/0	2/4	+ 14	27	2	7	3	1	1	1	2	2	0

Williston High School's Player Stats

Name	Pts	FG	3FG	FT	+/-	MINS	OREB	DREB	AST	DEFL	STL	BLK	TO	FOUL	CHG
#3 Shelby Meyer	0	0/2	0/1	0/1	- 13	9	0	0	1	1	0	0	1	0	0
#10 Emily Jaeger	4	1/7	1/2	1/2	- 7	28	1	2	1	2	0	0	0	3	0
#12 Bridget Carvey	13	5/14	3/7	0/0	- 20	31	5	5	1	4	0	0	3	2	0
#13 Erin Powers	0	0/1	0/0	0/0	- 11	13	2	1	0	0	1	1	0	0	0
#22 Brooklyn Douglas	12	5/16	2/8	0/0	- 27	36	1	5	2	1	1	0	3	1	0
#30 Chesni Strand	4	2/5	0/0	0/0	- 16	24	3	1	2	1	1	0	0	1	0
#33 Makia Remus	3	1/11	1/8	0/0	- 29	35	1	1	1	3	3	0	2	3	0
#40 Keeley Snellings	2	1/2	0/0	0/0	- 12	10	0	1	0	1	0	0	3	0	0