

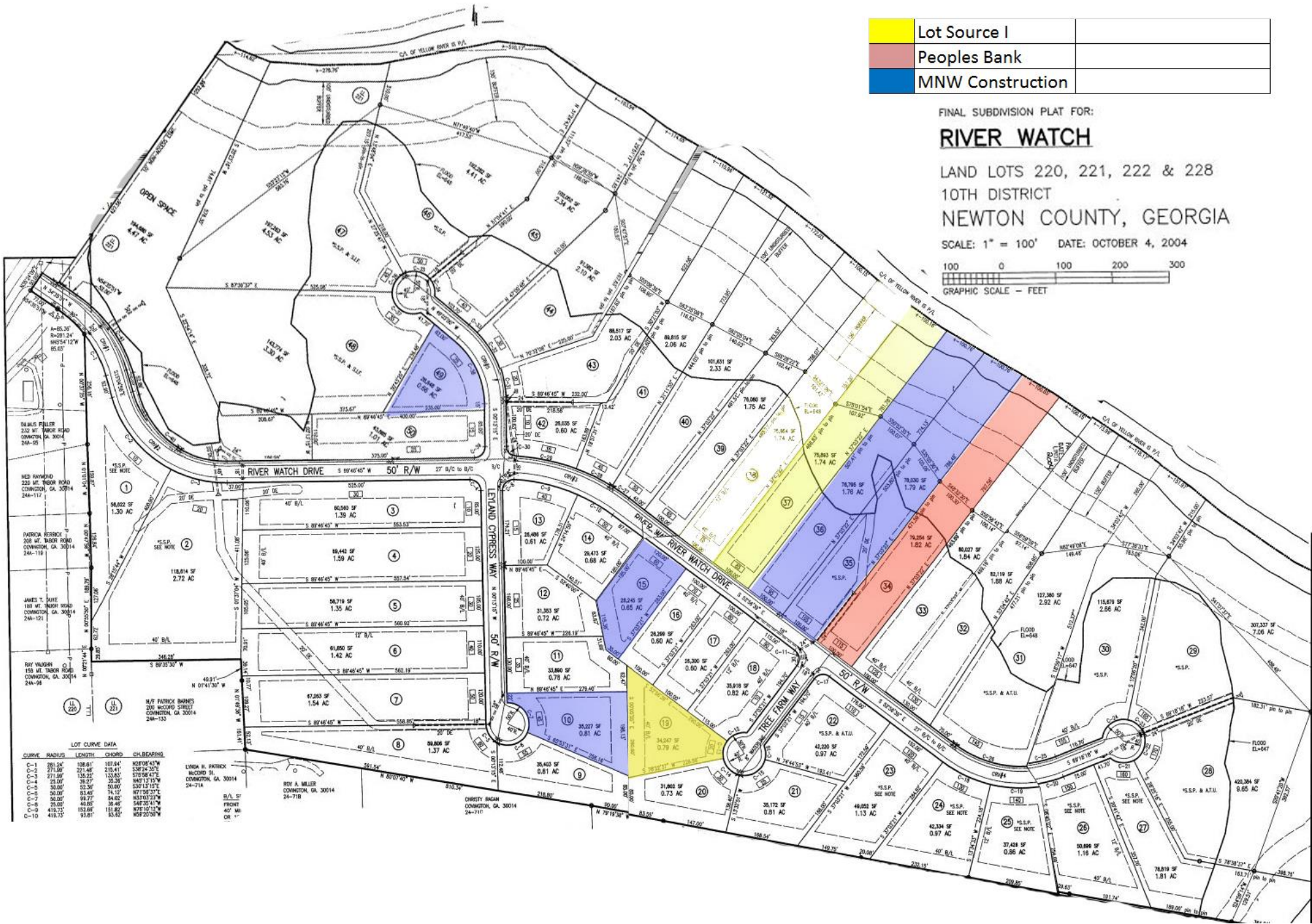
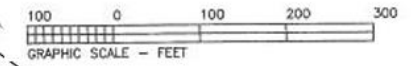
	Lot Source I	
	Peoples Bank	
	MNW Construction	

FINAL SUBMISSION PLAT FOR:

RIVER WATCH

LAND LOTS 220, 221, 222 & 228
10TH DISTRICT
NEWTON COUNTY, GEORGIA

SCALE: 1" = 100' DATE: OCTOBER 4, 2004



LOT CURVE DATA

CURVE	RADIUS	LENGTH	CHORD	CH BEARING
C-1	281.24'	128.81'	107.84'	N02°09'45"W
C-2	271.80'	121.84'	114.41'	S70°24'30"E
C-3	271.80'	126.22'	113.82'	S70°58'47"E
C-4	231.80'	98.21'	84.07' S15°15'15"W	
C-5	50.00'	50.00'	50.00'	S30°13'15"E
C-6	50.00'	50.00'	50.00'	N17°10'15"W
C-7	50.00'	99.27'	84.02'	N33°10'33"W
C-8	45.00'	45.00'	45.00'	S45°30'34"W
C-9	418.32'	192.89'	151.82'	N76°10'12"W
C-10	418.32'	93.81'	83.82'	N59°20'50"W

LYNDA H. PATRICK
CONDOMINIUM, GA. 30014
24-714

ROY A. MILLER
CONDOMINIUM, GA. 30014
24-718

CHRISTY BINGHAM
CONDOMINIUM, GA. 30014
24-711

B/L SF
FRONT
40' W/O
OR 1'