

Rabbit Anti-Mesothelin [EP140]:RM0127

Intended Use: For Research Use Only

Description: The mesothelin gene encodes a 69-kDa precursor protein that is processed to a 40-kDa glycosylphosphatidylinositol (GPI)-anchored protein, the mature mesothelin, present on the cell surface. Its biological function is not known, but recent studies have shown that it forms a strong and specific complex with MUC16; a binding which has been suggested to be the basis of ovarian cancer metastasis. Mesothelin is present on normal mesothelial cells lining the pleura, peritoneum, and pericardium. In tumors, overexpression of Mesothelin has been observed in mesotheliomas, and other tumors including ovarian, pancreatic carcinomas, and cholangiocarcinoma. By using immunotoxin targeting immunotherapy, mesothelin has also been reported as a new therapeutic target in various types of cancers, such as human cholangiocarcinoma.

Specifications

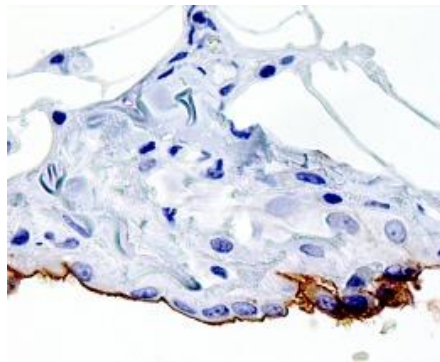
Clone: EP140
 Source: Rabbit
 Isotype: IgG
 Reactivity: Human
 Localization: Membrane, cytoplasm
 Formulation: Purified antibody in 0.2% BSA and 15mM sodium azide (NaN₃)
 Storage: Store at 2°- 8°C. For longer periods of storage, store at -20°C. Avoid repeat freeze-thaw cycles
 Applications: IHC
 Package:

Description	Catalog No.	Size
Mesothelin Concentrated	RM0127	1 ml

IHC Procedure*

Positive Control Tissue: Mesothelioma
 Concentrated Dilution: 50-200
 Pretreatment: Citrate pH6.0, 15 minutes using Pressure Cooker, or 30-60 minutes using water bath at 95°-99°C
 Incubation Time and Temp: 30-60 minutes @ RT
 Detection: Refer to the detection system manual

* Result should be confirmed by an established diagnostic procedure.



FFPE human omentum stained with anti-Mesothelin using DAB