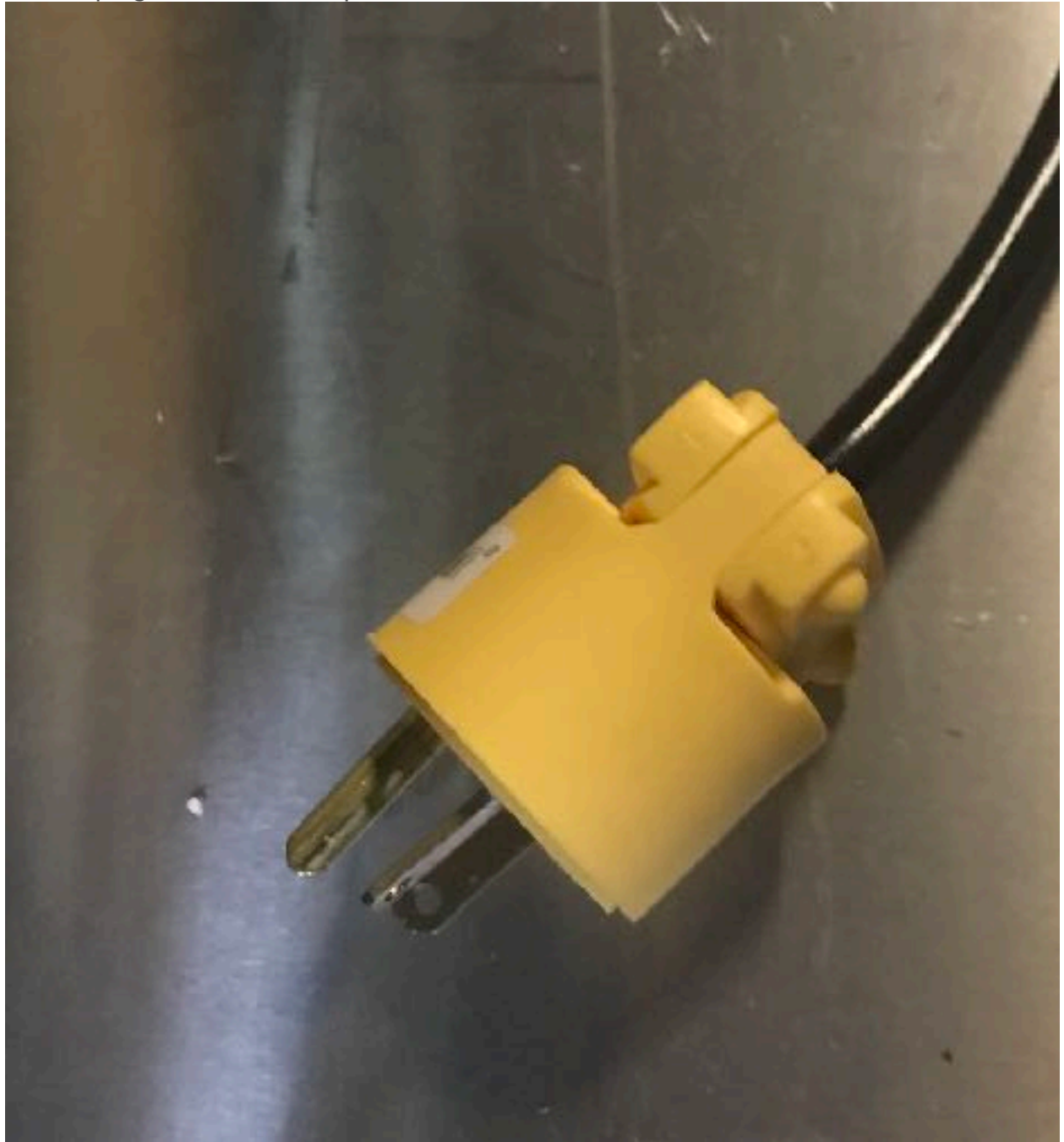


REPLACE IGNITOR IN ORO ROASTERS:

REPLACE IGNITOR IN ORO ROASTERS:

First unplug roaster from all power source:



## REPLACE IGNITOR IN ORO ROASTERS:

Remove cover panel from electric room;



## REPLACE IGNITOR IN ORO ROASTERS:

Set panel on top of protected part of roaster:



## REPLACE IGNITOR IN ORO ROASTERS:

You will see ignitor in back top of electric room:



## REPLACE IGNITOR IN ORO ROASTERS:

Next you will see two bolts holding ignitor to roaster. We suggest you take several cell phone pictures of wiring before removing anything. Next remove 2 bolts and gently remove ignitor box:

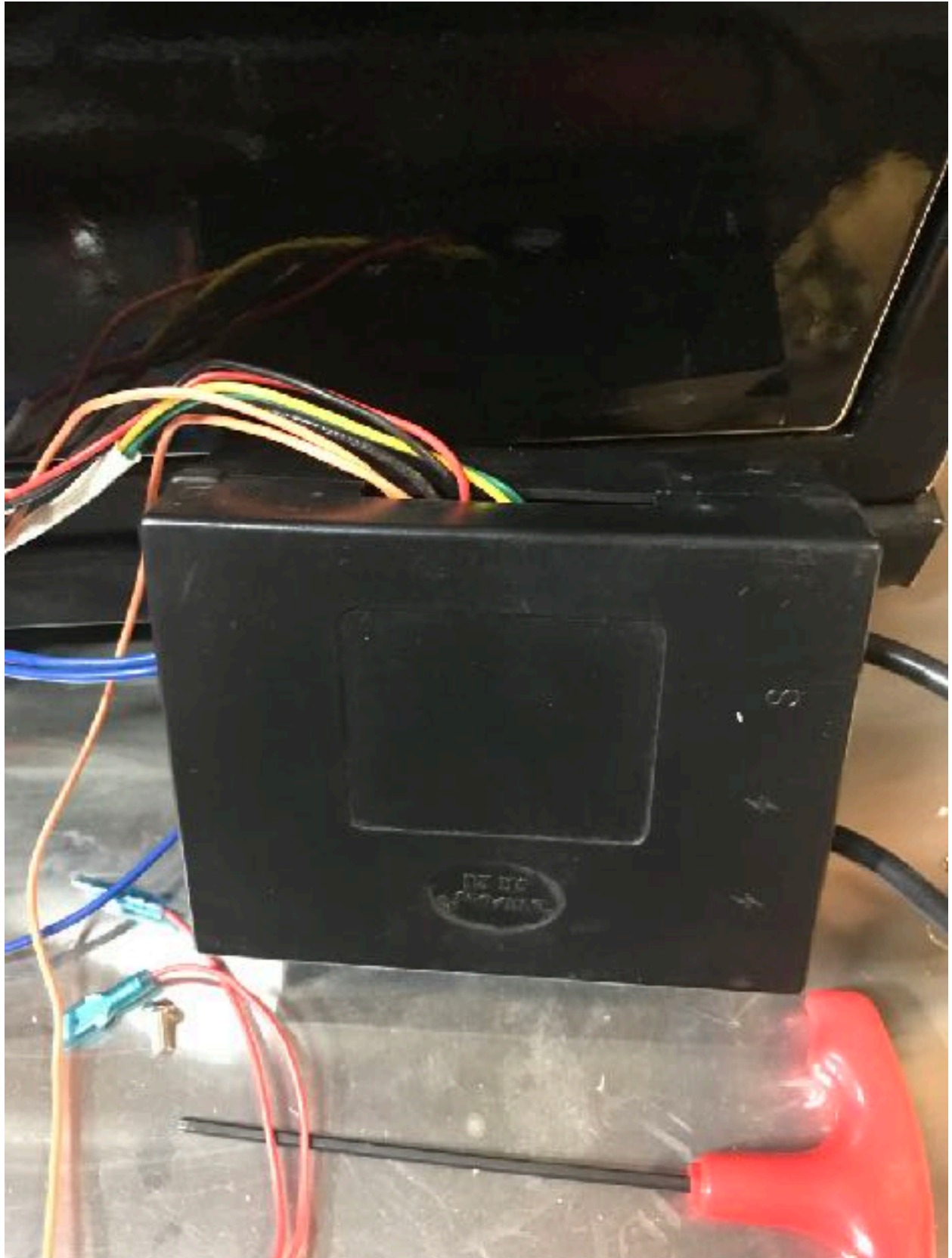


## REPLACE IGNITOR IN ORO ROASTERS:



There are two ways to install new ignitor. What we have found to be easiest is to cut wiring close to defective ignitor and then remove bad ignitor and bolt in new ignitor and replace each wire one-by-one so as not to mistakenly put any wire in wrong location.

REPLACE IGNITOR IN ORO ROASTERS:



## REPLACE IGNITOR IN ORO ROASTERS:

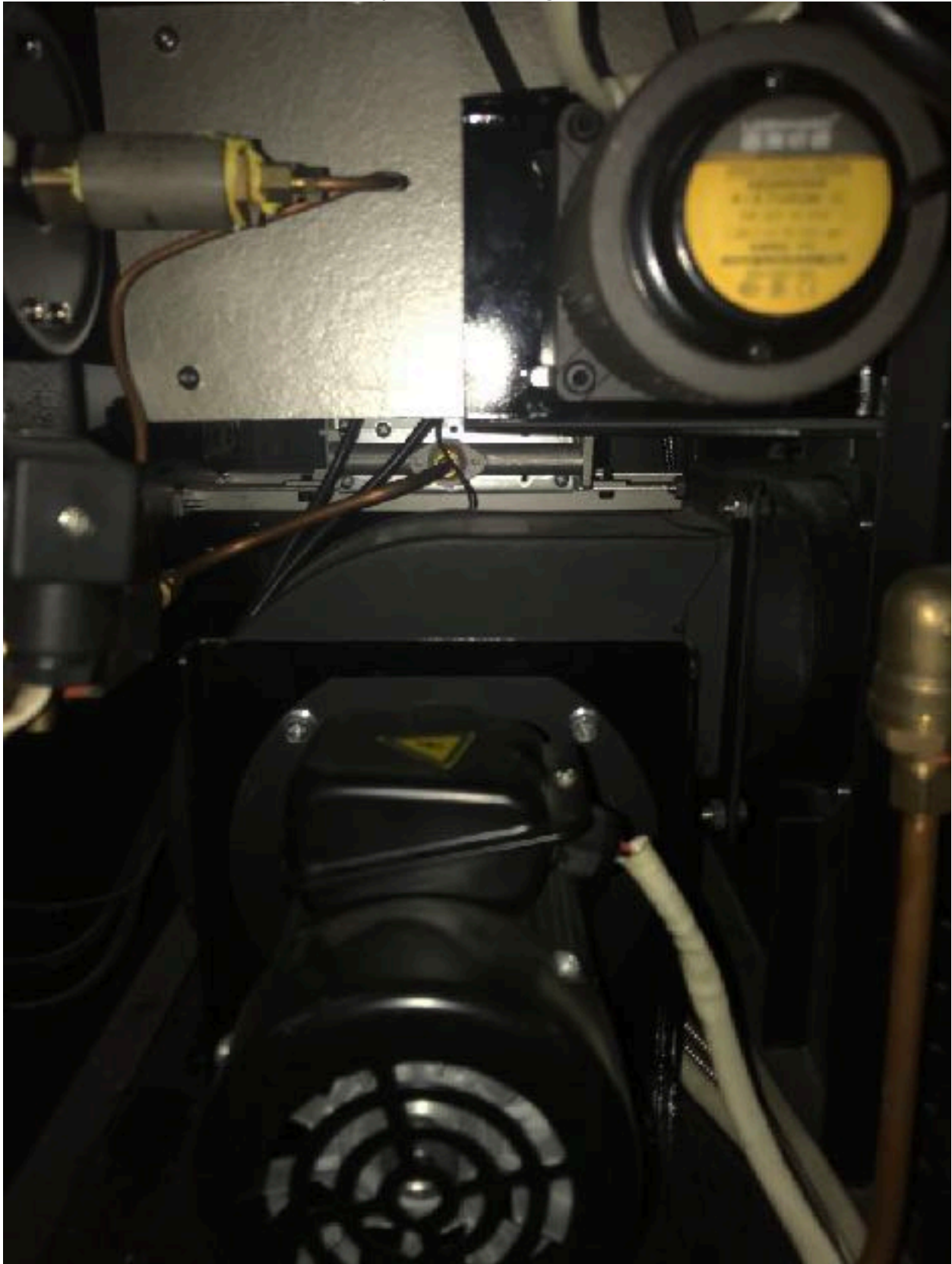


Then the next toughest part of repair is replacing the two BLACK ignitor needle wires. If you can reach and replace the two black ignitor needle wires without having to remove the firewall between drum motor and burners this will save much time.



## REPLACE IGNITOR IN ORO ROASTERS:

As can be seen below: There is very little room to get hands and a tool behind firewall.



## REPLACE IGNITOR IN ORO ROASTERS:

But if you must remove the silver firewall panel then you likely will need to first remove the drum motor:



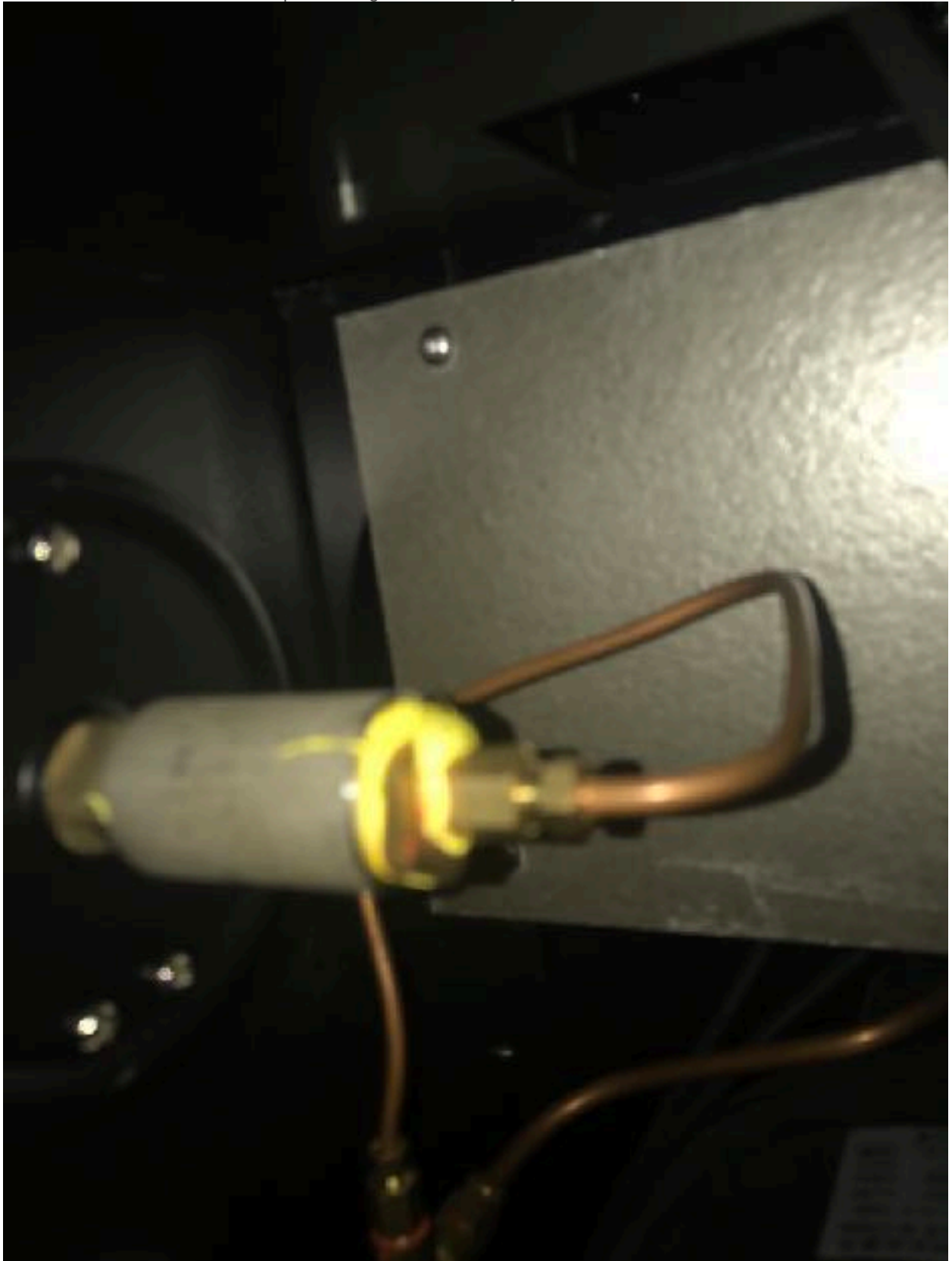
## REPLACE IGNITOR IN ORO ROASTERS:

The way to do this is loosen and remove the 4 bolts on outside of roaster backside:



## REPLACE IGNITOR IN ORO ROASTERS:

Then motor can be set down on top of cooling blower fan and you can reach the 4 bolts to remove firewall:



## REPLACE IGNITOR IN ORO ROASTERS:

Once you remove firewall you should be able to reach and remove the black ignitor needle wires and replace.

Then reverse procedure and put firewall back on and drum motor (there is a pdf and perhaps a video on removing motor on the tech page)

Once motor is on and all wires are properly secured you may test unit.