



Models to Improve Treatment of Opioid Use Disorders *The Jefferson Story*


Roshni S. Patel, PharmD, BCPS
Assistant Professor of Pharmacy Practice
Jefferson College of Pharmacy
Roshni.patel@Jefferson.edu

Who We Are!



Jefferson (Philadelphia University + Thomas Jefferson University)

- Center City & East Falls campuses
 - Sidney Kimmel Medical College
 - College of Architecture and the Built Environment
 - College of Health Professions
 - College of Life Sciences
 - College of Nursing
 - College of Pharmacy
 - College of Population Health
 - College of Rehabilitation Sciences
 - College of Humanities and Sciences
 - Institute of Emerging Health Professions
 - Kanbar College of Design, Engineering, and Commerce
 - School of Continuing and Professional Studies

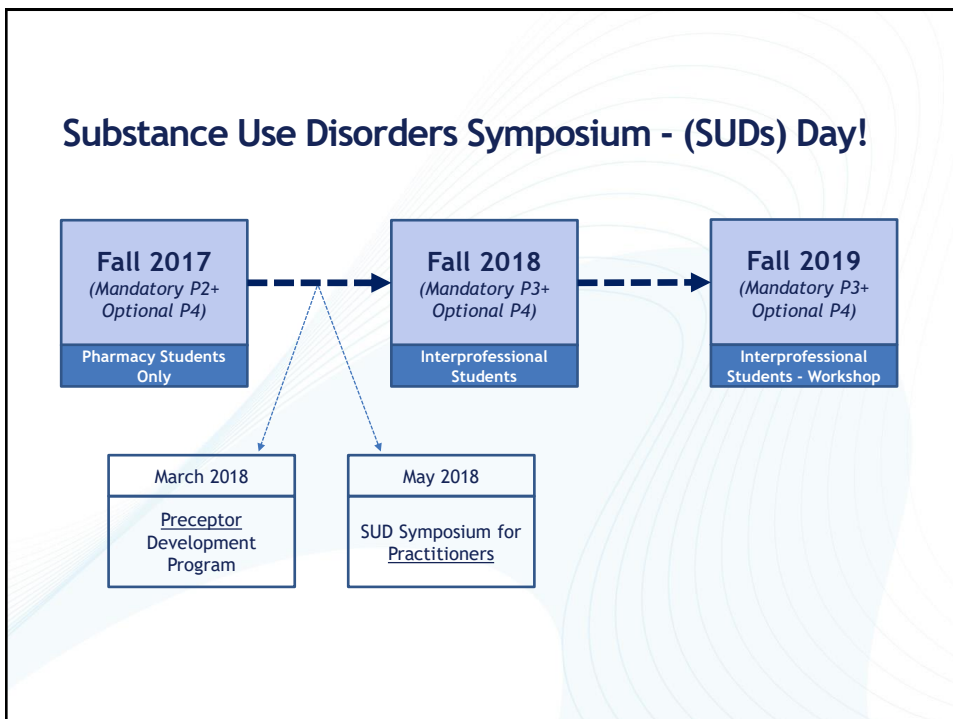


JCP Curriculum 3-year SAMHSA Interprofessional Grant

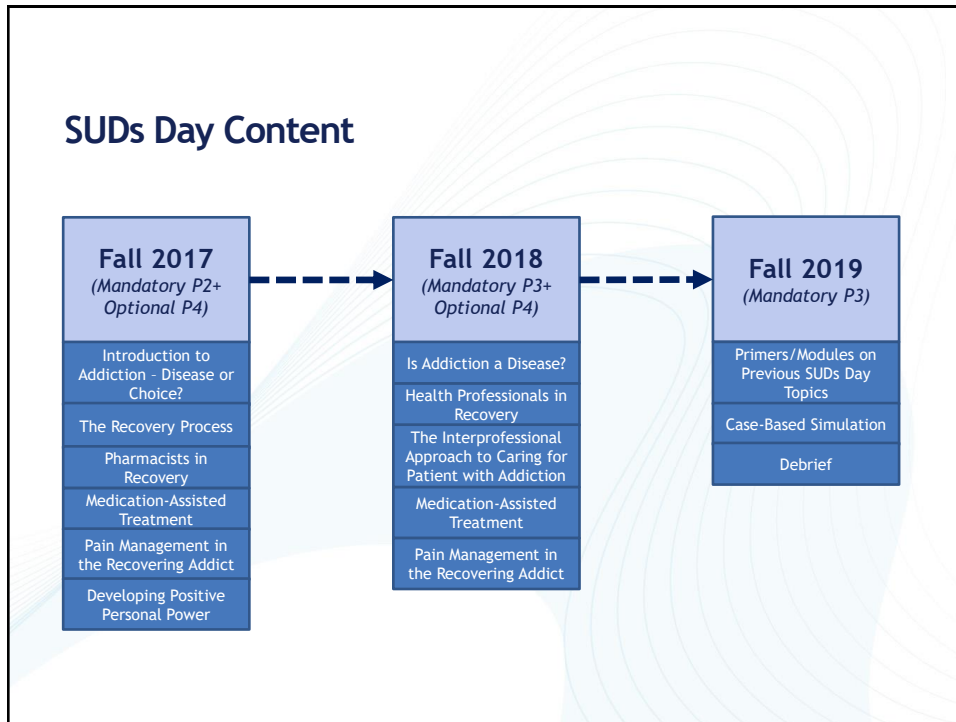
Health Mentors Program

- M1: Life & Wellness Questionnaire
- M2: Home Visit
- M3: Advocacy
- M4: IPE Activity

- **P1: Introduction to SUD/SBIRT**
 - Pathophysiology of substance use disorders
 - SBIRT, motivational interviewing
 - Group assignments, role-playing in lab, guest speakers, standardized patients
 - SARP (Secundum Artem Reaching Pharmacists with Help), reflections, and ethical discussions
- **P2: Reinforce/Apply SBIRT**
 - Role-playing in lab
 - Screening in Introductory Pharmacy Practice Experiences (i.e. rotations)
 - Advocating for institution and administrative changes
- **P3: Management of Addiction**
 - Therapeutic principles and treatment strategies (for both addiction and pain) and pharmacology
 - Pharmacy law
 - Substance Use Disorders Symposium
- **P4: Applying ALL THE ABOVE**
 - On Advanced Pharmacy Practice Experiences (i.e. rotations)



SUDs Day Content



The Co-Curricular “Stuff”



- Professional/student organizations
 - American Pharmacists Association Academy of Student Pharmacist (APhA-ASP)
 - Generation RX
 - *The mission of Generation Rx is to educate people of all ages about the potential dangers of misusing prescription medications. In doing so, we strive to enhance medication safety among our youth, college students, other adults in our communities, and seniors. Prescription medications can help us live longer and healthier lives, but any medication has the potential to do harm - especially when misused.*
 - Collaboration with other colleges of pharmacy and the Philadelphia Department of Health
 - Pennsylvania Pharmacists Association
 - APhA Institute on Alcoholism & Drug Dependencies
 - Interprofessional Student Hotspotting Learning Collaborative

Jefferson Opioid Taskforce

- Originated from the 18 strategic recommendations put forth by the Philadelphia Mayor Jim Kenney's Task Force to Combat the Opioid Epidemic in Philadelphia
- 4 subcommittees:
 - ✓ Policy
 - ✓ Education
 - ✓ Treatment
 - ✓ Philanthropy
- Electronic platform (*myJeffHub*) to prevent siloed efforts