

SVI
INDUSTRIAL

Plant support engineered
to meet all of your
project goals since 1993.

- Mechanical Services
- Gas Path Solutions
- Industrial Masonry
- On-Site Services



Our company



SVI INDUSTRIAL

Company Overview

- Headquarters and Shop in Pineville North Carolina with regional locations
- Strong safety culture and record
- Women owned business
- Long history of supporting plant outage work
- Southeast Valve, Inc (SVI) doing business as SVI INDUSTRIAL & SVI DYNAMICS
- Diverse business to support turnkey plant work
 - ✓ Mechanical – valves, welding, fabrication and machining
 - ✓ Industrial Masonry – brick, tile and corrosion control systems
 - ✓ Engineered Gas Path Solutions – inlet/exhaust systems, SCR emissions control systems, noise control





Mechanical Services



SVI INDUSTRIAL

Mechanical Services

- Code capabilities (ASME and NBIC certifications)
 - VR – repair and testing of pressure relief valves (field or shops)
 - ASME U, R and PP – Fabrication and Repair of pressure vessels and piping



- Seven (7) mobile shops for on-site outage support
 - Equipment to support Machining, Welding and Fabrication
 - Outfitted with lathe, drill press, sand blast/cleaning and over-head crane
 - Portable steam boiler for on-site valve testing





Valve Repair



SVI INDUSTRIAL

Mechanical Services – Valve Repair

- Repair for all valve types and brands
 - Cost effective compared to replacement with faster lead-time
 - Flanged valves can be repaired in shop with free inspection
 - Welded in-line valves repaired in place for nominal open and inspect rate
 - Custom replacement parts fabricated to OEM specifications
- Repair for Manual, Safety (Section I and VIII) and Control Valves including:
 - Flange facing/Hardfacing
 - In-line seat replacements
 - Pressure seal gaskets
 - Crack repairs





Welding & Fabrication



SVI INDUSTRIAL

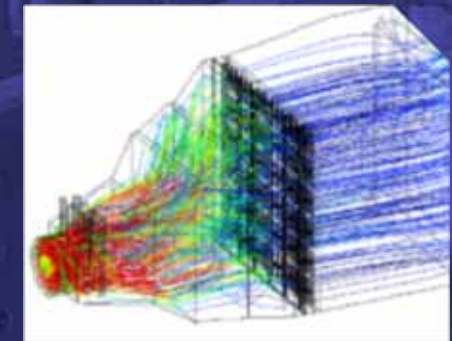
Mechanical Services

- Turnkey mechanical solutions for plant outage support including:
 - Piping including jacketed piping and heat tracing
 - Repair and modifications of code heat exchangers and vessels
 - Flange facing
 - Welding for specialty metals including P91
 - HRSG/boiler tube, headers and drums





Gas Path Solutions



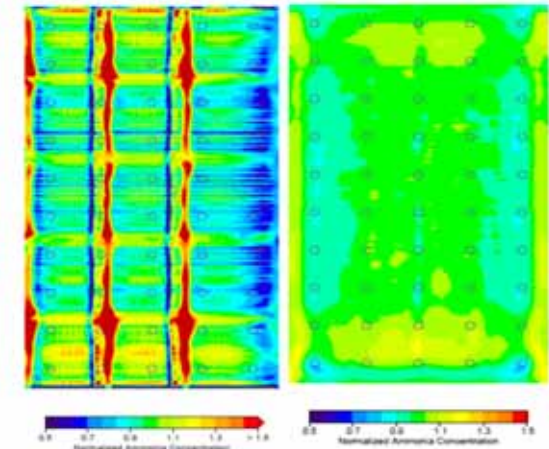
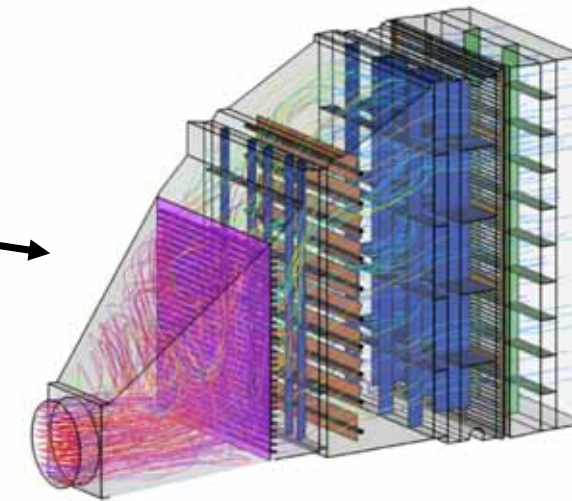
SVI DYNAMICS - Engineered Gas Path Solutions

- Applications and Products
 - **Simple Cycle/CT exhaust systems**
 - ✓ Stack, silencer, elbow, EJ, diffusers, plenums, ladders, platforms
 - ✓ Inlet silencers and systems
 - **SCR emissions control systems**
 - **Combined Cycle/HRSG noise control**
 - ✓ Stack silencers, vent silencers, acoustical shrouds, boiler house
 - **Acoustical Panel Systems**
 - ✓ Partial barriers, full enclosures, power house buildings
 - **Industrial Fan systems**
 - ✓ Absorptive and Tuned Dissipative fan silencer systems
 - **Compressor station noise control**



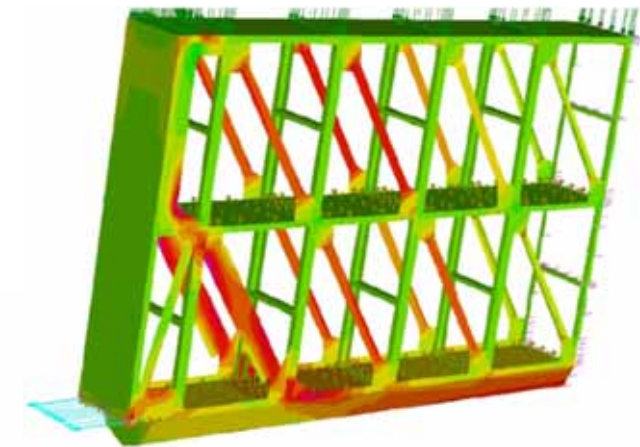
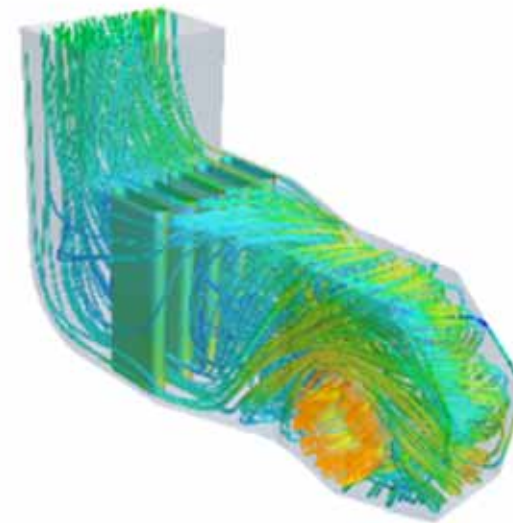
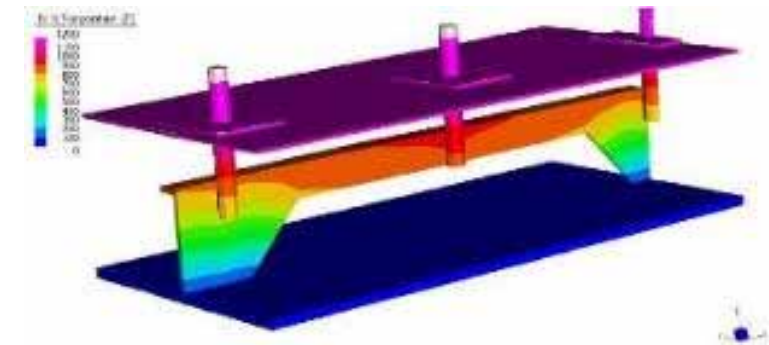
SVI DYNAMICS - SCR Emission Control Systems

- Applications and Products
 - **Simple Cycle/Combined Cycle SCR systems**
 - ✓ Complete design and supply to meet stack emission requirements
 - **Ammonia Systems**
 - ✓ Storage, forwarding and vaporization equipment
 - ✓ Ammonia Injection Grid (AIG) – inhouse fabrication at SVI shop
 - **CO/SCR Catalysts**
 - ✓ Fully integrated into SVI system
 - **CFD Modeling**
 - ✓ Every system modeled including detailed simulation of gas flow, ammonia and temperature distribution at catalysts
 - **New or Retrofit Systems**
 - **Turnkey Solutions**



SVI DYNAMICS – Engineering Support

- Engineering Support
 - **Acoustic Engineering**
 - Noise modeling, surveys and prediction
 - **Mechanical Engineering**
 - Finite Element Analysis (FEA), Thermal Analysis
 - **Structural Engineering**
 - Load assessment (STAAD)
 - **Aerodynamic Engineering**
 - CFD and Physical Modeling
 - **Turnkey site and performance guarantees**



TURNKEY GAS PLANT SUPPORT

SVI synergies for OEM and Aftermarket gas plant support:

- Inlet/Exhaust gas path systems
- Design and supply of SCR emissions control systems
- Noise control guarantees
- OEM warranty & aftermarket outage support
- Inspections/root cause analysis

Inlet Systems:

- Silencers
- Filter House Systems

Gas Turbine Enclosures

Steam Vent Silencers

Stack/Duct Silencers:

- Absorptive/Splitters
- Hybrid/Reactive
- Bar style

SCR emissions systems



Pressure Part Support:

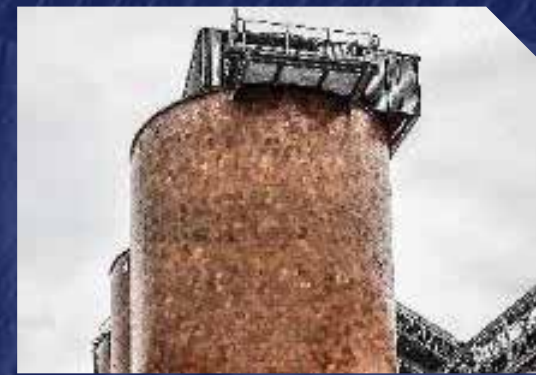
- Tanks/Vessels
- Piping
- Tube Bundles / Harps
- Heat Exchangers
- Drums
- Valve repair
 - PRVs
 - Control

Balance of plant noise control:

- Noise modeling and surveys
- Gas path/ductwork acoustic designs
- Acoustical panel systems and enclosures
- Near and Far Field noise guarantees
- Cooling tower noise control



Industrial Masonry



SVI INDUSTRIAL

Industrial Masonry - Brick and Tile

- High performance corrosion control for industrial applications
- Turnkey project solutions for single source support
- Containment and lining applications include:
 - Towers, Washers, Columns, Tile Chests, U-Drains, Sumps
 - Process tanks and chests



Contact Information

Larry Ballard - CEO
 (704) 688-9800
 ballard@svi-industrial.com

Lisa Ballard - COO
 (704) 614-9751
 lsballard@svi-industrial.com

Omar Lahbabi - President
 (704) 614-9748
 lahbab@svi-industrial.com

Valve Service
 Ben Medlock
 (704) 644-5165
 medlock@svi-industrial.com

Welding & Fabrication
 Brian Walsh
 (704) 644-5160
 walsh@svi-industrial.com

Custom Machining
 Ben Medlock
 (704) 644-5165
 medlock@svi-industrial.com

Industrial Masonry
 Kory Cooper
 (980) 406-4784
 cooper@svi-industrial.com

**Gas Path Solutions /
 Noise Control**
 Scott Schreeg
 (219) 380-9267
 sschreeg@svidynamics.com



Additional Key Contacts:

Jimmy Allman – Masonry Account Manager | Cell: 704-614-0891 | Email: allman@svi-industrial.com

Andy Dodgen – SVI INDUSTRIAL Account Manager VA, MD, DE, PA | Cell: 804-763-1671 | Email: dodgen@svi-industrial.com

Jeff Gardner – SVI INDUSTRIAL Account Manager NC, SC, Eastern GA | Cell: 704-533-3227 | Email: gardner@svi-industrial.com

Kevin Kelly – SVI INDUSTRIAL Account Manager AL, KY, MS, TN, Western GA | Cell: 704-614-9752 | Email: kkelly@svi-industrial.com

Bill Gretta – SVI DYNAMICS Director of SCR Product Line | Cell: 908-303-4123 | Email: bgretta@svidynamics.com





Questions?



Address

Corporate Headquarters
12261 Nations Ford Road
Pineville, NC 28134

Contact

Phone : 704-688-9800
www.svi-industrial.com

Satellite Locations

Narrows, VA	LaPorte, IN
Cartersville, GA	Palatka, FL
Atkinson, NC	Mt. Vernon, IN

EXCEEDING EXPECTATIONS

Every customer, Every time